



HP Pavilion dv6000 Wireless Card Replacement

Replace the wireless card in your HP Pavilion dv6000.

Written By: Ben Hirsch



INTRODUCTION

Replace the wireless card in your HP Pavilion dv6000.



TOOLS:

- [Phillips #00 Screwdriver](#) (1)



PARTS:

- [Replacement RAM for HP Pavilion dv6000](#) (1)

Step 1 — Wireless Card



- ⓘ Lay the laptop on a flat surface, battery side up.
- Remove the two screws securing the RAM shield to the lower case.
- ☑ The screws will remain captive within the shield.
- Lift and remove the RAM shield up from the lower case.

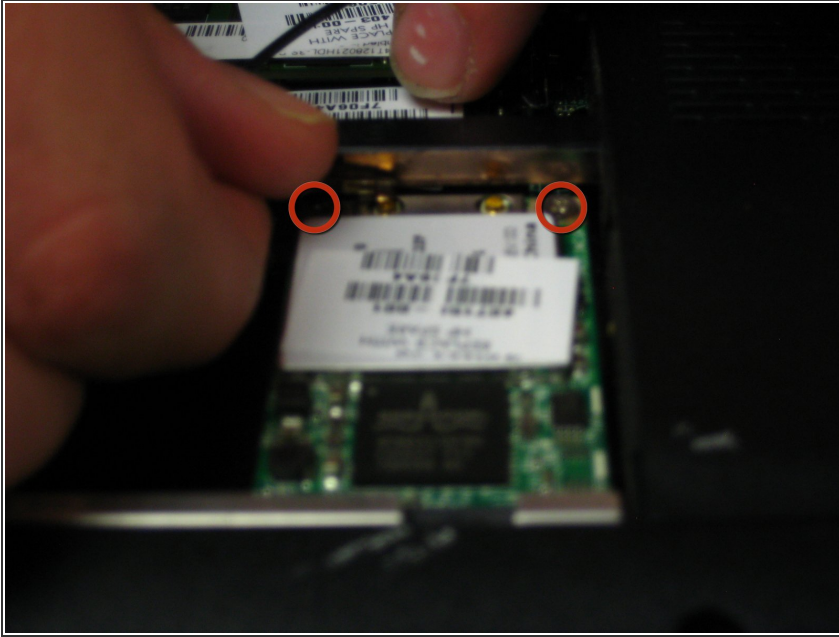
Step 2



- Use a pair of tweezers to disconnect both antennas from their sockets on the wireless card.

⚠ Be careful to pull on the contacts and not the wires. The crimps used to hold them to the wires are delicate.

Step 3



- Remove the two 3.7 mm Phillips screws securing the wireless card to the motherboard.
- ⓘ Upon removing the Phillips screws that secures the wireless card to the motherboard, the wireless card board should pop up from its top side.
- Grasp the wireless card and pull it straight out of its socket on the motherboard.

Step 4



- Wireless card remains.

To reassemble your device, follow these instructions in reverse order.