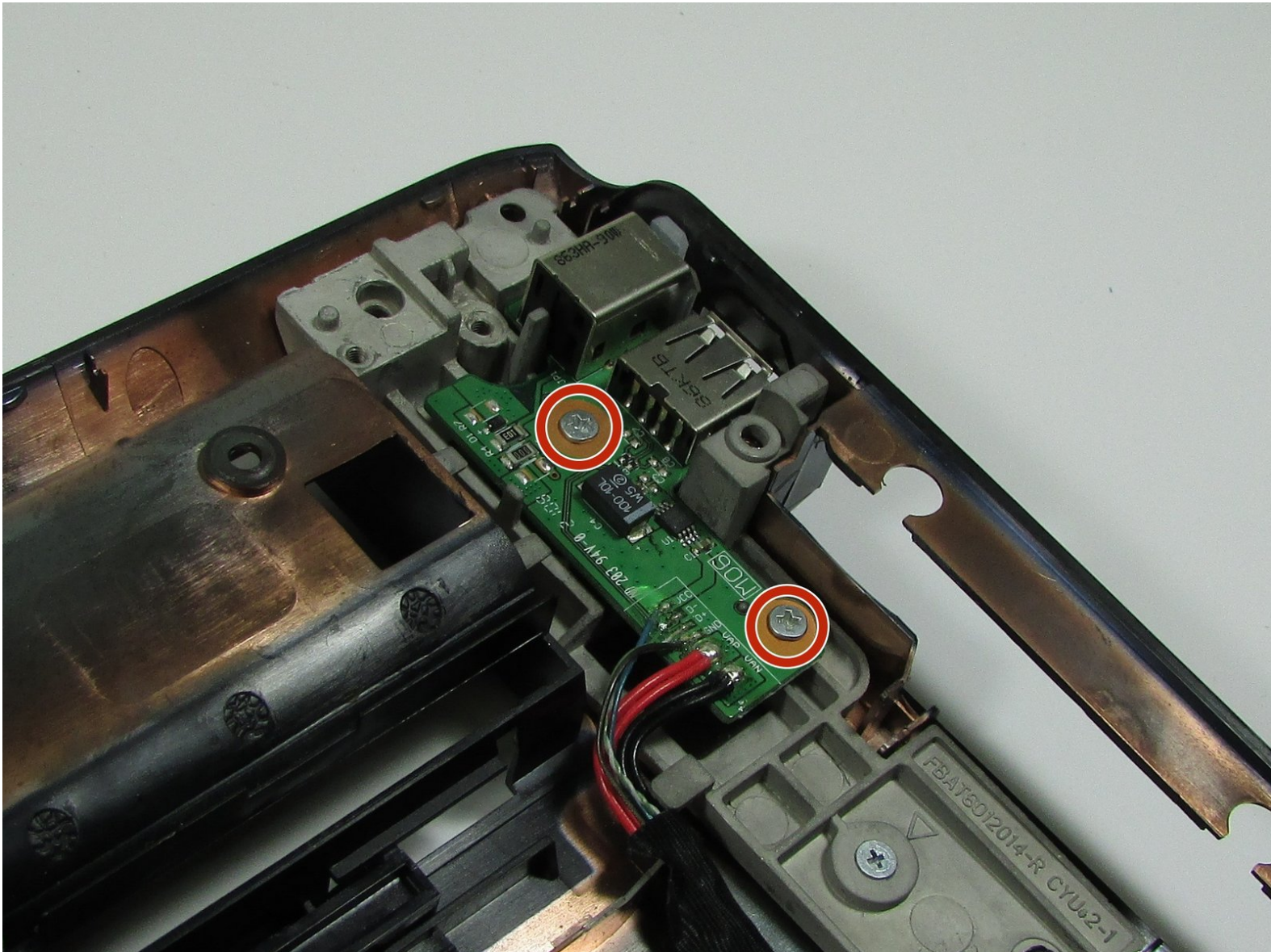




HP Pavilion dv6700 Charging Port Replacement

This will show you how to replace the charging port.

Written By: Alec Gramm



INTRODUCTION

Be sure to wear the anti-static guard strap, as you will be coming into contact with circuitry, and static electricity would permanently damage it.

TOOLS:

- [Anti-Static Wrist Strap](#) (1)
 - [Hex \(5\) Screwdriver](#) (1)
 - [Needle-nose Pliers](#) (1)
 - [Phillips #00 Screwdriver](#) (1)
 - [iFixit Opening Tools](#) (1)
-

Step 1 — Battery



- Locate battery on the bottom of the laptop.

Step 2



- Slide tab all the way over to the left until battery pops out. Lift out and remove battery.

Step 3 — Display/Monitor



- Remove the RAM port cover.
- ⓘ Screws will not fully remove. Loosen them until they turn freely.

Step 4



- Remove Hard Disk Drive (HDD) cover.
- ⓘ Screws will not fully remove. Loosen them until they turn freely.

Step 5



- Remove screws from the bottom.

Step 6



- Detach WiFi antenna wires.
- i** Be sure that the wires are labeled so you remember which ones go where.

Step 7



- Remove two screws.
- Use a needle-nose pliers to do the initial loosening, then switch to using a hex screwdriver (size 5) head to do the rest of the loosening.

Step 8




- Flip over HP Pavilion dv6700.
- Open up HP Pavilion dv6700.

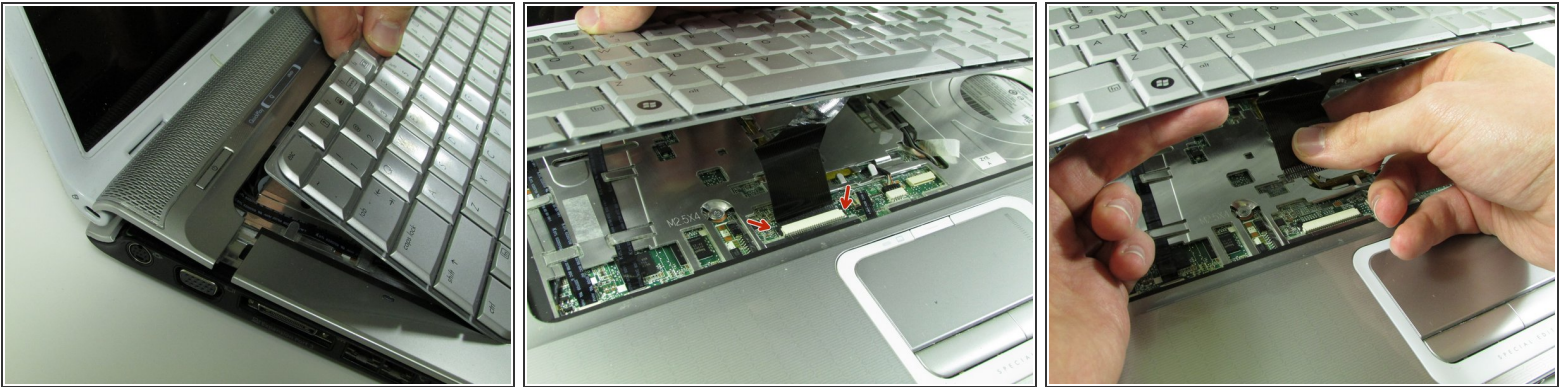
Step 9




- Use plastic opening tool to pry open the plastic bar above the keyboard.

 Be careful not to yank so hard that you rip out the ribbon cables underneath. There is enough room to pull safely, but use control to prevent damage.

Step 10

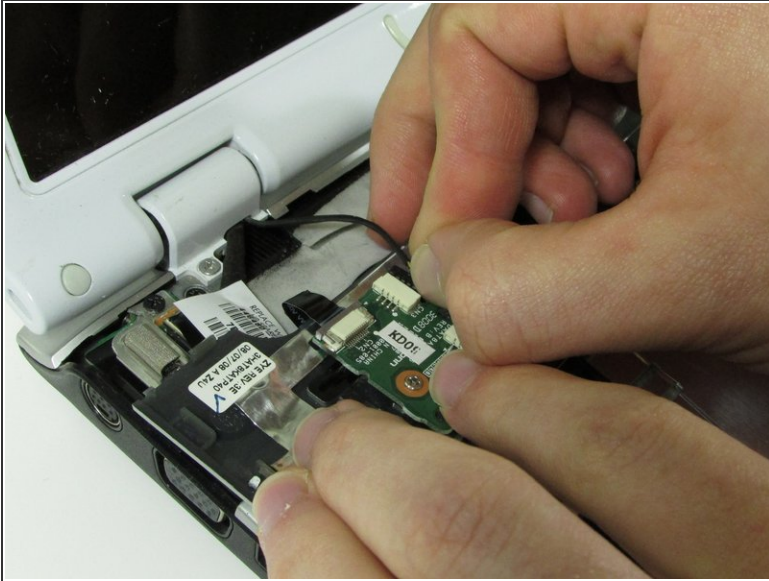


- Pull out and up on keyboard to remove it.


 Do not yank it all of the way out, as there is a ribbon cable underneath.

- Slide the two black locks on the side of the keyboard cable connection port up to release the cable.
- Grip the ribbon cable near the connection point and gently but firmly pull it out.

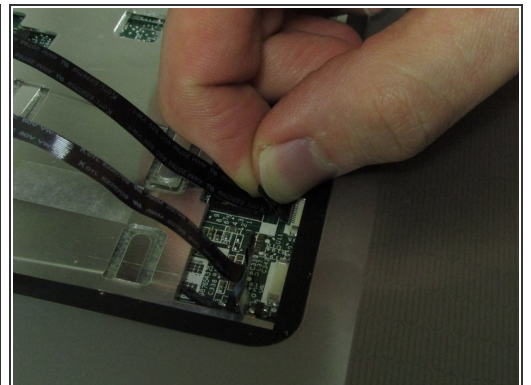
Step 11



- Flip over the plastic bar.
- Detach the display connector.

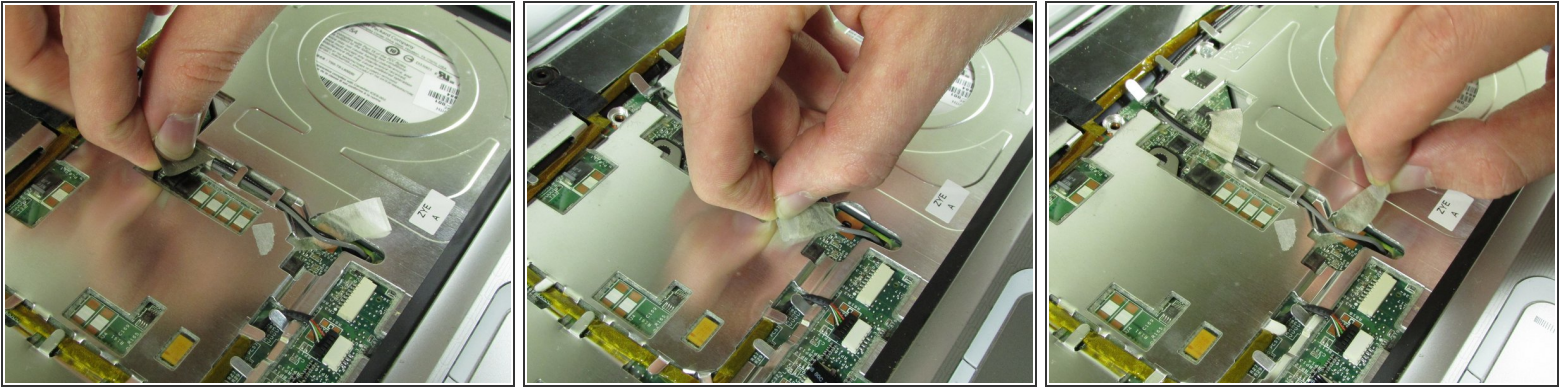
 Do not pull on the wires. Pull on the black plastic part or wedge a plastic opener or fingernail between the port and the connector.

Step 12



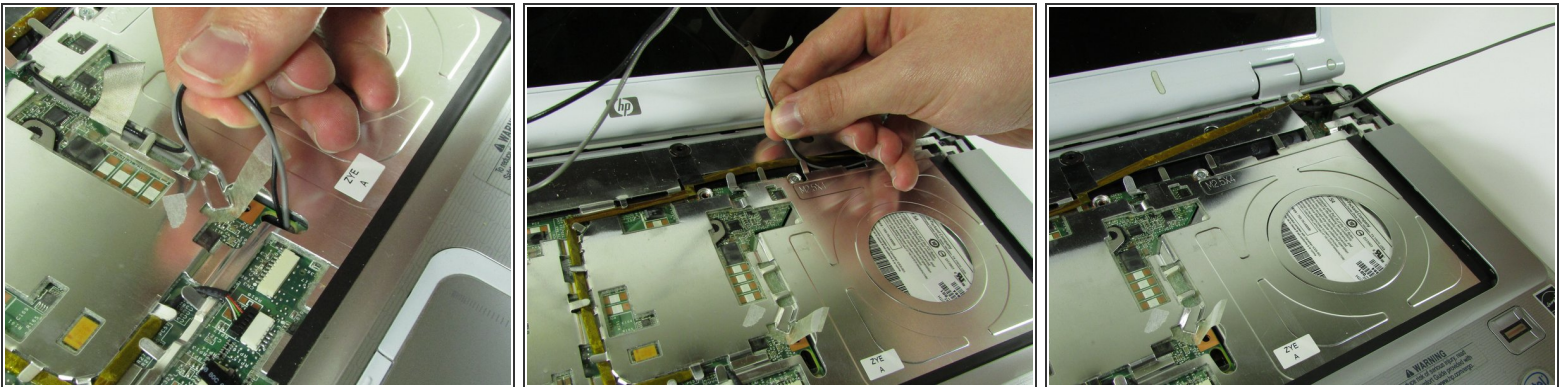
- Detach the ribbon cables.
- Pull from the area closest to the connection port gently but firmly.

Step 13



- Pull up on tape holding down wires.

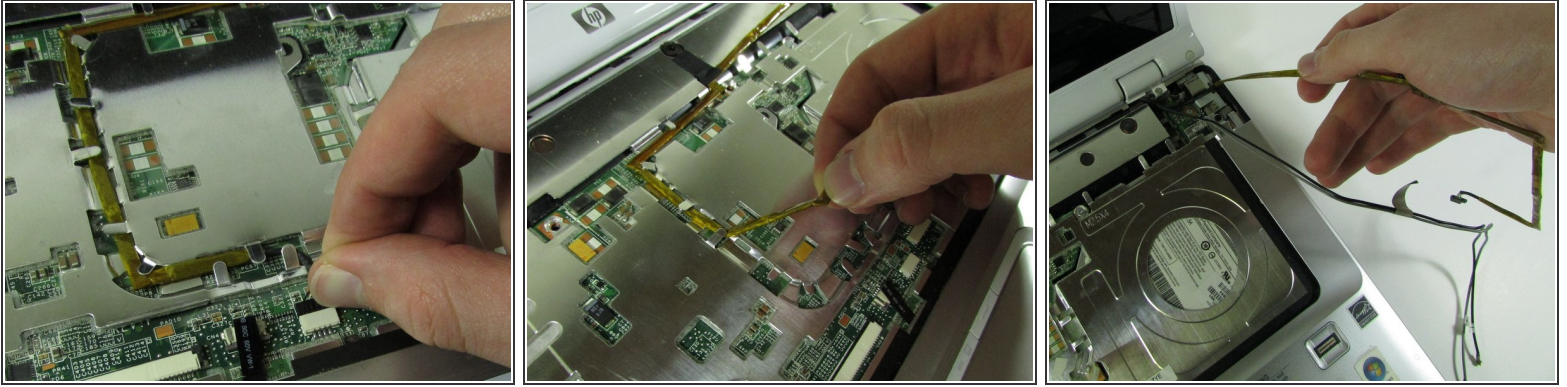
Step 14



- Pull up on the WiFi wires and out from under the metal tabs.

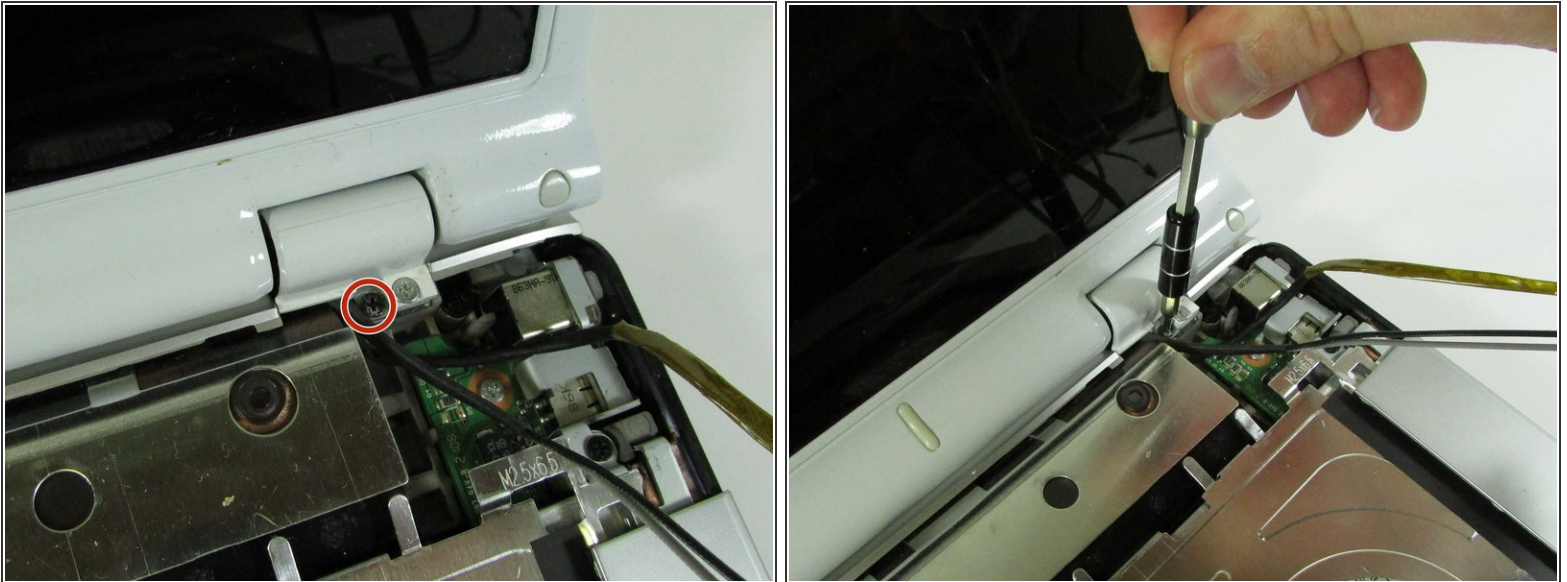
⚠ Do not yank them out. Let them hang loose once they are out from under the tabs.

Step 15



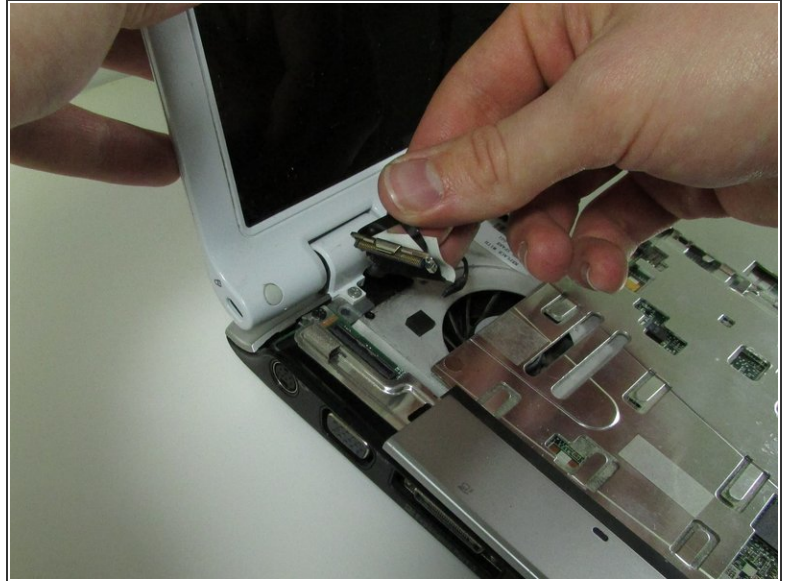
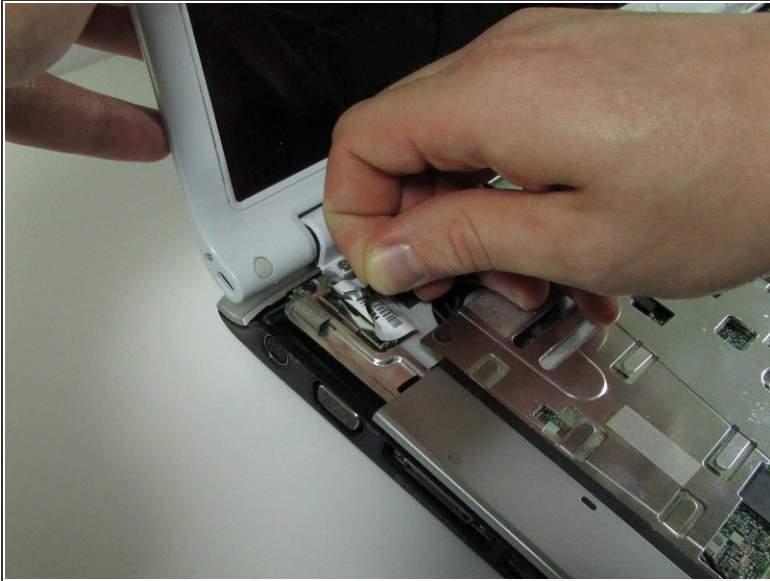
- Disconnect the connector from the port.
- Remove the wire from under the metal tabs.
- Let wire hang loose after removing under the tabs.

Step 16



- Remove the black screw in the top right corner.

Step 17



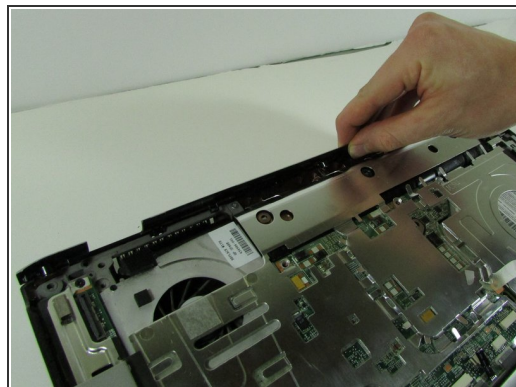
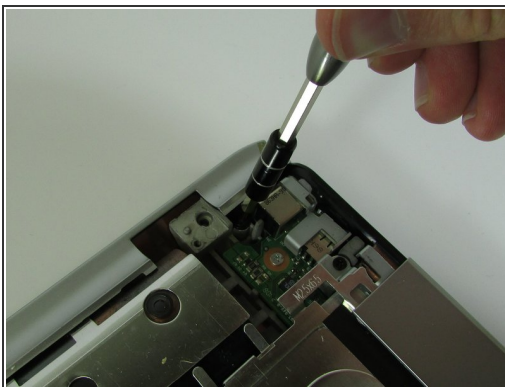
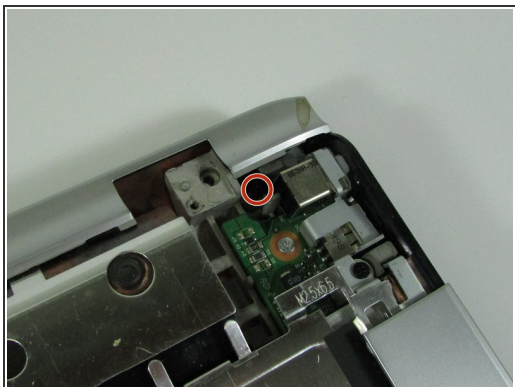
- Pull upward on the screen connector tab.
 - ⓘ It will be firmly secured, so don't be afraid to use a little extra force to pull it off.

Step 18



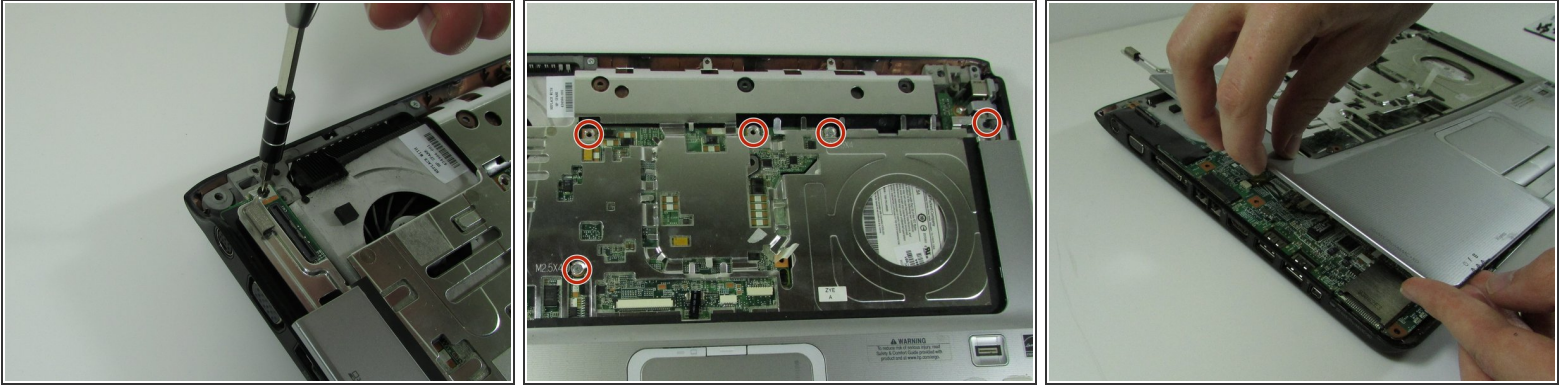
- Remove the black screw from the top left corner.
 - ⚠ Keep your hand on the screen to secure it, as once you remove this screw, it will come loose.
- Lift the screen off and set it aside.



Step 19 — Motherboard



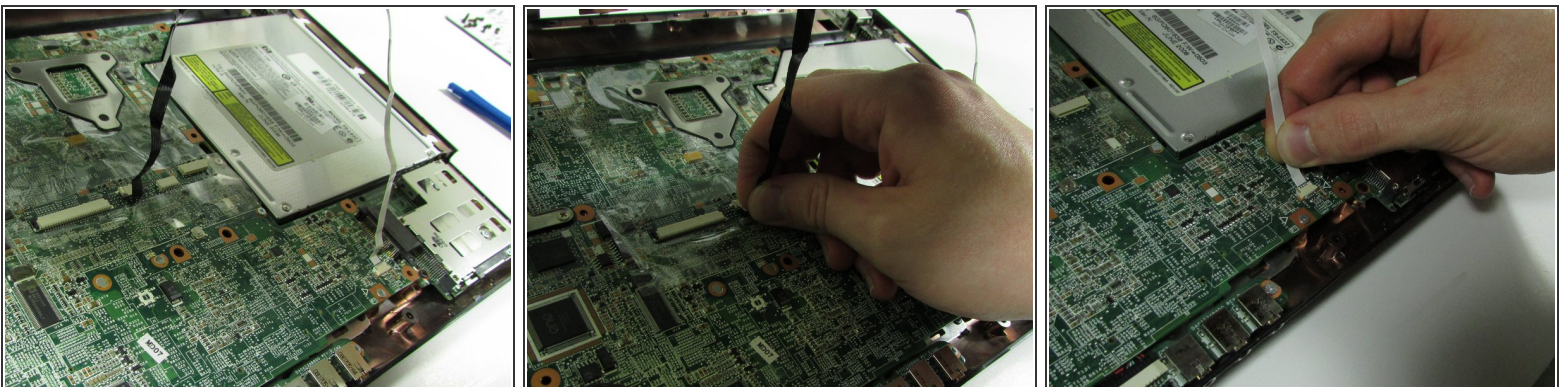
- Unscrew the black screw in the top right corner.
- Pull up on the top piece and remove it.

Step 20



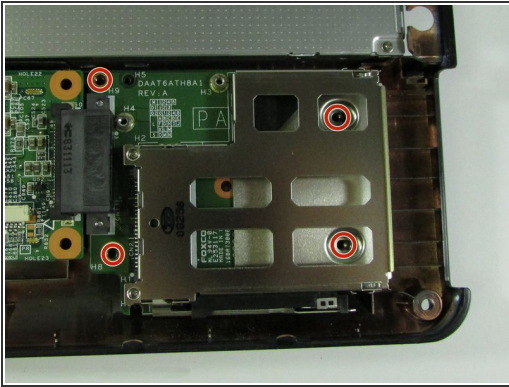
- Remove screw in top left corner.
 - Remove screws on motherboard cover.
 - Pull up on the cover to remove it.
-  You can use a plastic opener if it is hard to get your fingers under the cover's edges.
-  Do not pull hard on the cover, as there are two ribbon cables under the cover connected to the motherboard.

Step 21



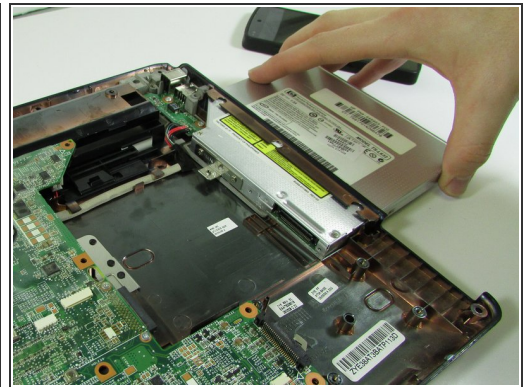
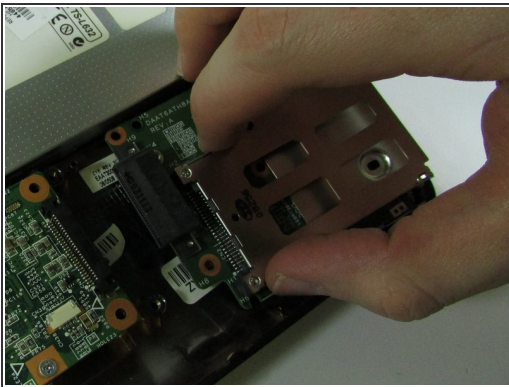
- Pull gently but firmly on the ribbon cables at the connection points to remove them

Step 22



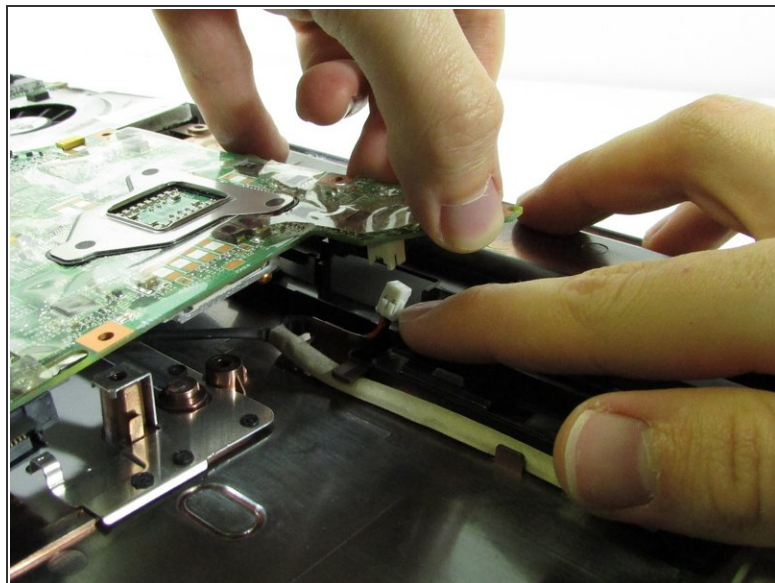
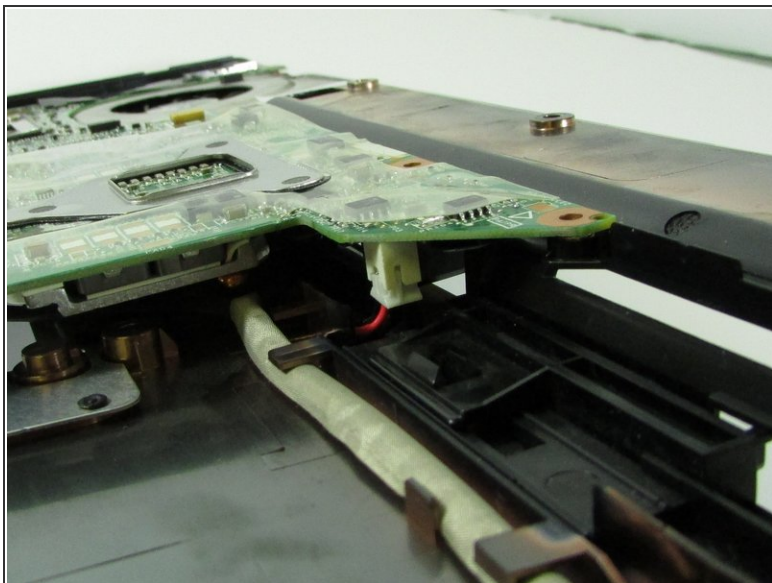
- Remove screws from the ExpressCard component.

Step 23



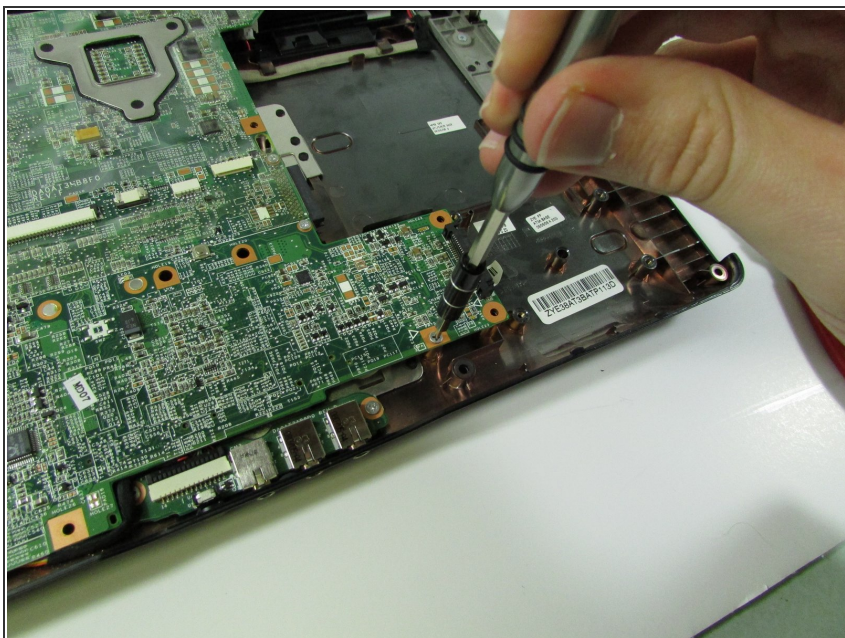
- Remove ExpressCard component by sliding it out.
- Remove Optical Drive by sliding it out.

Step 24



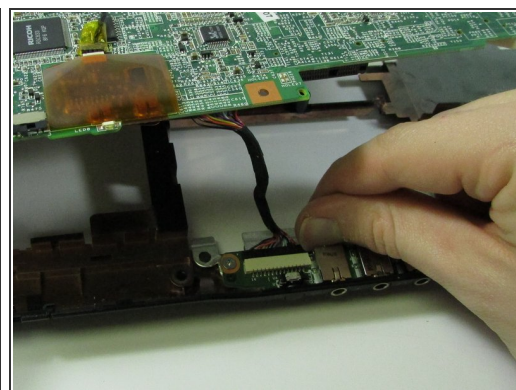
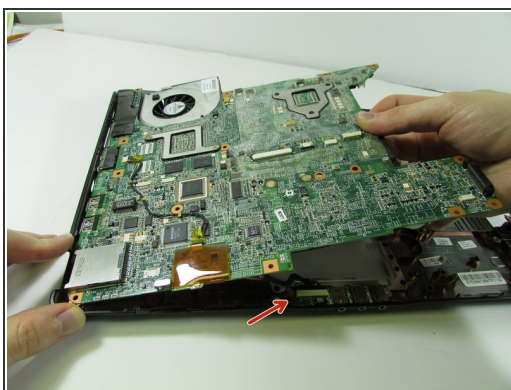
- Detach connector from the motherboard.
- ⓘ This piece is likely to be very hard to disconnect, so do not be afraid to use more force than normal.

Step 25



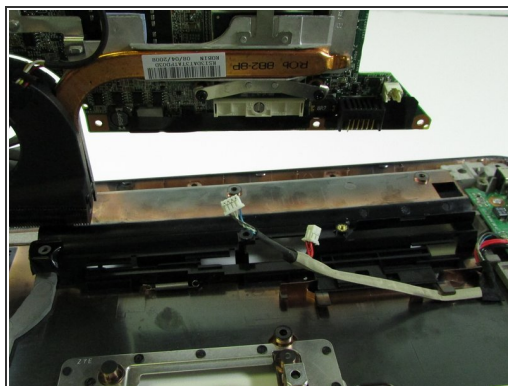
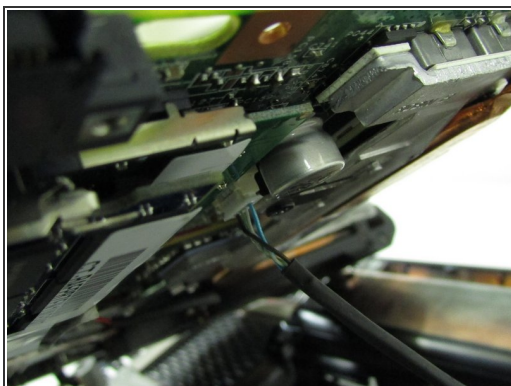
- Remove screw near where the ExpressCard component was.

Step 26



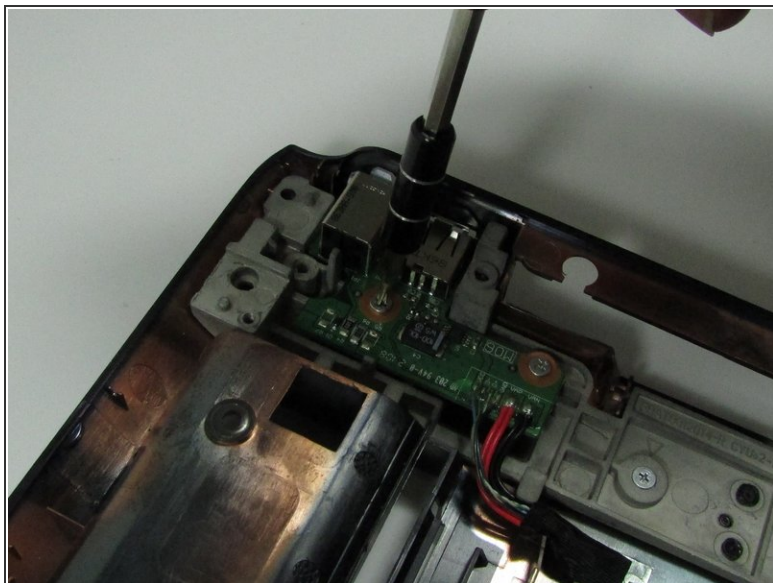
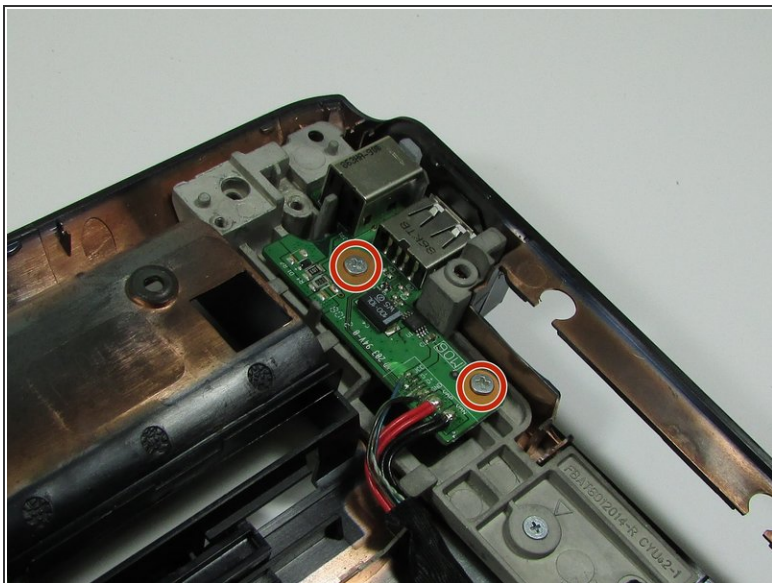
- Lift up motherboard.
- Detach the motherboard connector at the front under the motherboard.

Step 27



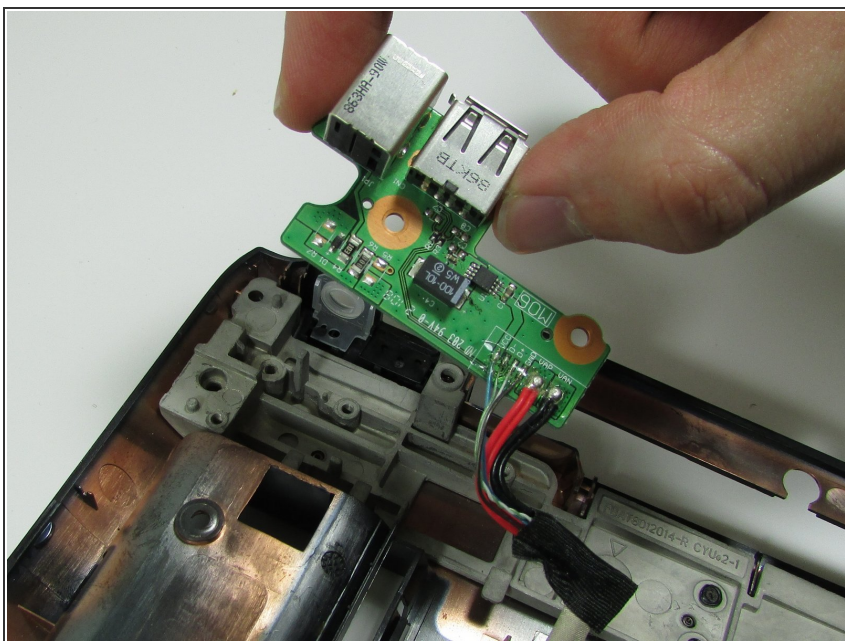
- Lift up and out the motherboard.
- Detach the connector under the motherboard.
- Remove the motherboard.

Step 28 — Charging Port



- Remove the screws securing the charging port.

Step 29



- Remove the charging port.

To reassemble your device, follow these instructions in reverse order.