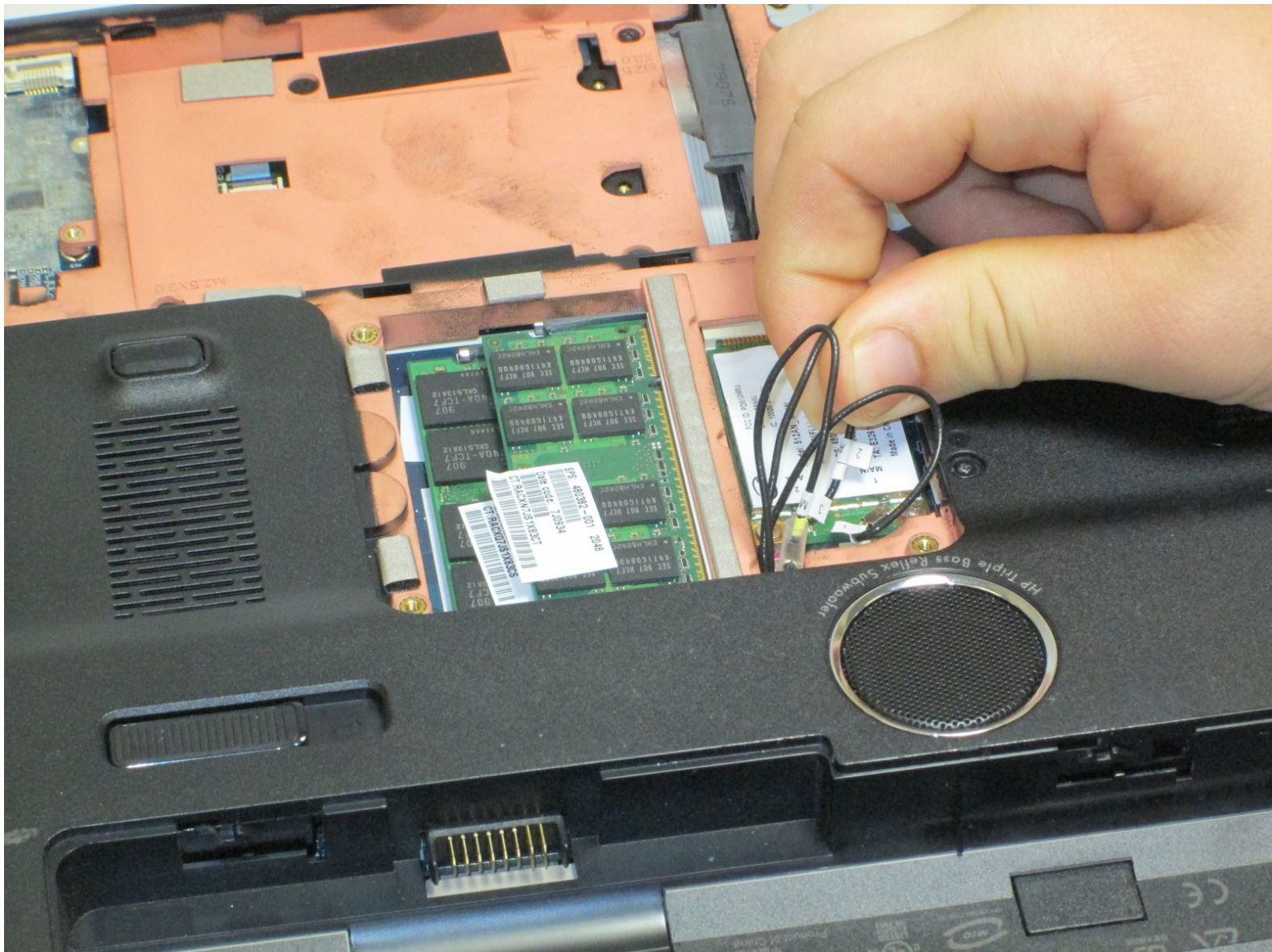




HP Pavilion dv7-1285dx Wifi Card Replacement

This guide will demonstrate how to replace the wifi card in the HP Pavilion dv1285dx.

Written By: Anmol Mathur





TOOLS:

- [Phillips #1 Screwdriver](#) (1)
- [iFixit Opening Tools](#) (1)



PARTS:

- [2 Replacement HP Wifi cards](#) (1)

Step 1 — Battery



- Ensure the device is powered down and unplugged.
- Turn the device upside down with the battery compartment facing you.
- Slide the black slider to the right and lift the battery out of its compartment.

Step 2 — Back Plate



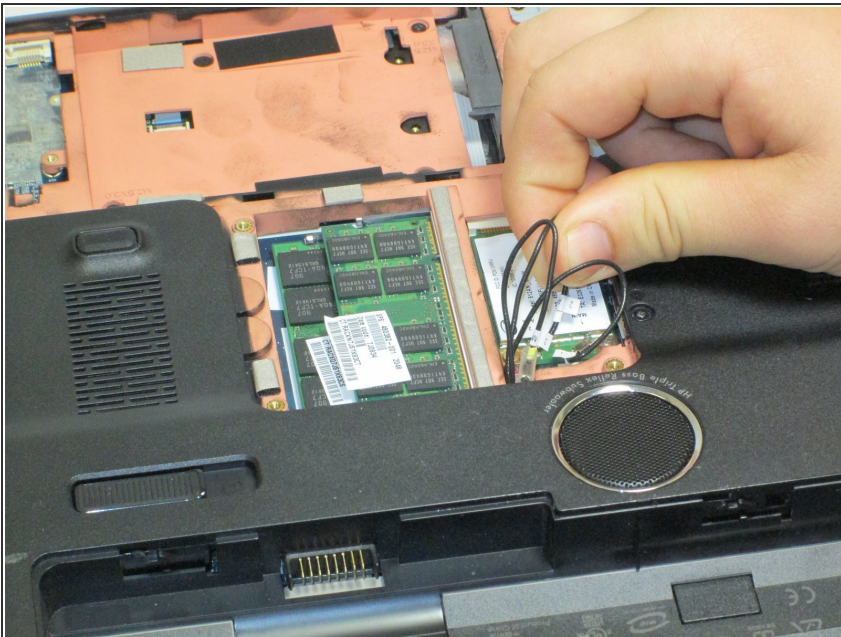
- Locate and remove the six Phillips PM2.5×7.0 screws around the perimeter of the back plate.
- ⓘ These screws do not completely detach from the device when unscrewed.

Step 3



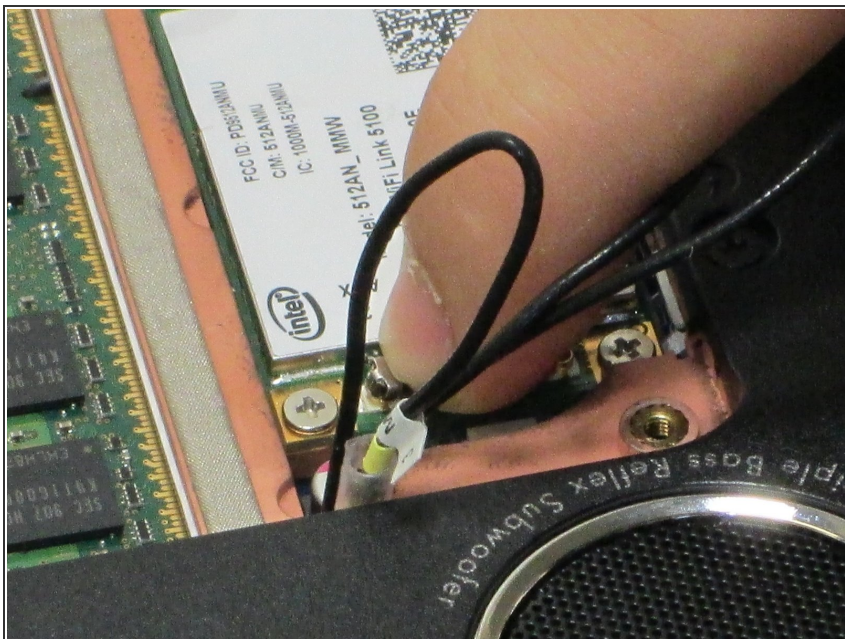
- Use the plastic opening tool to lift up the back plate and set it aside.

Step 4 — Wifi Card



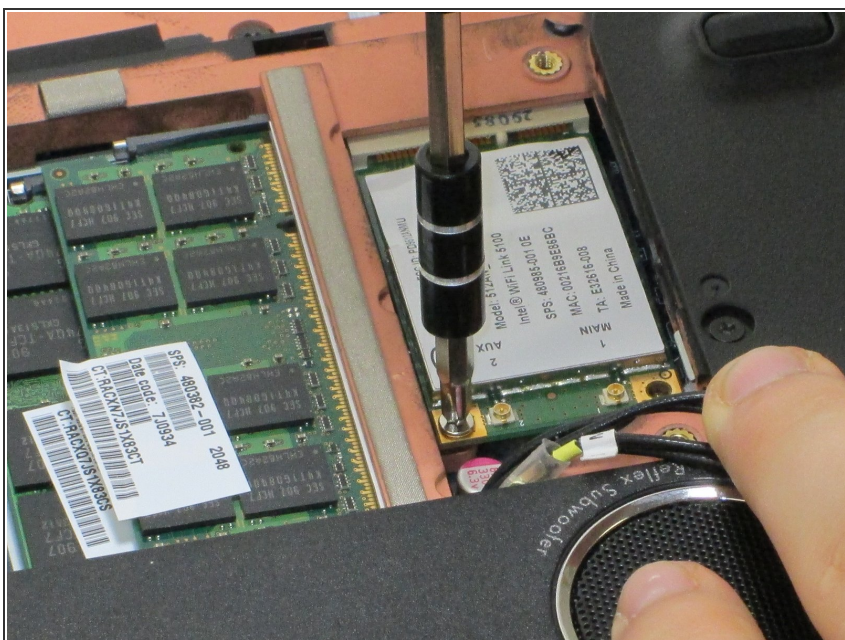
- Locate the wifi card to the right of the RAM.

Step 5



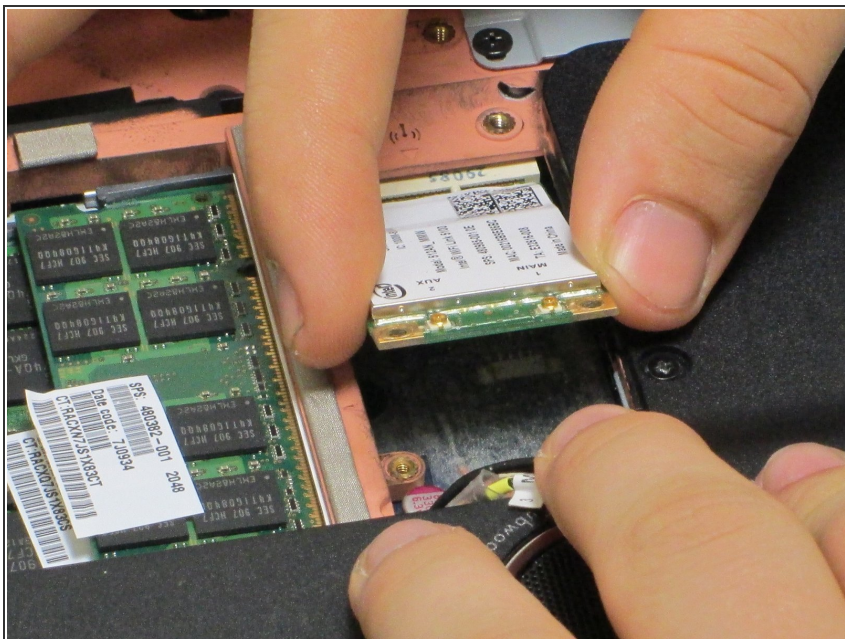
- Unplug antenna cables 1 and 2 from their leads.
- ⓘ Antenna cable 3 is not used.

Step 6



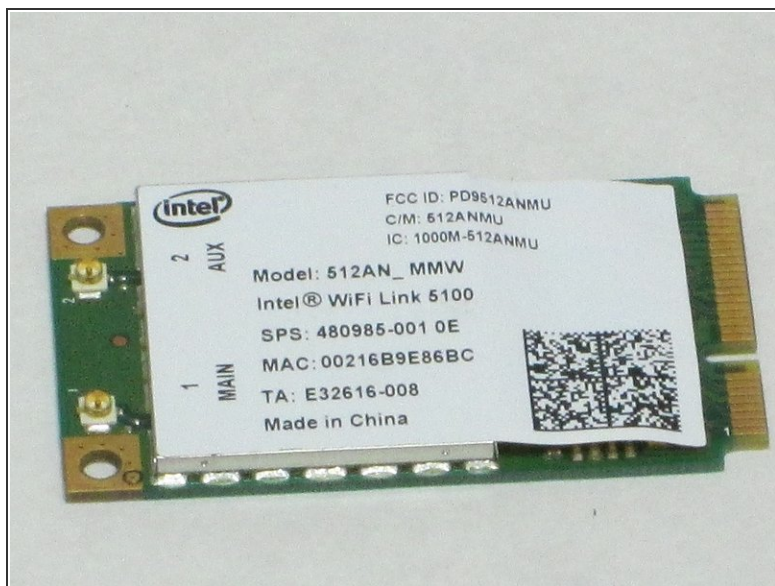
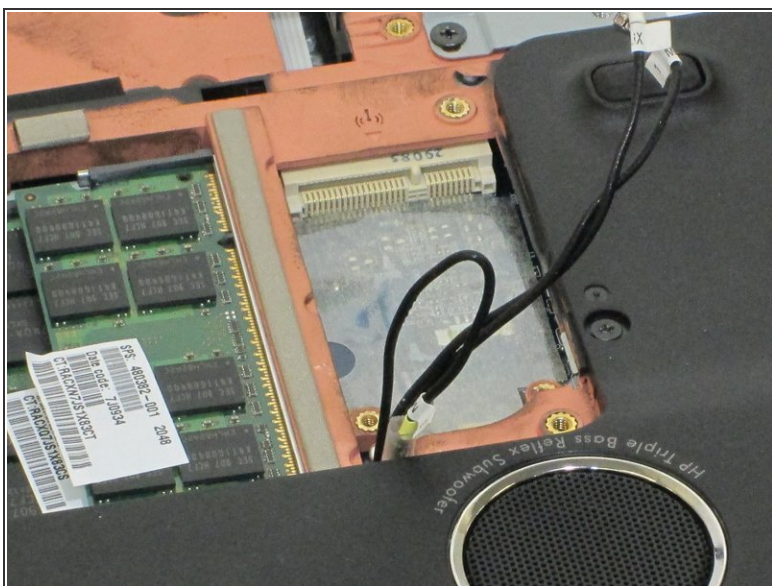
- Remove the two Phillips head screws located on the battery compartment side of the wifi card.

Step 7



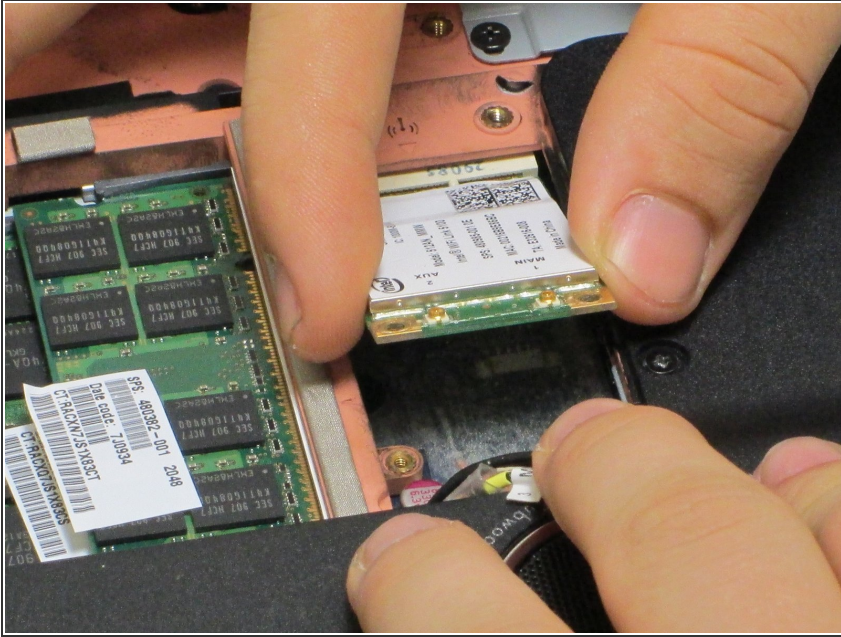
- Gently lift the wifi card up to a 45 degree angle from the side with screws.

Step 8



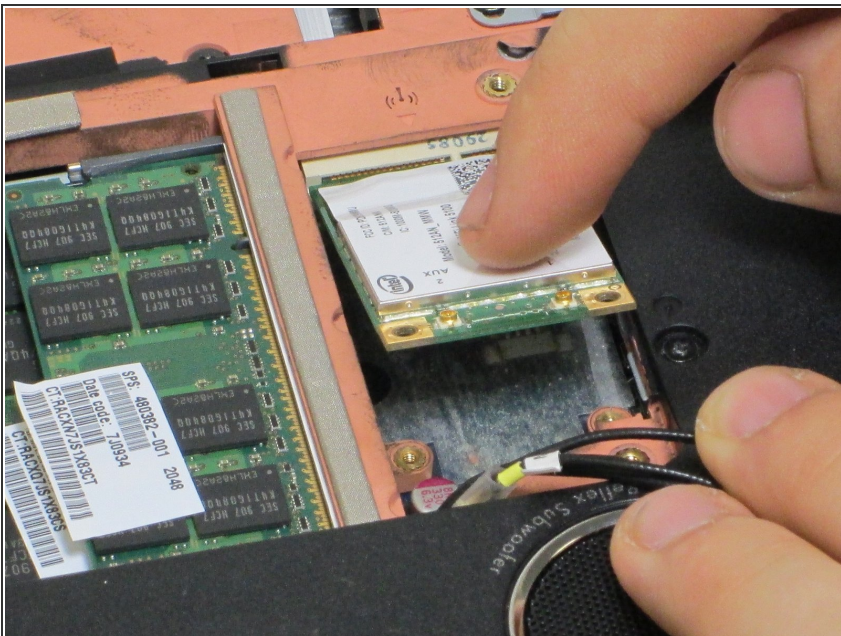
- Unplug the wifi card.

Step 9



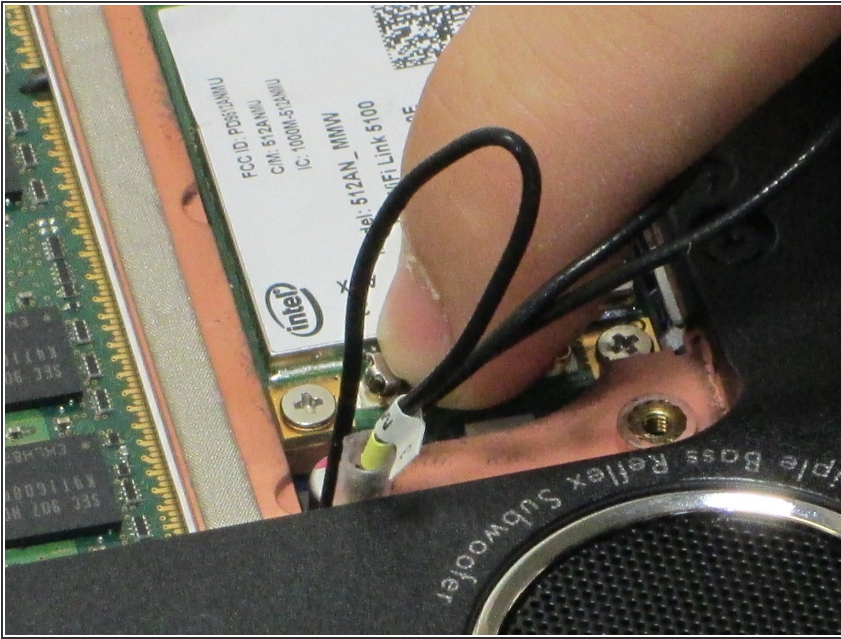
- ⓘ These next steps are for installing your replacement wifi card. These steps are very important to ensure that you do not damage your device.
- Fully insert the replacement wifi card at a 45 degree angle, ensuring that the notch on the card lines up with the peg on the plug.

Step 10



- Gently push the wifi card down until the screws can be replaced.

Step 11



- ✦ Connect the antenna cable 1 with lead 1 and connect antenna cable 2 with lead 2.
- ⓘ Wire 1 needs to be connected to lead 1 and wire 2 needs to be connected to lead 2.
- ⓘ Wire 3 and lead 3 are not used.

To reassemble your device, follow these instructions in reverse order.