



HP Pavilion dv7t-7000 Wi-Fi Card Replacement

A guide to show how to replace the Wi-Fi card in the HP Pavilion dv7t-7000.

Written By: Eric Easley



INTRODUCTION

A guide to show how to replace the Wi-Fi card in the HP Pavilion dv7t-7000.



TOOLS:

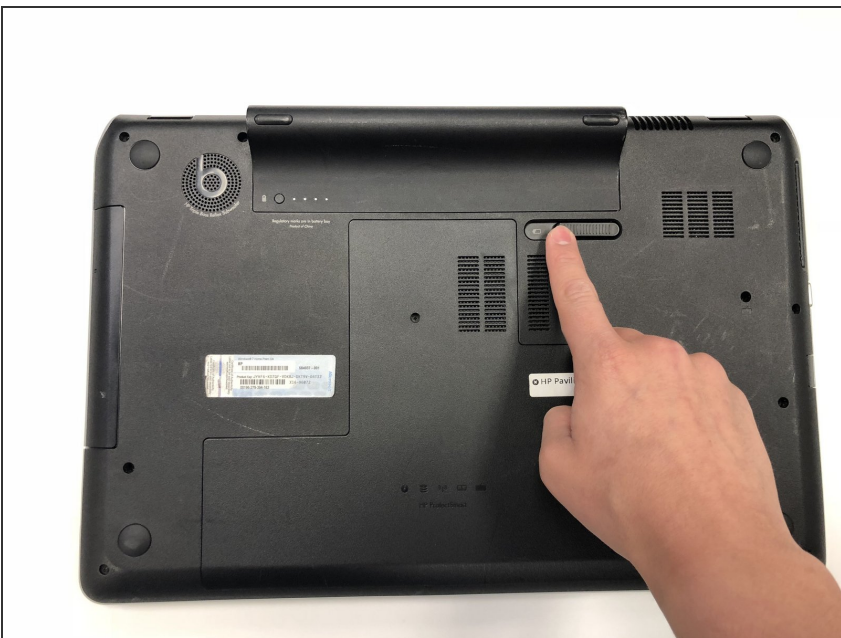
- [Phillips #00 Screwdriver](#) (1)
 - [Spudger](#) (1)
-

Step 1 — Battery



- Turn the computer off and disconnect it from all power sources.

Step 2



- Slide the battery release switch to the left.

Step 3



- Hold the release switch all of the way to the left and your other hand to pull the battery out.

Step 4 — Back Panel



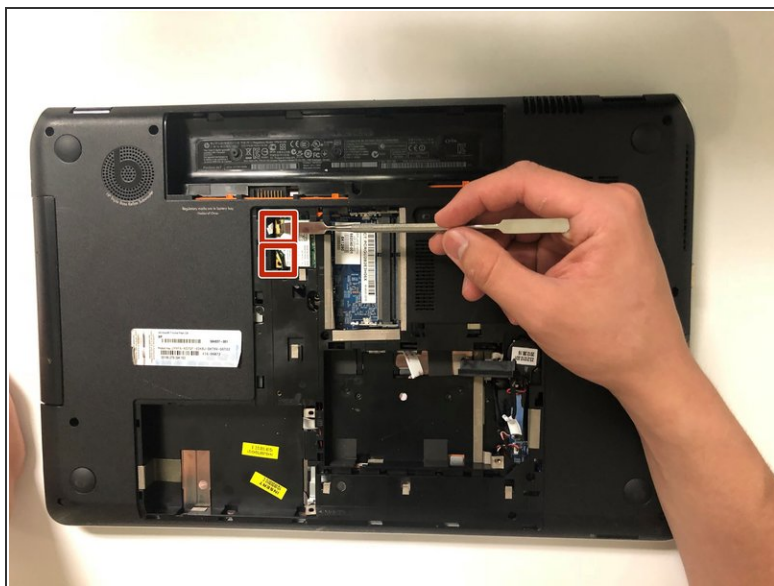
- Unscrew the single Phillips #00 screw.
- ⓘ Screw will not come out, it is connected to the panel

Step 5



- Remove service hatch by sliding away from the computer and lifting up.

Step 6 — Wi-Fi Card



- Use the flat end of a spudger to pop off the antenna connectors.

Step 7



- Remove single Phillips #00 screw.
- Pull the card out by hand.

To reassemble your device, follow these instructions in reverse order.