



# HP Pavilion g4-1117dx Fan Replacement

How to replace the HP Pavilion g4-1117dx fan.

Written By: Robert Hamilton



## INTRODUCTION

The fan is one of the more tedious components of your device to remove. It has several prerequisite guides, but when you get to the fan, it is very easy to remove.



### TOOLS:

- [JIS #0 Screwdriver](#) (1)



### PARTS:

- [HP Pavilion g-4 Battery](#) (2)

## Step 1 — Battery



- Slide pill shaped tab to the other side of the channel.

## Step 2



- Remove battery while keeping the tab to the side.

### Step 3 — L-Shaped Back Panel



- Unscrew the two screws JIS #0 located on opposite sides of the panel.

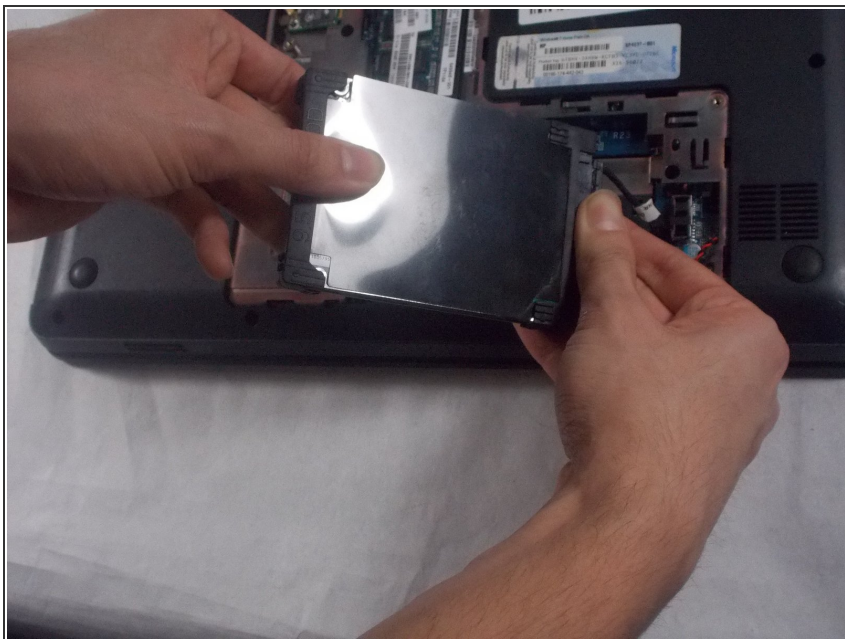
❗ Screws are attached to the panel and will not fully come out.

### Step 4



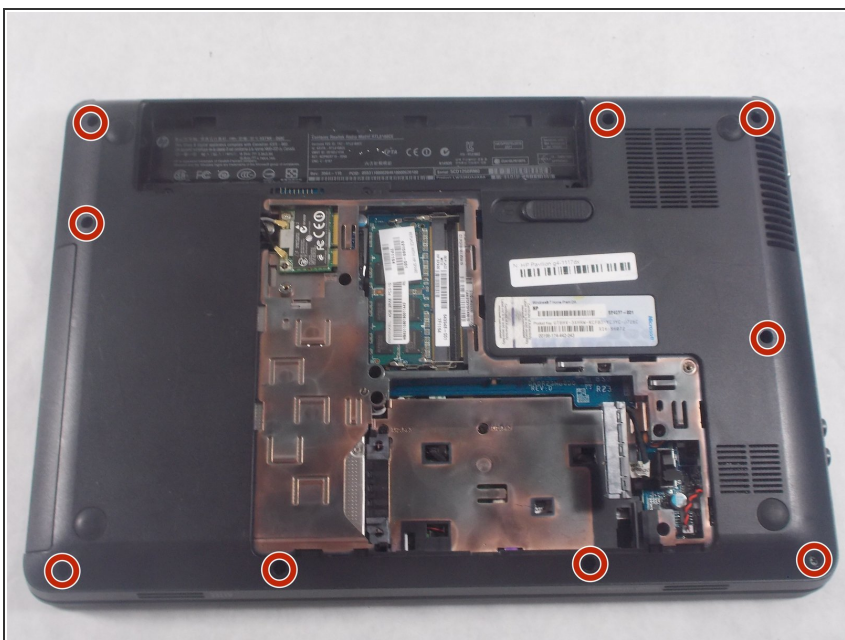
- Carefully pry off the L-shaped panel.

## Step 5 — Hard Drive



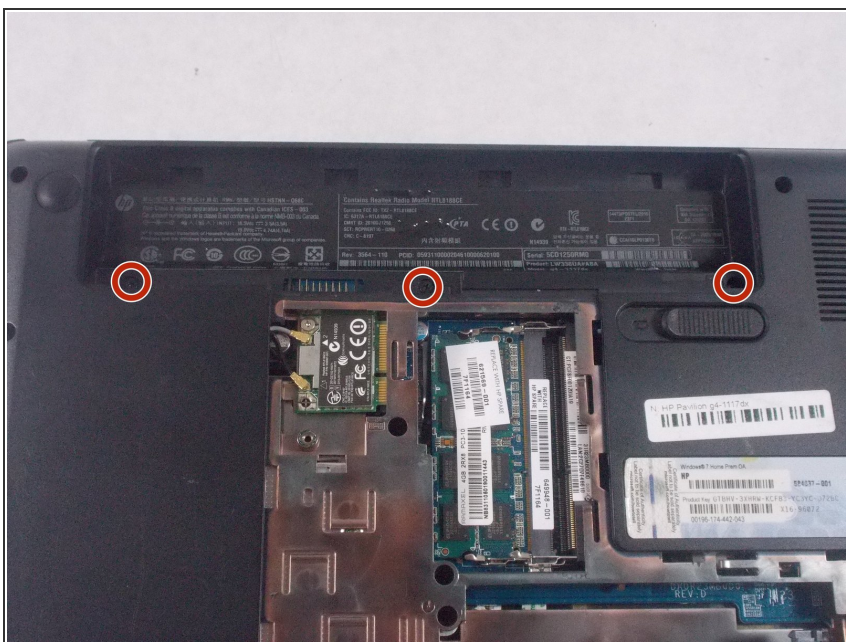
- Pull out and unplug the tab on the right hand side.

## Step 6 — Larger Back Panel



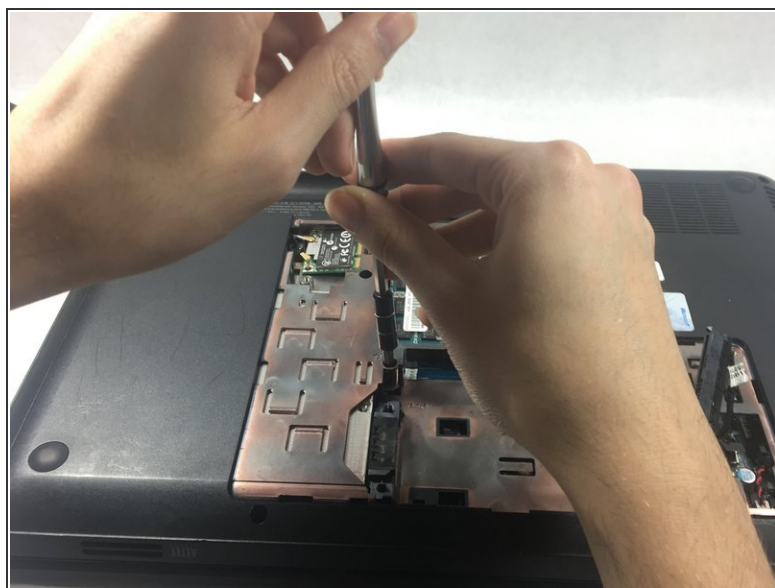
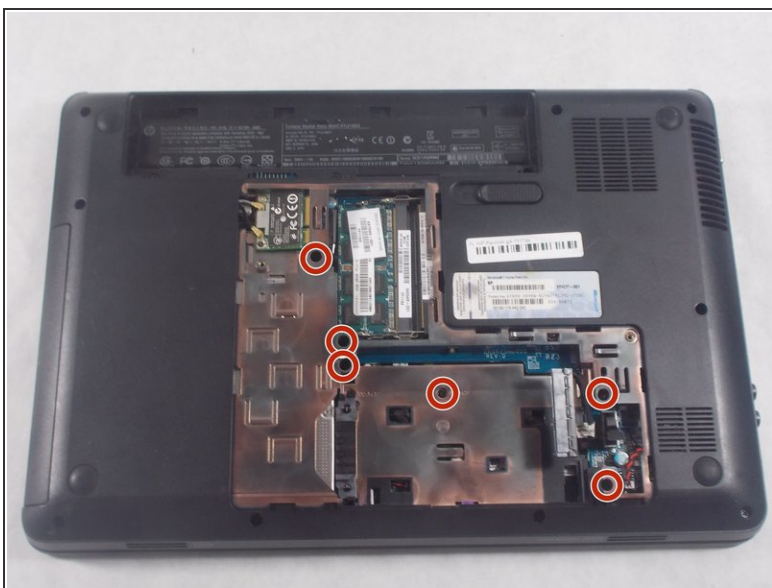
- Unscrew all nine 6.0mm JIS #0 screws located on the border of the back panel.

## Step 7



- Remove 3 screws located where the battery previously was.

## Step 8



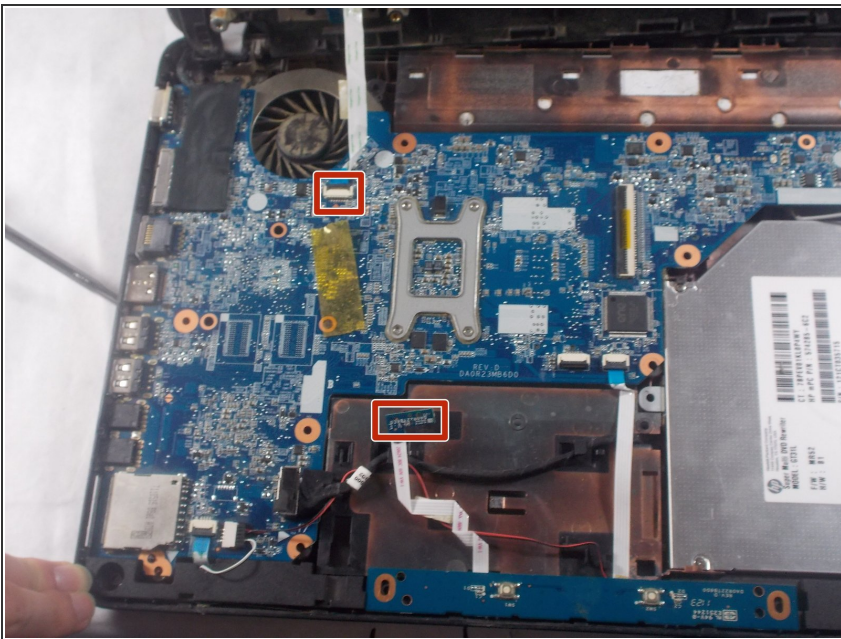
- Remove 6 screws located under the spot where the smaller L-shaped panel was located.

## Step 9



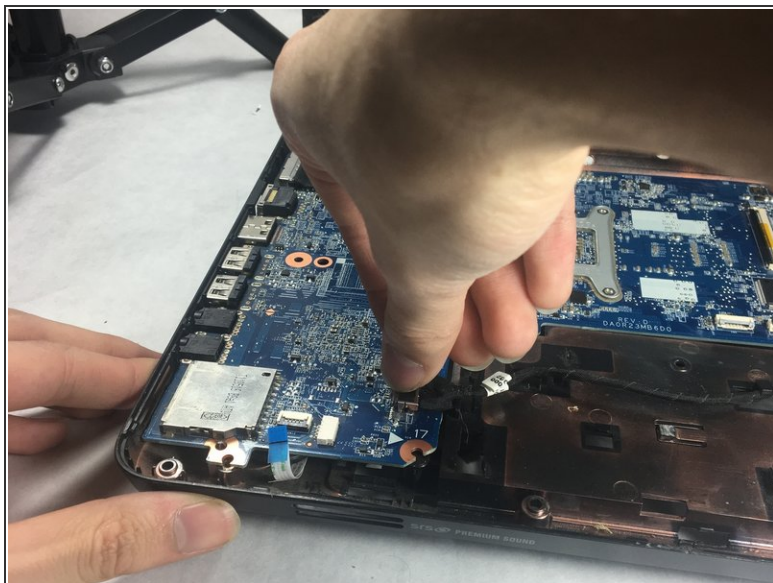
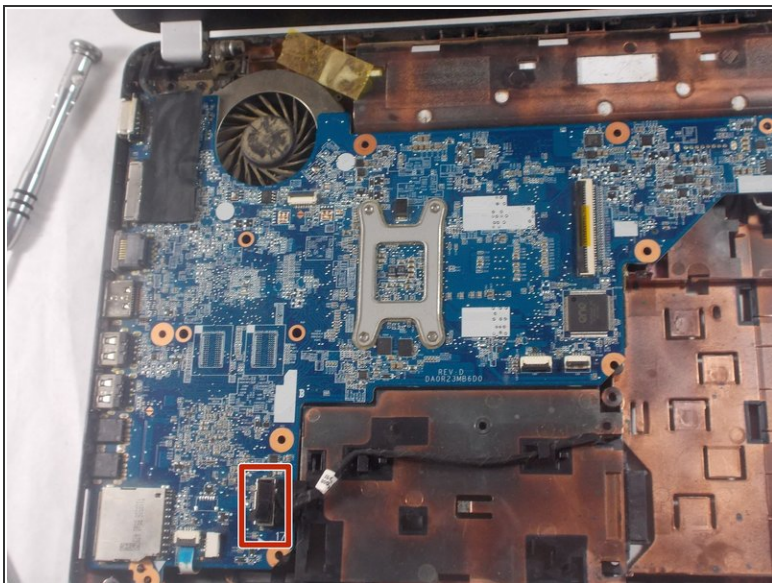
- Slowly pry off the keyboard from the back panel.
- ⓘ Between the back panel and the keyboard there are two ribbon wires.
- ⚠ Remove slowly to not break the back panel. If it does not come off easily, check to see if all screws are removed.

## Step 10



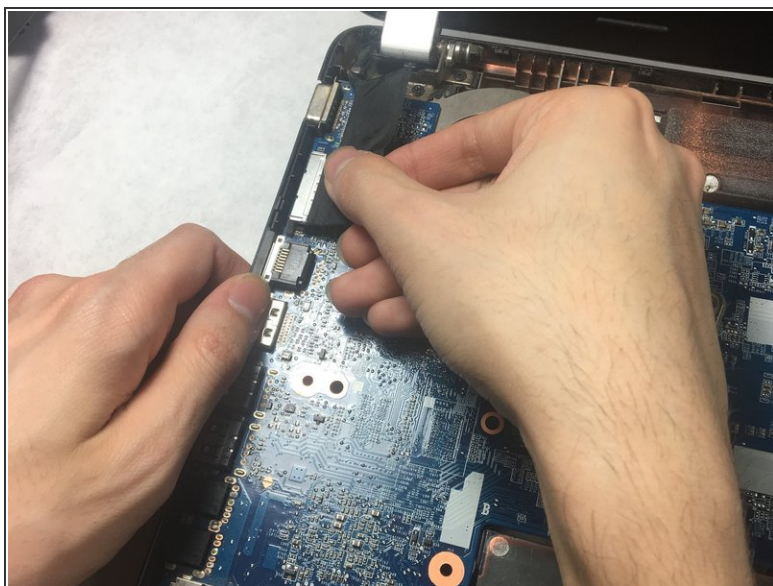
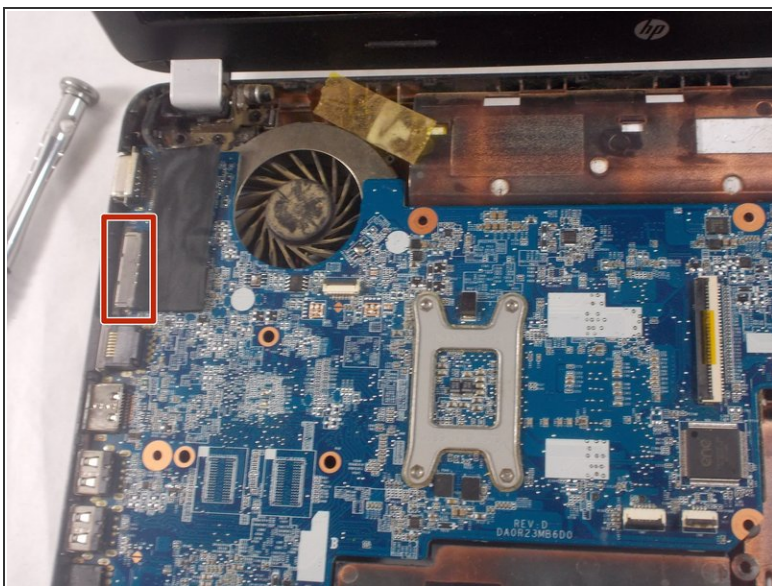
- Unplug wires connecting back panel to keyboard.

## Step 11 — Motherboard



- In lower left hand corner, pull on black tab to unplug the disc drive.

## Step 12



- In upper left hand corner, unplug the large black electrical tape covered laptop plug.

## Step 13 — Fan



- Unscrew the four screws JIS #0 screws on the back side of the motherboard.
- ⓘ Screws will loosen but do not come completely out.
- ⓘ The screws are the only thing keeping the fan attached to the motherboard.

To reassemble your device, follow these instructions in reverse order.