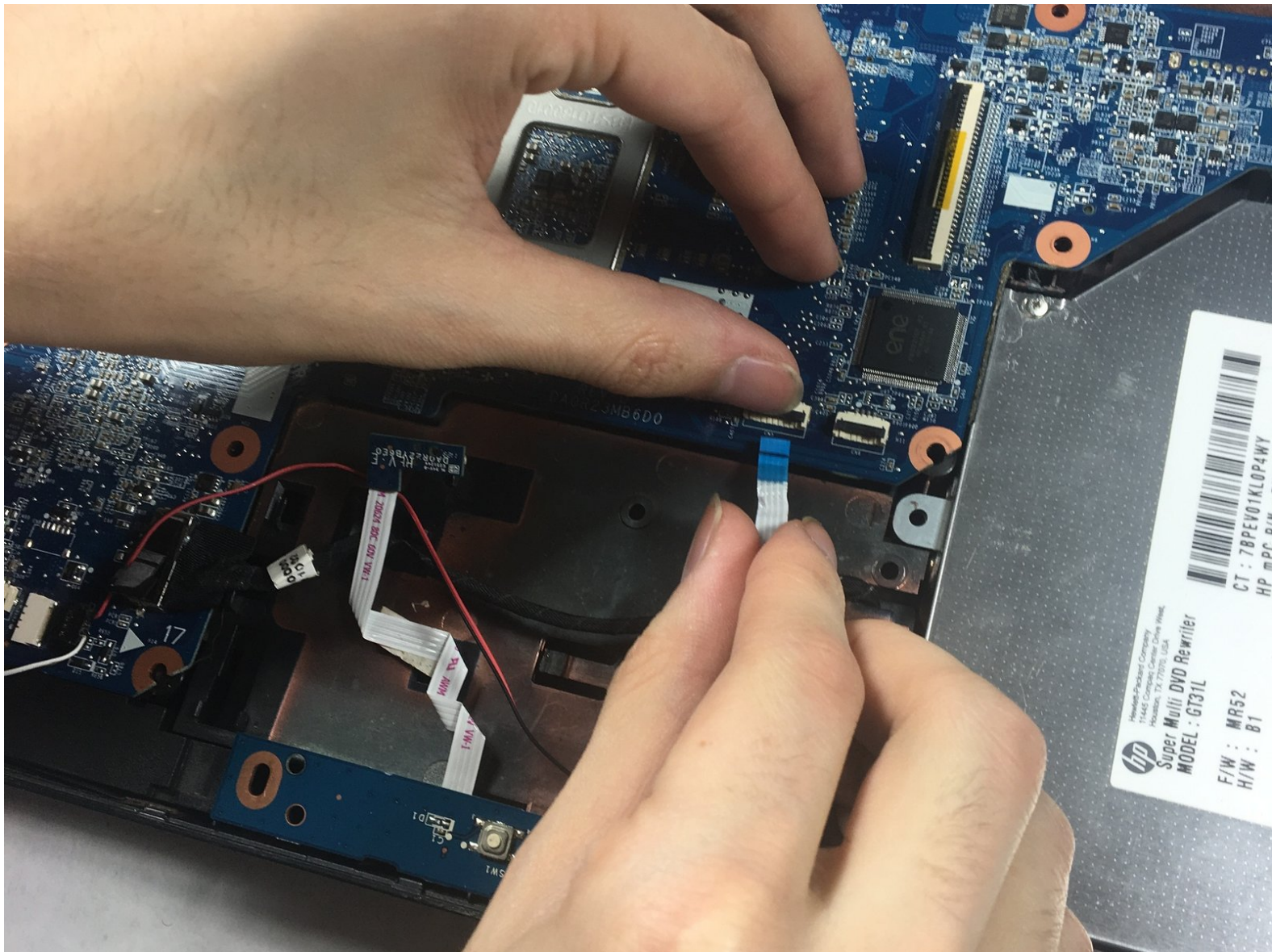




HP Pavilion g4-1117dx Trackpad Replacement

How to replace a HP Pavilion g4-1117dx trackpad.

Written By: Robert Hamilton



INTRODUCTION

Unlike other laptops and computers, the trackpad is a part of the keyboard so it can't really be replaced without replacing the entire keyboard. A much simpler solution that we show in this guide requires the removal and replacement of a small ribbon-like connector.



TOOLS:

- [JIS #0 Screwdriver](#) (1)



PARTS:

- [HP Pavilion g-4 Battery](#) (1)

Step 1 — Battery



- Slide pill shaped tab to the other side of the channel.

Step 2



- Remove battery while keeping the tab to the side.

Step 3 — L-Shaped Back Panel



- Unscrew the two screws JIS #0 located on opposite sides of the panel.

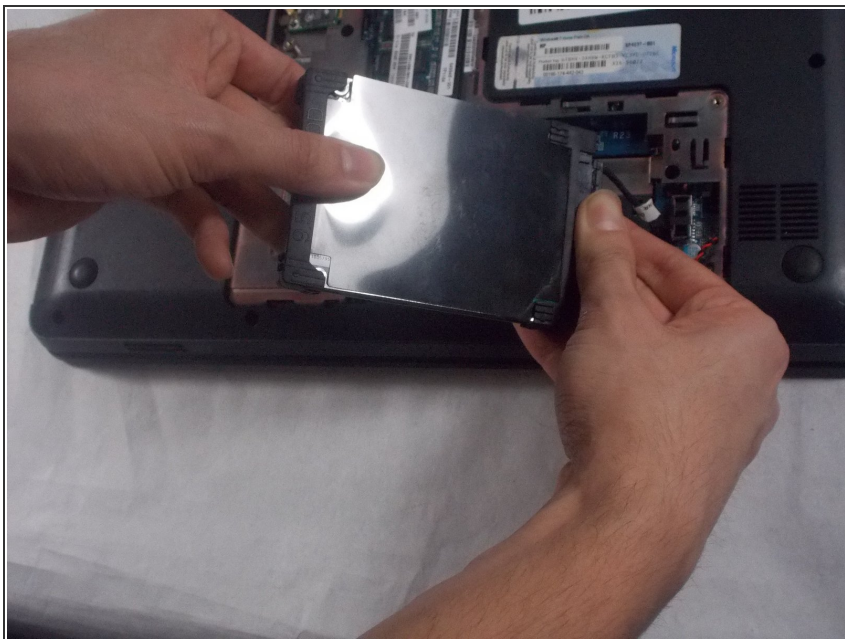
ⓘ Screws are attached to the panel and will not fully come out.

Step 4



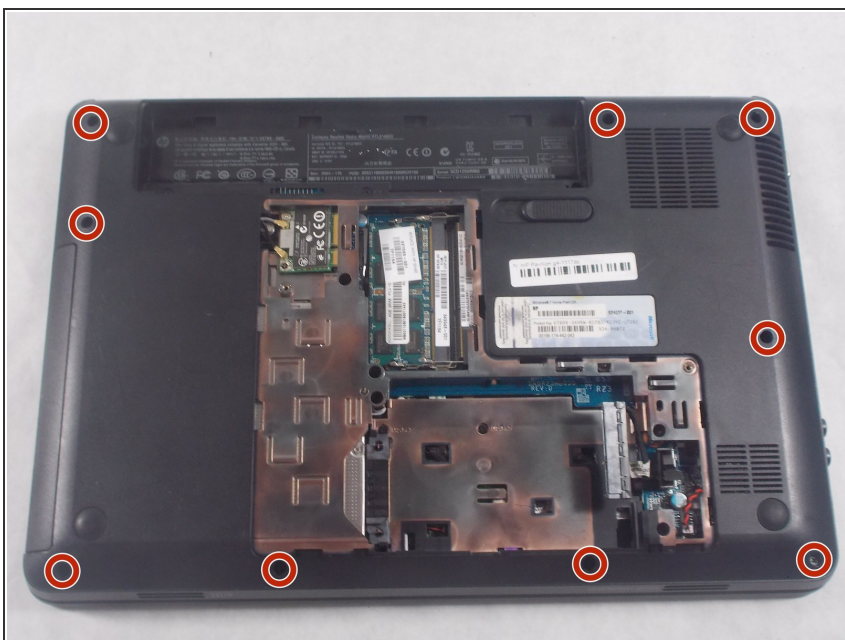
- Carefully pry off the L-shaped panel.

Step 5 — Hard Drive



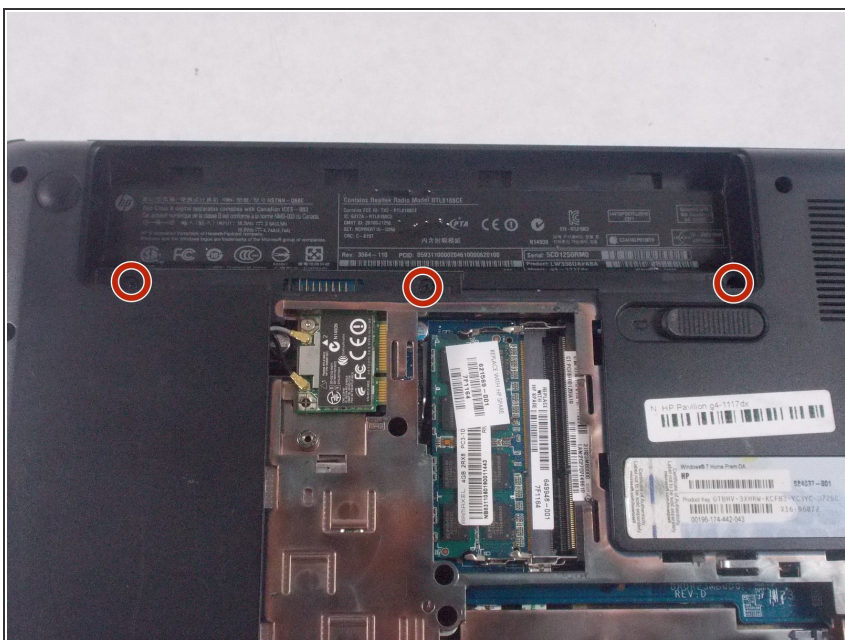
- Pull out and unplug the tab on the right hand side.

Step 6 — Larger Back Panel



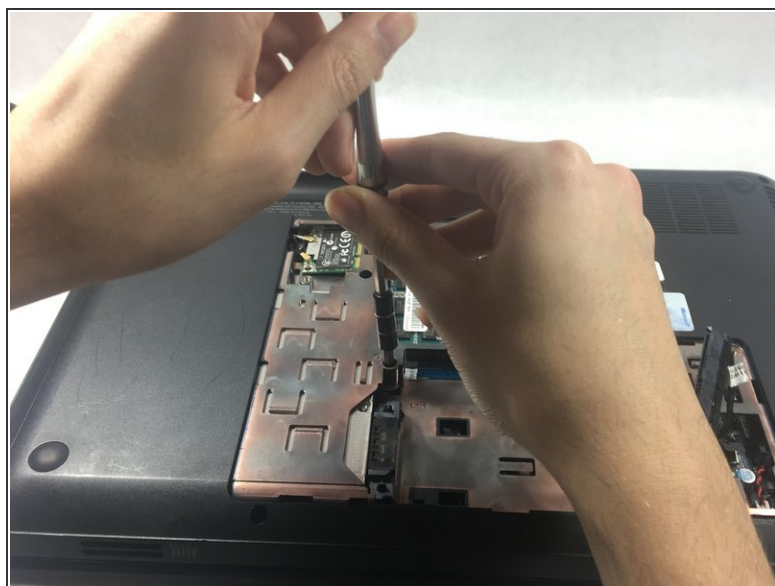
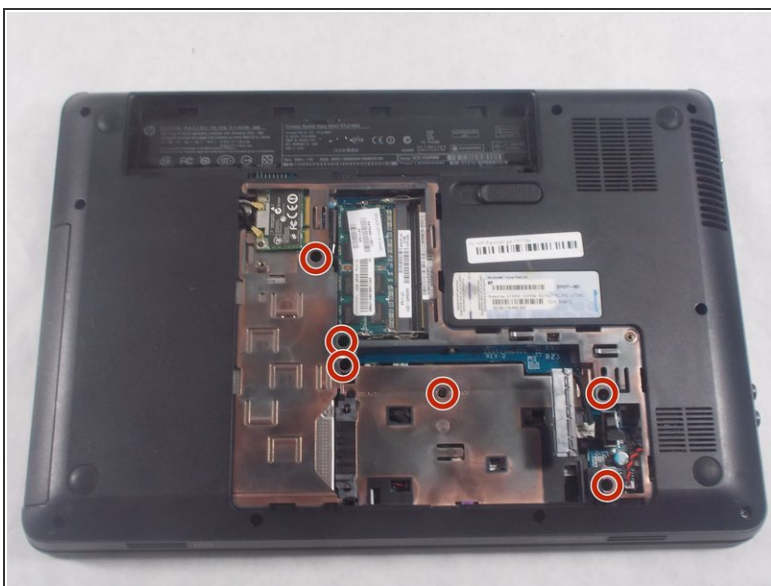
- Unscrew all nine 6.0mm JIS #0 screws located on the border of the back panel.

Step 7



- Remove 3 screws located where the battery previously was.

Step 8



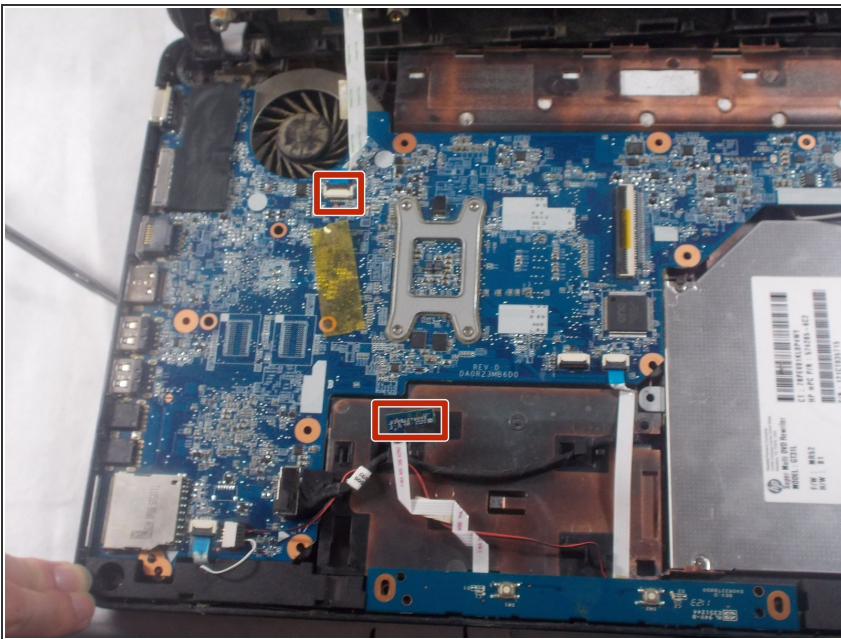
- Remove 6 screws located under the spot where the smaller L-shaped panel was located.

Step 9



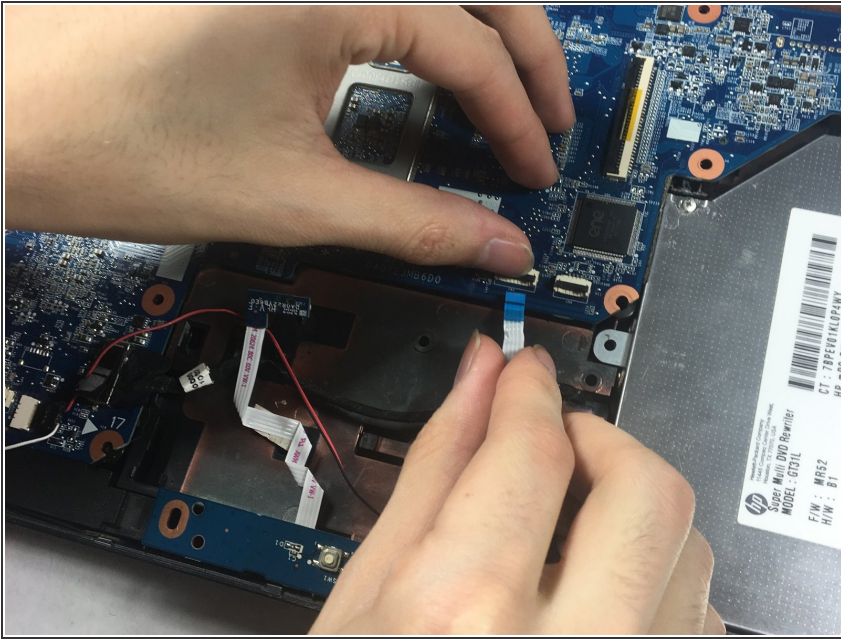
- Slowly pry off the keyboard from the back panel.
- ⓘ Between the back panel and the keyboard there are two ribbon wires.
- ⚠ Remove slowly to not break the back panel. If it does not come off easily, check to see if all screws are removed.

Step 10



- Unplug wires connecting back panel to keyboard.

Step 11 — Trackpad



- ❗ Actual trackpad does not come out since it is a part of the whole keyboard.
- Locate loosely attached blue strip at the bottom of the computer.
- Locate the left ribbon strip attached to small black and white box.
- Flip up the black tab while pulling out the ribbon.

To reassemble your device, follow these instructions in reverse order.