



# HP Pavilion g6-1b79dx Hard Drive Replacement

Replacing the hard drive inside your laptop

Written By: patrickhall



---

## INTRODUCTION

This is a guide to locate and remove the laptop's hard drive.



### TOOLS:

- [Phillips #00 Screwdriver](#) (1)
-

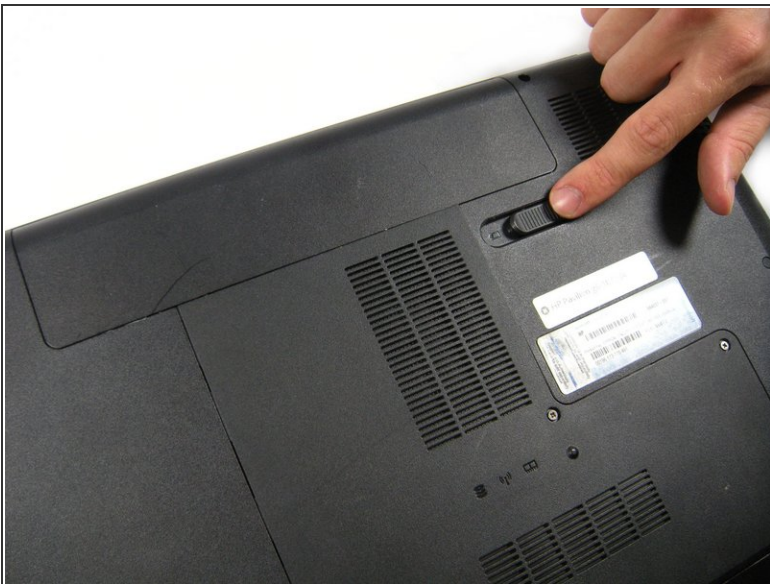


## Step 1 — Battery



- Flip the computer so the bottom is facing up with the battery away from you.
- ⚠ Turn off the computer and disconnect the charger.

## Step 2



- Slide the battery switch to the left until the battery unlatches from the base of the laptop.

### Step 3



- Lift the battery from its compartment away from the laptop.

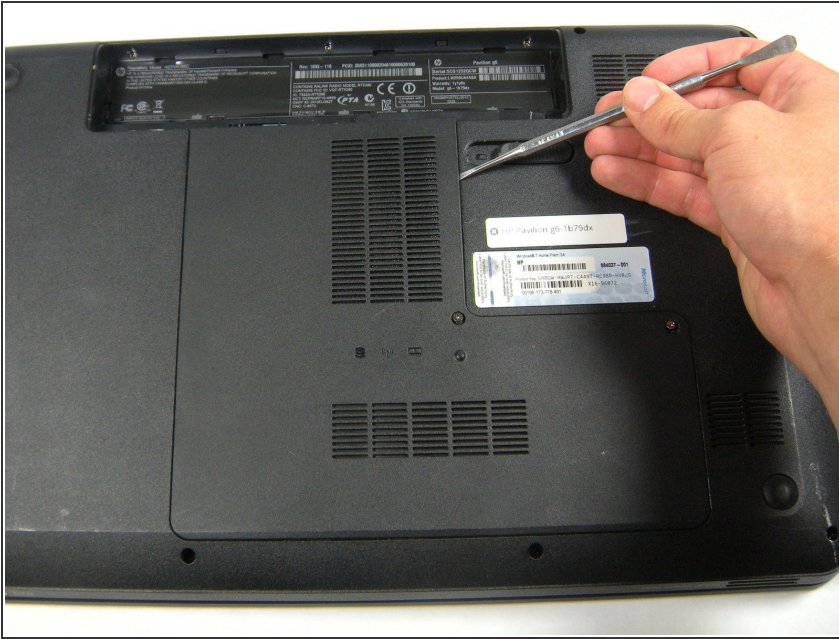
### Step 4 — Bottom Panel



- Loosen the two 5.7 mm screws on the bottom panel using a PH00 screwdriver.
- ⚠ The screws do not come out of the panel due to small washers. Do not try to remove the screws completely.



## Step 5



- Use the metal spudger all around the panel to pop it up from the base.

⚠ When working with electronics, it's important to choose a tool that's ESD-safe to avoid accidental damage to the device. The regular black nylon spudger or a plastic opening tool should be used whenever possible.

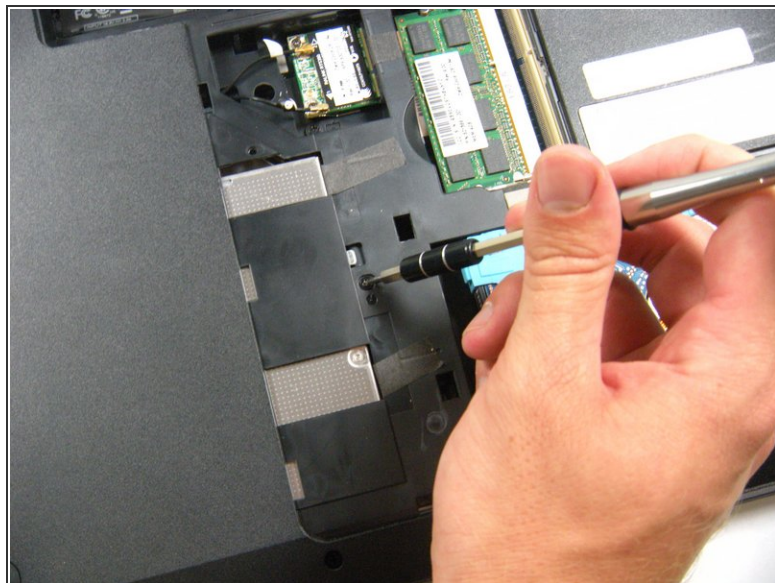
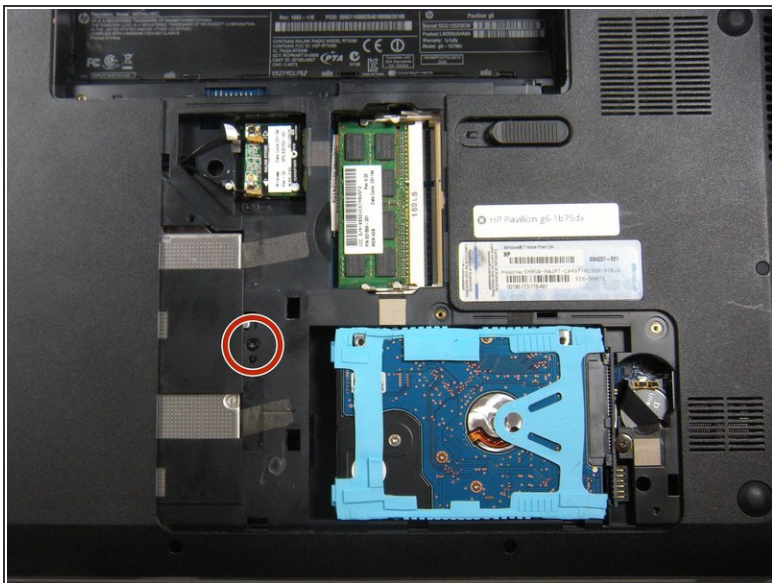
ⓘ Using your finger is acceptable but not entirely recommended. Be gentle if you choose to use your hands.

## Step 6



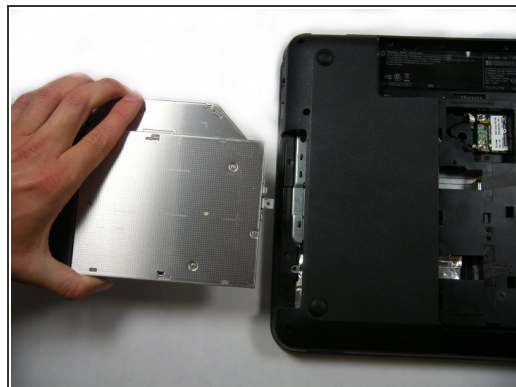
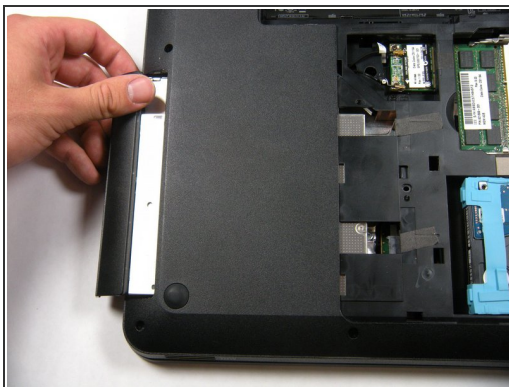
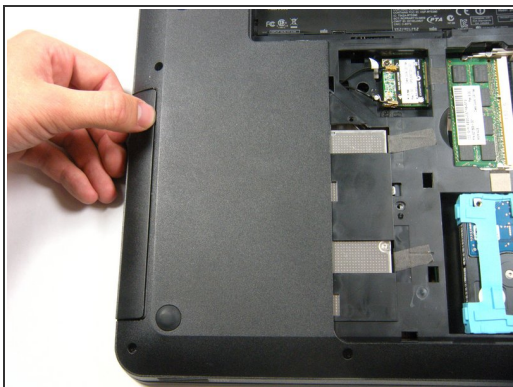
- With your hands, lift the panel completely off the base of the laptop.

## Step 7 — CD Drive



- Using the PH 00 screwdriver, remove the screw left of the CD drive.

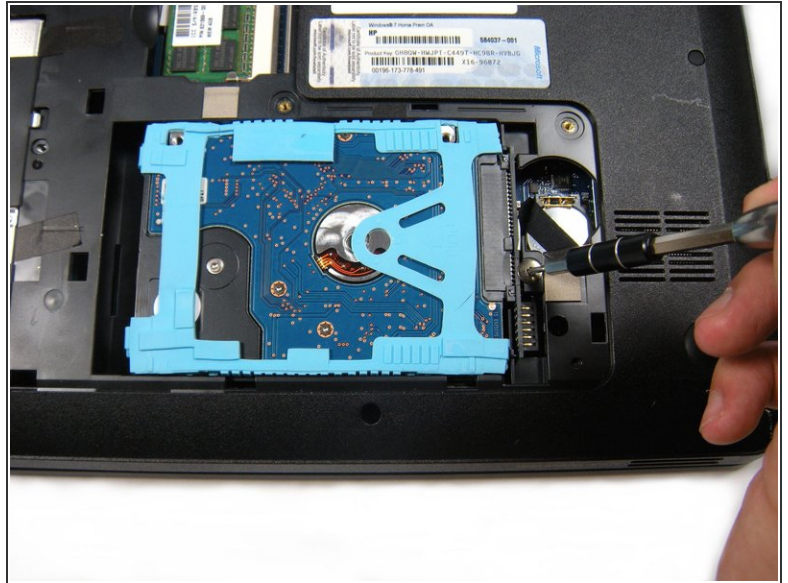
## Step 8



- Slide the CD drive out from the exterior of the laptop.

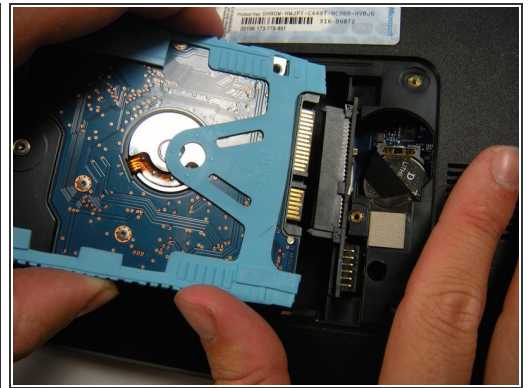
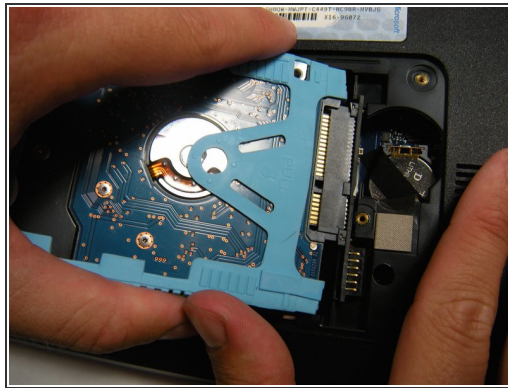


## Step 9 — Hard Drive



- Use the PH 00 screwdriver to unscrew the 2.5 mm screw to the right of the hard drive.

## Step 10



- Pull the triangular blue tab to disconnect and remove the hard drive. You can see the word 'Pull' on the cover.

To reassemble your device, follow these instructions in reverse order.