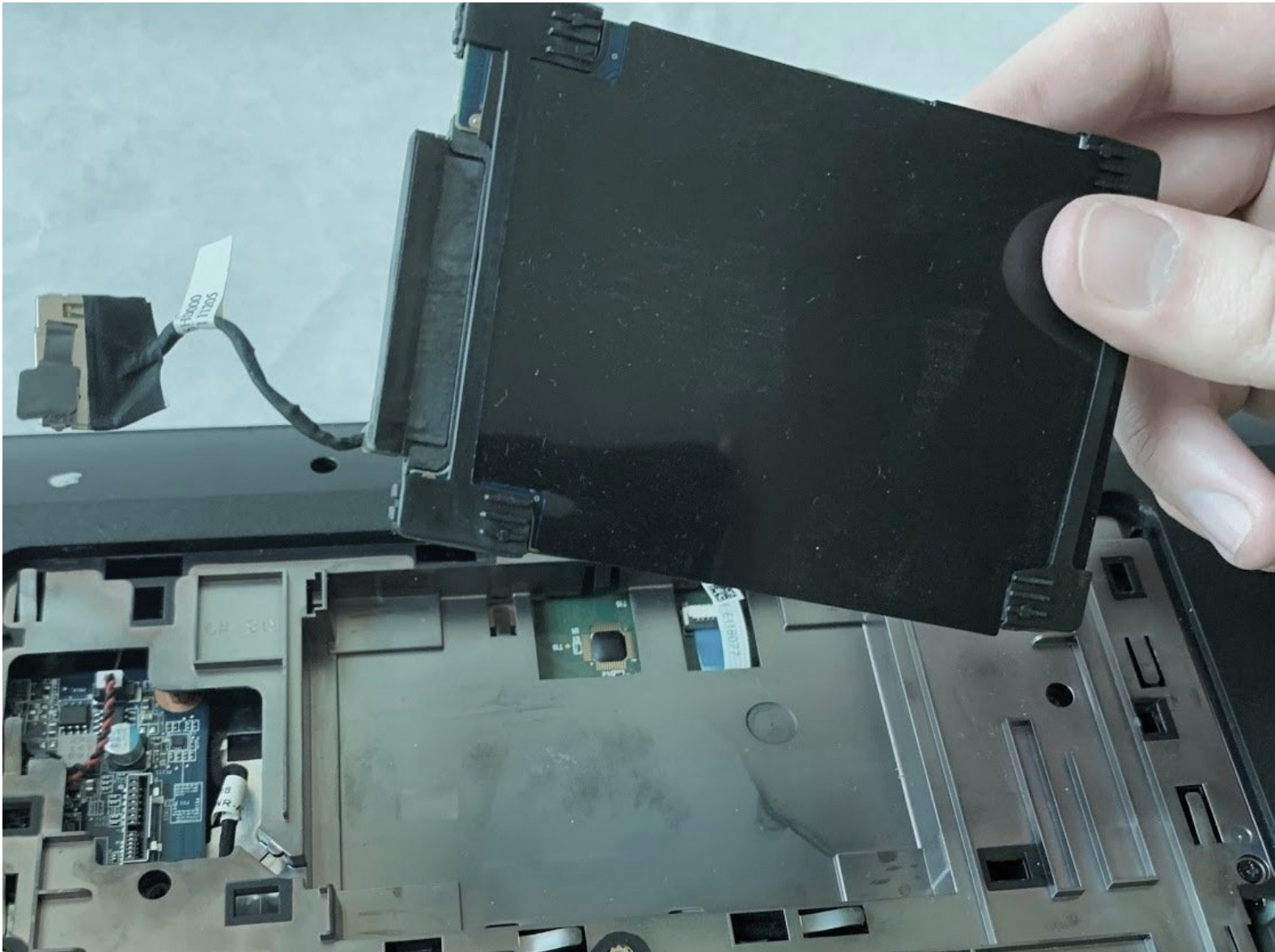




# HP Pavilion g7-1365dx Hard Drive Replacement

How to remove or replace hard drive in an HP Pavilion g7-1365dx.

Written By: Derrick Manu



## INTRODUCTION

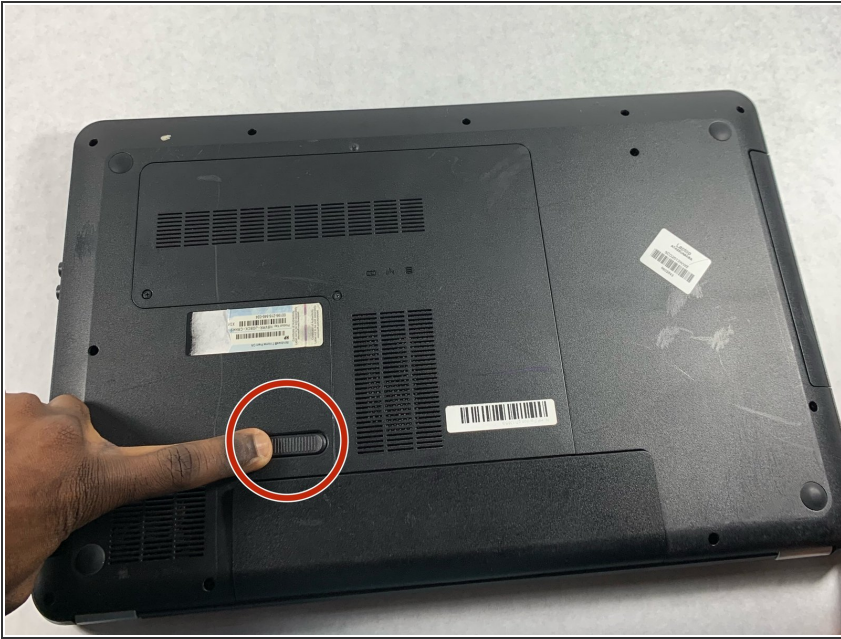
This guide will provide instructions on how to remove and replace a hard drive in an HP Pavilion g7-1365dx. Use this guide when having issues with a hard drive that is faulty.

---

### TOOLS:

- [Phillips #0 Screwdriver](#) (1)
  - [iFixit Opening Tools](#) (1)
-

## Step 1 — Battery



- ⚠ To prevent injury, make sure the laptop is powered off before removing the battery.
- Flip the laptop so that it is upside down and opens away from you. This exposes the battery, it will be centered at the bottom of the laptop .
- Push the switch above the battery towards the center of the laptop .

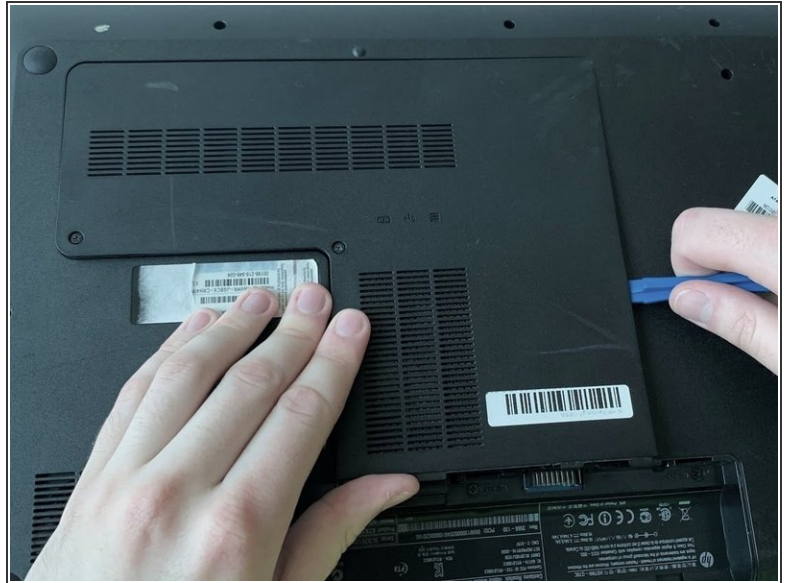
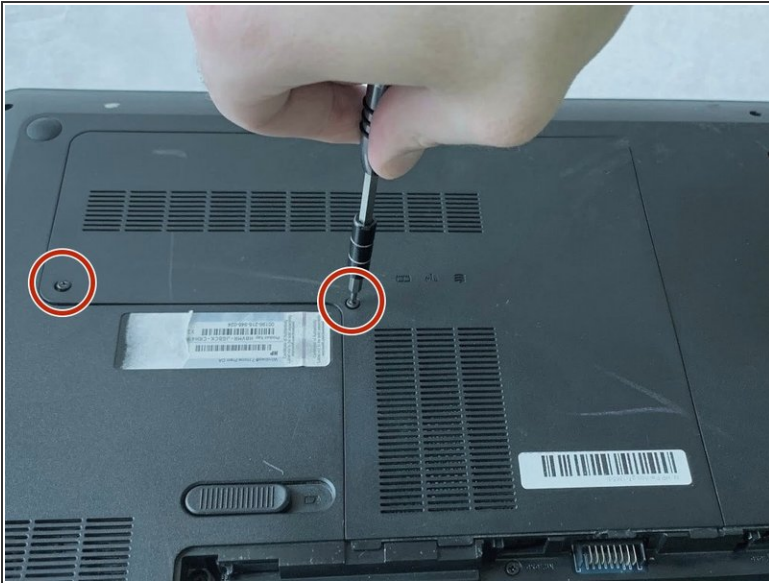
## Step 2



- While pushing the switch, lift the battery by the side closest to the switch up and away from the laptop.

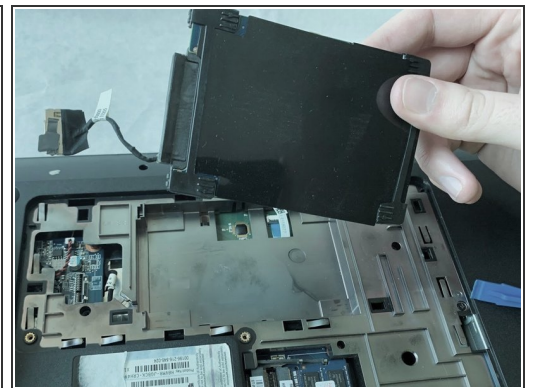
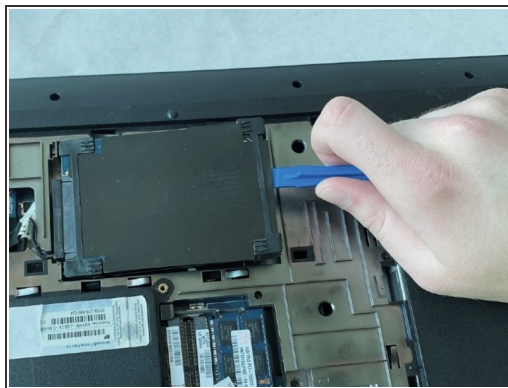


### Step 3 — Service Door



- Using a Phillips size 0 screwdriver, unscrew the 2 Phillips screws.
- Use the opening tool around the edges of the service door to loosen it and remove it.

### Step 4 — Hard Drive



- Disconnect the drive connector cable from the system board by pulling the plastic tab on top of the connector.
- Use the opening tool to lift the hard drive out.
- Remove the hard drive.

To reassemble your device, follow these instructions in reverse order.