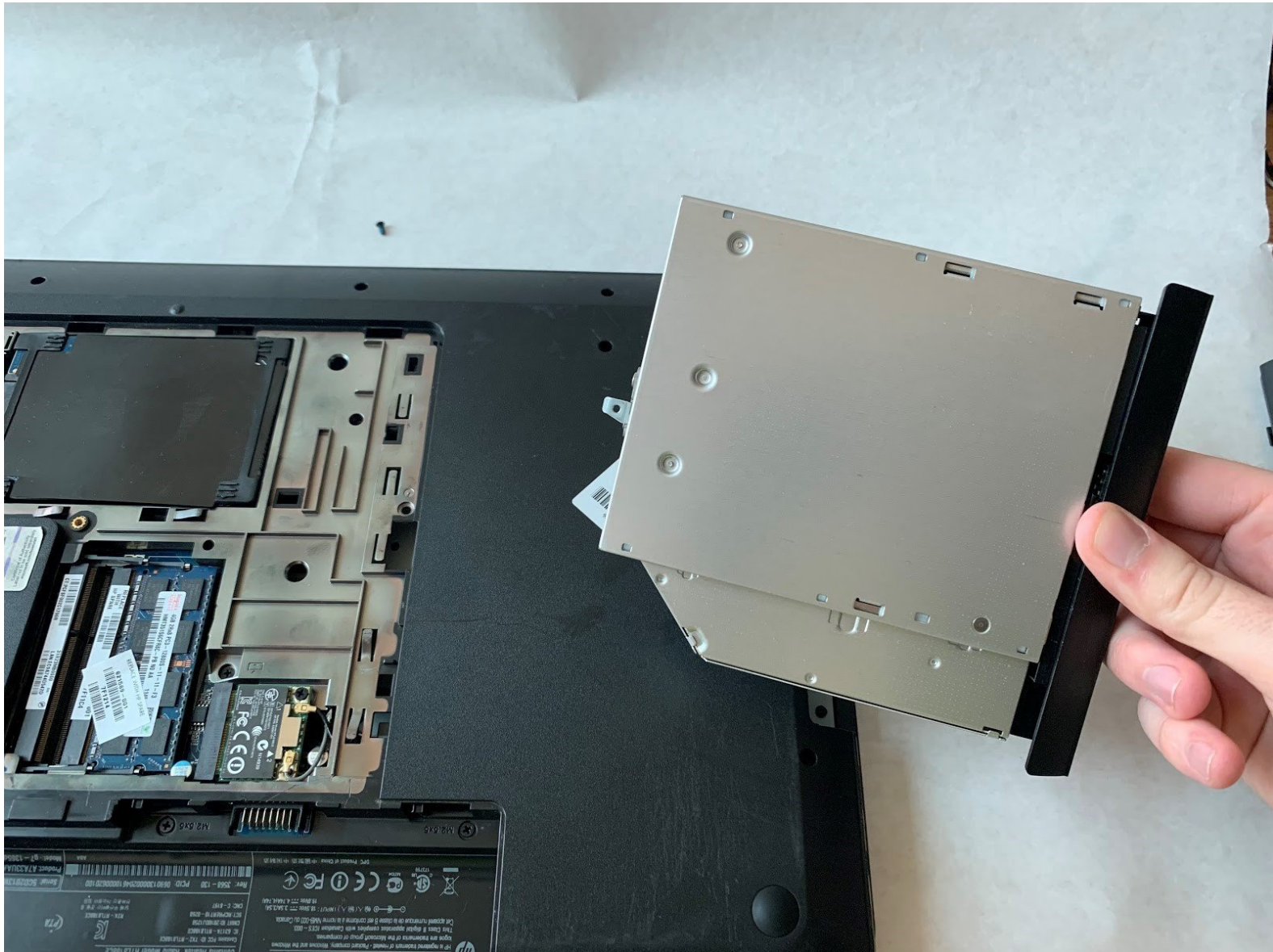




# HP Pavilion g7-1365dx Optical Drive Replacement

How to remove or replace an optical drive in an HP Pavilion g7-1365dx.

Written By: Colin Klaes



## INTRODUCTION

This guide will give step by step instructions on how to remove and replace an optical drive in an HP Pavilion g7-1365dx. Use this guide if you're having issues with an optical drive that is faulty. This guide can also be used as a prerequisite guide for more involved replacements.



### TOOLS:

- [Phillips #0 Screwdriver](#) (1)
  - [Phillips #00 Screwdriver](#) (1)
  - [iFixit Opening Tools](#) (1)
-

## Step 1 — Battery



⚠ To prevent injury, make sure the laptop is powered off before removing the battery.

- Flip the laptop so that it is upside down and opens away from you. This exposes the battery, it will be centered at the bottom of the laptop .
- Push the switch above the battery towards the center of the laptop .

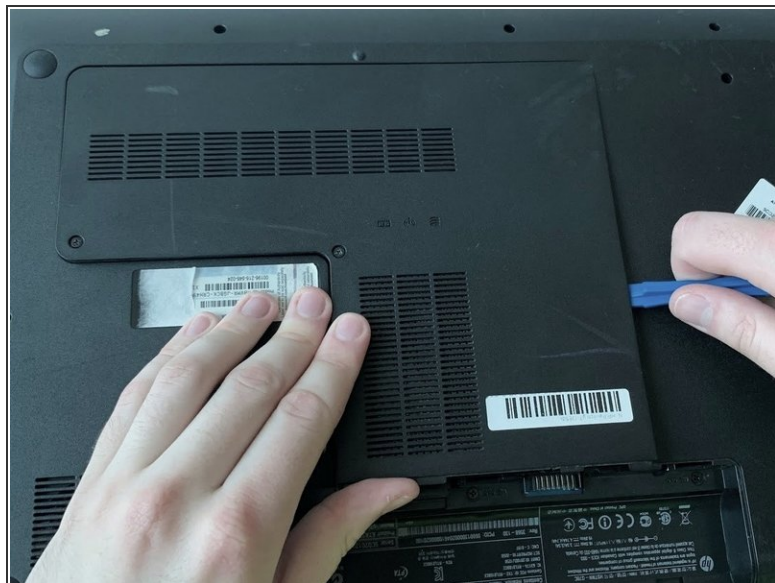
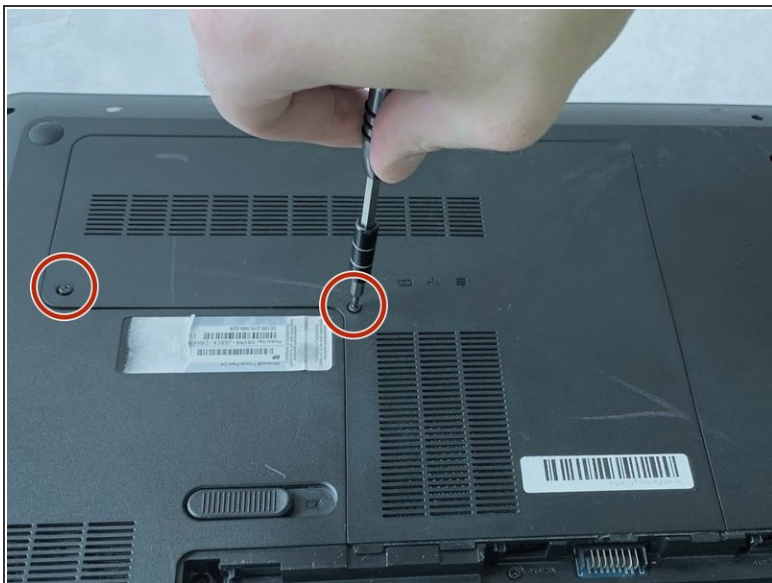
## Step 2



- While pushing the switch, lift the battery by the side closest to the switch up and away from the laptop.

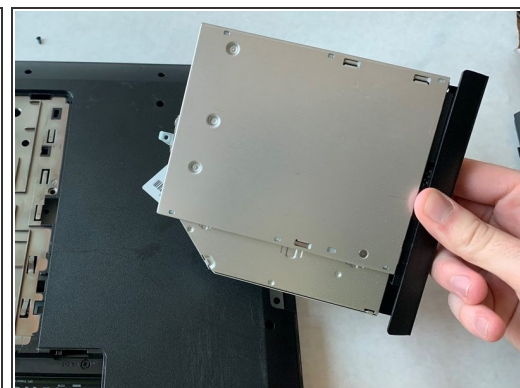
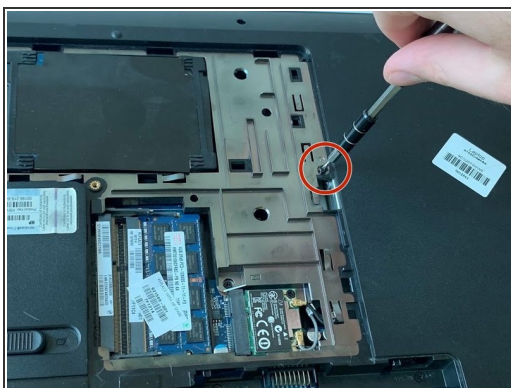


### Step 3 — Service Door



- Using a Phillips size 0 screwdriver, unscrew the 2 Phillips screws.
- Use the opening tool around the edges of the service door to loosen it and remove it.

### Step 4 — Optical Drive



- Using the Phillips size 00 screwdriver, unscrew the 4.7 mm screw that holds the optical drive.
- Use the opening tool to slide the drive out the side of the laptop to remove it.

To reassemble your device, follow these instructions in reverse order.