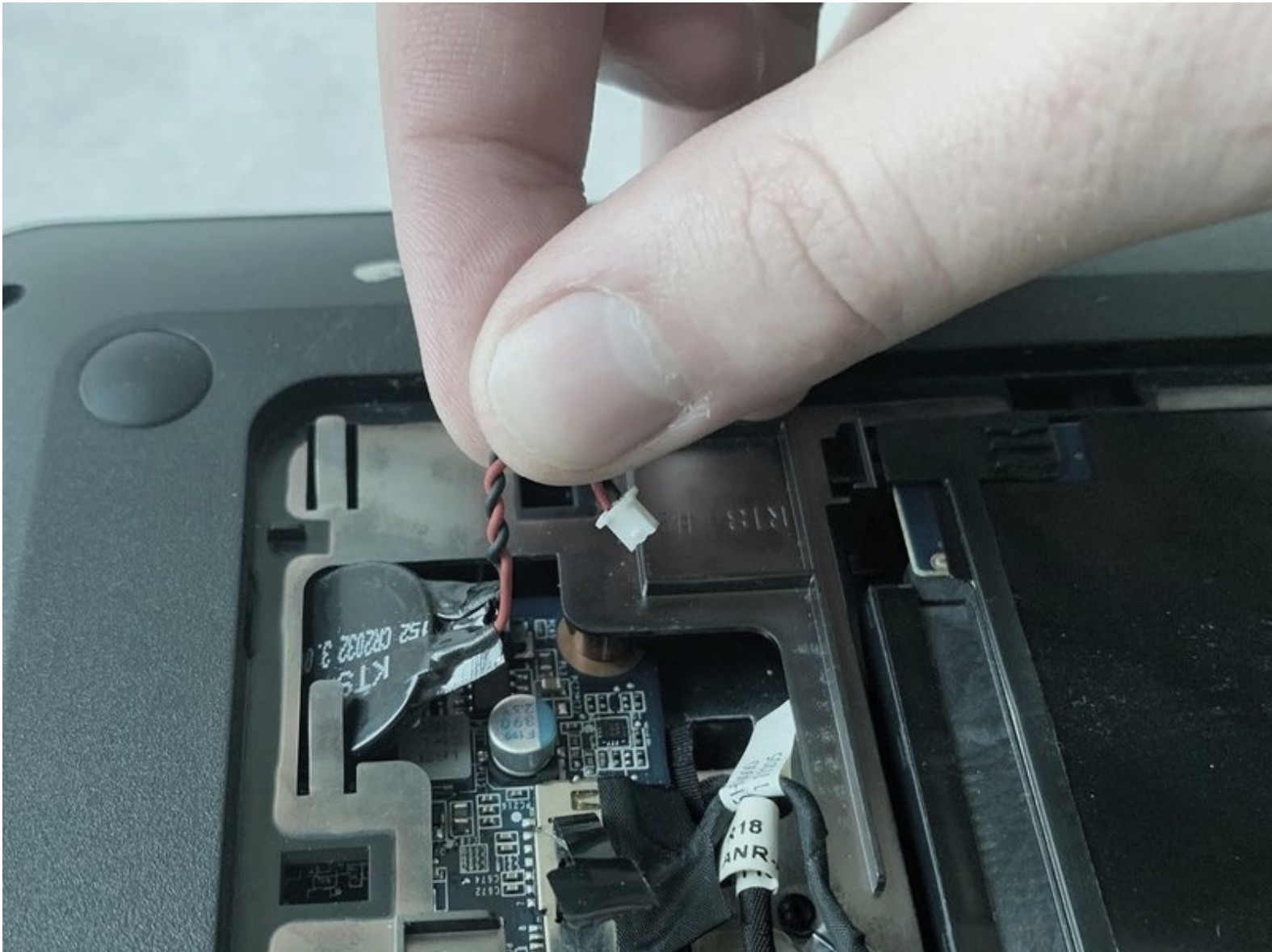




# HP Pavilion g7-1365dx RTC Battery Replacement

How to remove or replace an RTC Battery in an HP Pavilion g7-1365dx.

Written By: Derrick Manu



---

## INTRODUCTION

This guide will give step by step instructions on how to remove and replace an RTC Battery in an HP Pavilion g7-1365dx. Use this guide if you're having issues with an optical drive that is faulty.

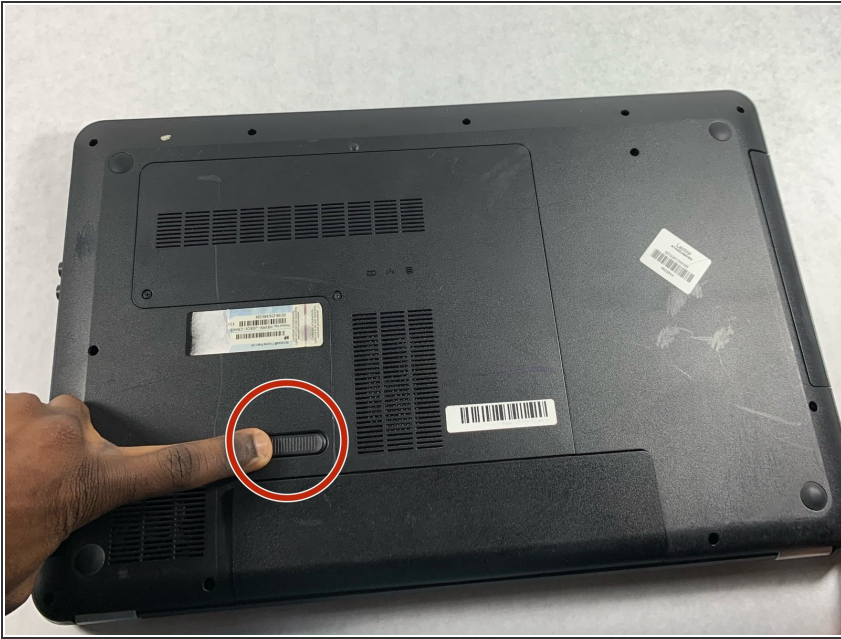
---



### TOOLS:

- [Phillips #0 Screwdriver](#) (1)
  - [iFixit Opening Tools](#) (1)
-

## Step 1 — Battery



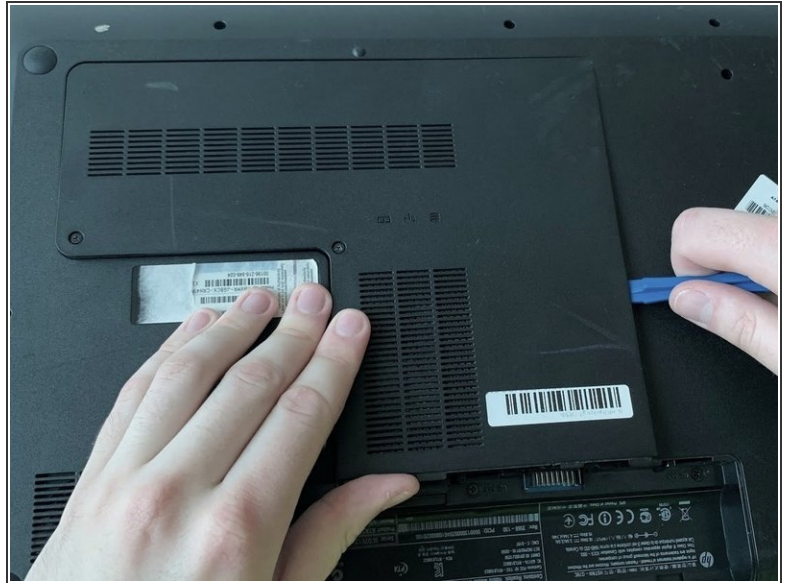
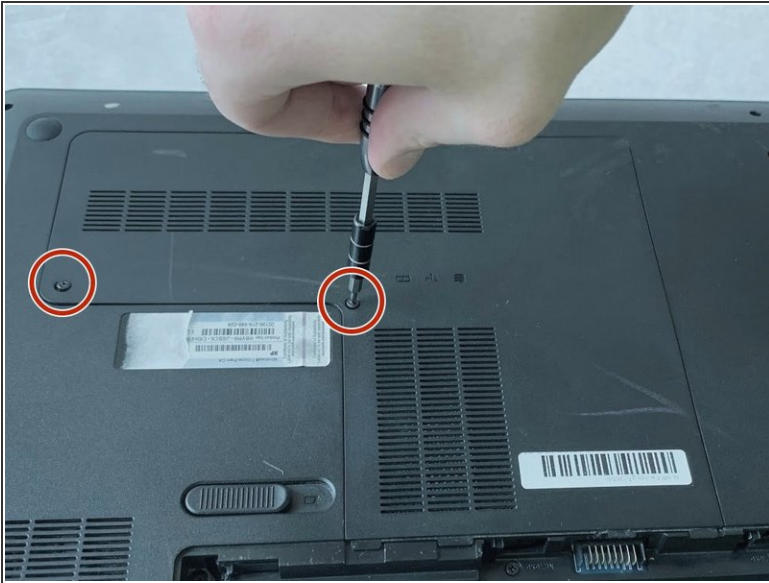
- ⚠ To prevent injury, make sure the laptop is powered off before removing the battery.
- Flip the laptop so that it is upside down and opens away from you. This exposes the battery, it will be centered at the bottom of the laptop .
- Push the switch above the battery towards the center of the laptop .

## Step 2



- While pushing the switch, lift the battery by the side closest to the switch up and away from the laptop.

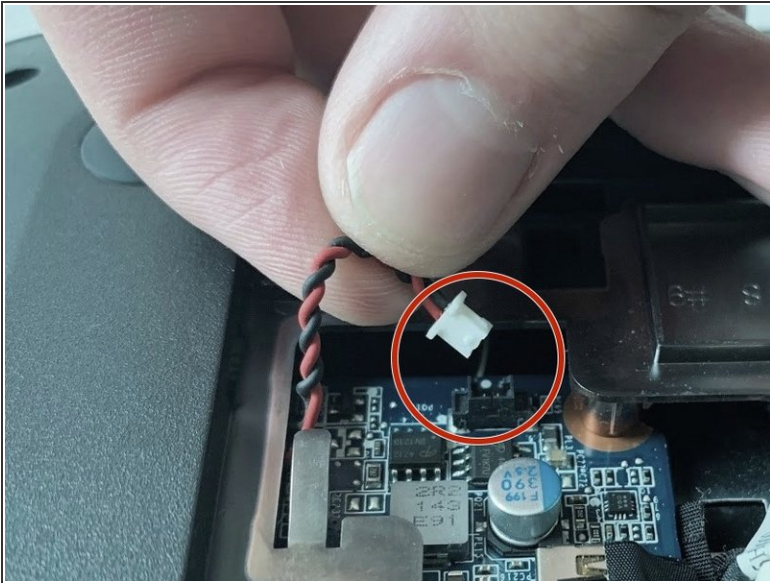
## Step 3 — Service Door



- Using a Phillips size 0 screwdriver, unscrew the 2 Phillips screws.
- Use the opening tool around the edges of the service door to loosen it and remove it.



## Step 4 — RTC Battery



- Disconnect the RTC battery power cable from the system board.
- Remove the RTC battery from the system board. (The RTC battery is attached to the system board with double-sided tape.)
- Slide the RTC battery out from under the surface of the base enclosure.

To reassemble your device, follow these instructions in reverse order.