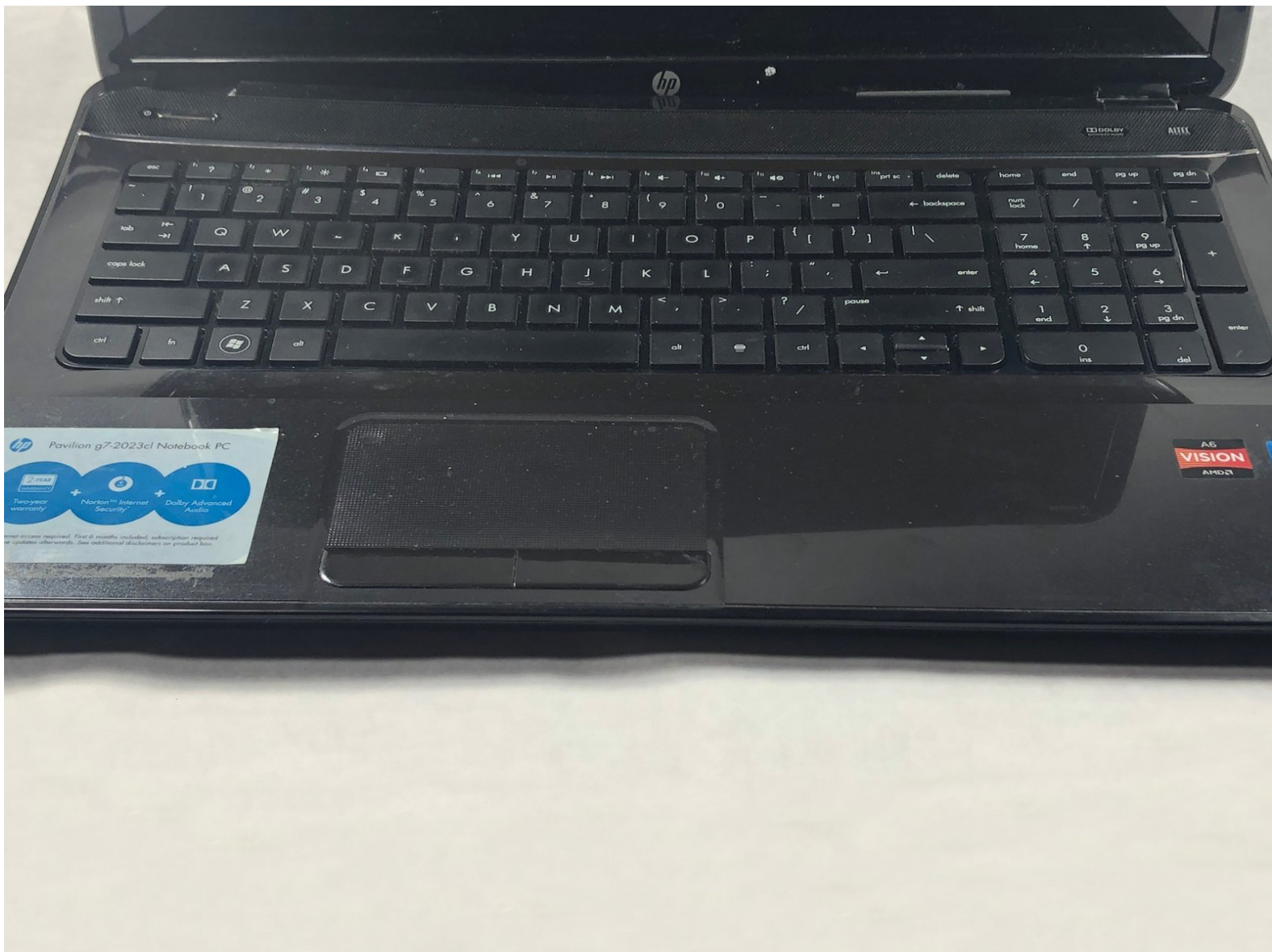




# HP Pavilion g7-2023cl Keyboard Replacement

This guide will show you how to replace the HP Pavilion g7-2023cl Keyboard.

Written By: Thomas Maloney



## INTRODUCTION

There are a few reasons to replace the keyboard. The keyboard is missing keys, a few keys do not work anymore, or the entire keyboard is broken. Whatever the reason, this guide will show you how to replace the keyboard.



### TOOLS:

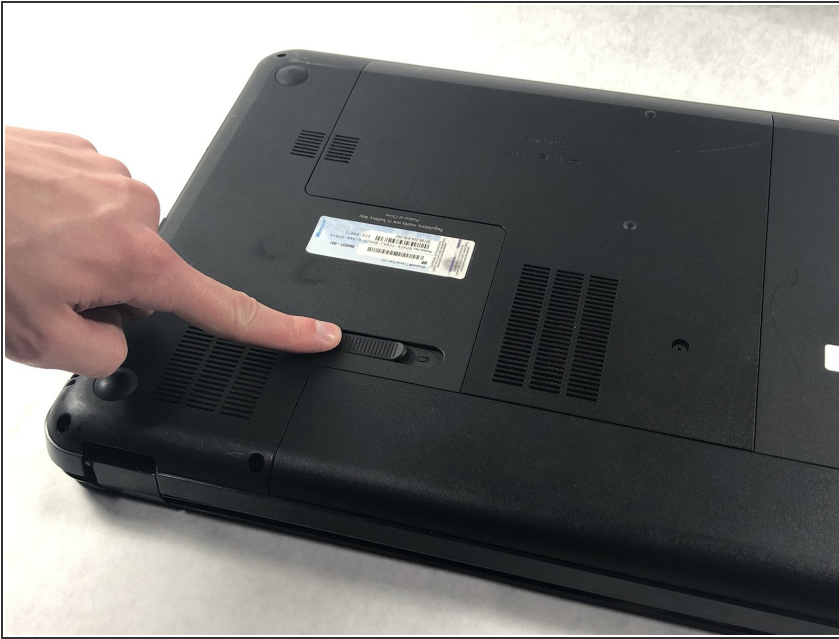
- [Phillips #0 Screwdriver](#) (1)
- [Spudger](#) (1)
- [iFixit Opening Tools](#) (1)





### PARTS:

- [HP Pavilion g7-2023cl Keyboard](#) (1)

## Step 1 — Battery




 Shut off your device and disconnect the power cord. Disconnect any external devices connected to the device.

- Place your finger on the battery lock slider, press toward the center of the laptop to unlock the battery.
-  The lock will make a click sound letting you know that the battery is unlocked.

## Step 2



- Use your thumb to pry up the edge of the battery and lift it out of the device.
-  When replacing the battery, align the notch on the battery with the battery lock on the device. Gently press down on the battery until you hear the lock click, which signals that the battery is secure.



## Step 3 — Service Door



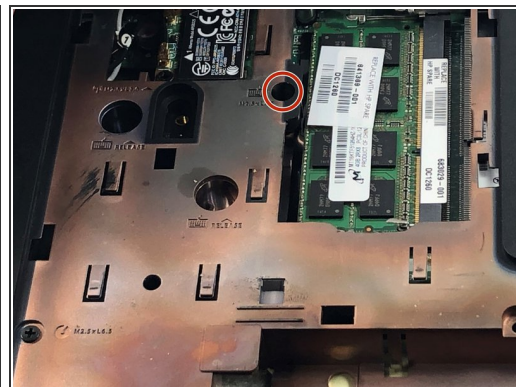
- Using a Phillips #0 screwdriver, loosen the service door screw.
- ⓘ This is a captive screw that will remain attached to the service door.

## Step 4



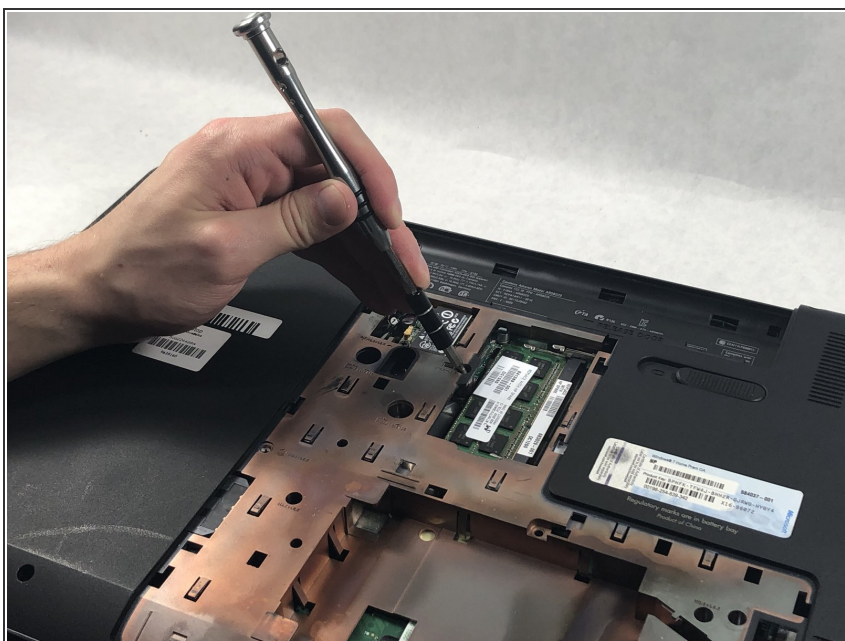
- Lift the service door up and away from the device.

## Step 5 — Keyboard



- Locate the screw that secures the keyboard.
  - ❗ It is near the RAM module and the screw hole is identified by a keyboard symbol with the text underneath it that reads M2.5×6.5.

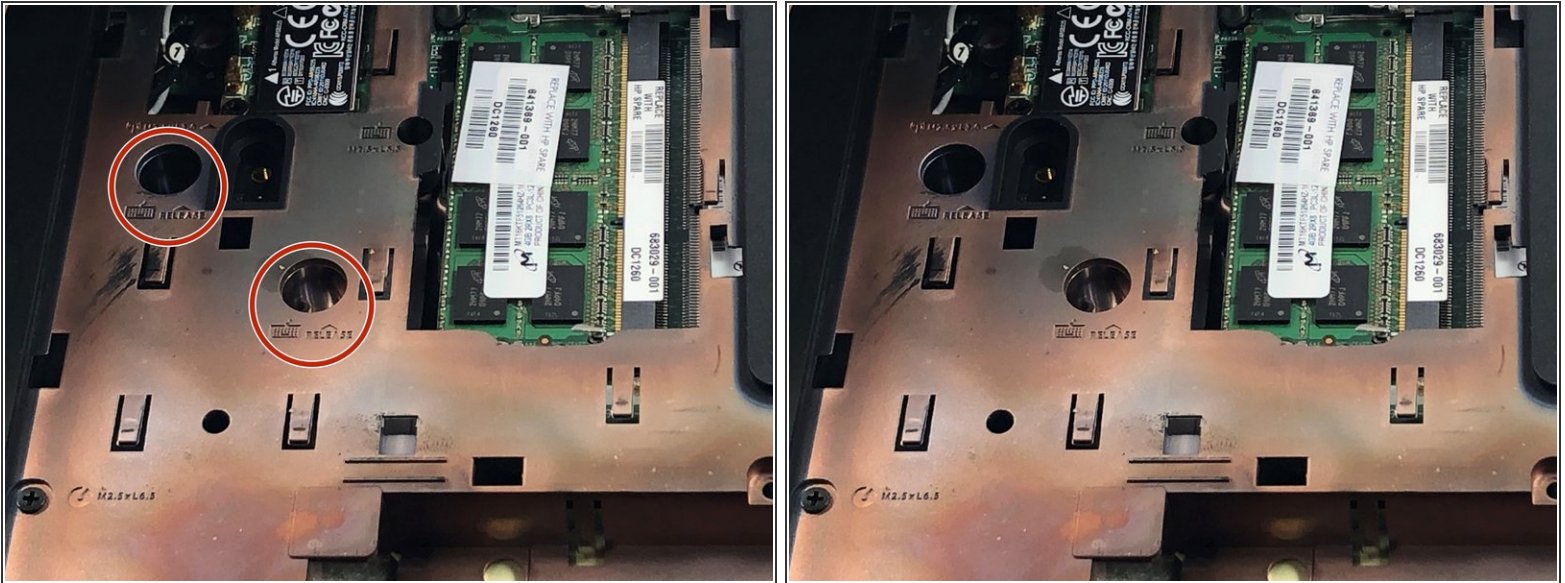
## Step 6



- Using a Phillips #0 screwdriver, remove the Phillips M2.5×6.5 screw that secures the keyboard.

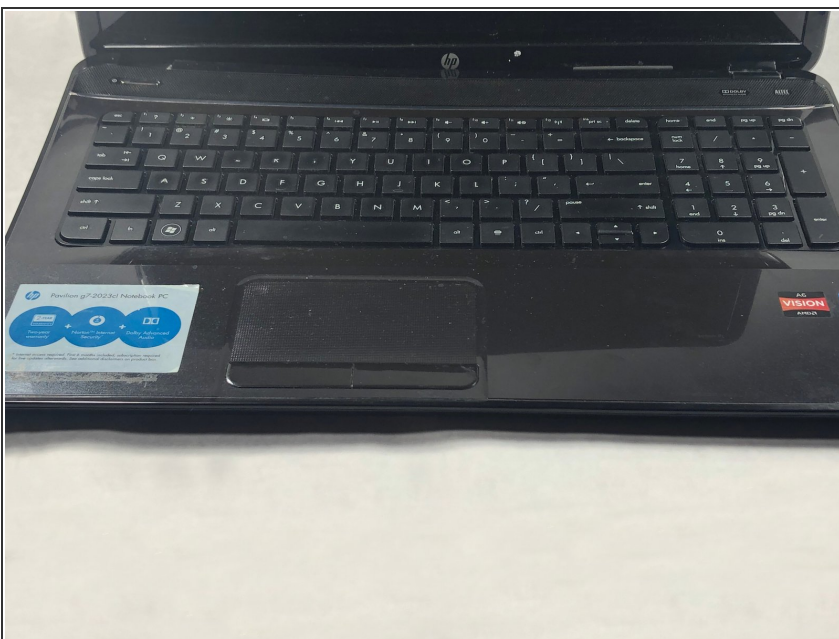


## Step 7



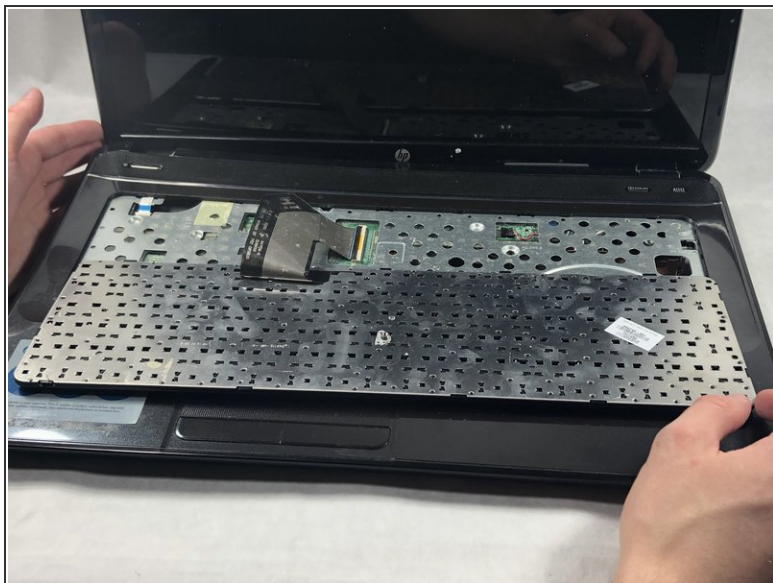
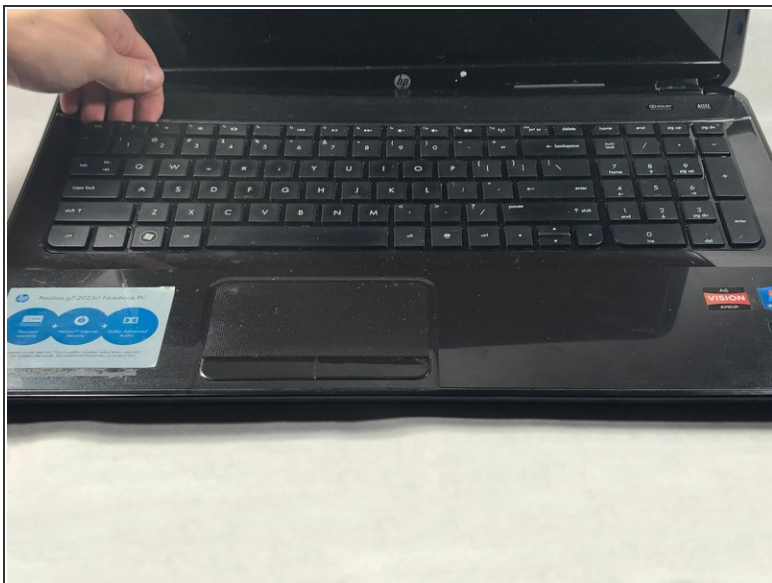
- Insert the pointy end of a spudger into the two keyboard release holes and press down to disengage the keyboard from the device.
- ⓘ The release holes are on the base enclosure identified by a keyboard symbol with the word "release" written next to it.

## Step 8



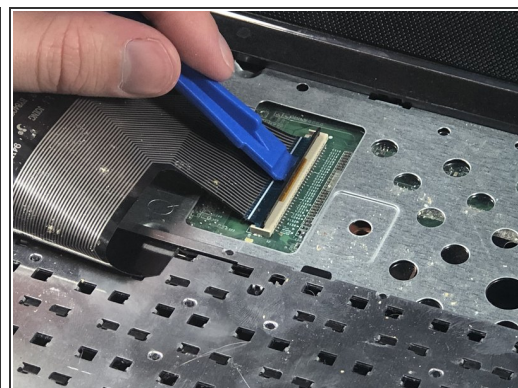
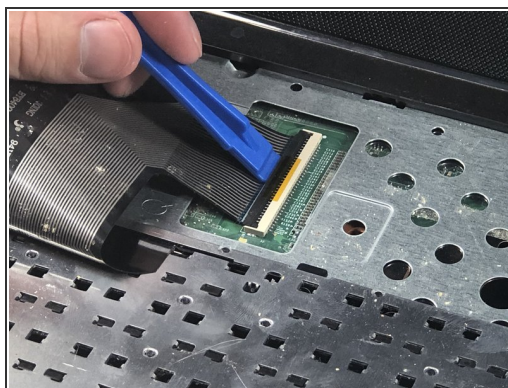
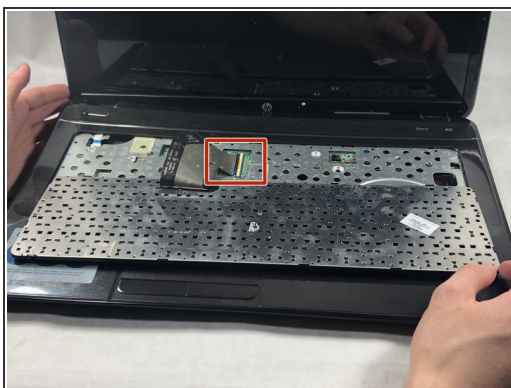
- Turn the device over and open the laptop.

## Step 9



- Use your fingers and grab the corner(s) of the keyboard and lift up towards the display panel.
- Fold the keyboard over key side down onto the top cover so that it lays flat on the track pad.

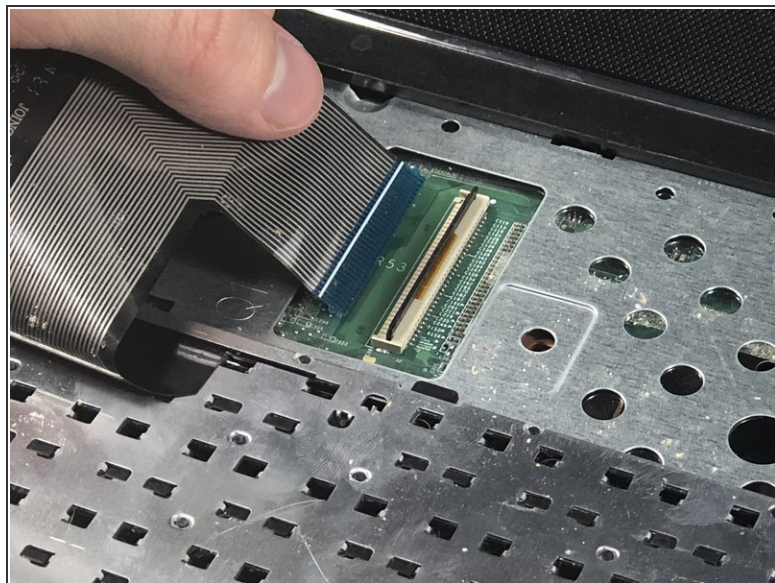
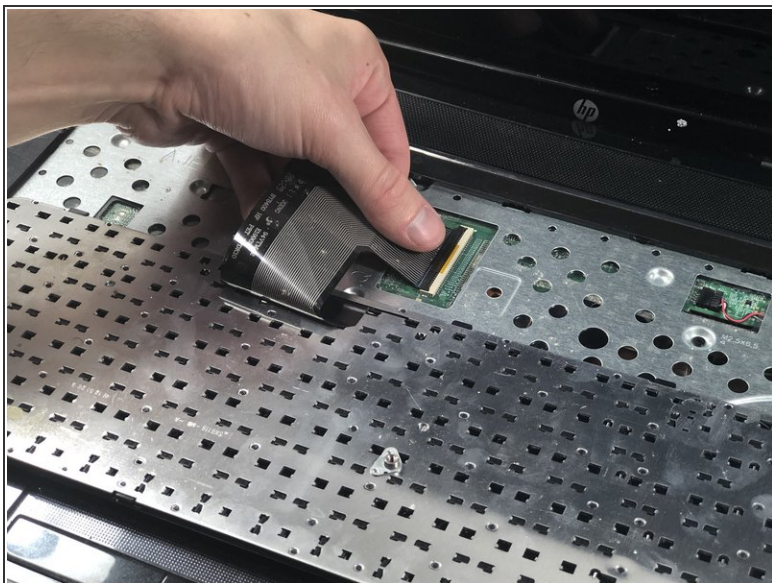
## Step 10



- Locate the keyboard cable connector.
- Using a plastic opening tool, flip up the locking tab on the Zero Insertion Force (ZIF) connector.



## Step 11



- Pull the keyboard ribbon cable out from the connector.

## Step 12



- Remove the keyboard from the device.

To reassemble your device, follow these instructions in reverse order.