



HP Pavilion g7-2275dx RAM Replacement

Replacing the RAM in your HP g7-2275.

Written By: John Sutton



INTRODUCTION

One of the easiest ways to speed up your computer is to add more RAM. This guide will walk you through how to replace the RAM in your laptop.

Be sure that you buy the right type of RAM. The g7-2275 dx supports two stick of RAM, up to 8 GB. It takes 204-pin SODIMM DDR3 PC3-10600 1333MHz RAM.

For more information about RAM, check out [iFixit's RAM page](#)




TOOLS:

- [Phillips #1 Screwdriver](#) (1)
 - [Anti-Static Wrist Strap](#) (1)
 - [iFixit Opening Tools](#) (1)
-

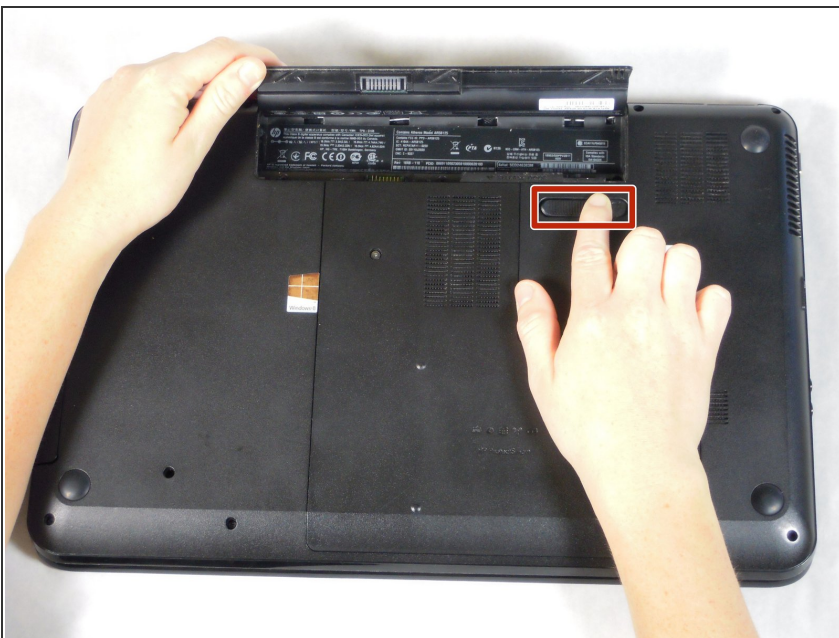
Step 1 — Battery



 Working on your device while it is turned on may result in electric shock. Make sure to shut down and unplug your device before you begin.

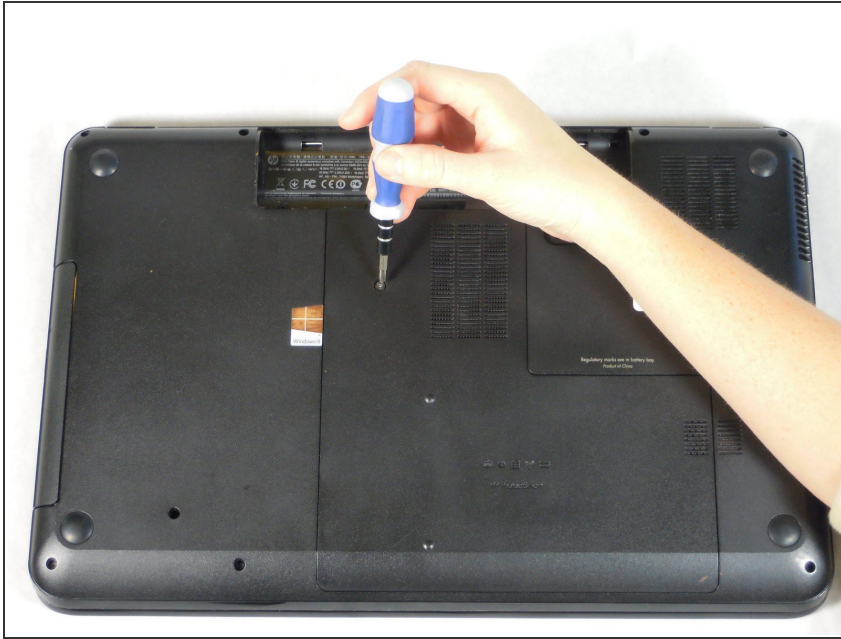
- Flip your device over so the bottom panel is facing up.

Step 2



- The battery is held in by a latch in the front and tabs in the back.
- Slide the lock switch left, towards the center of the computer.
- Lift up the battery, rotating it up and away from you, then pull it out.
- ☑ To put the battery back in, line it up with the battery bay and the holes for the tabs. Then let the battery rotate towards you and press down until the latch engages and you hear a click.

Step 3 — Disassembling HP Pavilion g7-2275dx Back Panel



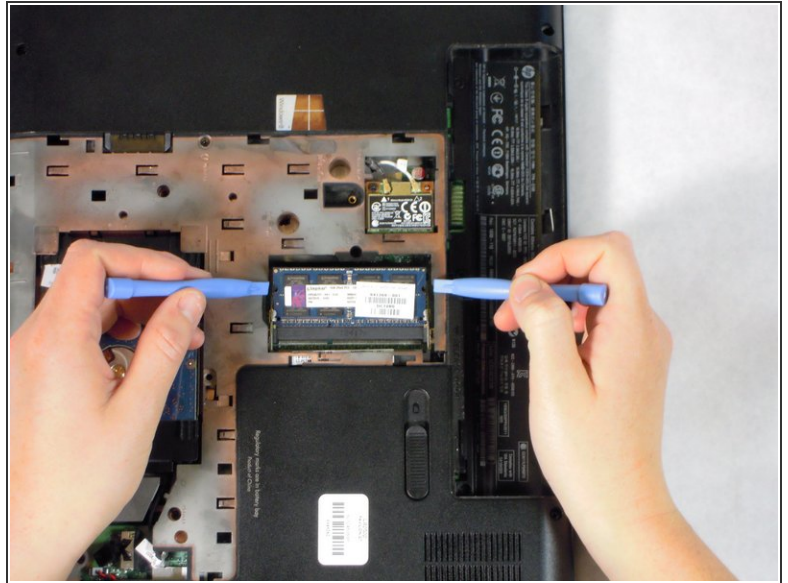
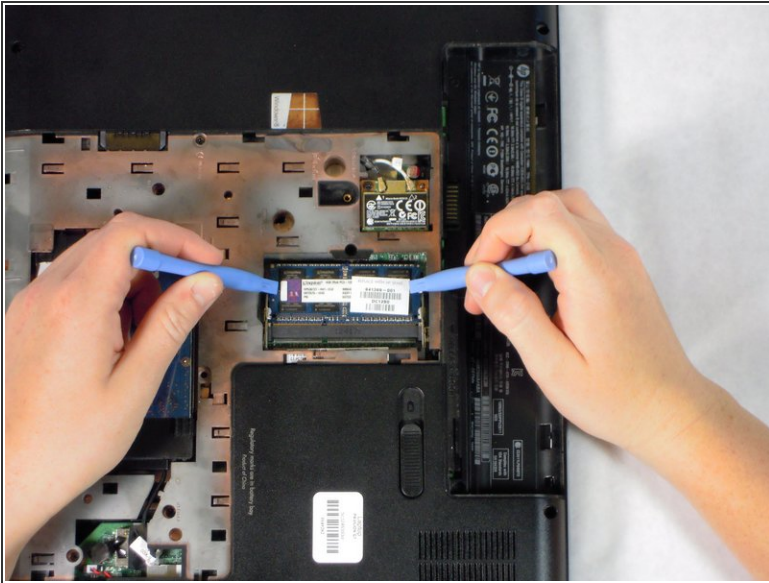
- Unscrew one Phillips #1 screw from the back panel.
- ⓘ The screw is on a spring and attached to the panel. It will pop up, but will not separate from the back panel.

Step 4



- Slide the back panel down and pull it up.

Step 5 — RAM



- Use your fingers, plastic opening tools, or pliers to pull the silver brackets away from the RAM.
- ⓘ The RAM should pop up to a 35 degree angle.

Step 6



- Gently pull the RAM straight out in the direction it currently is orientated.
- ✦ When inserting new RAM, place the RAM in the black housing at a 35 degree angle (it will fit loosely), then push down until it clicks into the silver brackets.
- ⓘ This computer supports two sticks of RAM. To add a second stick, repeat the above step with the upper black housing. (Ensure that you have the correct size and type of RAM before trying to add it).

To reassemble your device, follow these instructions in reverse order.