



HP Pavilion g7-2275dx Screen Replacement

Replacing the screen on your HP g7-2275dx.

Written By: John Sutton



INTRODUCTION


Is your screen flickering, unreadably dim, shattered, or have lots of little black dots? Replacing your screen may solve these problems.

TOOLS:

- [Tweezers](#) (1)
 - [Phillips #1 Screwdriver](#) (1)
 - [iFixit Opening Tools](#) (1)
-

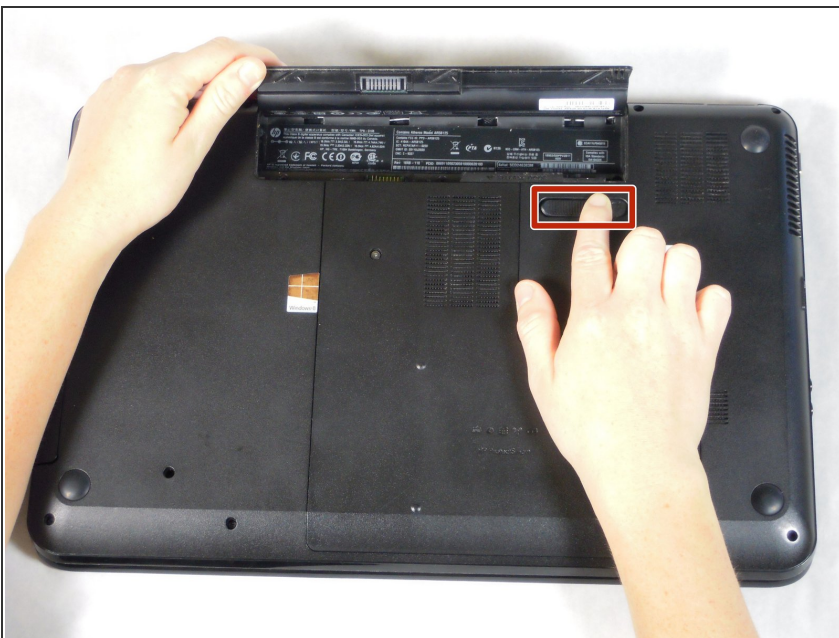
Step 1 — Battery



 Working on your device while it is turned on may result in electric shock. Make sure to shut down and unplug your device before you begin.

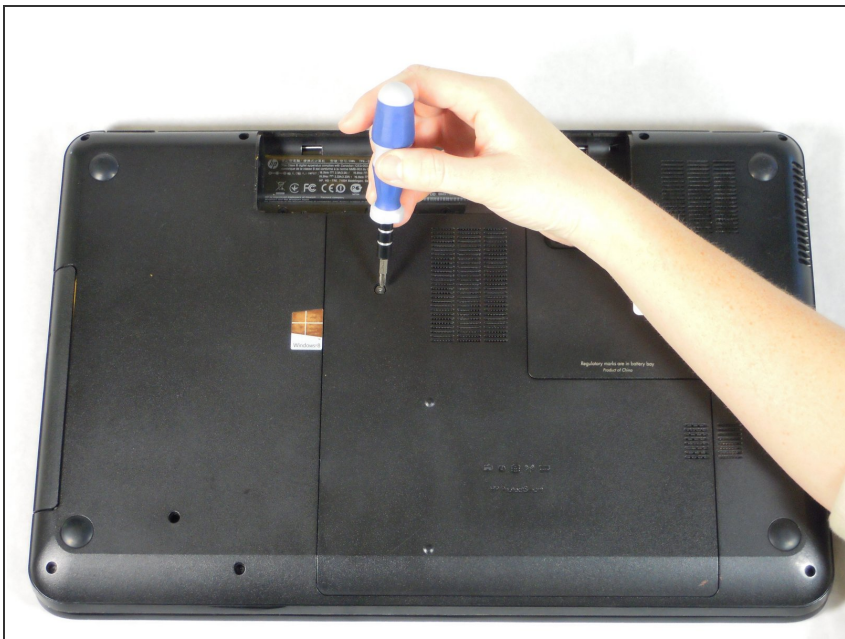
- Flip your device over so the bottom panel is facing up.

Step 2



- The battery is held in by a latch in the front and tabs in the back.
- Slide the lock switch left, towards the center of the computer.
- Lift up the battery, rotating it up and away from you, then pull it out.
- ☑ To put the battery back in, line it up with the battery bay and the holes for the tabs. Then let the battery rotate towards you and press down until the latch engages and you hear a click.

Step 3 — Disassembling HP Pavilion g7-2275dx Back Panel



- Unscrew one Phillips #1 screw from the back panel.
- ⓘ The screw is on a spring and attached to the panel. It will pop up, but will not separate from the back panel.

Step 4



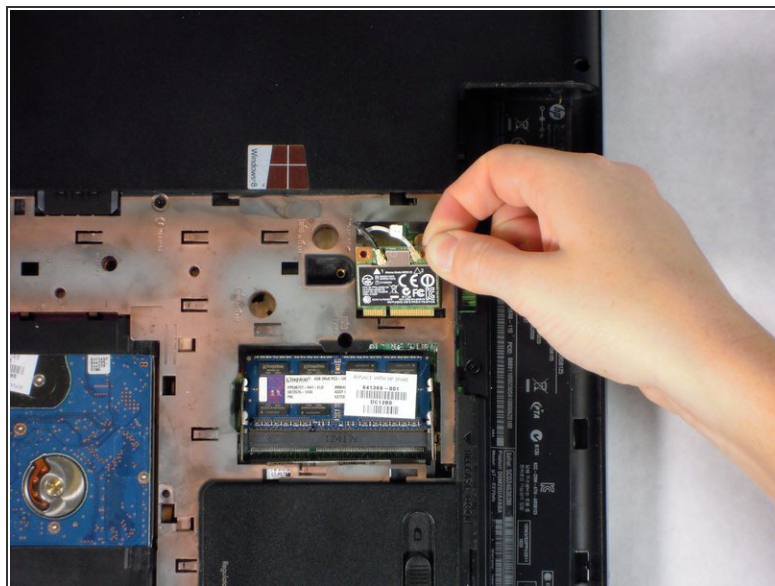
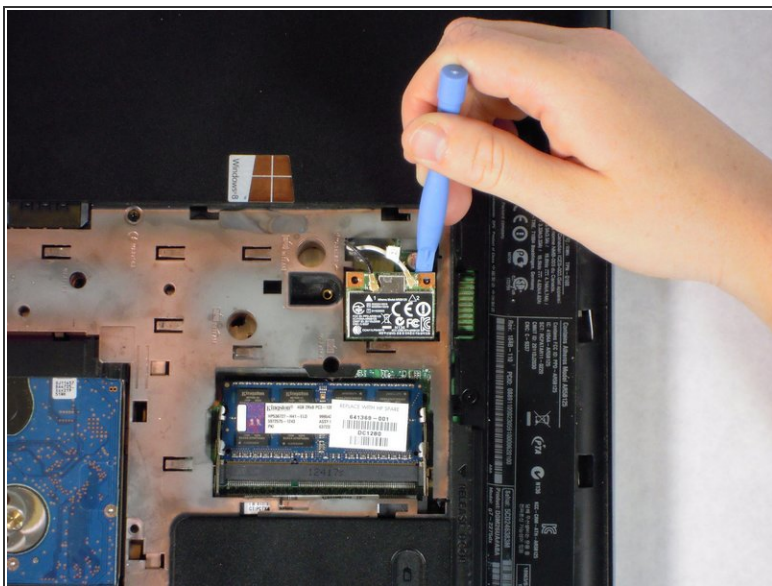
- Slide the back panel down and pull it up.

Step 5 — Wireless Card



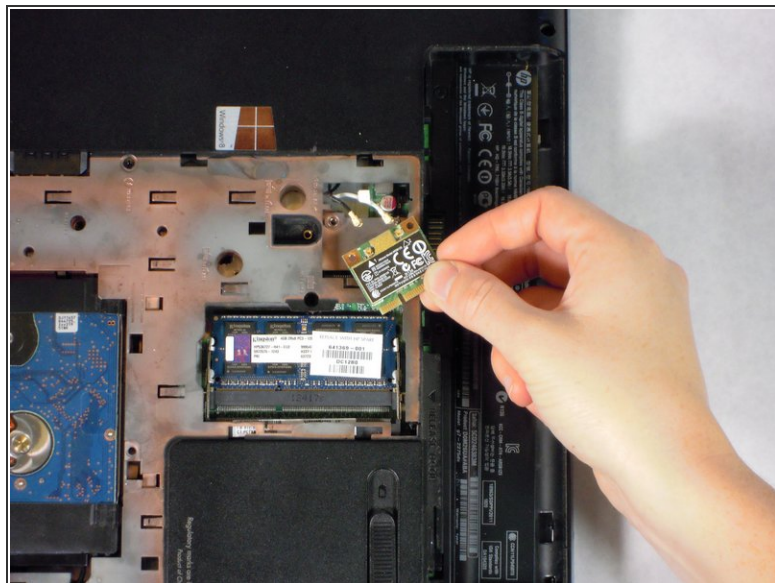
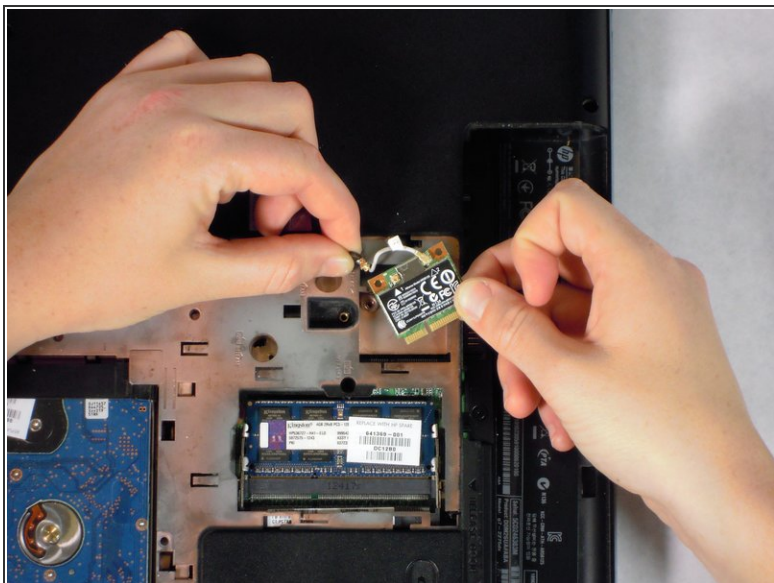
- Use a Phillips #1 screw driver to unscrew the black 4 mm Phillips #1 screw on the wireless card.

Step 6



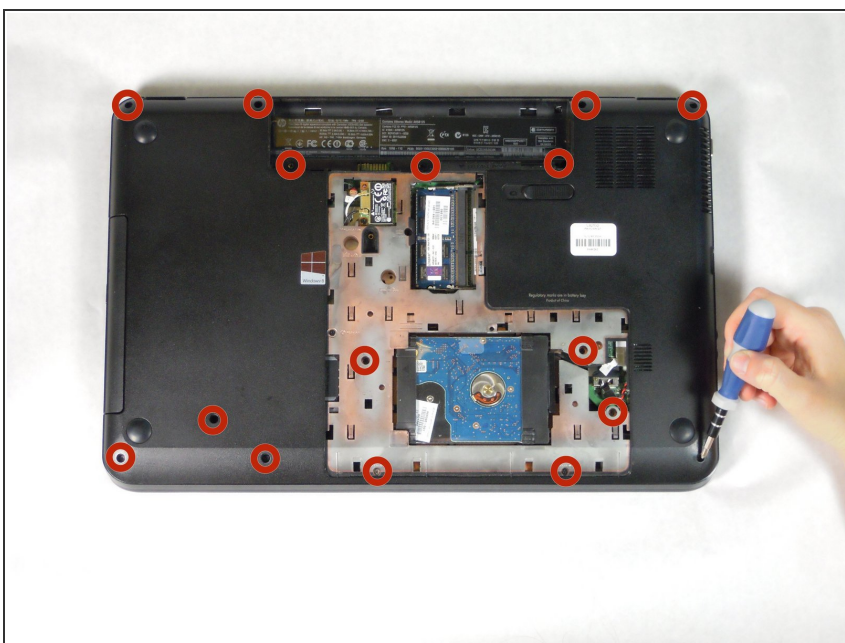
- Use a plastic opening tool to lift the wireless card out of its slot.

Step 7



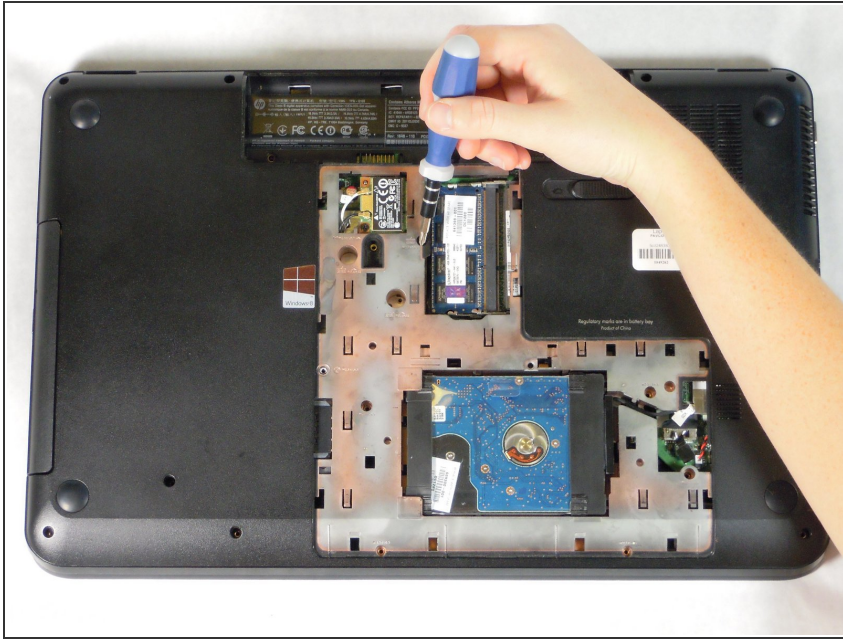
- Pull the black and white wires up and off of the wireless card.
- Remove the wireless card.

Step 8 — Back panel screws



- Remove sixteen 7 mm Phillips #1 screws.

Step 9 — Keyboard



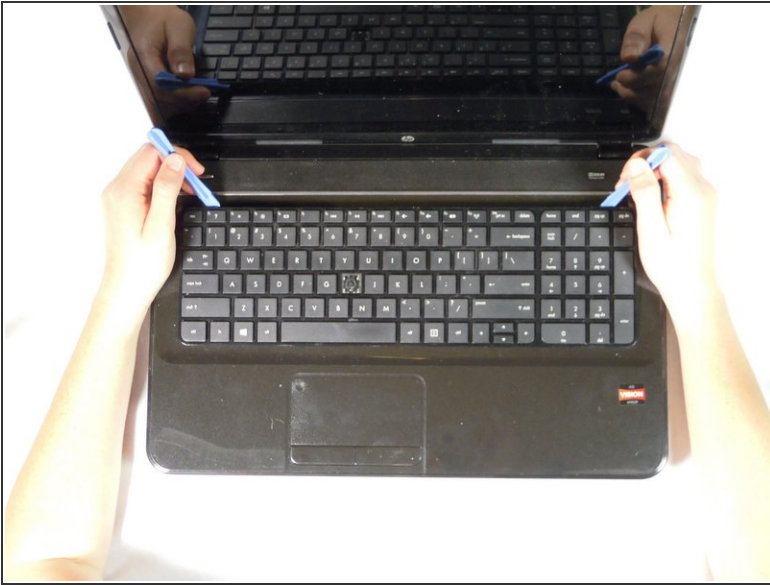
- Unscrew the 7 mm Phillips #1 screw next to the keyboard icon.

Step 10



- Flip the laptop over and open the screen.

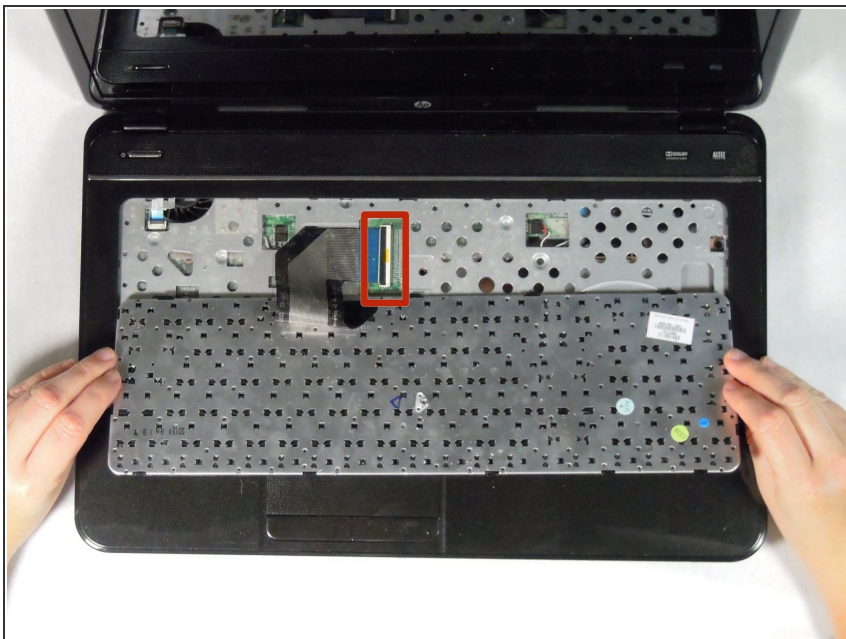
Step 11



! A ribbon cable is attached to the back of the keyboard. Avoid lifting or moving the keyboard more than a couple inches before you disconnect the ribbon cable or you may damage it.

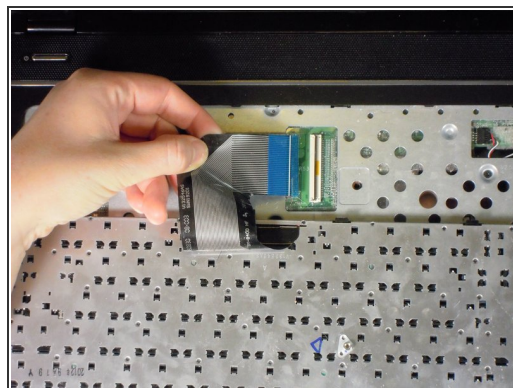
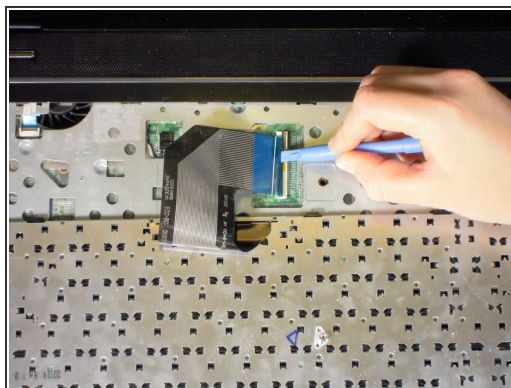
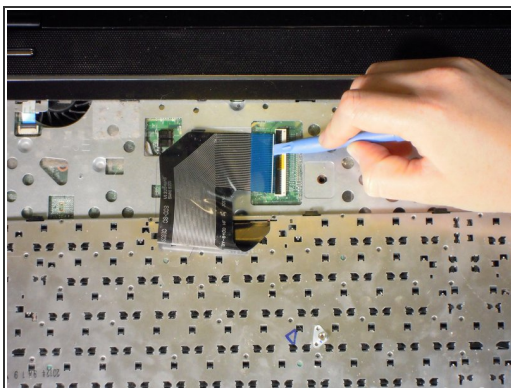
- Carefully pry up one of the top corners of the keyboard with a prying tool. Slide the tool along the top of the keyboard to release it from the housing. Pull the top of the keyboard towards you an inch or two.
- i** The keyboard may make some cracking noises as you pry it from the casing. This is expected.
- Pull the keyboard up and away from you, as it is held in by clips in the front. It is not yet disconnected.

Step 12



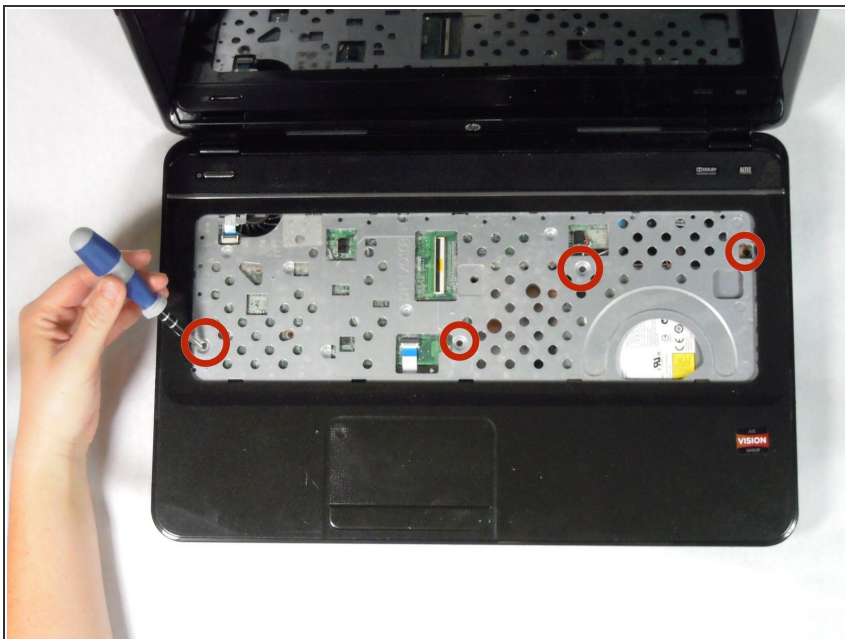
- Gently turn keyboard over, towards you, to reveal the silver cable ribbon.

Step 13



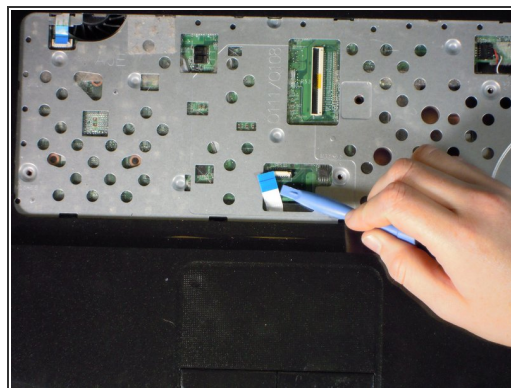
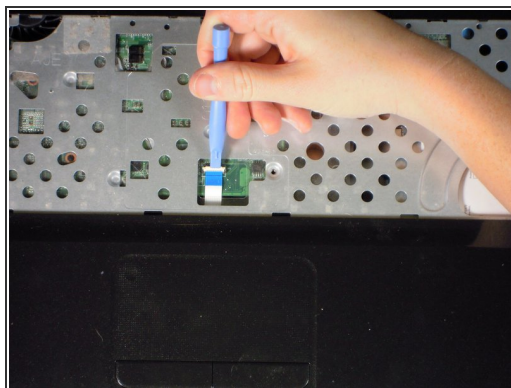
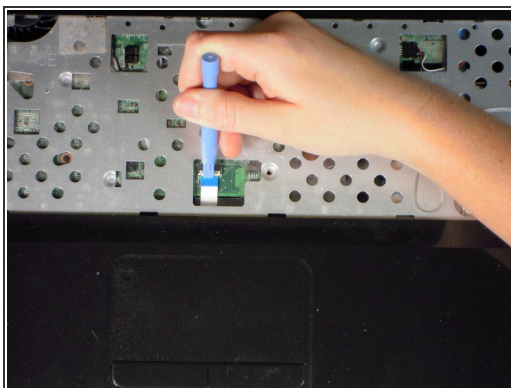
- Using a prying tool, flip the black clip up and to the right. Pull the silver cable out and to the left, the keyboard is now detached from the laptop.

Step 14 — Front Panel



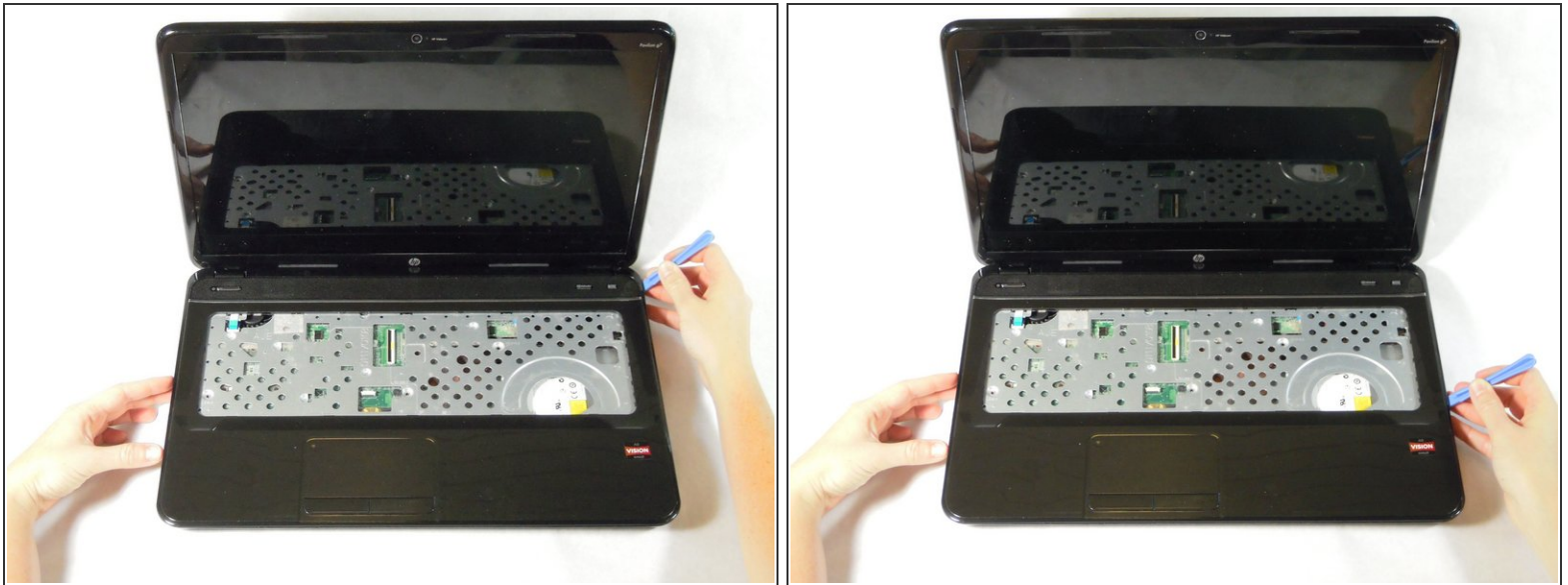
- Unscrew the four 7 mm Phillips #1 screws on the board.

Step 15



- Use a plastic opening tool to lift the white clip up, towards the screen.
- Pull the white cable with blue head, away from the clip.

Step 16



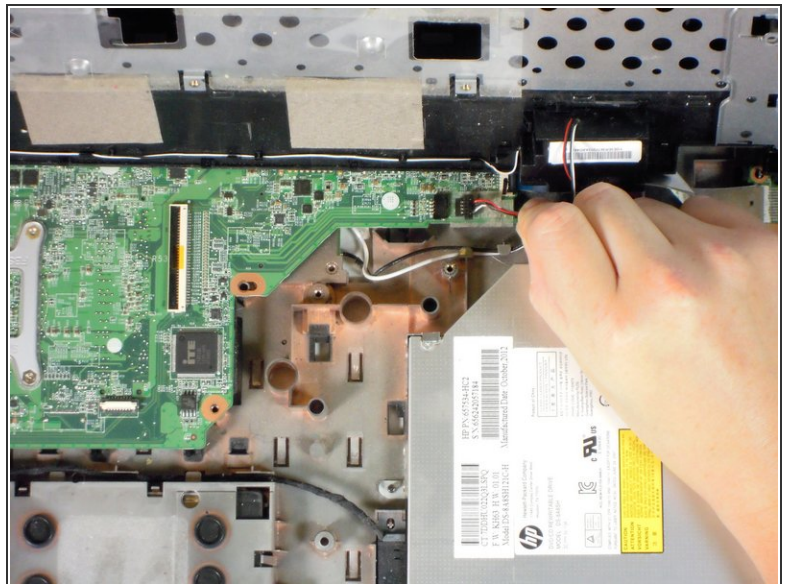
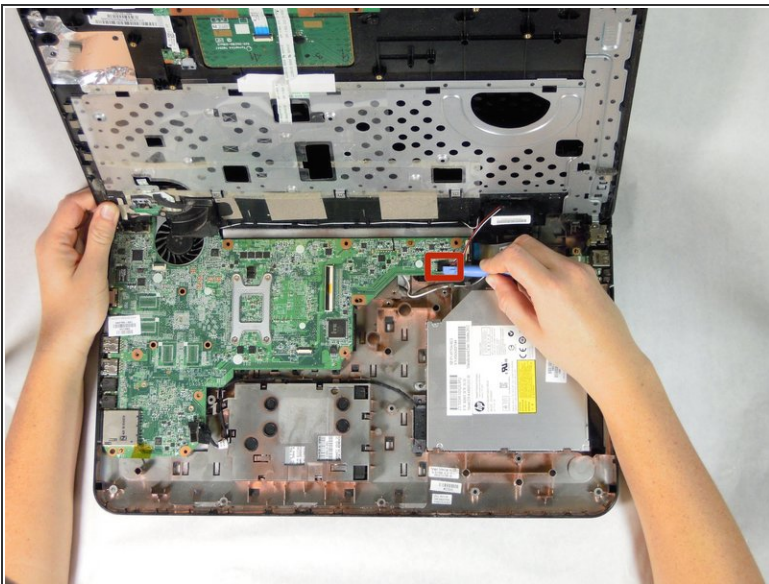
- With a plastic opening tool, pry open a side or corner of the top panel. Slide the tool around the rest of the panel to release it from the clips.
- ⓘ If you have to use a large amount of force, you may not have removed all the necessary screws. Double check to ensure you have.
- ⓘ You should hear clips releasing from the board.

Step 17



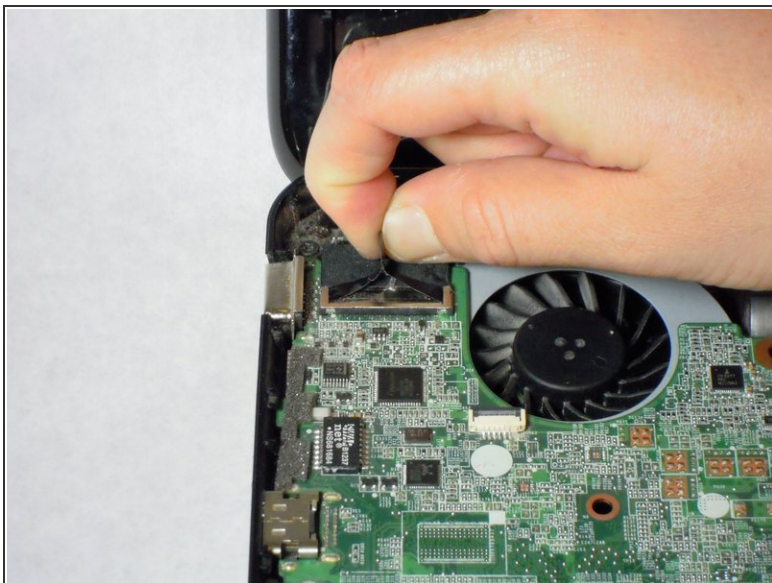
- ⚠️ Lifting the top panel too quickly or forcefully may damage the speaker cable, which is still attached underneath.
- Rotate the top panel away from you, keeping the back near the hinge of the laptop to avoid damaging the speaker cable.

Step 18



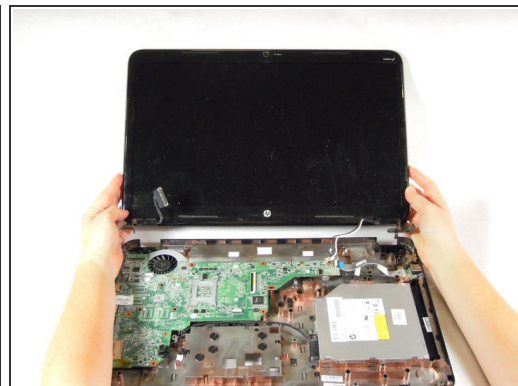
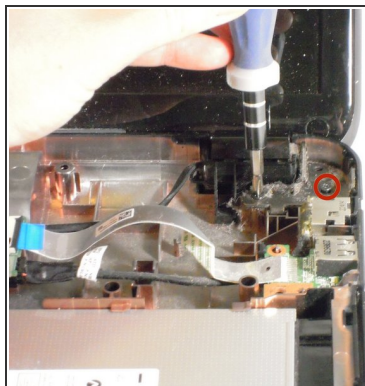
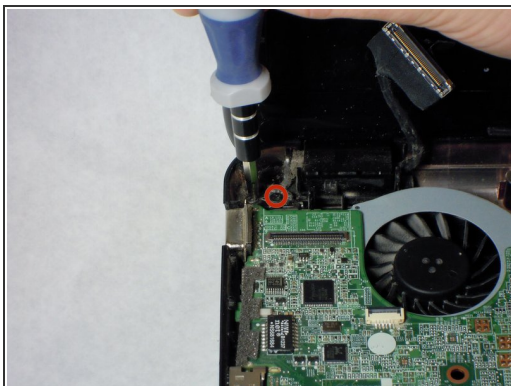
- Using a plastic opening tool, disconnect the black speaker connector from the top right of the motherboard.
- Set aside the top panel until you are ready to reassemble your laptop.

Step 19 — Screen



- In the top left hand corner, disconnect the monitor cable from the motherboard by pulling up on the black tab.

Step 20



- Unscrew the four black 7 mm Phillips #1 screws that attach the hinges to the case.
- Remove the screen assembly from the laptop.

Step 21



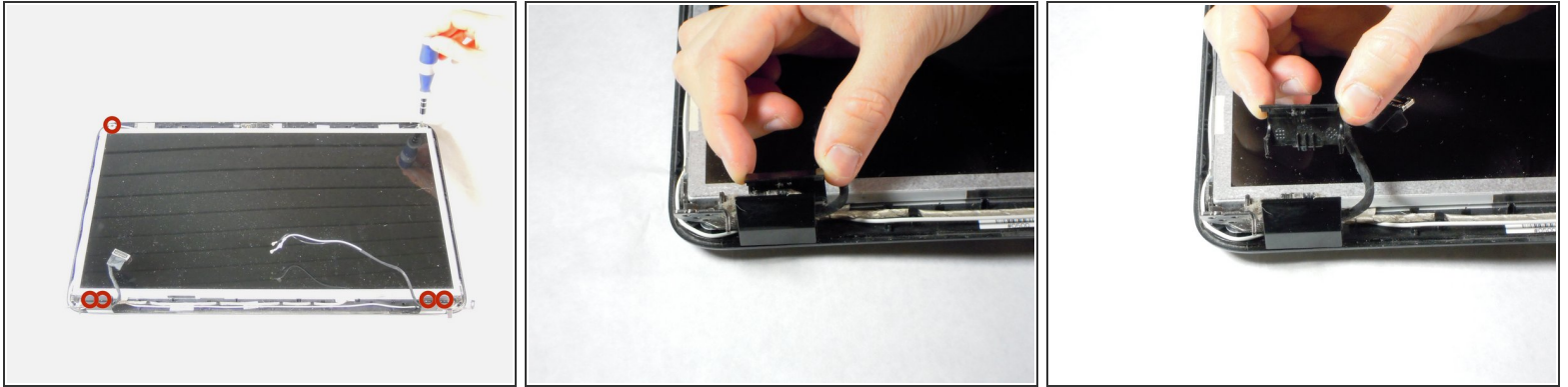
- Using tweezers, remove the two screw covers at the bottom of the screen.
- Unscrew the two 6 mm Phillips #1 screws from the bottom of the screen.

Step 22



- Firmly pry the front screen cover off. Slide the prying tool around the front screen.


Step 23



- Unscrew the six 5 mm Phillips #1 screws.
- Remove the two black hinge covers.

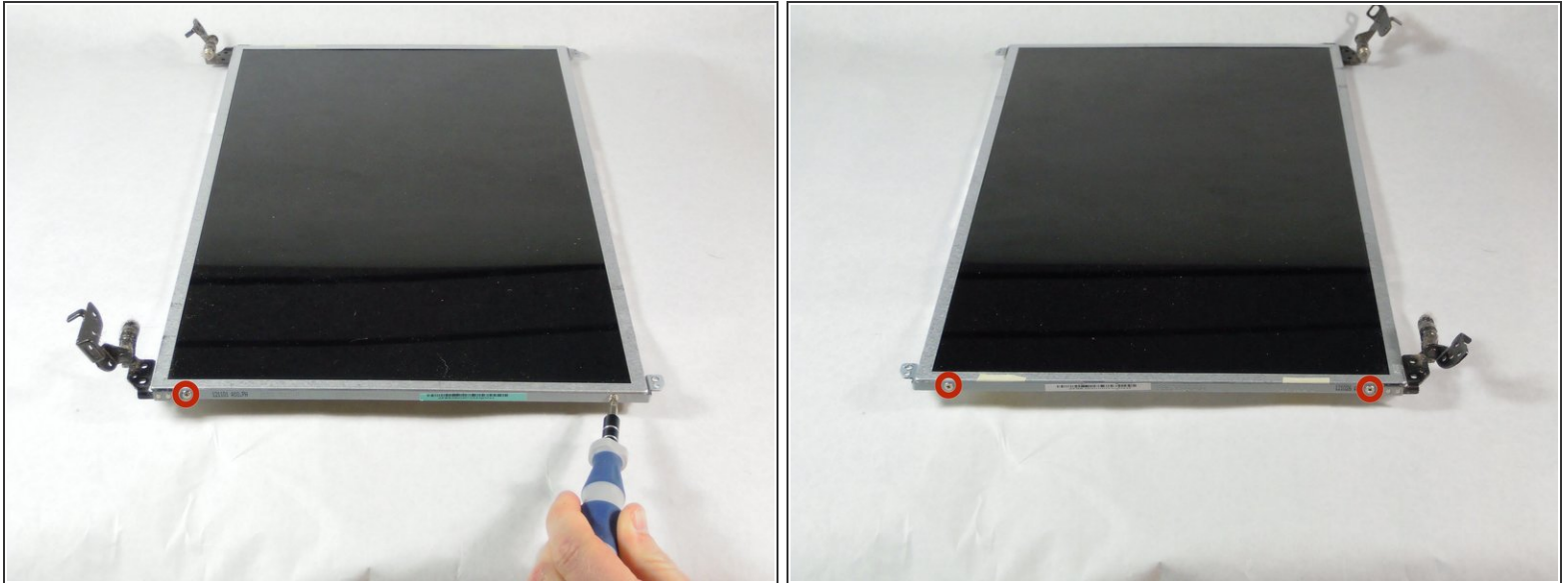
Step 24



 Be careful when moving the screen, you may damage the monitor and webcam cable.

- Gently remove the screen from its housing. Turn the screen over (parallel to you) and disconnect the webcam cable.
- Separate the webcam cable from the screen.

Step 25



- Remove the four 4 mm Phillips #1 screws from the sides of the screen.
- Remove the two hinge assemblies.

To reassemble your device, follow these instructions in reverse order.