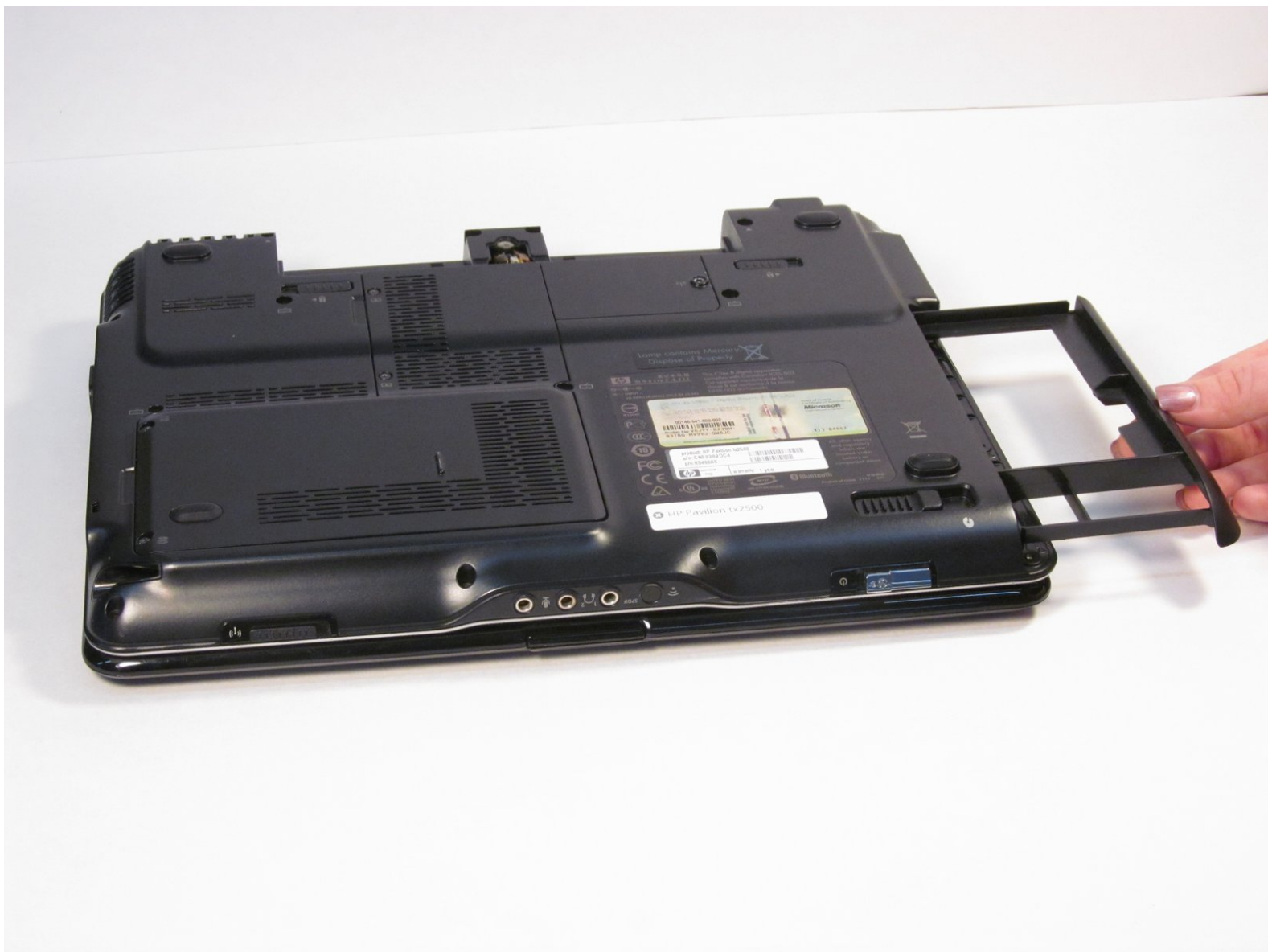




HP Pavilion tx2500 Optical Drive Replacement

This guide will walk you through how to disassemble and replace the Optical Drive for the HP Pavilion tx2500.

Written By: Kelsey



INTRODUCTION

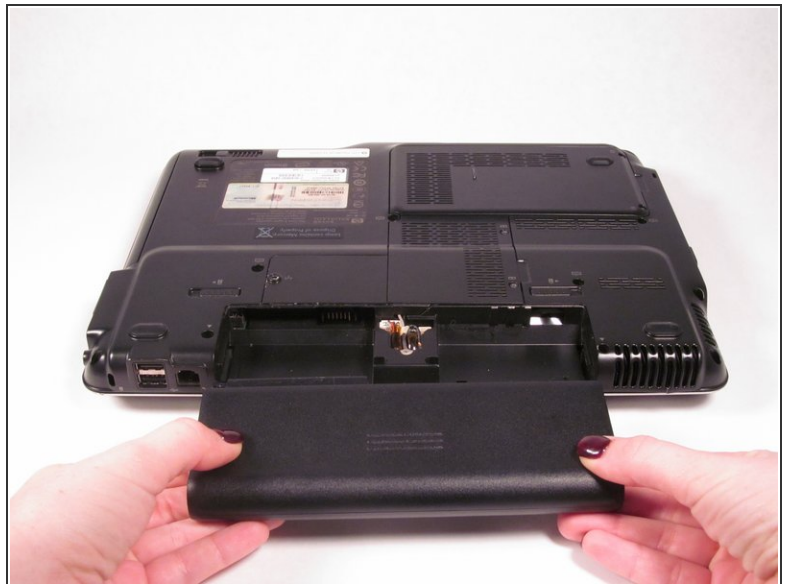
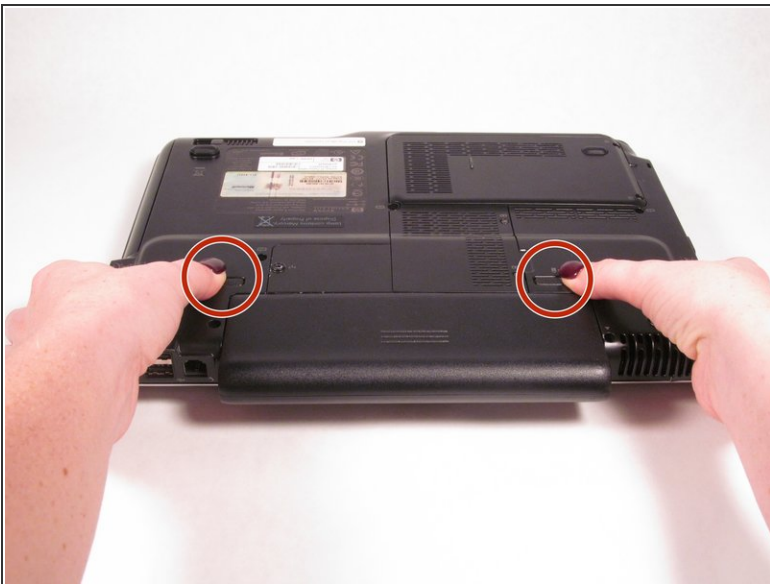
This guide will show you how to take apart your device, so you can take out the optical drive. You will then be able to replace the broken drive with a new one.

Step 1 — Optical Drive



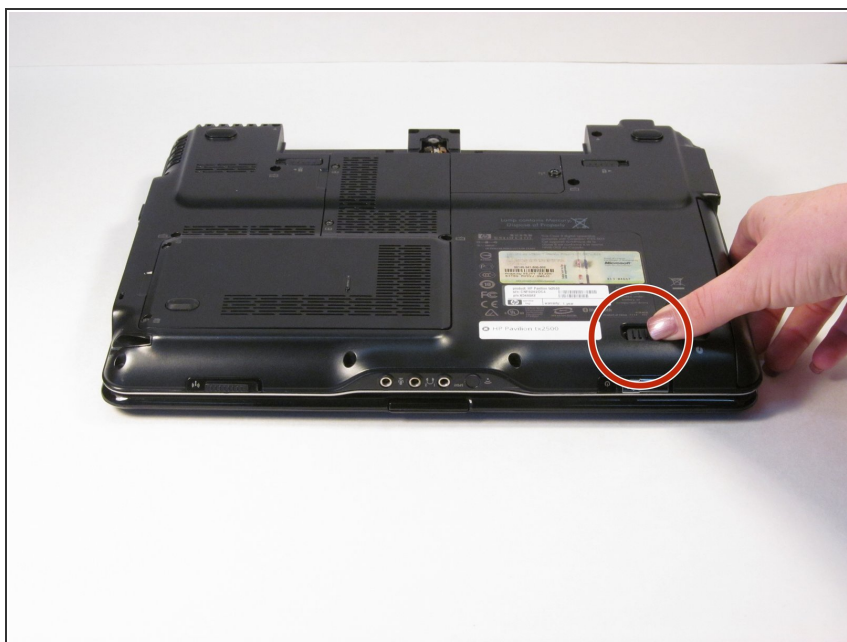
- Completely power down and unplug the device.
- Lay device flat on a soft surface upside down.

Step 2



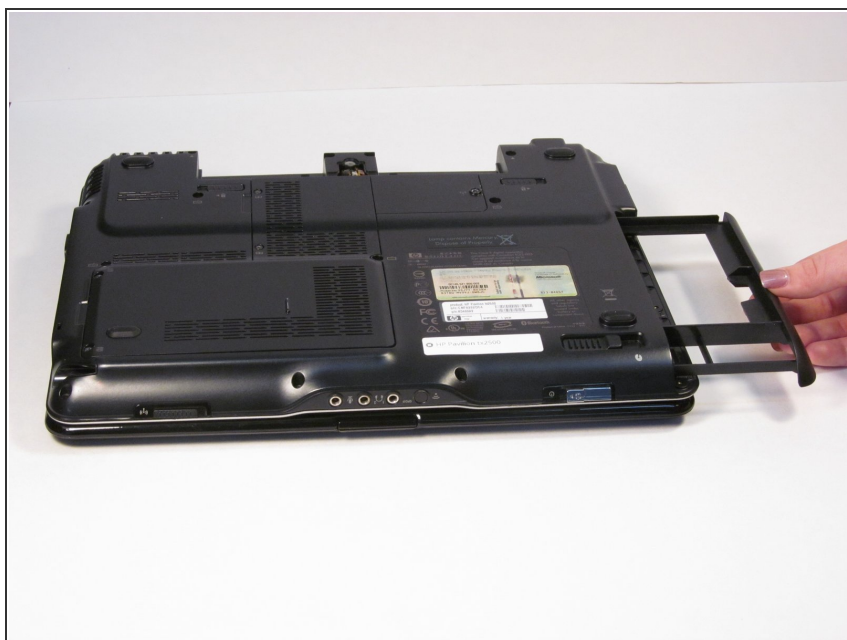
- Slide the two latch locks for the battery to the outside.
- Remove the battery by sliding it straight back.

Step 3



- Slide the optical drive release latch on the bottom right side.

Step 4



- Remove the optical drive from the computer.

To reassemble your device, follow these instructions in reverse order.