



# HP Pavilion x360 m3-u001dx Battery Replacement

This guide will help you to replace the battery on the HP Pavilion x360 m3-u001dx.

Written By: Subhleen



---

## INTRODUCTION

The battery is defective if the power is draining quickly after a full charge, or doesn't receive charge at all. Then use this guide.



### TOOLS:

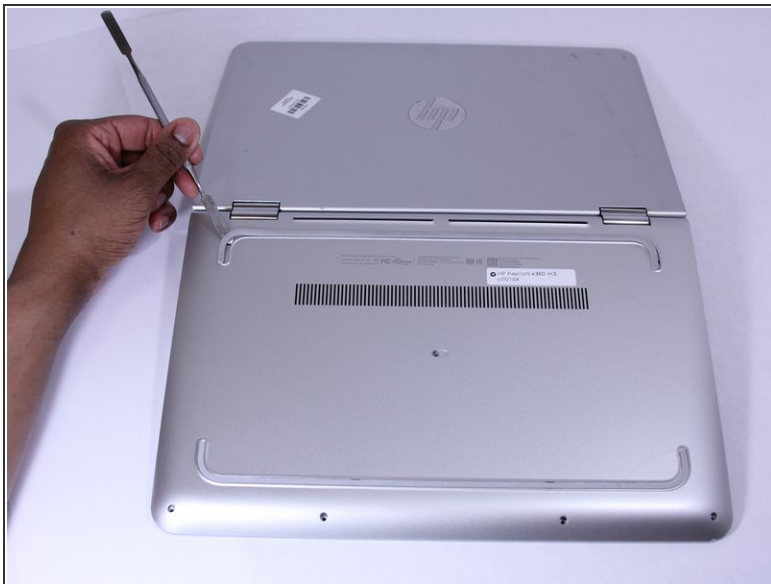
- [Phillips #00 Screwdriver](#) (1)
  - [Metal Spudger](#) (1)
  - [iFixit Opening Tools](#) (1)
-

## Step 1 — Keyboard



- Shut down the computer.
  - Disconnect the power and all external devices connected to the computer.
- ⚠ Working on your device while it is turned on may result in electric shock.

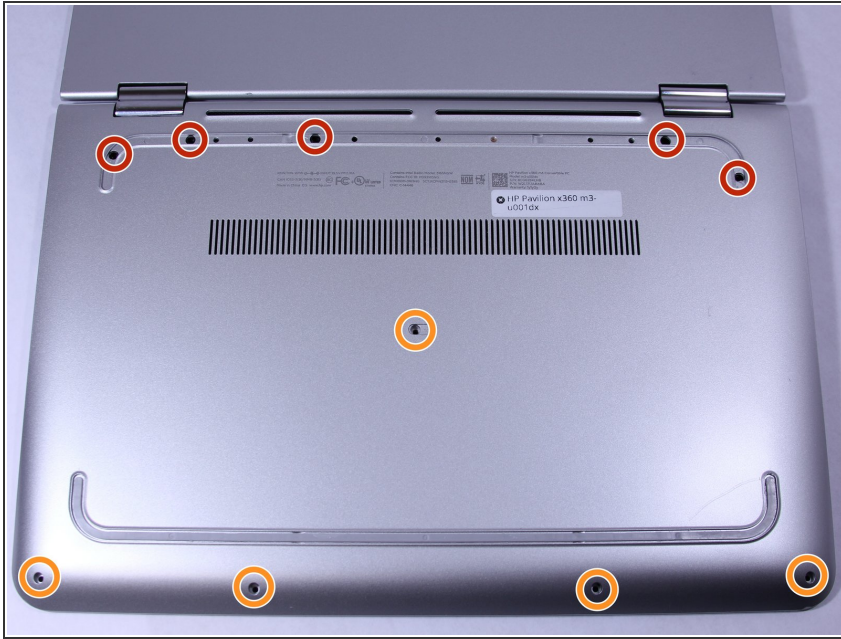
## Step 2



- Use a Metal Spudger and remove the rubber foot closet from the bottom of the laptop.



## Step 3



- Remove all of the screws located on the bottom of the laptop:
  - 5 Phillips 2.4 x 5.7 mm screws
  - 5 Phillips 2.0 x 5.0 mm screws
  - ① Make special note of each screw and screw lock size and location during removal and replacement.


## Step 4



- Turn the computer over onto its base, with the computer open and the keyboard facing upward.

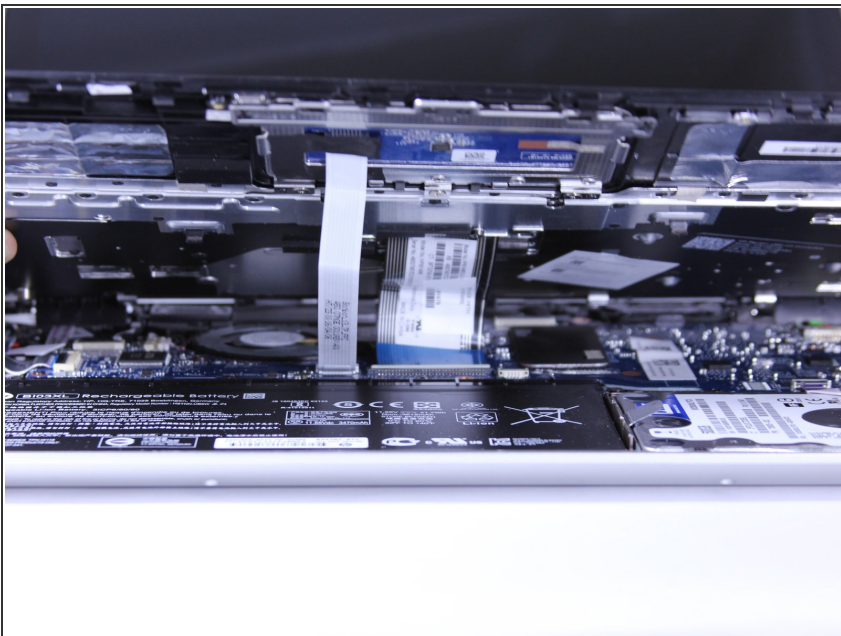
## Step 5




 The keyboard is attached internally by clips. Use a small amount of force when removing the keyboard.

- Use the Plastic Opening Tool to separate the keyboard from the base of the laptop.

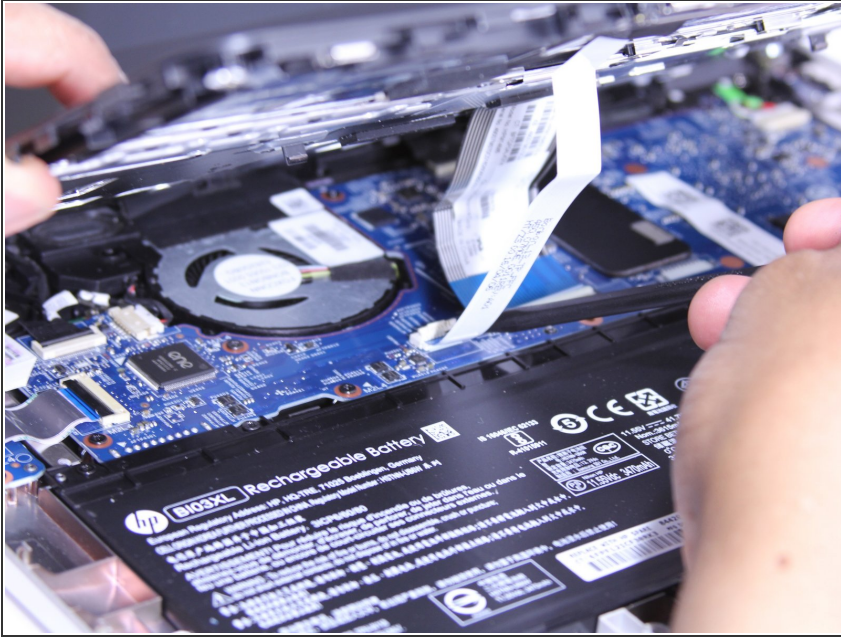
## Step 6



- Raise the keyboard slightly to access the touch pad and keyboard cables.
-  Raising the keyboard too far or with excessive force may cause damage to the keyboard, touch pad cables, or their connectors.



## Step 7



- Disconnect the ribbon cables attaching the touch pad and keyboard to the system board (motherboard).
- Using the Heavy-Duty Spudger lift up the plastic locks connecting the ribbon cable to the motherboard.
- Use the blue plastic tab on the ribbon cable to pull it out from the lock on the motherboard.

## Step 8



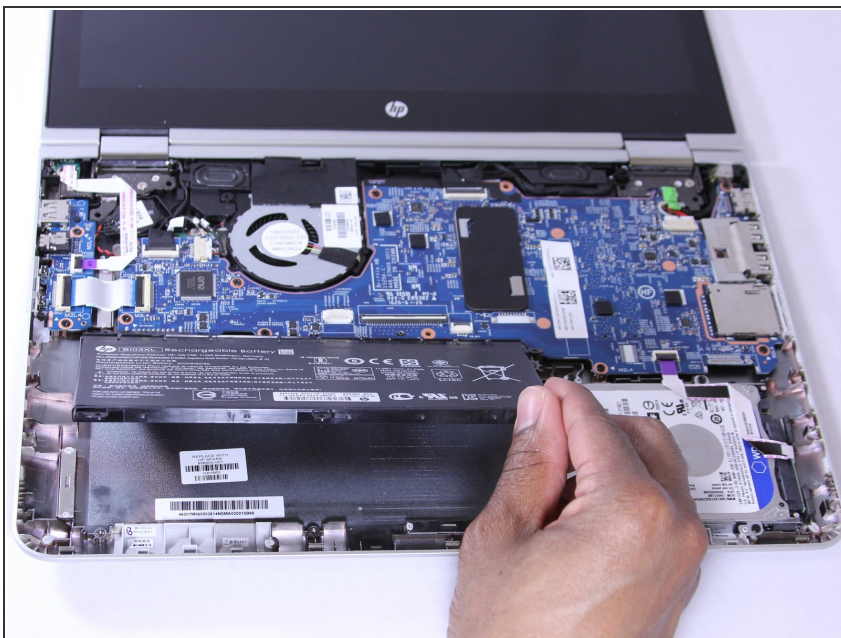
- Lift the keyboard away from the base of the laptop.

## Step 9 — Battery



- Using the Phillips 00 Screwdriver, remove 6 Phillips 2.0 x 4.6 mm screws from the perimeter of the battery.
- ⓘ Make special note of each screw and screw lock size and location during removal and replacement.

## Step 10



- ⚠ Carefully lift the battery up from lower right corner and disconnect it from the motherboard.

Follow these instructions in reverse order to reassemble your device.