



HP Pavilion x360 m3-u001dx Hard Drive Replacement

This guide will help you to replace the hard-drive on the HP Pavilion x360 m3-u001dx.

Written By: Subhleen



INTRODUCTION

If the hard drive is malfunctioning or needs to be upgraded, use this guide to replace it.



TOOLS:

- [Phillips #00 Screwdriver](#) (1)
- [Metal Spudger](#) (1)
- [Heavy-Duty Spudger](#) (1)
- [iFixit Opening Tools](#) (1)



PARTS:

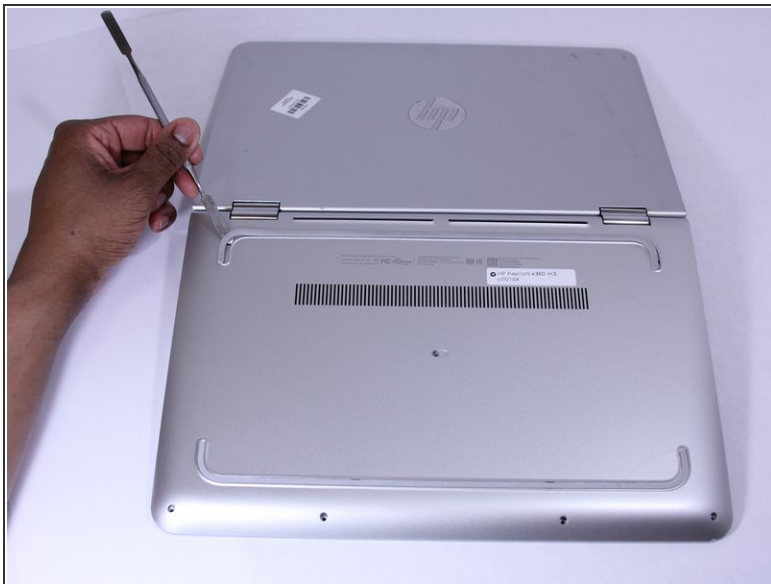
- [1 TB SSD / Upgrade Bundle](#) (1)
- [250 GB SSD / Upgrade Bundle](#) (1)
- [500 GB SSD / Upgrade Bundle](#) (1)
- [2 TB SSD / Upgrade Bundle](#) (1)

Step 1 — Keyboard



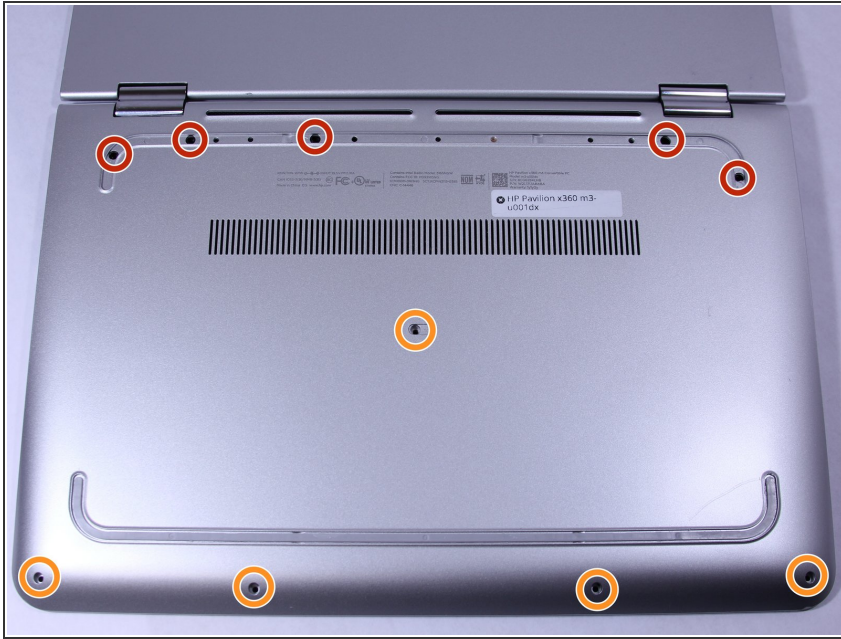
- Shut down the computer.
 - Disconnect the power and all external devices connected to the computer.
- ⚠ Working on your device while it is turned on may result in electric shock.

Step 2



- Use a Metal Spudger and remove the rubber foot closet from the bottom of the laptop.

Step 3



- Remove all of the screws located on the bottom of the laptop:
 - 5 Phillips 2.4 x 5.7 mm screws
 - 5 Phillips 2.0 x 5.0 mm screws
 - ① Make special note of each screw and screw lock size and location during removal and replacement.


Step 4



- Turn the computer over onto its base, with the computer open and the keyboard facing upward.

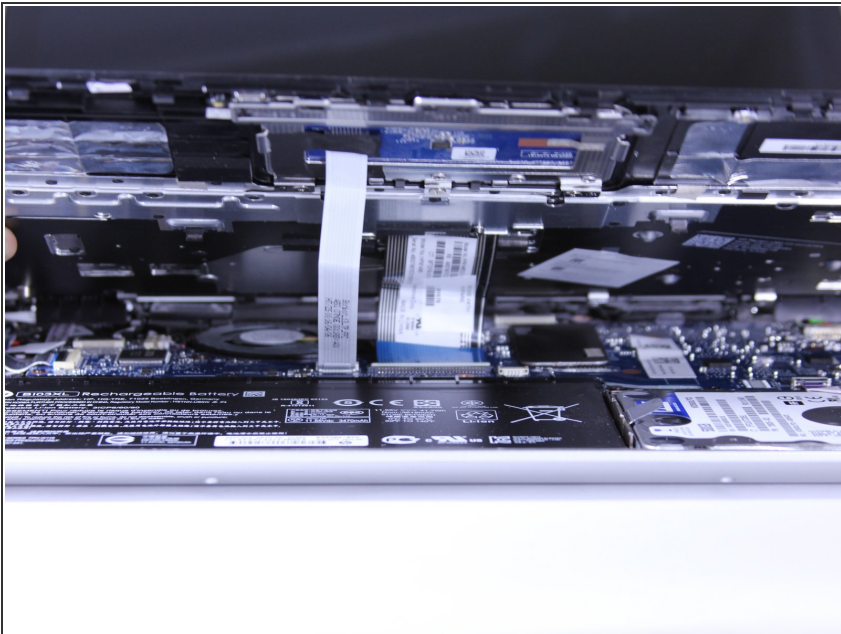
Step 5




 The keyboard is attached internally by clips. Use a small amount of force when removing the keyboard.

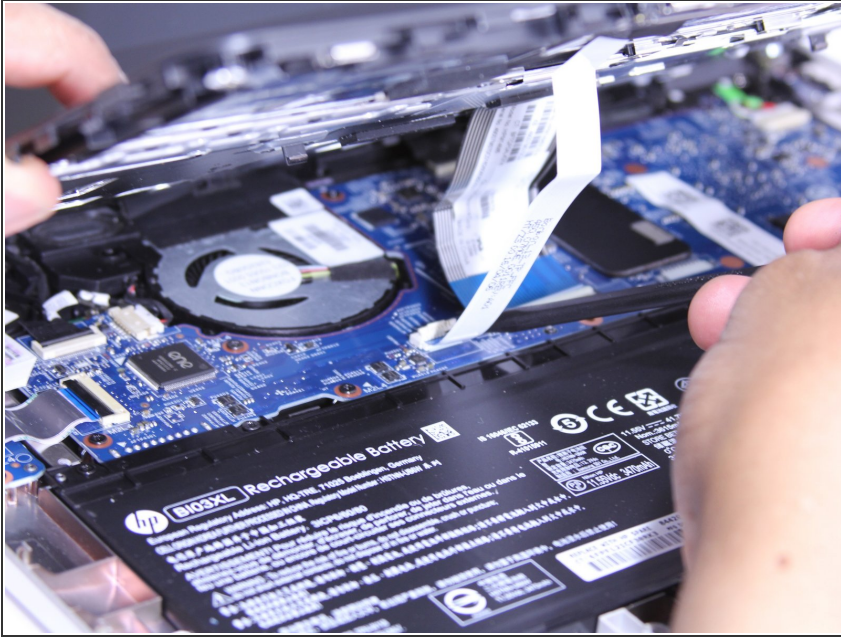
- Use the Plastic Opening Tool to separate the keyboard from the base of the laptop.

Step 6



- Raise the keyboard slightly to access the touch pad and keyboard cables.
-  Raising the keyboard too far or with excessive force may cause damage to the keyboard, touch pad cables, or their connectors.

Step 7



- Disconnect the ribbon cables attaching the touch pad and keyboard to the system board (motherboard).
- Using the Heavy-Duty Spudger lift up the plastic locks connecting the ribbon cable to the motherboard.
- Use the blue plastic tab on the ribbon cable to pull it out from the lock on the motherboard.

Step 8



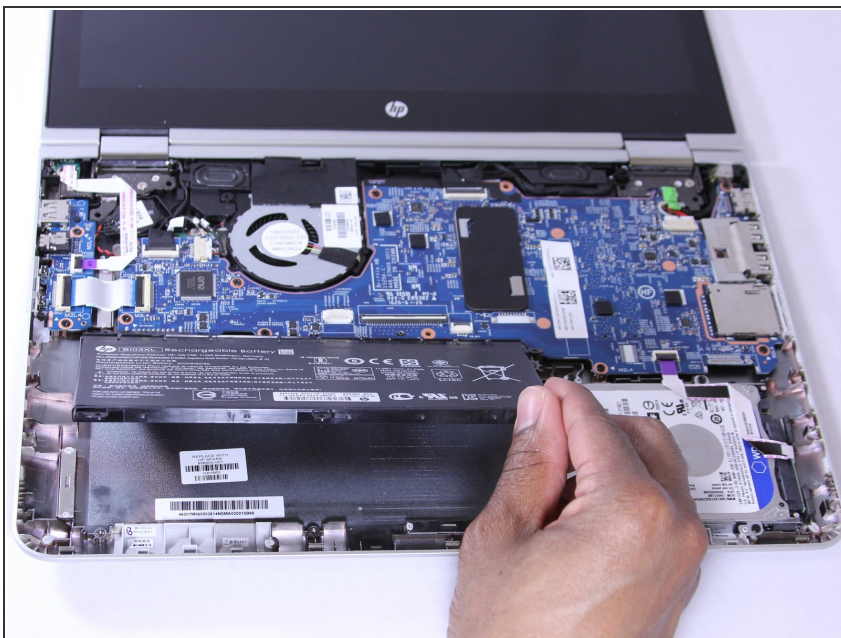
- Lift the keyboard away from the base of the laptop.

Step 9 — Battery



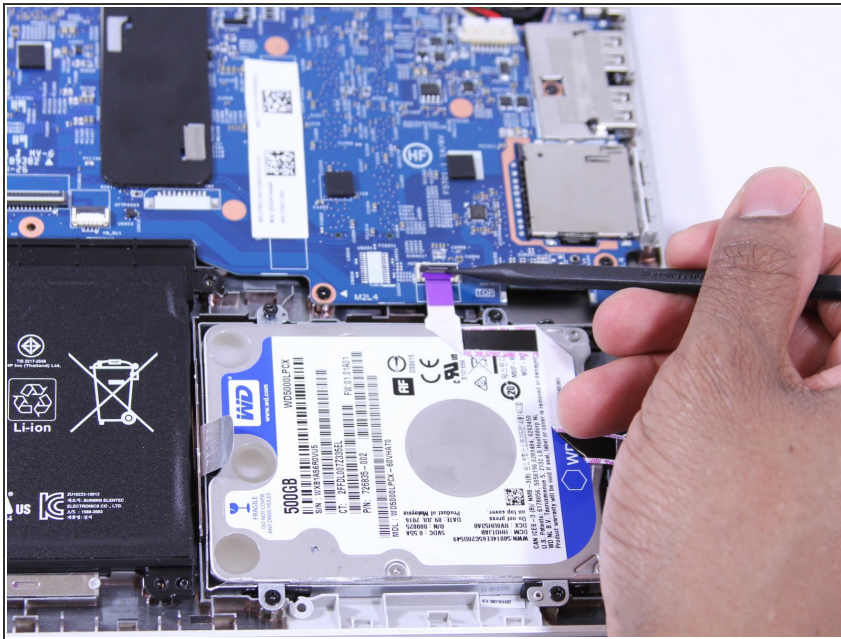
- Using the Phillips 00 Screwdriver, remove 6 Phillips 2.0 x 4.6 mm screws from the perimeter of the battery.
- ⓘ Make special note of each screw and screw lock size and location during removal and replacement.

Step 10



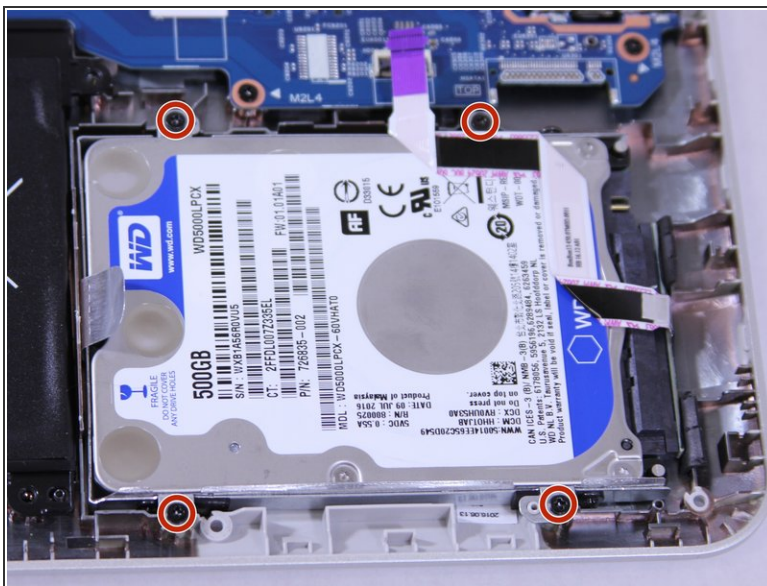
- ⚠ Carefully lift the battery up from lower right corner and disconnect it from the motherboard.

Step 11 — Hard Drive



- Disconnect the ribbon cables attaching the hard drive to the system board (motherboard).
- Using the Heavy-Duty Spudger lift up the plastic locks connecting the ribbon cable to the motherboard.
- Use the purple plastic tab on the ribbon cable to pull it out from the lock on the motherboard.

Step 12



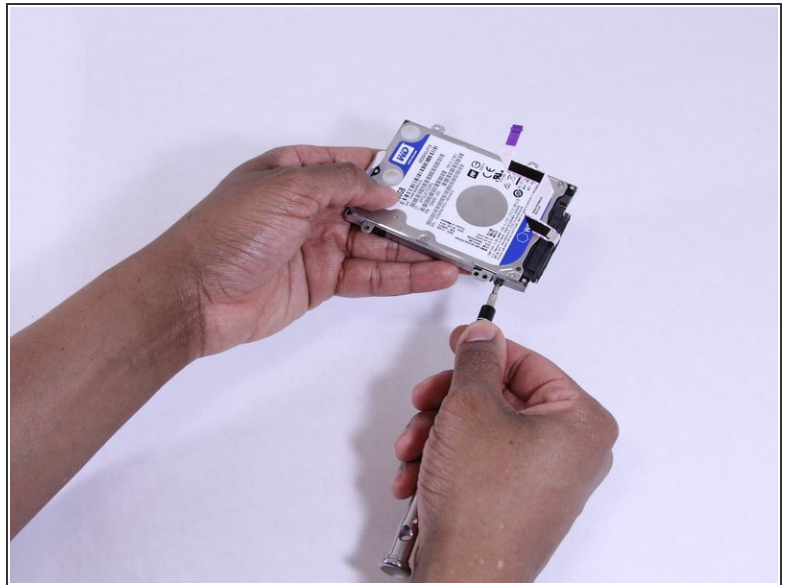
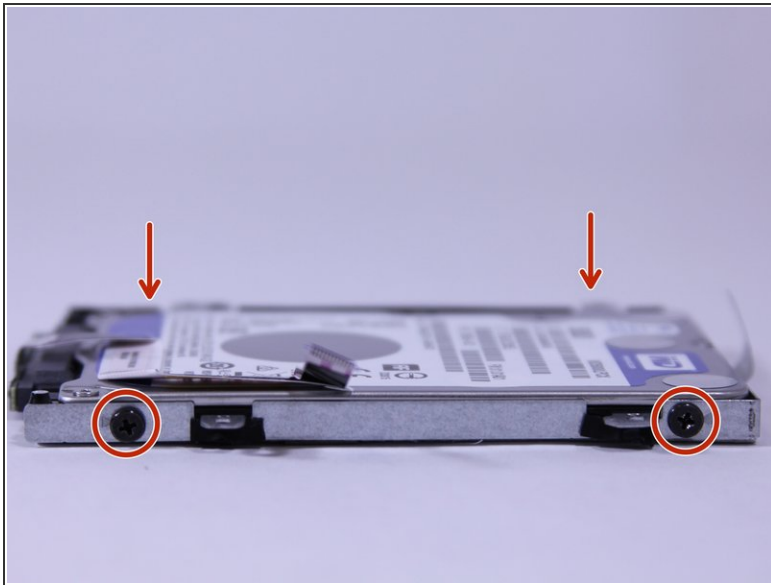
- Using the Phillips00 Screw Driver, remove 4 Phillips 2.0 x 4.6 mm screws around the perimeter of the hard drive.
- ⓘ Make special note of each screw and screw lock size and location during removal and replacement.

Step 13



- Using the tab provided, lift and remove the hard drive out of the laptop base.

Step 14



- Using the Phillips00 Screw Driver, remove 4 Phillips 3.0 x 3.7 mm screws on exterior mounting bracket.
 - ⓘ There are 2 Phillips screws on each side of the hard drive bracket.
 - ⓘ Make special note of each screw and screw lock size and location during removal and replacement.

Step 15



- Remove the mounting bracket.

Follow these instructions in reverse order to reassemble your device.