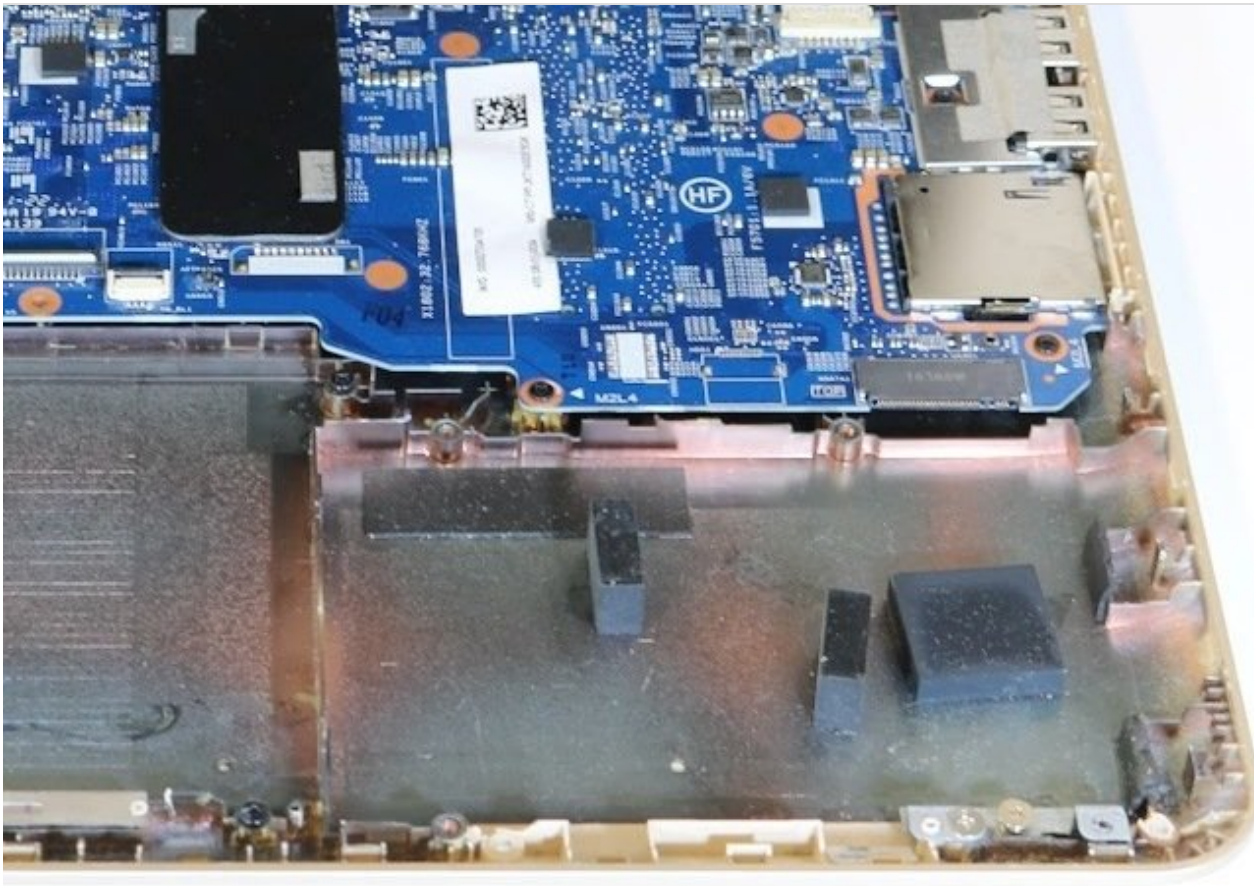




HP Pavilion x360 m3-u103dx HP Pavilion x360 m3-u103dx Hard Drive Replacement Replacement

How to replace the hard drive for the HP Pavilion x360 m3-u103dx.

Written By: Teresita Aragon



INTRODUCTION

In this guide you will be required to remove the keyboard and disconnect three wires from the device in order to replace the hard drive. You will need to use a iFixit Pro Tech Toolkit.

This task requires patience and attention to detail



TOOLS:


- [Phillips #00 Screwdriver](#) (1)
 - [Metal Spudger](#) (1)
 - [Heavy-Duty Spudger](#) (1)
-

Step 1 — Hard Drive



- Power off computer.

- Flip the laptop over.

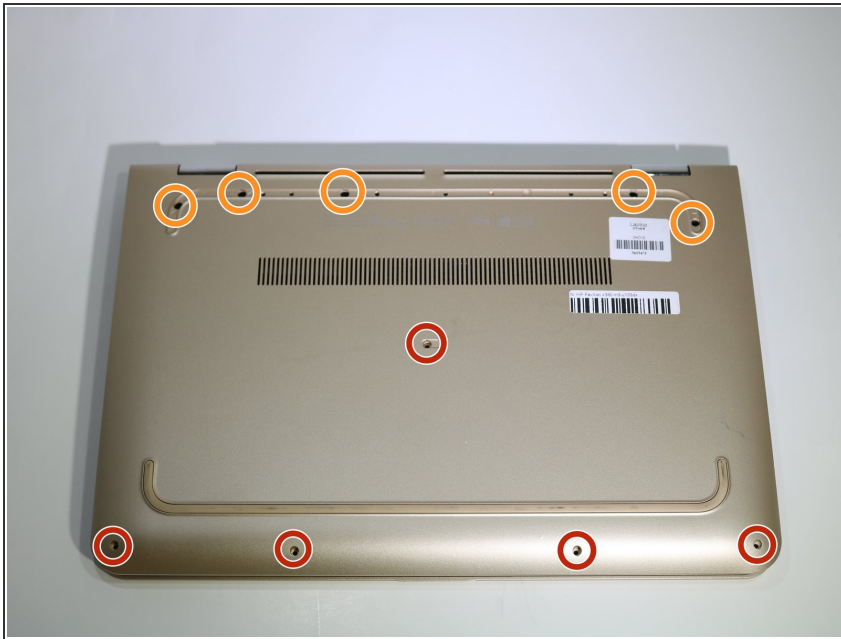
 Working on your device while its powered on may cause damage to your device.

Step 2



- Using a Metal Spudger remove the rubber foot closet.

Step 3



- Remove all screws located at the bottom of the laptop.
- 5 Phillips 2.4 x 5.7 mm screws.
- 5 Phillips 2.8 x 5.0 mm screws.

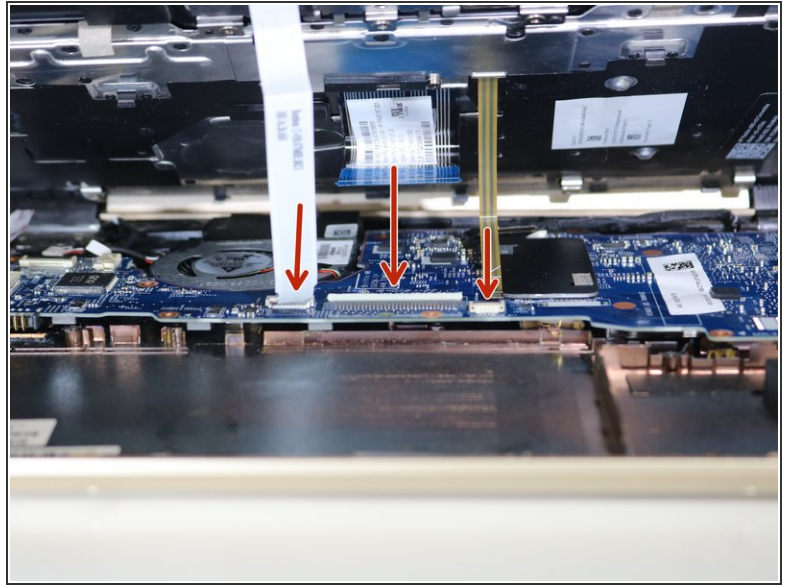
Step 4



- Turn laptop over to on its base.
- Open computer and pry over keyboard panel using the Metal Spudger.

⚠ Be careful not to pull or disconnect ribbon cables first.

Step 5



⚠ Slightly pull off the keyboard and be careful of the three ribbons.

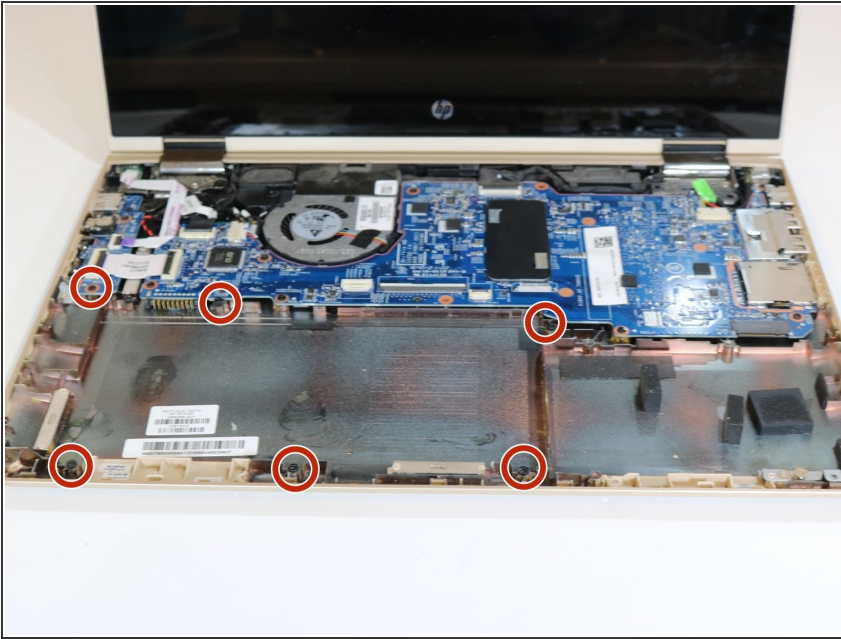
- Remove the ribbons connected to the frame by gently pulling them out of their connectors.

Step 6



- Lift the keyboard away from the base of the laptop.

Step 7



- Using the Phillips 00 Screwdriver, remove 6 Phillips screws around the perimeter of the battery.

Step 8



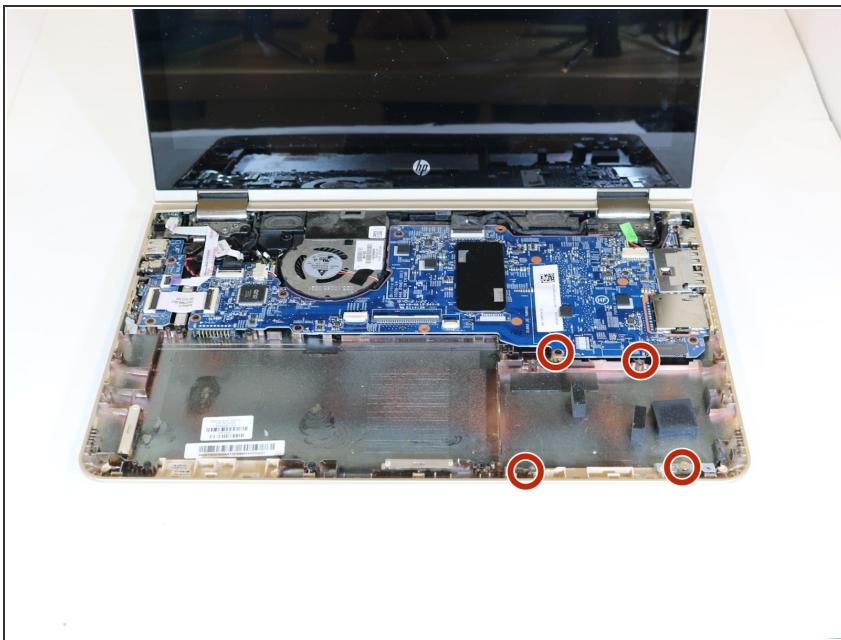
⚠ Carefully pop out the battery using the silver Metal Spudger to disconnect it from the motherboard.

Step 9



- Disconnect the ribbon cables attaching the hard drive to the motherboard.
- Using the Heavy-Duty Spudger lift up the plastic locks connecting the ribbon cable to the motherboard.
- Using the purple plastic tab on the ribbon cable, pull it out from the lock on the motherboard.

Step 10



- Using the Phillips00 Screw Driver, remove 4 Phillips screws.

Step 11



- Using the tab that is provided, lift the hard drive to remove it from the laptop base.

Step 12



- Using the Phillips00 Screw Driver, remove 4 Phillips screws on the exterior of mounting bracket.

Step 13



- Remove the mounting bracket.

To reassemble your device, follow these instructions in reverse order.