



HP Pavilion zd8000 Switch Cover Replacement

Written By: Allie Menard



INTRODUCTION

You'll need to remove the switch cover to reach the motherboard.



TOOLS:

- [Phillips #1 Screwdriver](#) (1)
 - [Spudger](#) (1)
 - [Tweezers](#) (1)
-

Step 1 — Battery



- Slide the battery release latch towards you.

Step 2



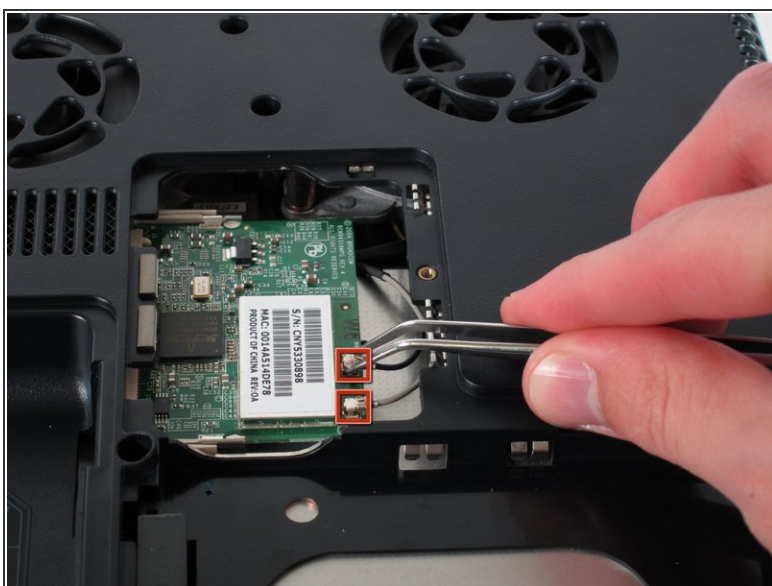
- Pull up on the battery to remove it.

Step 3 — WiFi Card Cables



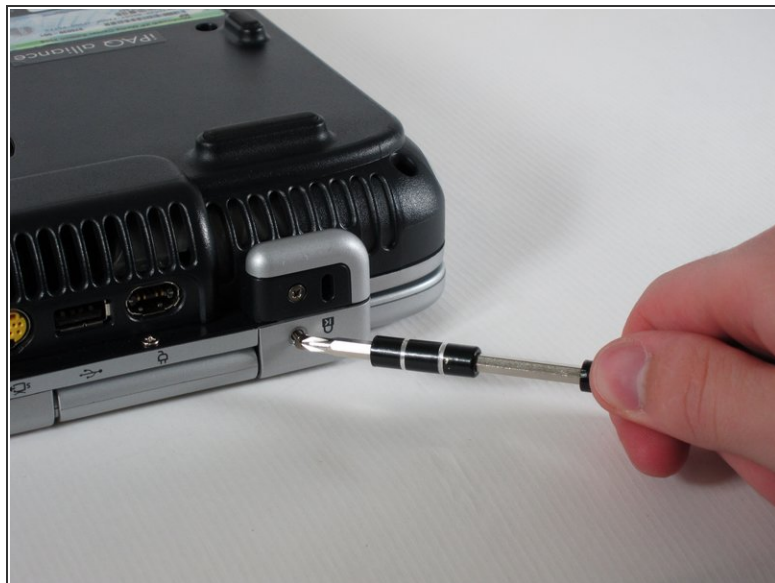
- Unscrew the four 8mm Philips screws marked with an icon resembling a stacks of discs.
- Lift the cover from the right to remove it.

Step 4



- Use tweezers to detach the grey and black cables connected to the green WiFi card.

Step 5 — Switch Cover



- Place the laptop face-down and rotate it 180 degrees so the vents are facing you.
- Remove the five 8mm Philips screws. Three are on the black base and two are near the hinges.

Step 6




- Flip the laptop over.
- Fully open the laptop.

Step 7



- Rotate it so the display is on your right and the keyboard is on your left.

 Lift the switch cover firmly but slowly so you do not snap it.

- Lift the switch cover carefully from one end while sliding the spudger between the switch cover and the laptop to separate them.
- The switch cover should easily separate from the laptop as you run the spudger through.

To reassemble your device, follow these instructions in reverse order.