



# HP Pavilion ze5000 Screen Replacement

Replace a damaged or non-functioning screen for the device.

Written By: Eric Beaudry



---

## INTRODUCTION

This guide will explain how to replace the screen, assuming none of the electric connections have been damaged and the screen is the only damaged part. Some of the inner parts have sharp, metal corner and minor injury can occur if you rush through the guide.



### TOOLS:

- [Spudger](#) (1)
  - [Phillips #0 Screwdriver](#) (1)
  - [Phillips #00 Screwdriver](#) (1)
-

## Step 1 — Screen



- Remove two 5.0 mm Philips #0 screws on the hinge of the device

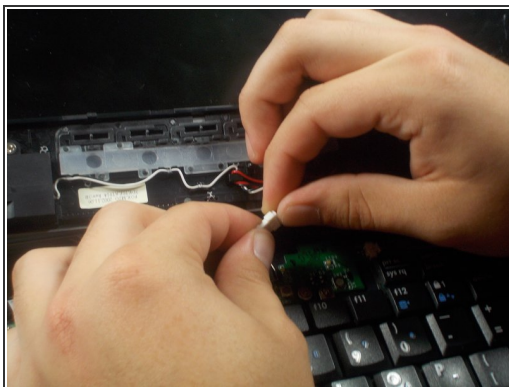
## Step 2



- Using tweezers, gently pull on the hinges to remove the plastic case connected to the hinges

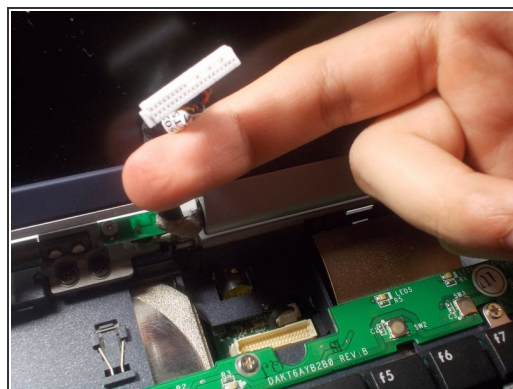
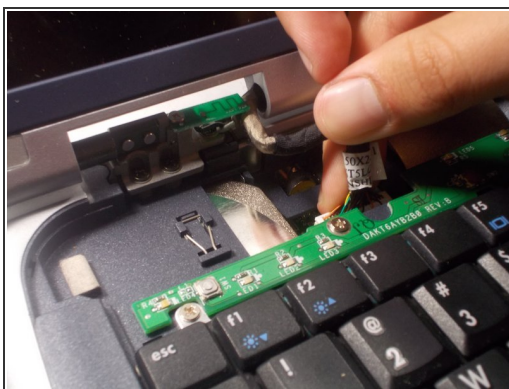
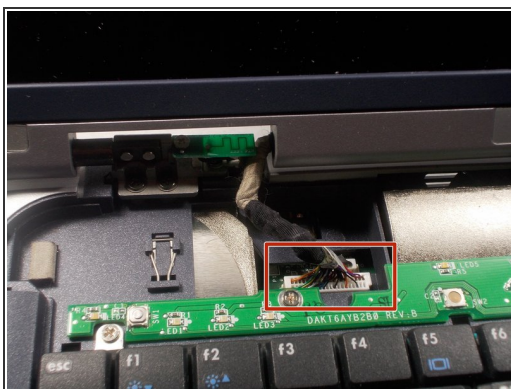


## Step 3



- Remove the connection between the plastic case and interior of the device

## Step 4



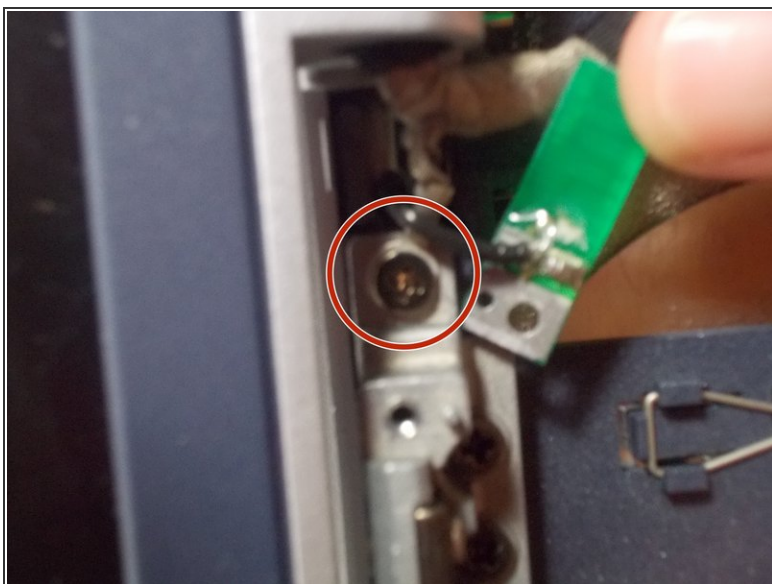
- Remove the connection from the exposed hinge and interior of the device

## Step 5



- Remove the 3.5 mm philips #00 screw on the small circuit board on the hinge

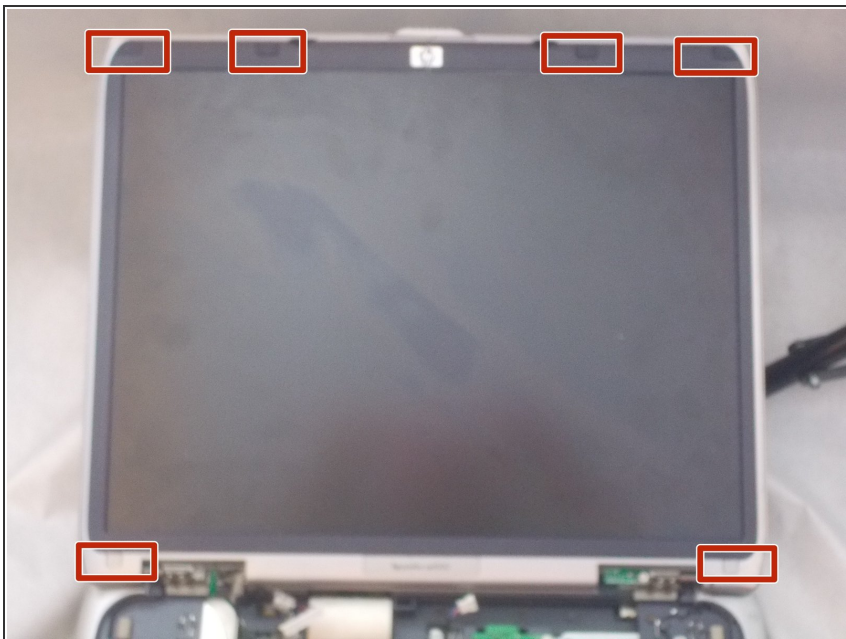
## Step 6



- Remove the 5.0 mm philips #0 screw that was hidden underneath the small circuit board



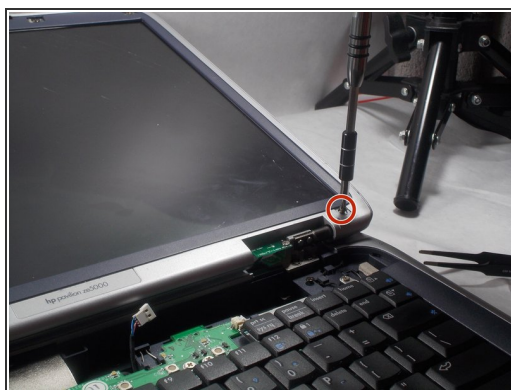
## Step 7



- Remove the 6 plastic caps located in the four corners of the screen and the top of the screen

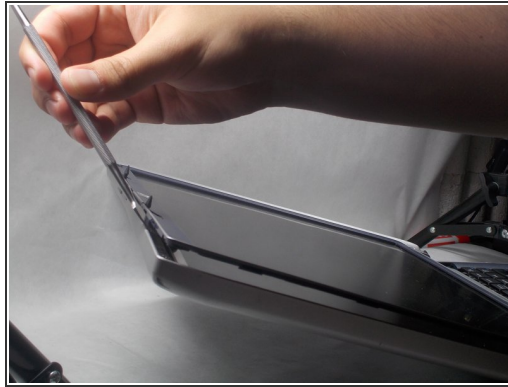
**i** It may be easier to use tweezers for this part

## Step 8



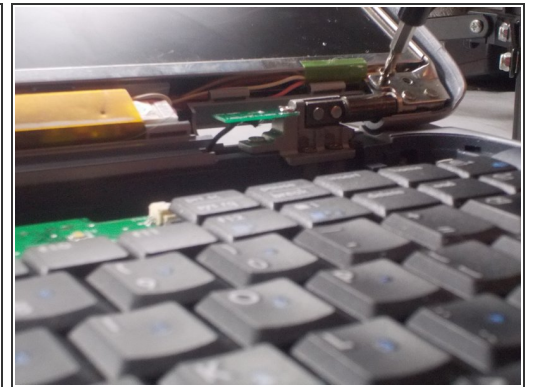
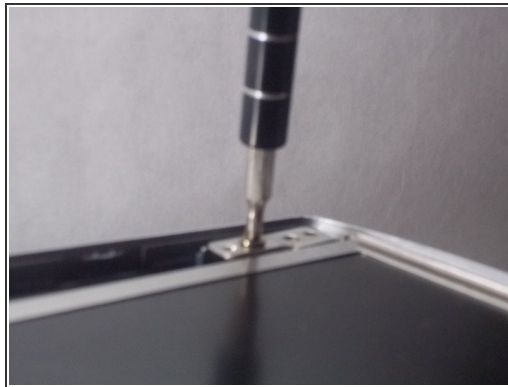
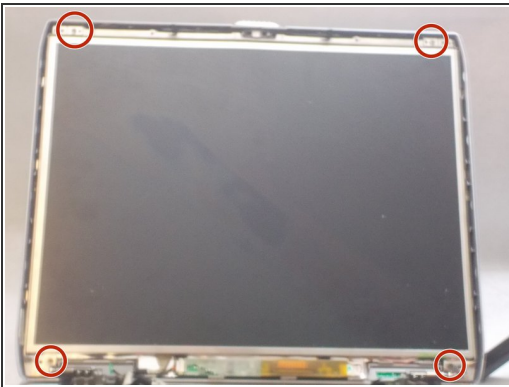
- Unscrew the six 5.0 mm Philips #0 screws underneath the caps

## Step 9



- Using a spudger, pry the plastic casing off of the screen.

## Step 10



- Remove four 5.0 mm Philips #0 screws located in the corners of the screen
- ⓘ These screws locations will be close to the screws locations in step 2.
- ☑ During reassembly, make sure you do not confuse the proper screw placements from this step and step 4.

## Step 11



- Remove the four 3.5 mm Philips #00 screws from the sides of the aluminum casing.

**i** There will be two 3.5 mm Philips screws on each side

To reassemble your device, follow these instructions in reverse order.