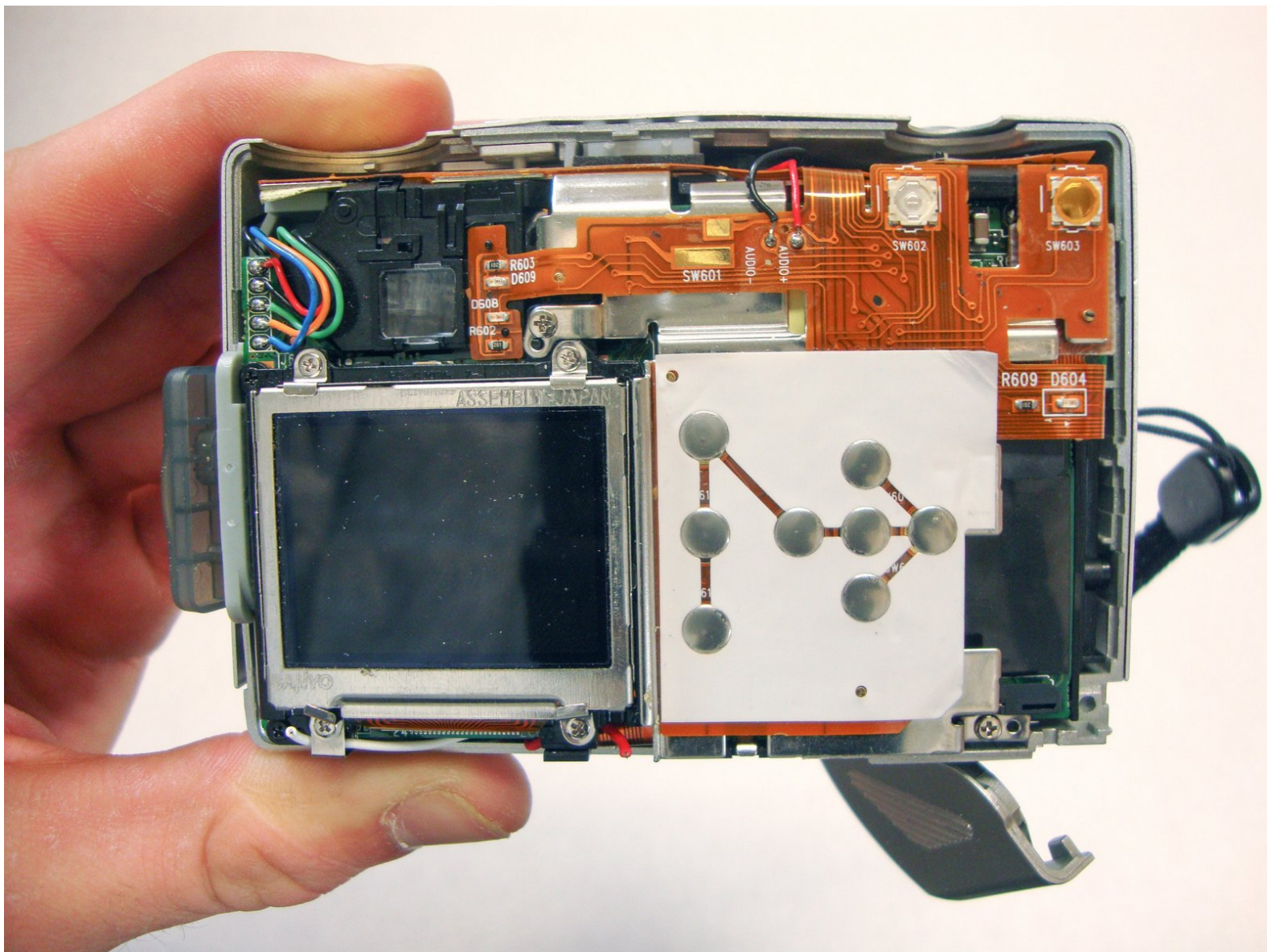




HP Photosmart 935 LCD Screen Replacement

This guide will show you how to install a new LCD screen if your current screen is cracked or broken

Written By: Nick Oleskowicz



INTRODUCTION

This guide is meant to teach reader to install a new LCD screen. If the current LCD screen is broken or cracked LCD screen, this guide will help the reader to replace it with a new one.



TOOLS:

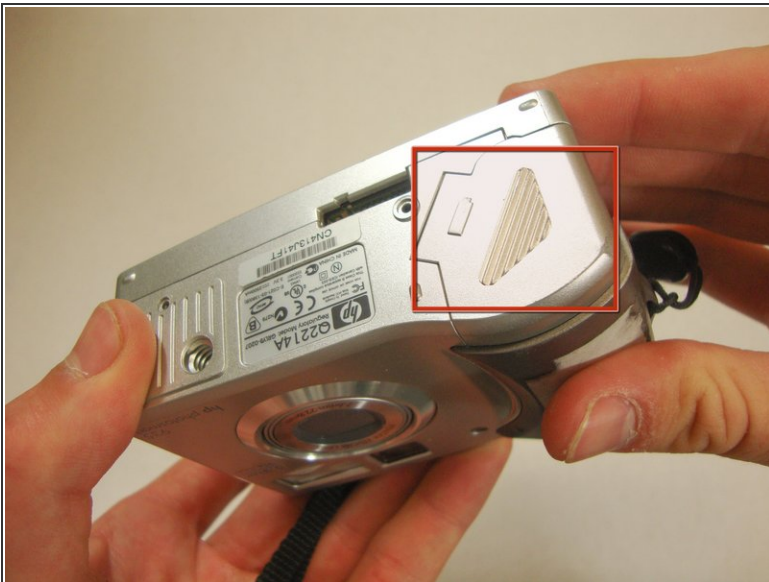
- [Phillips #00 Screwdriver](#) (1)
-

Step 1 — Batteries



- Flip the camera over so the bottom is facing you.

Step 2



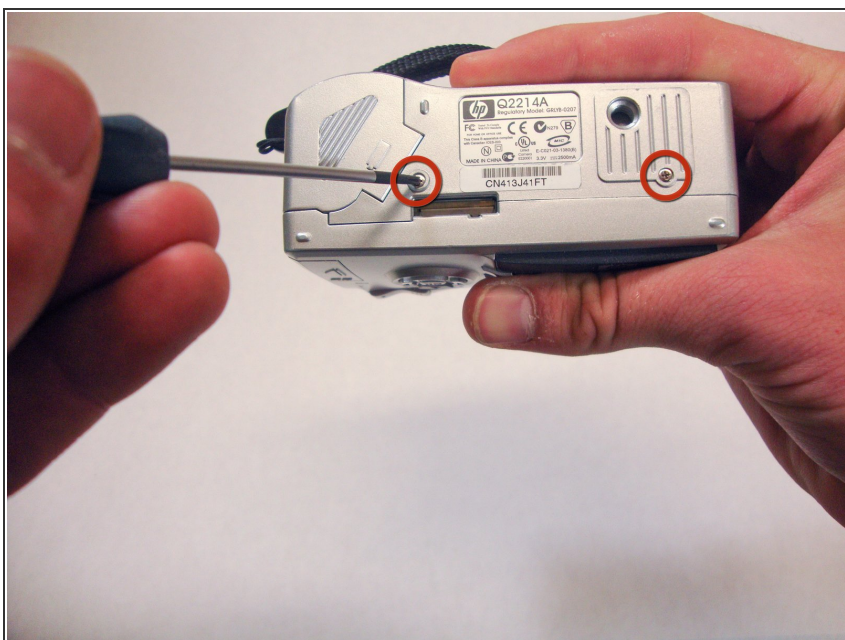
- Open the cover on the bottom by sliding it in the direction of the arrow.

Step 3



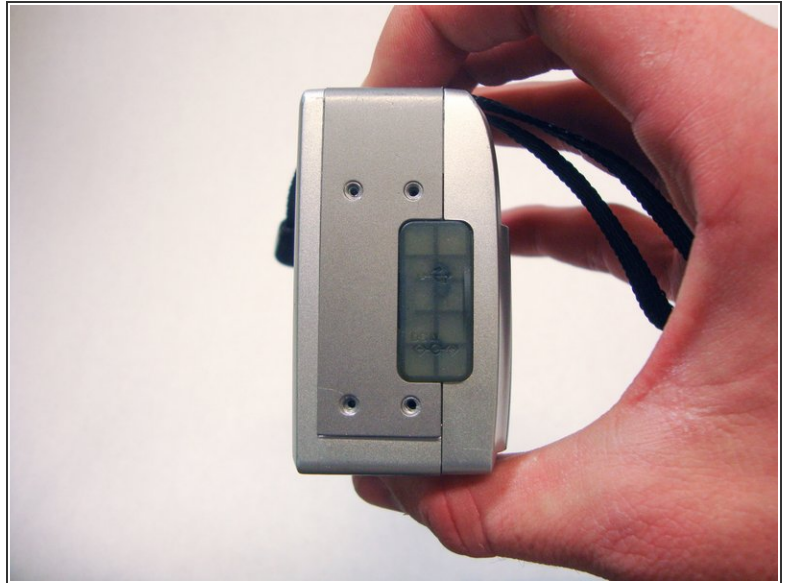
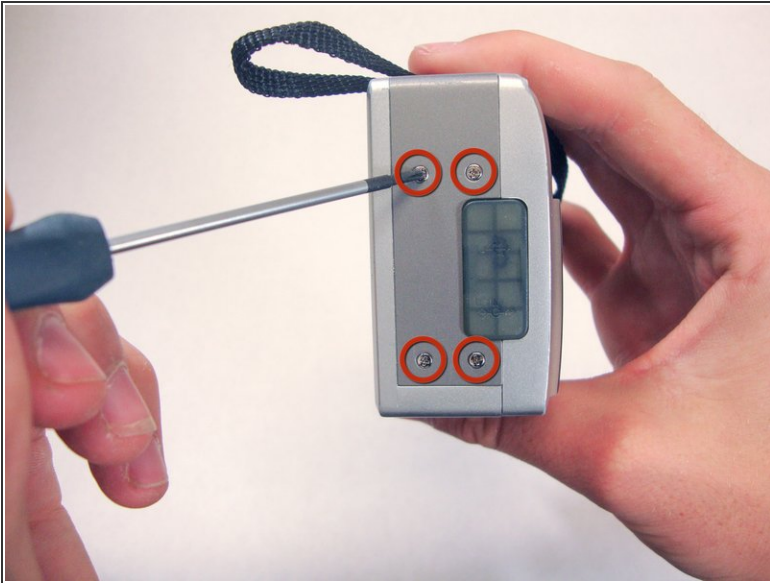
- Remove the batteries by pulling up on the top with your fingers.

Step 4 — Plastic Casing



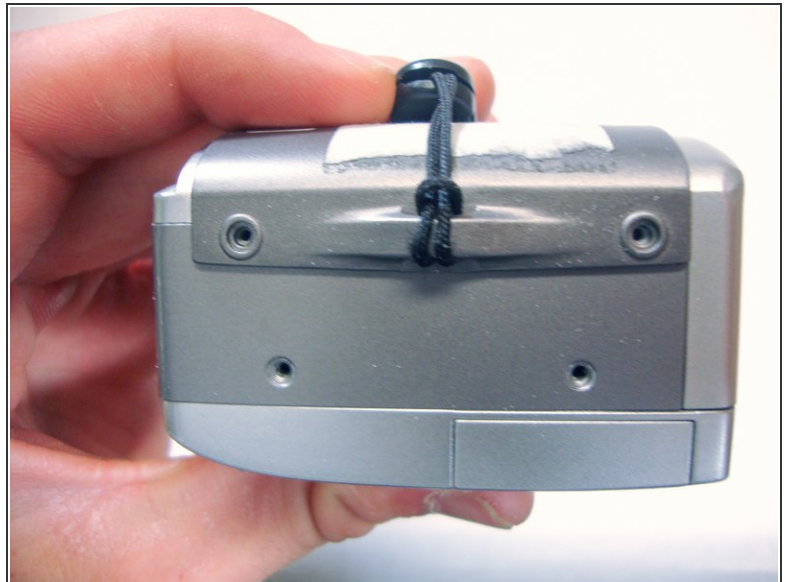
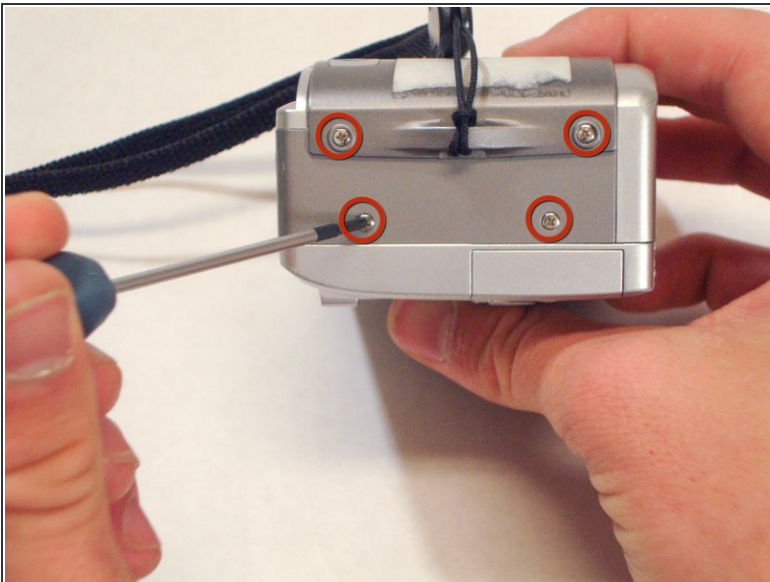
- Unless otherwise stated, use a phillips #00 screwdriver to remove screws.
- Remove the two 4.70mm screws in the bottom of the plastic casing.

Step 5



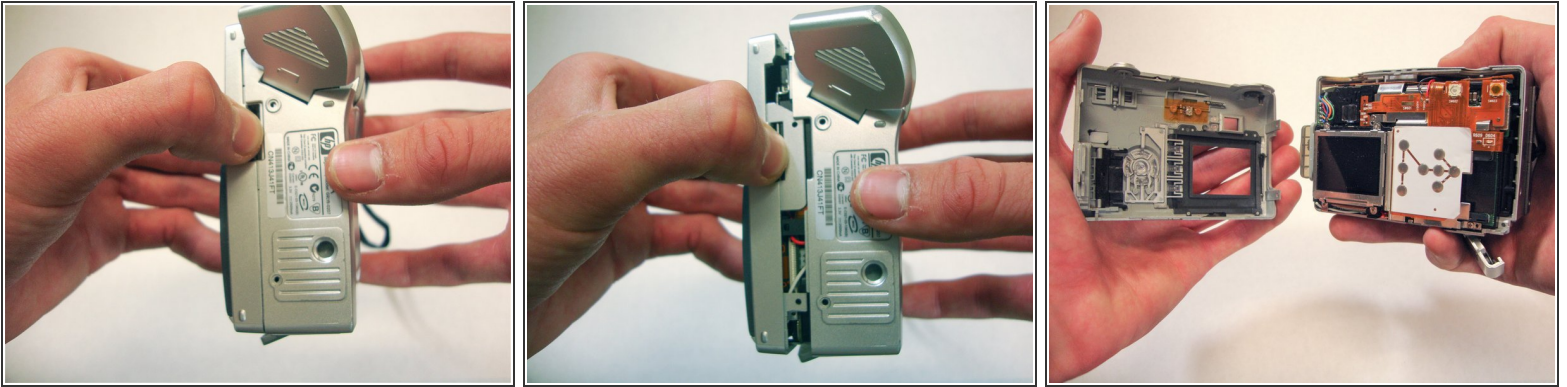
- Remove the four 4.70mm screws in the left side of the camera.

Step 6



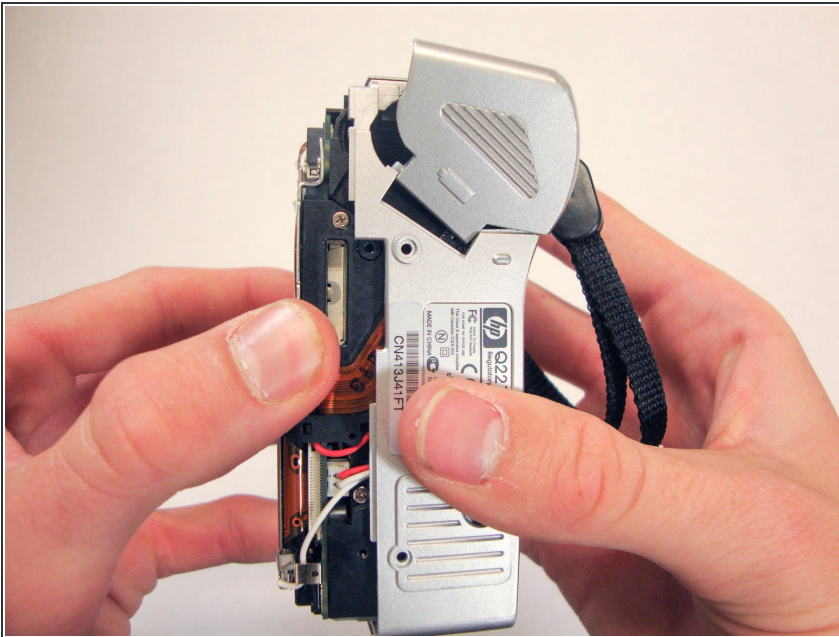
- Now on the side with the strap, remove the other four 4.70mm screws.

Step 7



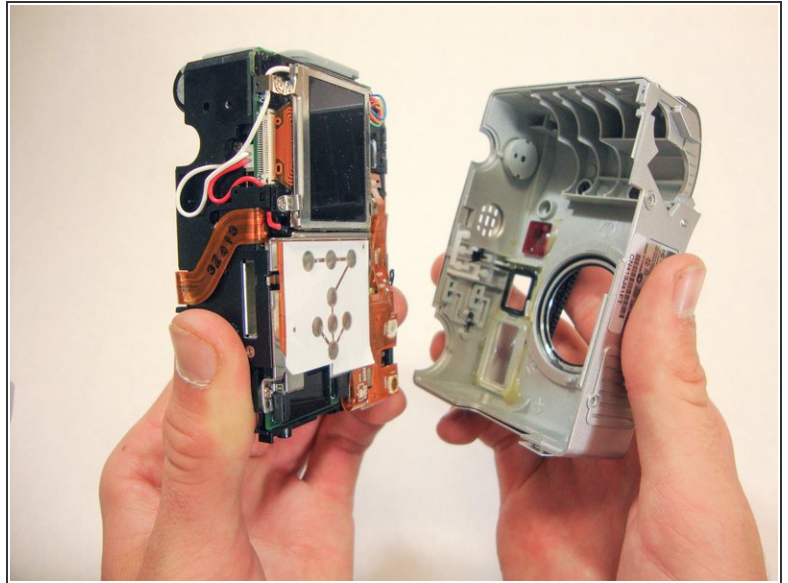
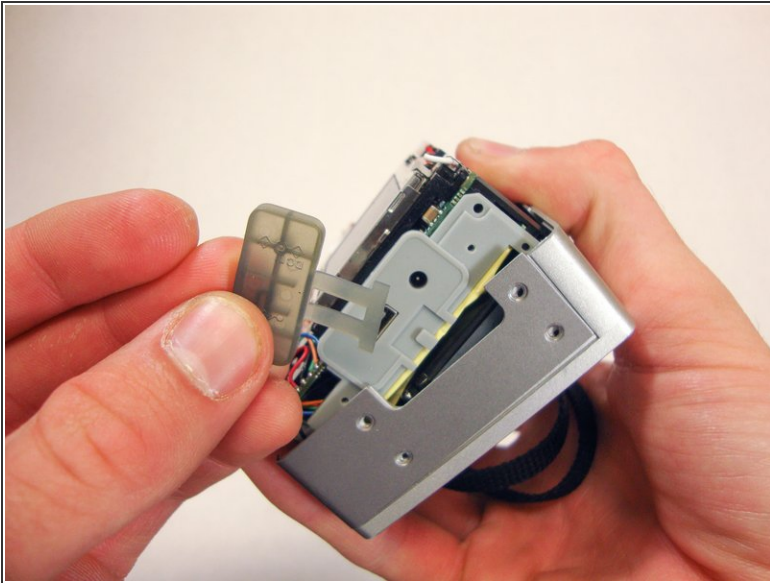
- Use your thumbs to pry the case apart.
- ⓘ It is easiest to pry to case apart if your start at the bottom.
- ⓘ The case should come apart with minimal effort. If it doesn't, you can use a tool such as a Spudger or Plastic Opening tool.



Step 8



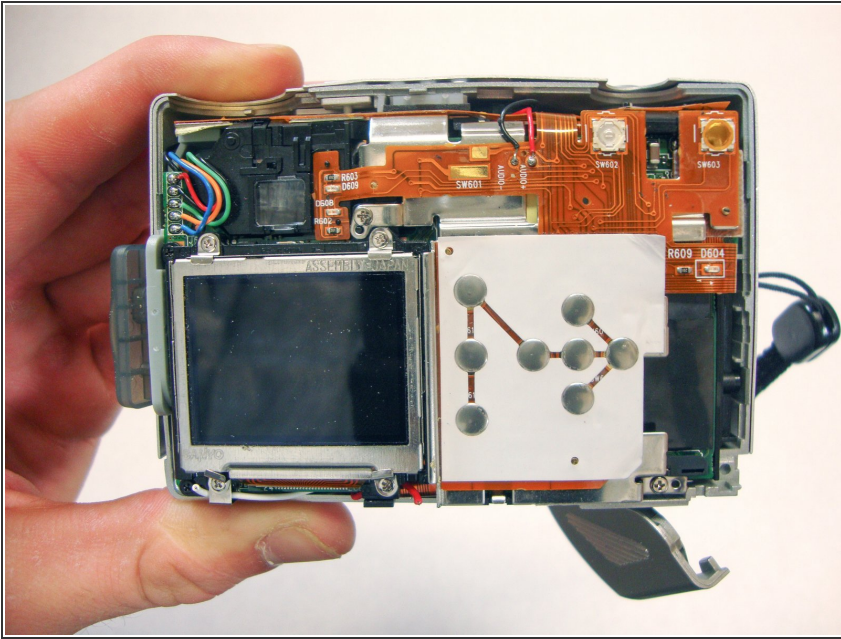
- ⚠ This step requires a significant amount of force.
- Pull the bottom half of the inner camera out of case about half an inch. This may be difficult and force is necessary.

Step 9



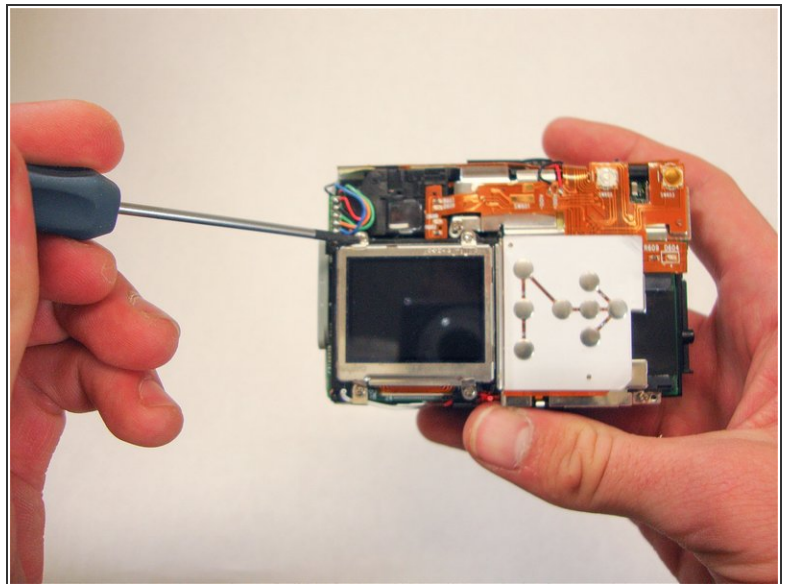
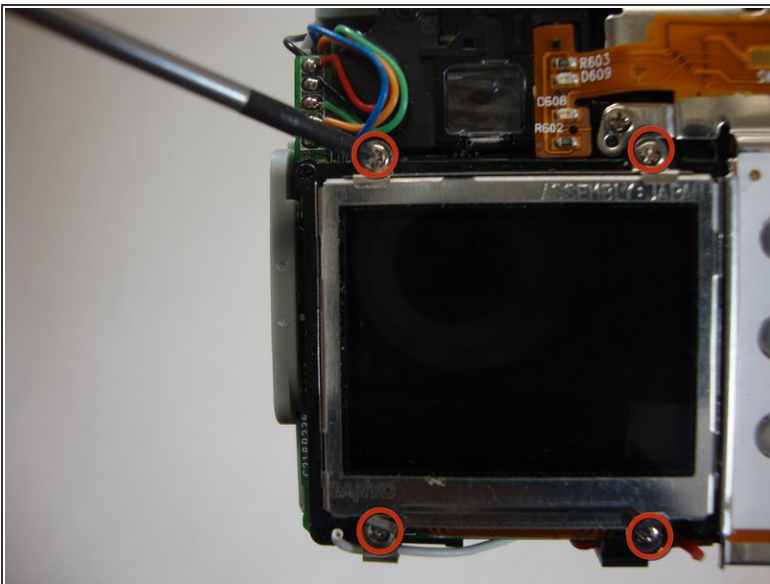
-  While pulling the camera out of the case, note the small soft plastic cover on the side of the camera. This cover will detach from the rest of the device.
- Once the bottom of the inner camera is pulled out about an inch and a half, pull the device out completely.
-  When completely removing the device from the case, use a firm grasp with your hands for stability and control.

Step 10 — LCD Screen



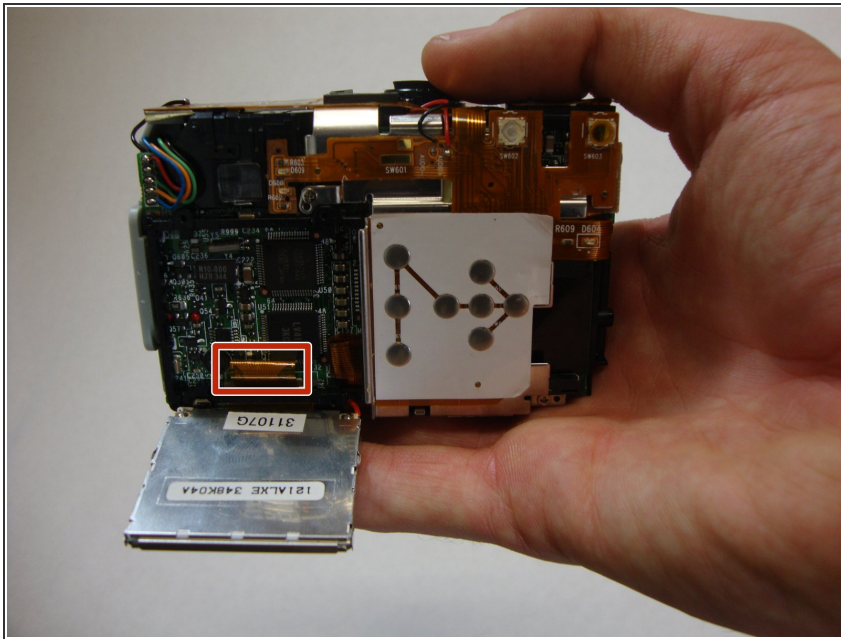
- Turn the camera so that the LCD screen is facing you.
- ★ If case is still on, remove it by following the Plastic Casing Installation Guide found in the previous steps.
- ⓘ You will not be able to complete this guide without removing the casing completely.

Step 11



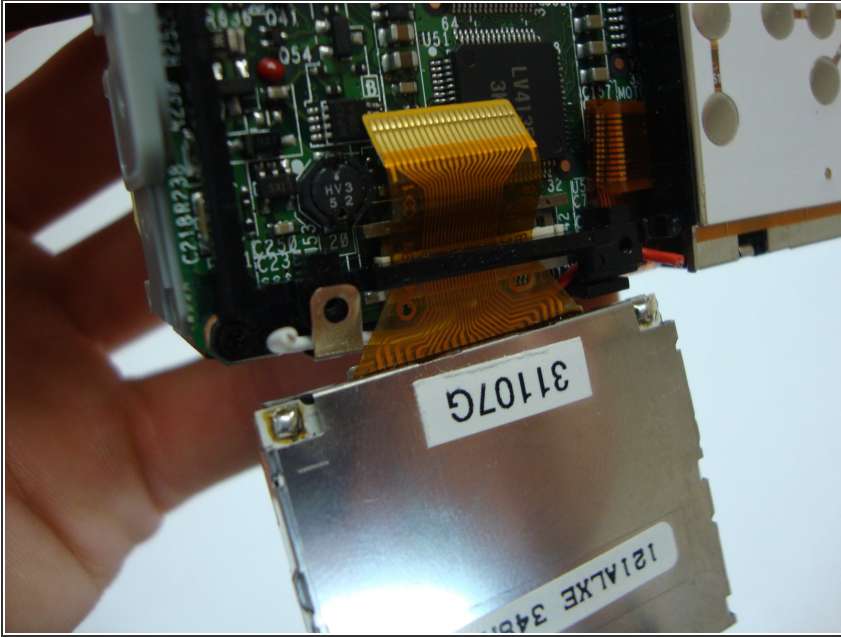
- Remove the four 4.40mm screws that hold the LCD screen in place to the frame.

Step 12



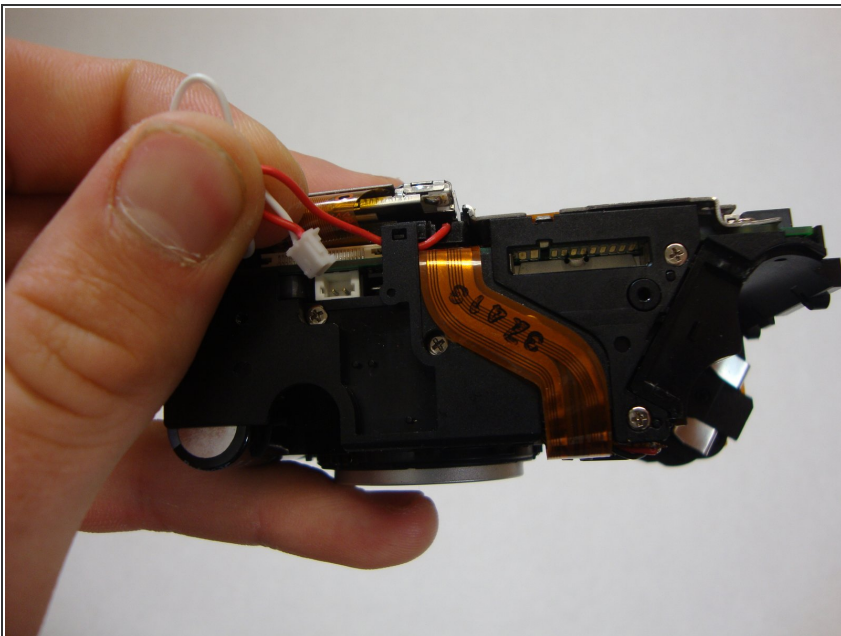
- Allow the LCD screen to flip down. This will expose the electric strip connecting the screen to the camera.

Step 13



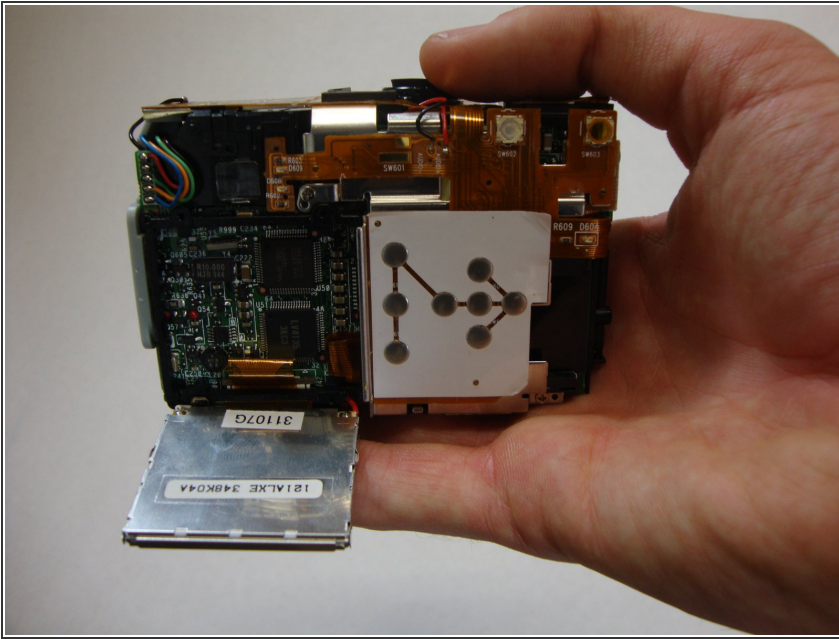
- ① Look for where the yellow electric strip is attached to the camera. There is a plastic grey bar and a white base holding this strip in place.
- Push the grey bar away from the white base. This will release the yellow electric strip and free the LCD screen from the camera.

Step 14



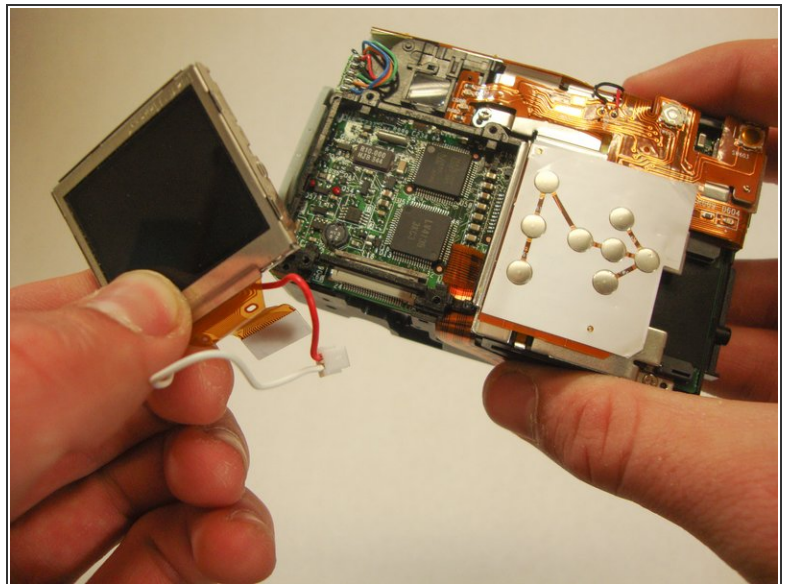
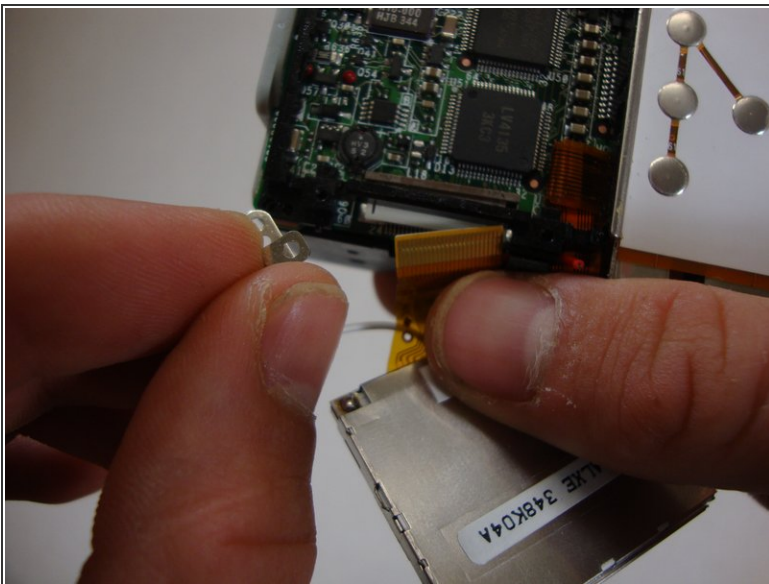
- Unplug the connected red and white wires. They will come out with the small white casing.

Step 15



- Flip camera so that the lens is facing away from you. You should be looking at the LCD screen.

Step 16



- Remove bottom left LCD mounting frame screw.
- Remove LCD screen from camera. Screen should come loose after screw is removed. Make sure electric strip comes out with screen.

To reassemble your device, follow these instructions in reverse order.