



HP Photosmart D110a Motherboard Replacement

If there is a problem with the motherboard in your printer, this guide will explain how to replace that motherboard.

Written By: Tim Wise



INTRODUCTION

It is recommended to attempt this guide with 2 or more people

Required Tools

- T-9 Screwdriver
- Needle-Nose Pliers



TOOLS:

- [T9 Torx Screwdriver](#) (1)
 - [Large Needle Nose Pliers](#) (1)
-

Step 1 — Printer Hood Assembly



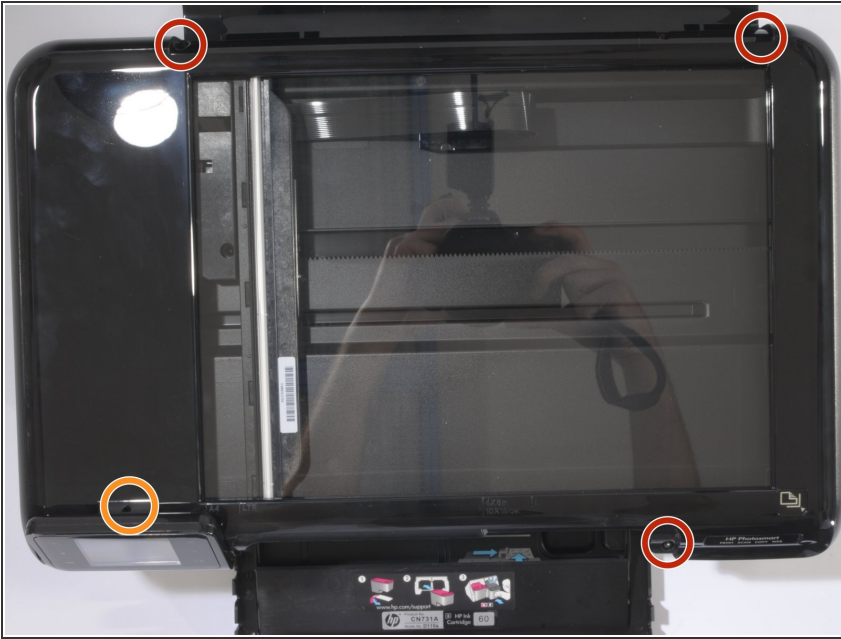
- First, begin by removing the printer's hood.
- Open the printer's mouth by simply pulling down on it; there are 2 mouth pieces that need to be pulled down.
- Adjust the flap covering the scanner upward, as shown.

Step 2



- Remove the flap for the scanner. The flap is attached with two clips that can be dislodged by pulling lightly away from the printer.

Step 3



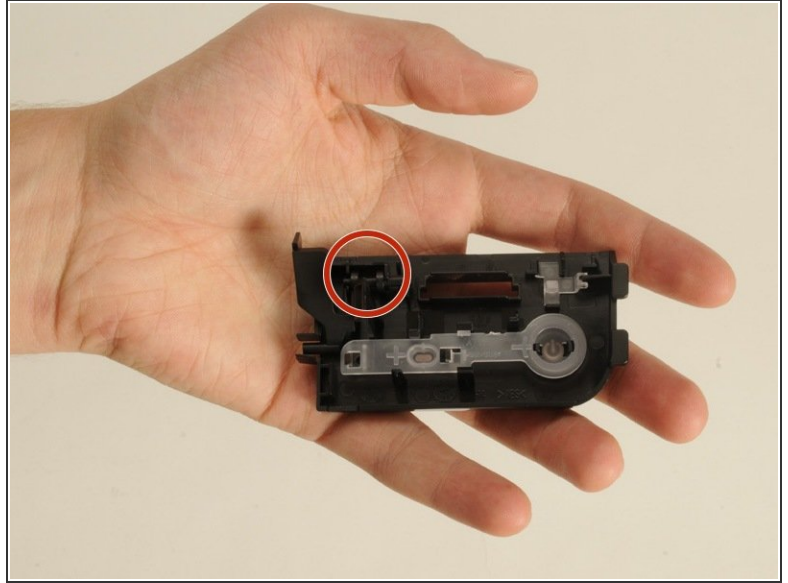
- Locate the three screws on top of the printer.
- The orange circle shows a fourth screw located behind the power panel. Directions to remove this screw are in a later step.

Step 4



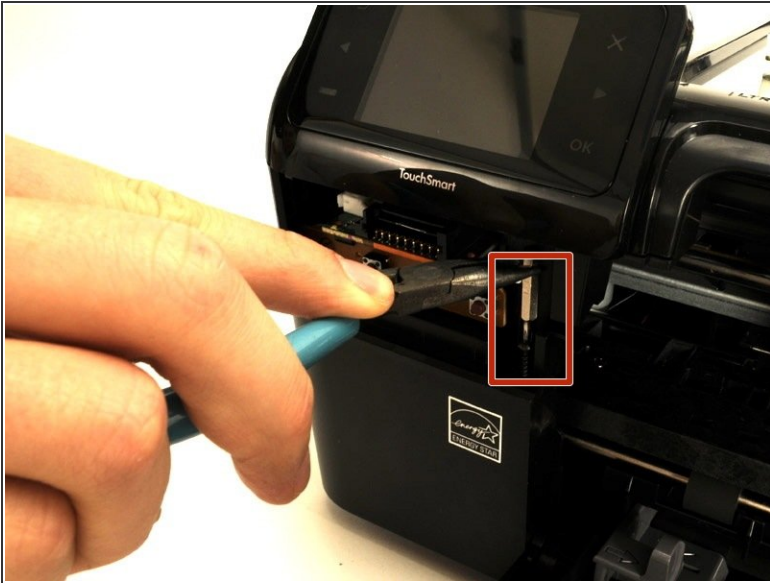
- Remove the three screws from the top of the printer with a T-9 screwdriver as shown.

Step 5



- To access and remove the fourth and final screw attaching the hood, the panel for the power button must be removed as follows:
- Reach into the mouth of the printer and press on the small clip behind the power button. This allows the panel of the power button to be removed.
- ⓘ A picture of the power button panel removed is provided to show the location of the clip that needs to be pressed.
- After pressing the clip, pull out the power button panel by pulling from right to left.

Step 6

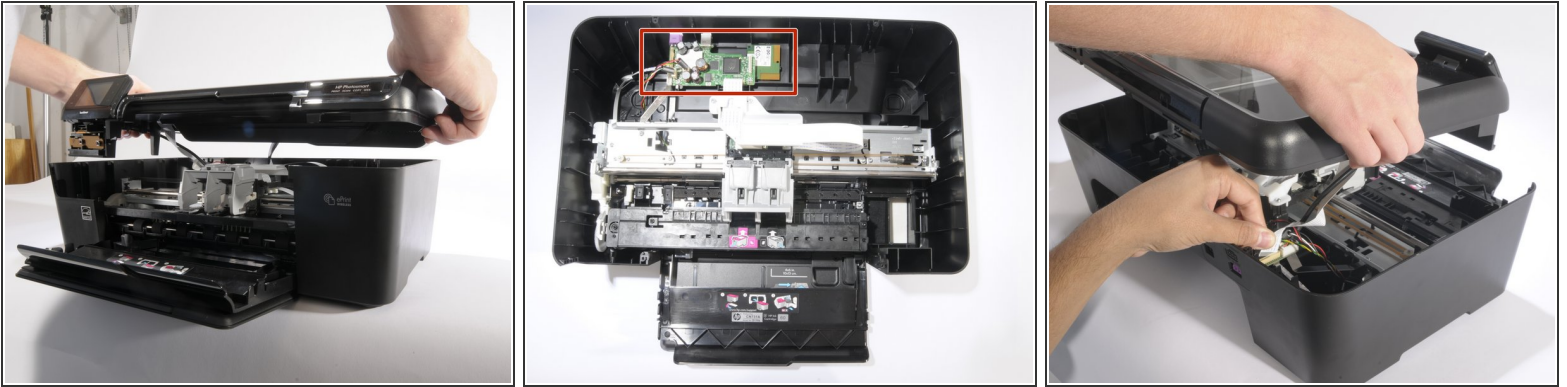


- Remove the exposed screw that was covered by the power button panel.

⚠ Do not try and torque the screw from an angle. This will ruin the screw's head, and make it even more difficult to remove the screw. Only remove it as already described.

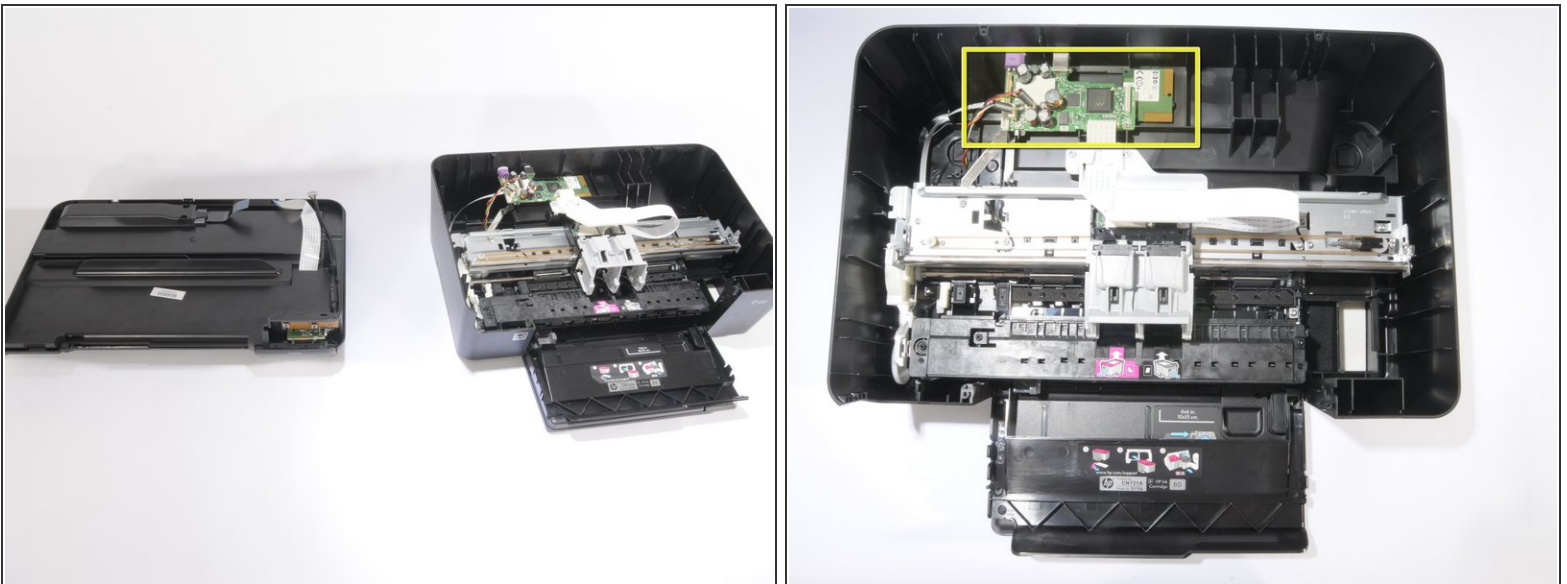
i This screw is placed awkwardly. We found holding a T9 bit in a pair of needle nose pliers gave us enough leverage to pull it up.

Step 7



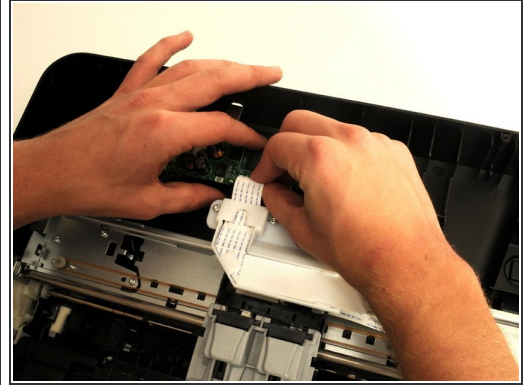
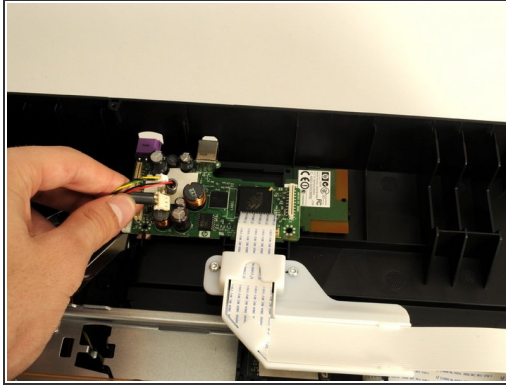
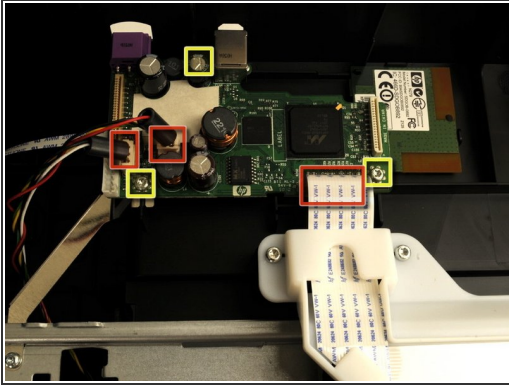
- This step is easier with two people. Carefully have one person lift the hood of the printer 2-3 inches above where it was resting.
- Remove the ribbon cables and wires attaching the motherboard (the only green PCB board) to the hood by gently pulling upward on them.
- When all three cables are removed, lift the hood away from the printer and set it aside.

Step 8 — Motherboard



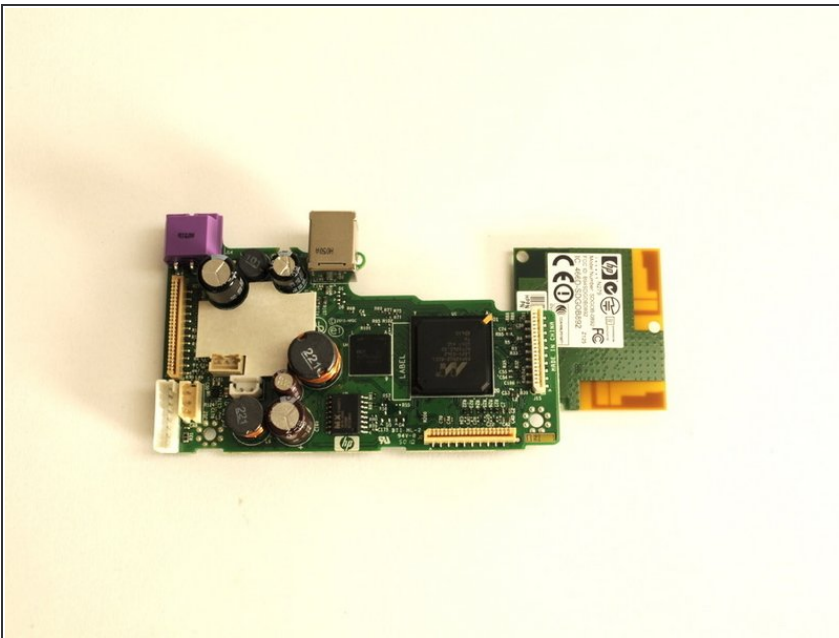
- i** Once the printer hood is detached, the motherboard is visible and accessible. It is the only green PCB board within the printer.

Step 9



- Remove the three screws with a T-9 screwdriver. (One screw is behind a small black capacitor. Its location is indicated by a yellow box as are the two uncovered screws.)
- Remove the cables and ribbon cables by pulling them free. They attach the motherboard to the printer and are indicated by red boxes.

Step 10



- Now, gently lift the mother board vertically from the printer and set it aside.
- ⓘ When reattaching the cables and ribbon cable, make sure they go in their corresponding slots as previously pictured: they will not fit in other slots.

To reassemble your device, follow these instructions in reverse order.