



HP Photosmart Premium e-All-in-One C310a Power Button Replacement

This guide demonstrates how to replace the power button.

Written By: Andrew Schaub



INTRODUCTION

This guide will show you how to replace the circuit board located behind the power button that handles powering on the printer.

TOOLS:

- [T7 Torx Screwdriver](#) (1)
 - [T10 Torx Security Bit Screwdriver](#) (1)
-

Step 1 — Remove the Mounting Screws




- Tilt the touchscreen as far forward as possible.
- Remove the two (2) 15mm T-10 Torx screws from behind the screen.

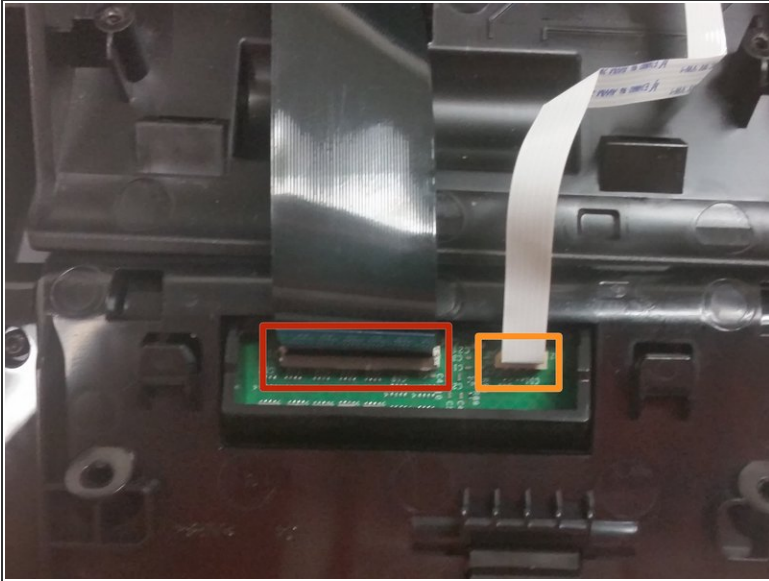
Step 2 — Separate the Touchpad from the Printer



- Once the screws are removed, apply a steady upward force on the front bottom corners of the screen until it pops loose.

 Be careful to not move the screen too far from the printer before disconnecting it. You may damage the connections within the printer if you do.

Step 3 — Disconnect the Ribbon Cables



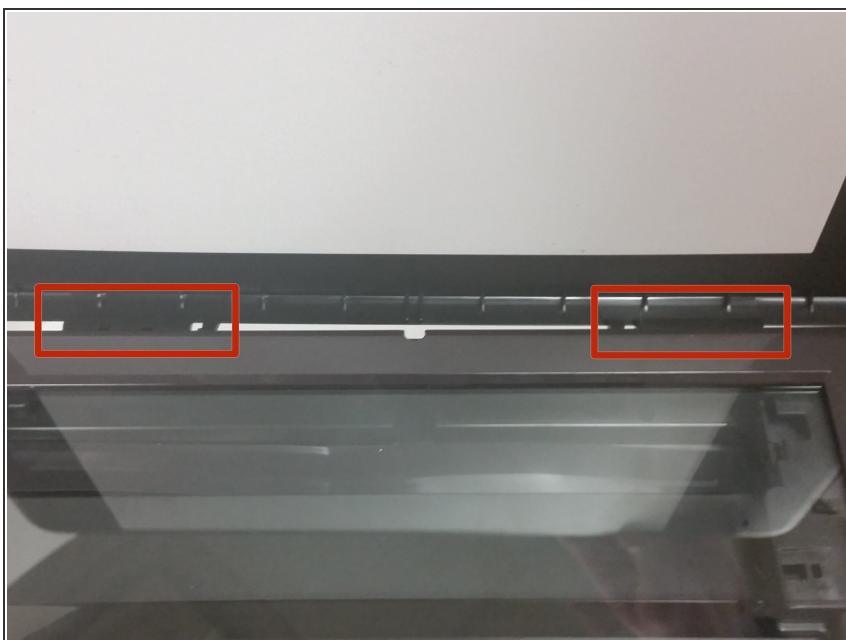
- Before removing the ribbon cable, flip the black bar up to unlock the cable. Grab the blue area of the cable near the connector and pull straight out of the socket.
 - Pull this plug straight out of the socket slowly.
- ⚠ Be careful when pulling out these ribbon cables. If you pull too hard or don't unlock the cable, you can damage the connection.

Step 4 — Remove the Touchpad



- Once the ribbon cables have been removed, your screen should be free of the printer.

Step 5 — Remove the Scanning Cover



- Lift the scanning cover until it is vertical.
- Press on the cover near the two hinges.

Step 6 — Remove the Side Plates



- Pull the plate from the middle away from the printer until the tab is free.
- Slide the plate towards the back of the printer until the latches are released.
- Remove both side plates before you proceed.

Step 7 — Remove the Scanner Surface



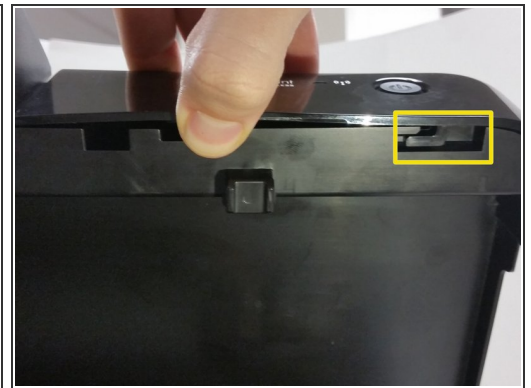
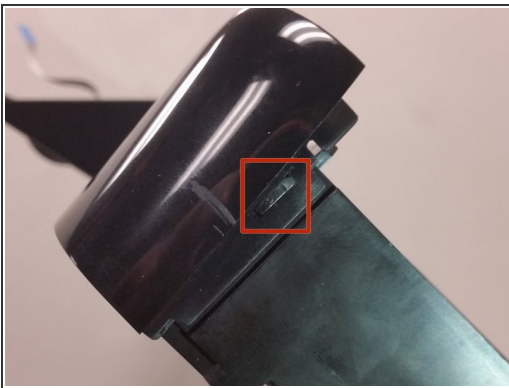
- Remove the five (5) 15mm T10 Torx screws.
- Lift the scanner surface from the front where the screen was to remove it.
- ⓘ If you are only trying to clean the glass, stop here and follow the instructions in reverse order to reassemble your device.

Step 8 — Remove the Glass from the Scanner Surface



- ⚠ Make sure you are careful with the glass, as it can cut you if it breaks.
- Apply force to the glass near where it is joined with the scanner surface.
- Once the glass is removed, insert your new replacement glass and make sure it is firmly attached to the scanner surface.

Step 9 — Remove the Cover Plate



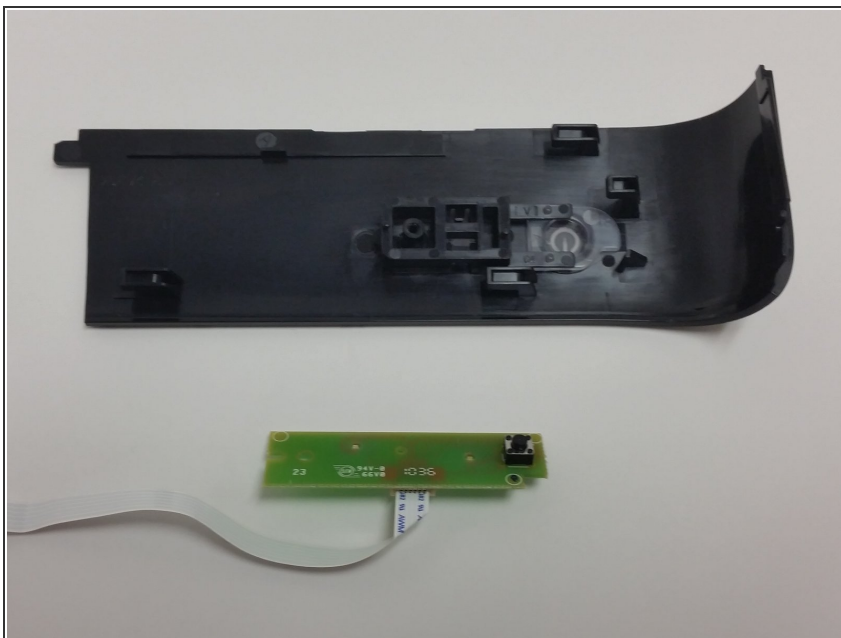
- Pull the side of the cover plate away from the printer until it is off of the locking peg.
- Pull the middle of the cover plate away from the printer until the tab in the middle is free.
- Slide the cover plate to the right to disengage the latch.

Step 10 — Remove the Mounting Screw



- Remove the 7mm T7 Torx screw holding the board to the cover panel.

Step 11 — Remove the Power Button Board



- Lift the power button board off the holding peg.
- The power button board is now free from the cover panel.

To reassemble your device, follow these instructions in reverse order.