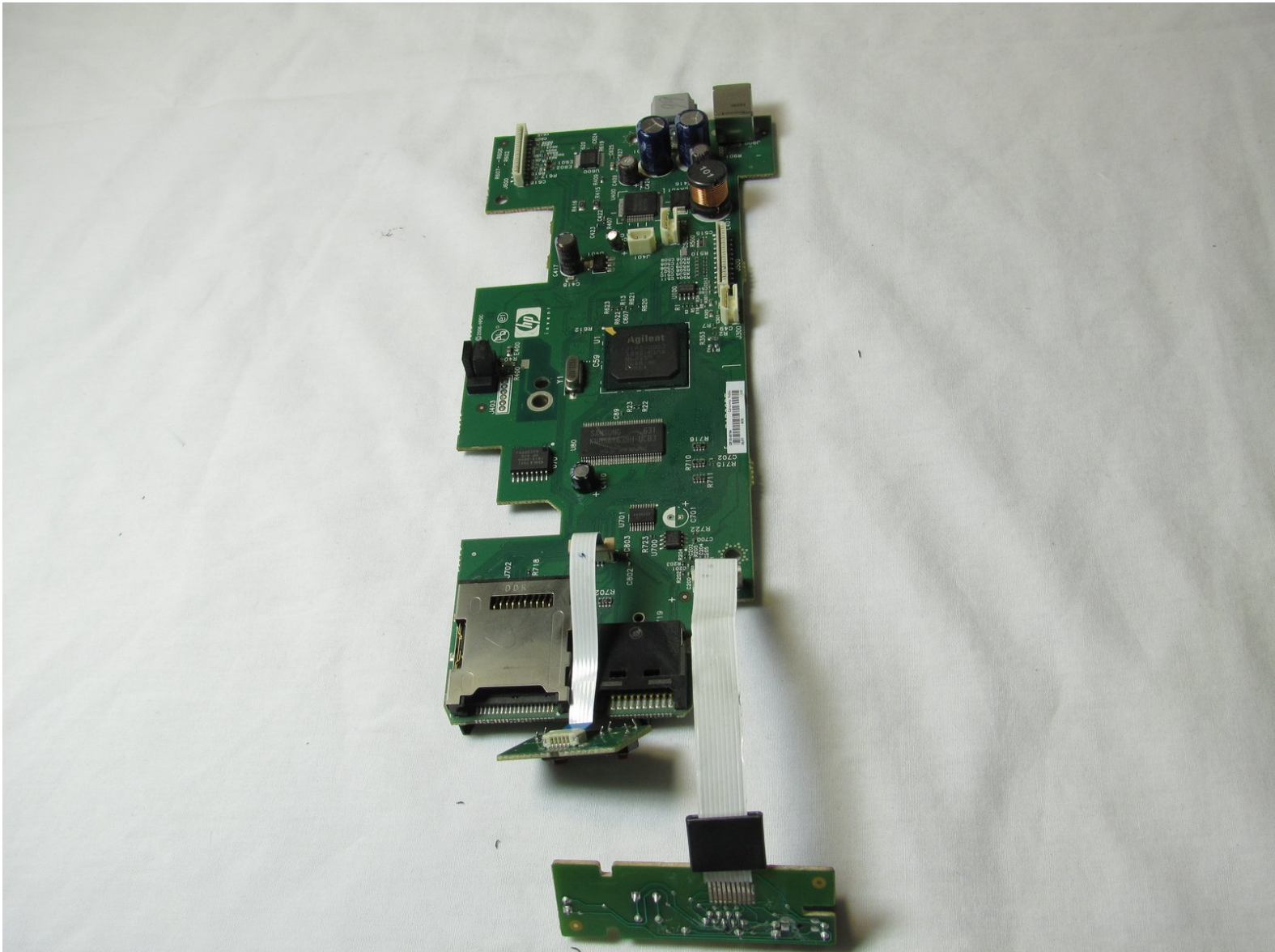




HP Photosmart c3180 Main Circuit Board Replacement

Replacing a faulty main circuit board.

Written By: Jim





TOOLS:

- [Spudger](#) (1)
 - [T10 Torx Screwdriver](#) (1)
-

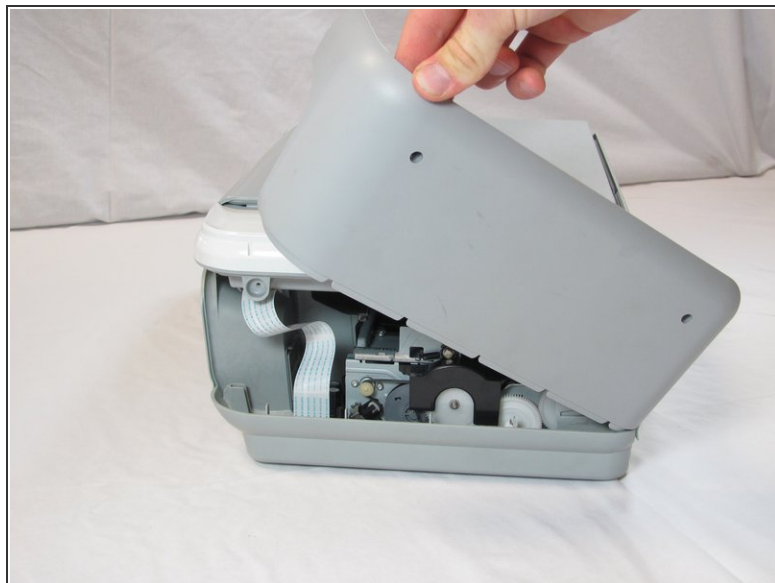
Step 1 — Top Panel



Before disassembling your printer, be sure that the printer has been unplugged.

- Rotate the printer 90 degrees counter clockwise so that the side panel next to control panel is facing you.
- Remove the two T10 12mm Torx screws from the left side panel.

Step 2



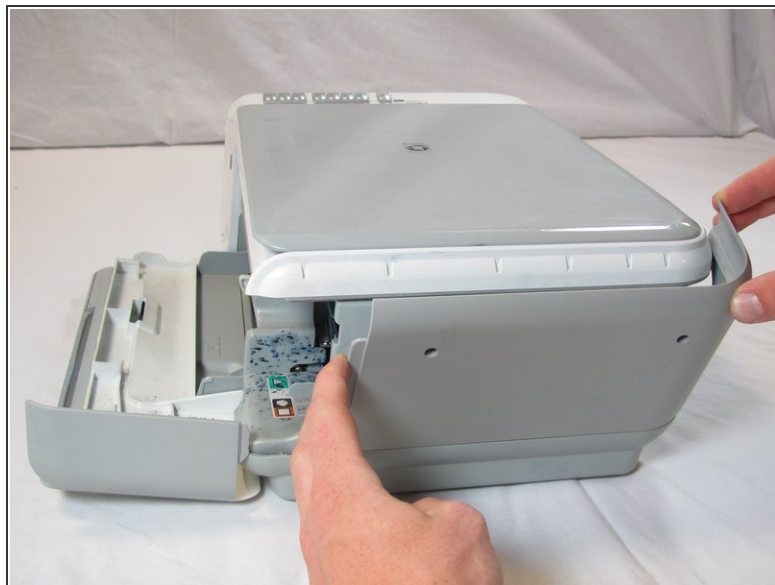
- Firmly pull the the back of the side panel until it separates from the body of the printer.
- Rotate the side panel upwards while pulling it towards yourself to remove the panel.

Step 3



- Rotate the printer 90 degrees clockwise.
- Grasp the paper tray and rotate it down.
- Insert your fingers into the slot in the printer door and pull to rotate the gate down.

Step 4



- Rotate the printer 90 degrees clockwise.
- Remove the two T10 12 mm Torx screws.
- Grasp both sides of the side panel and pull it forward to remove the panel.

Step 5



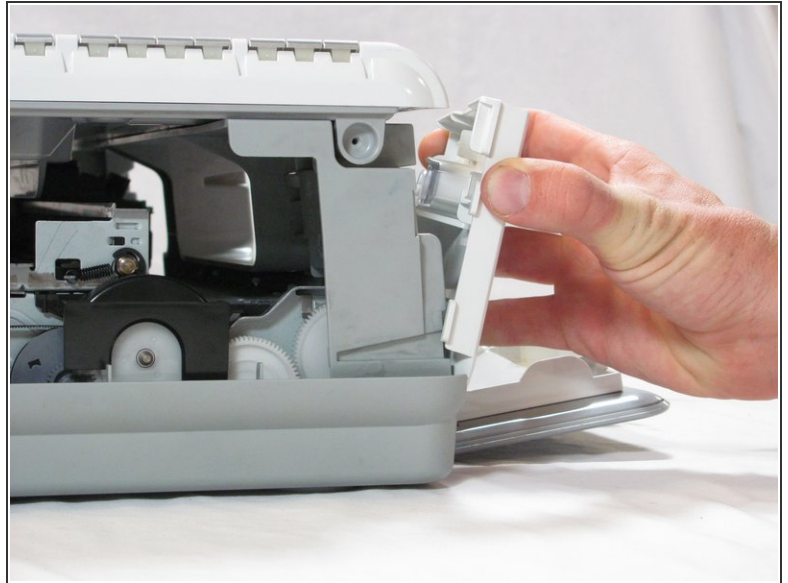
- Rotate the printer 90 degrees counter clockwise.
- Lift the scanner lid to expose the scanner glass.

Step 6



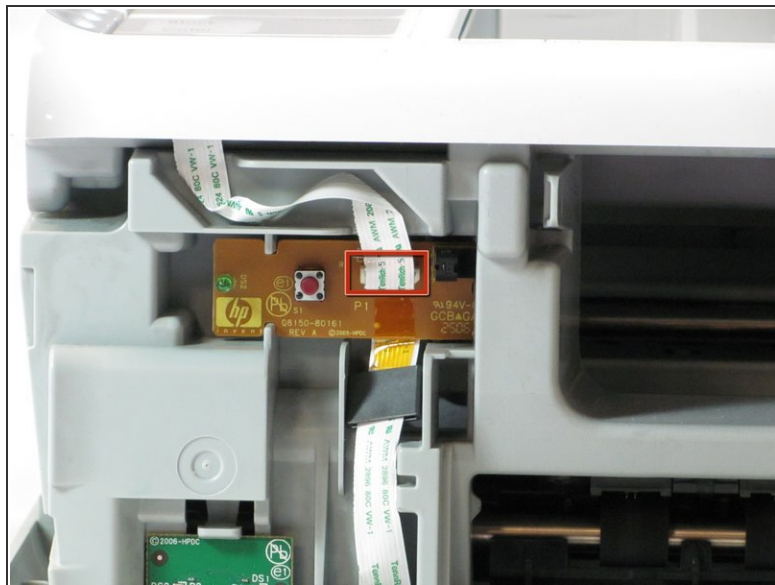
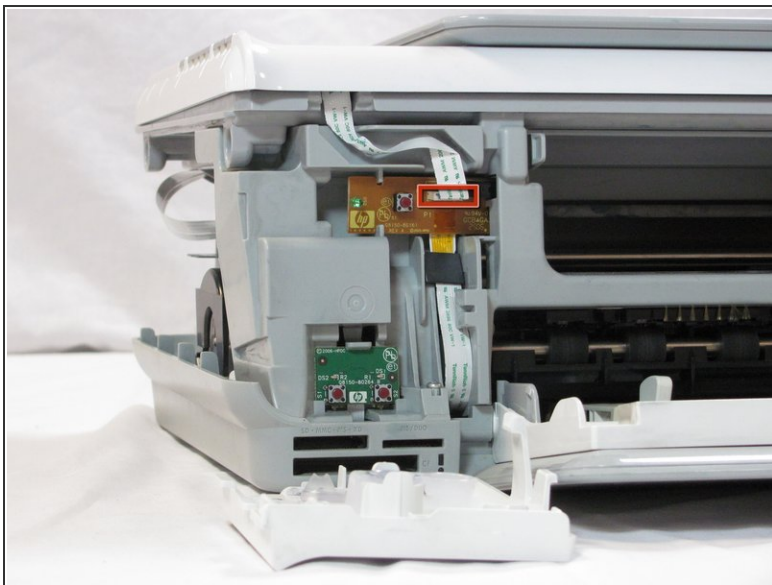
- Remove the two T10 12 mm Torx screws.
- ⚠ Do not attempt to lift the top panel off the printer yet because it is still connected to the printer body by a cable.

Step 7



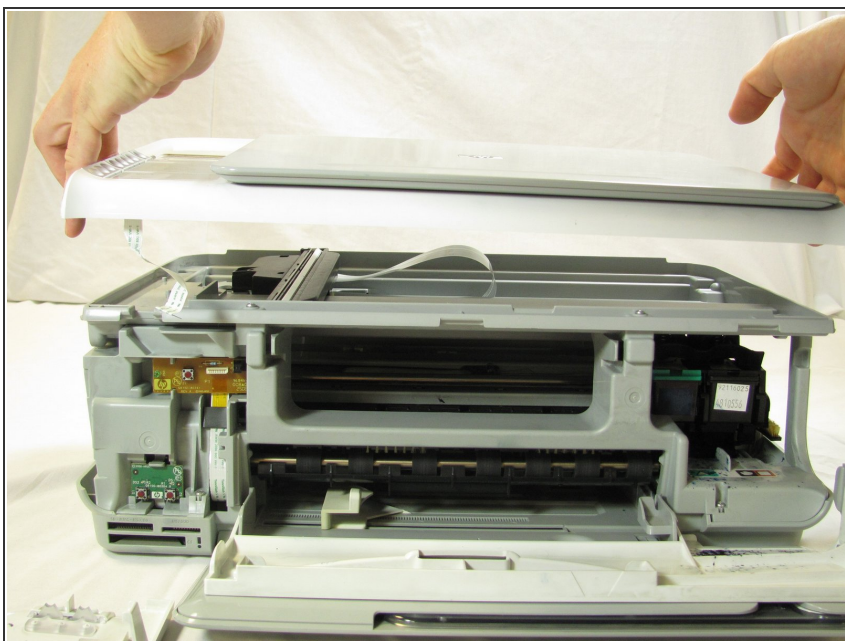
- Rotate the printer 90 degrees counter clockwise.
- Inside the printer is a small white tab. Press it inward with a spudger until a pop is heard.
- Remove the front panel by grasping its front and pulling away from the printer.

Step 8



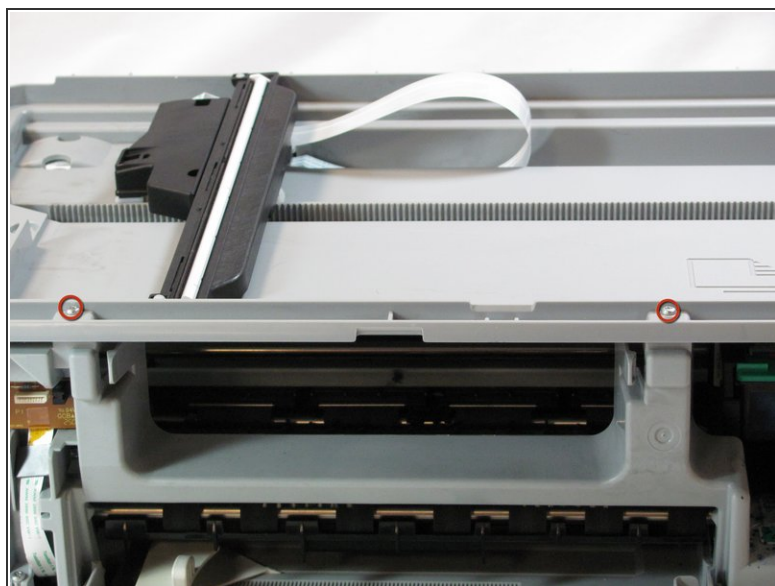
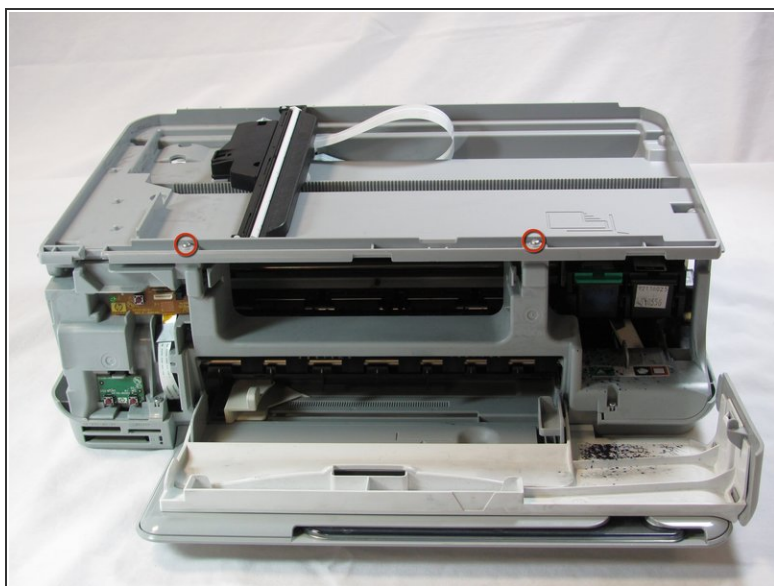
- Rotate the printer 90 degrees clockwise.
- Remove the cable connecting the top panel of the printer to the power button assembly.

Step 9



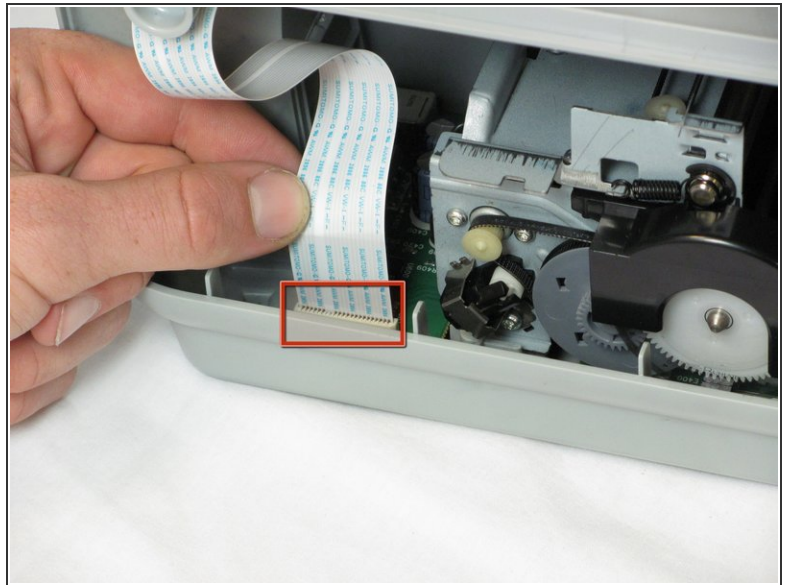
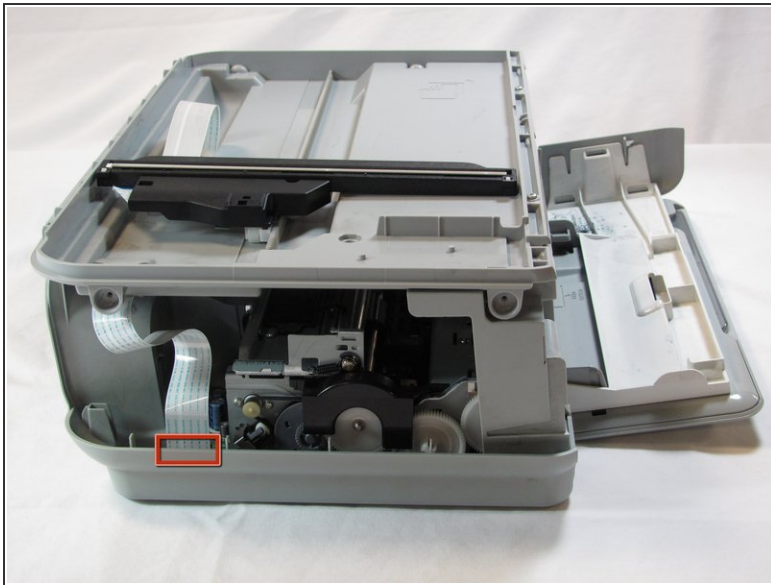
- Carefully lift the top panel of the printer away from the printer body.

Step 10 — Disassembling HP Photosmart c3180 Ink Cartridge Track



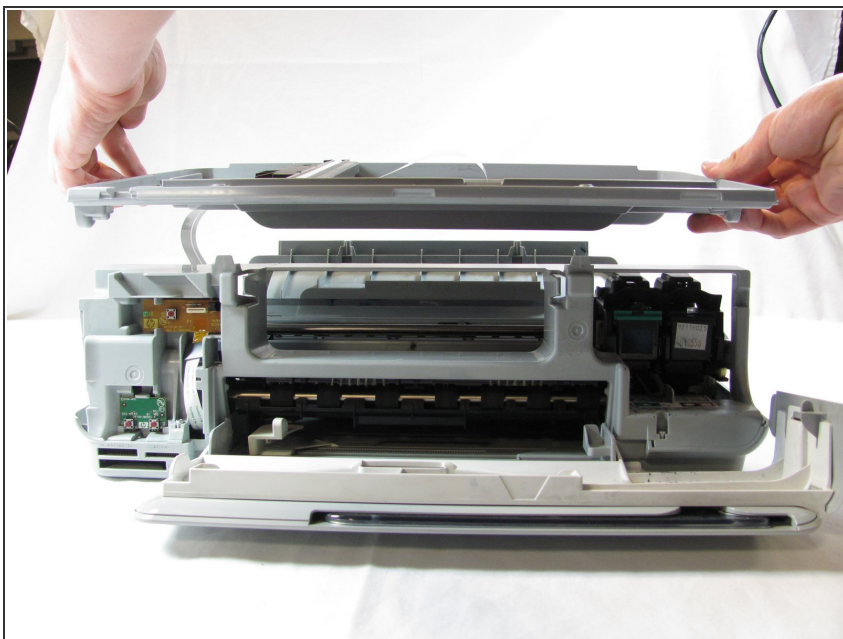
- Set aside the top panel of the printer.
- Remove the two T10 12 mm Torx screws from the top front of the printer

Step 11



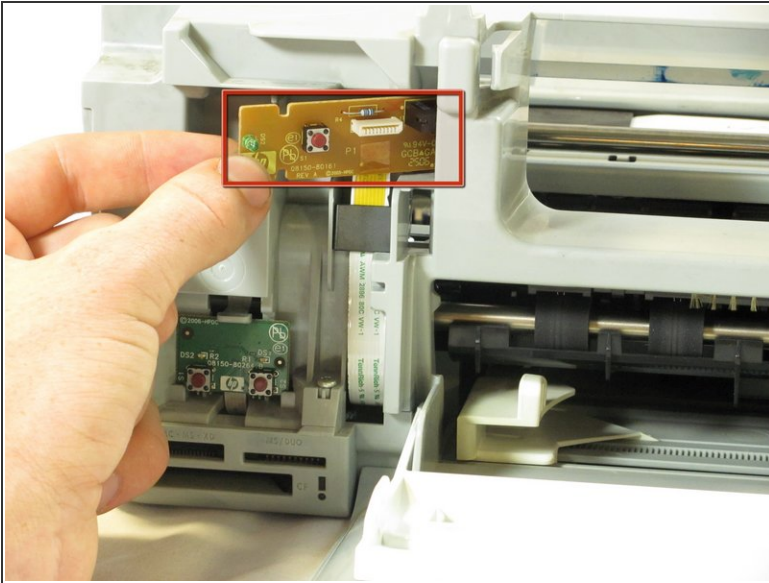
- Rotate the Printer 90 degrees counter clockwise.
 - Remove the scanner cable from the main circuit board.
- i** Grasp the bottom of the cable and pull straight up. Do not wiggle it from side to side or twist it as this can damage the connection.

Step 12



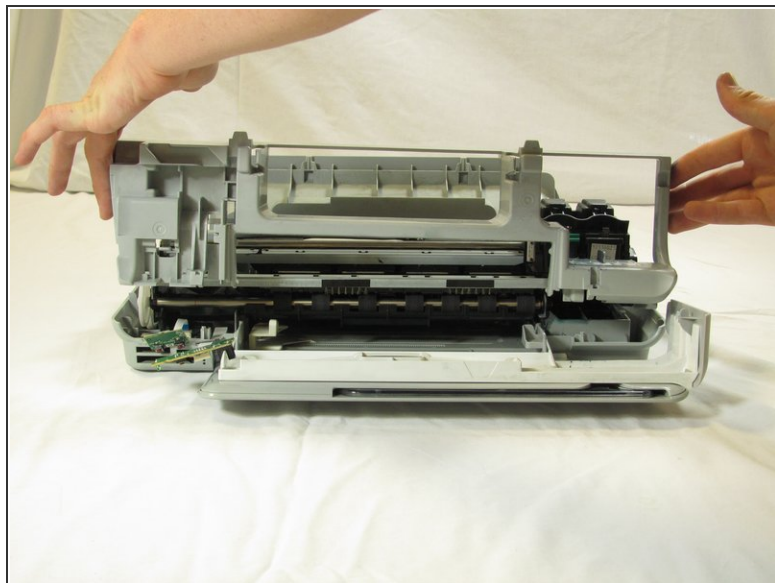
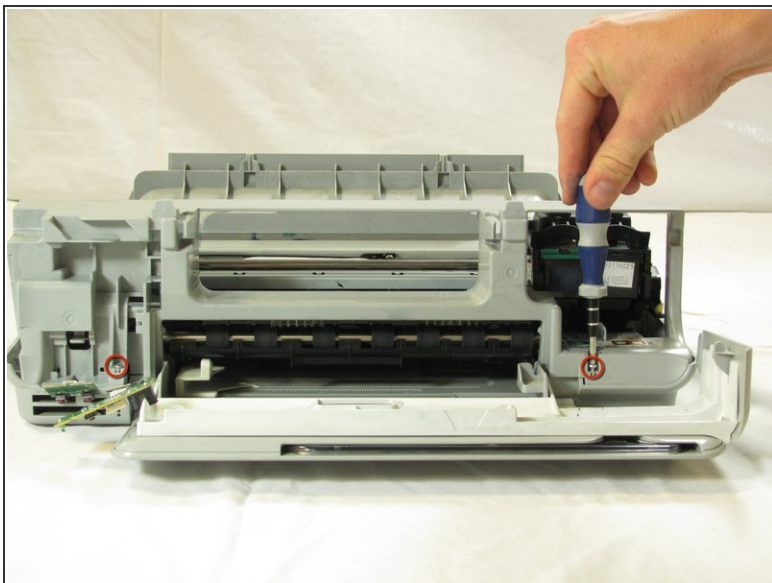
- Rotate the printer 90 degrees clockwise.
- Using both hands, lift the scanner tray from the body of the printer.

Step 13



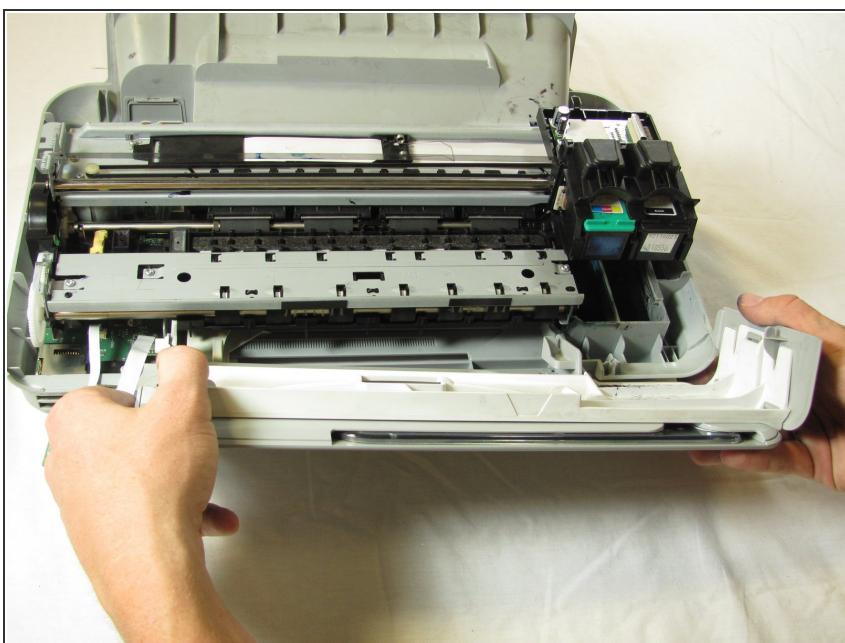
- Remove the power button circuit board from the support frame by pinching the left side, and pulling forward and to the left simultaneously.
 - Push up on the tab holding the secondary control circuit board with the spudger and pull it forward to remove it.
- ⚠ Be careful not to pull too hard on the cable connecting the power button control circuit board and the secondary control circuit board to the main circuit board

Step 14



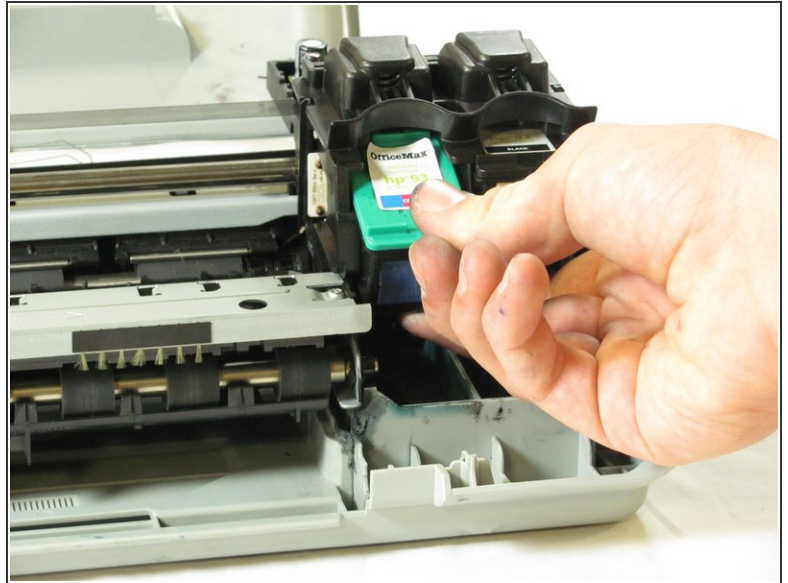
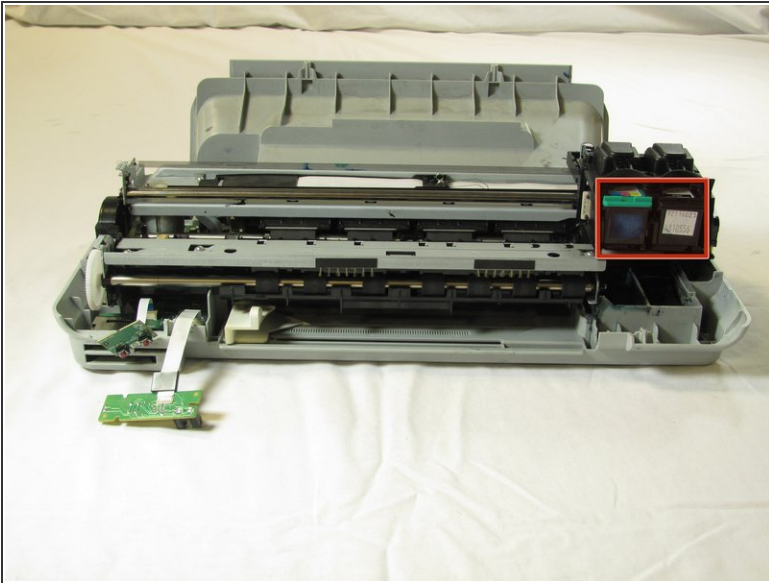
- Remove the two T10 12 mm Torx screws.
- Lift the support frame off of the printer body with both hands.

Step 15



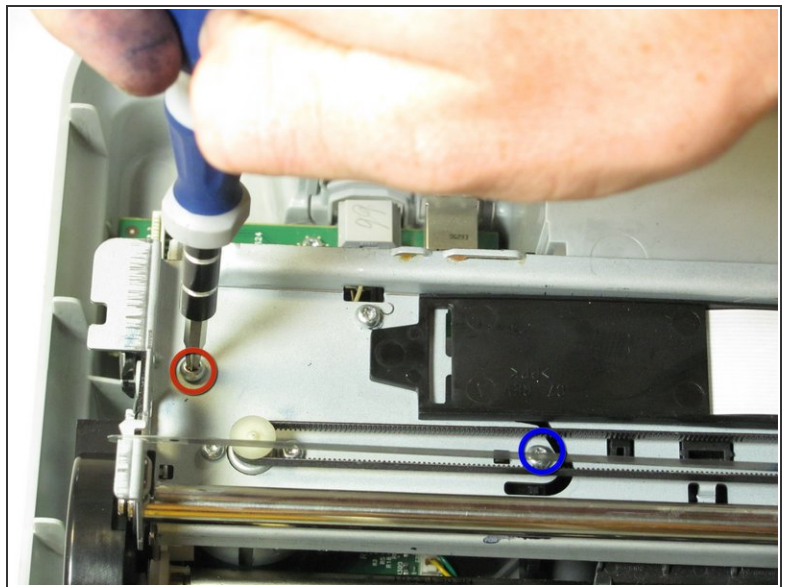
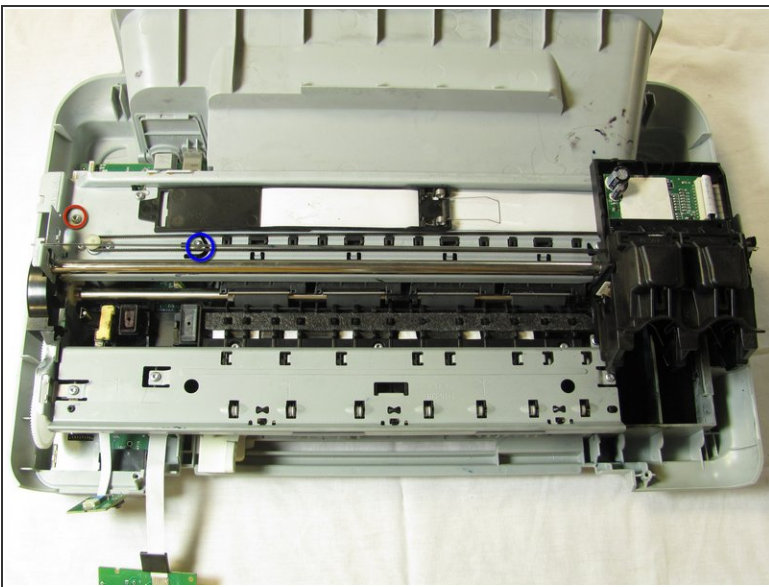
- Remove the printer door and paper tray by putting them in the closed position and not laying flat then rotating them upwards lift the left side up.

Step 16



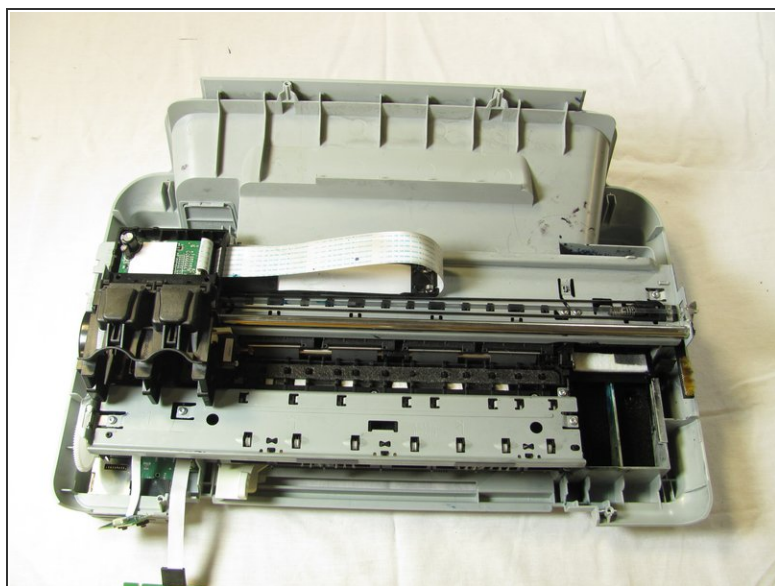
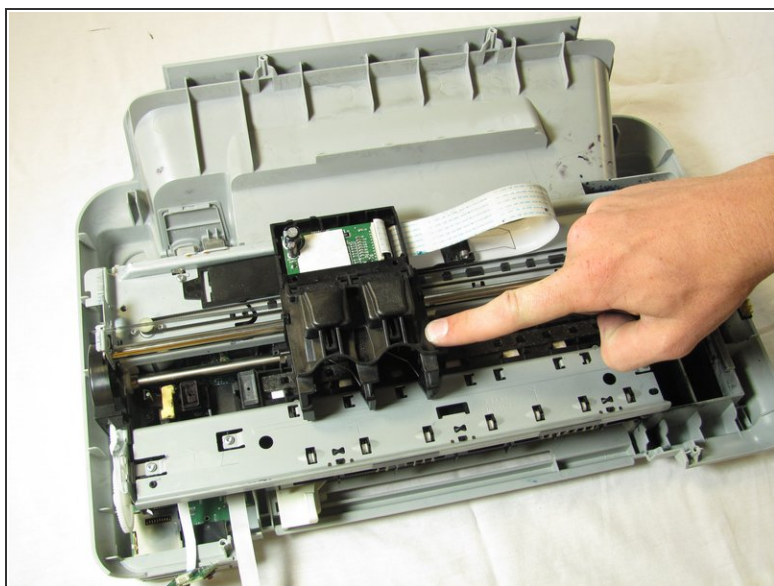
- Remove both of the ink cartridges by grabbing the front of the ink cartridge and pulling down.
- ⓘ Make sure that the printer carriage is pushed all the way to the right.

Step 17



- Remove the T10 6 mm Torx screw on the left side of the track assembly.
- Remove the T10 12 mm Torx screw on the left side of the track assembly.

Step 18



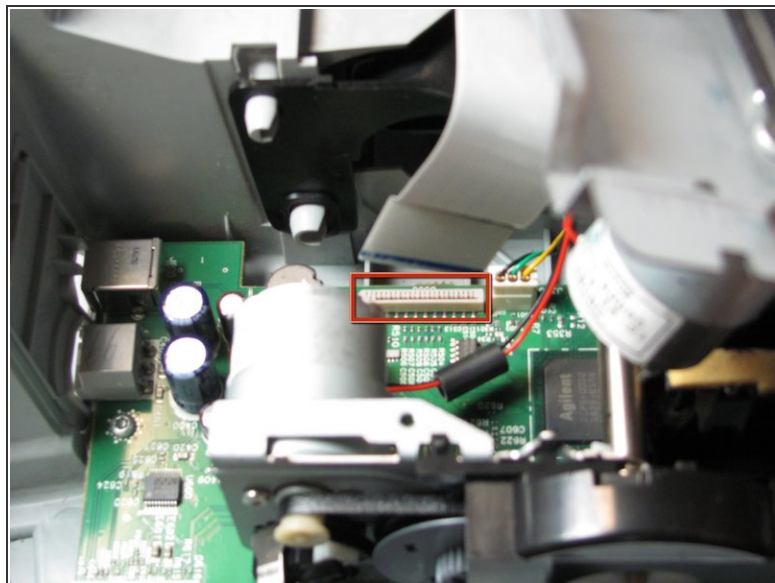
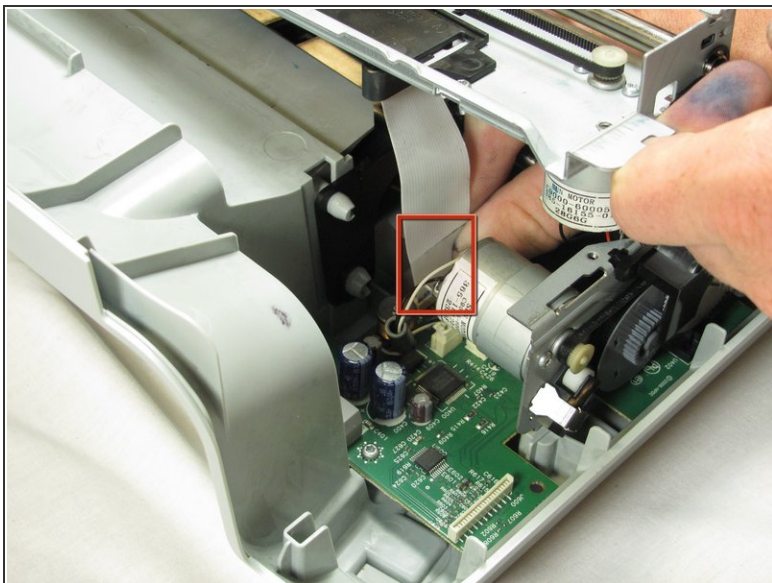
- Gently push the ink cartridge carriage to the left side of the printer.

Step 19



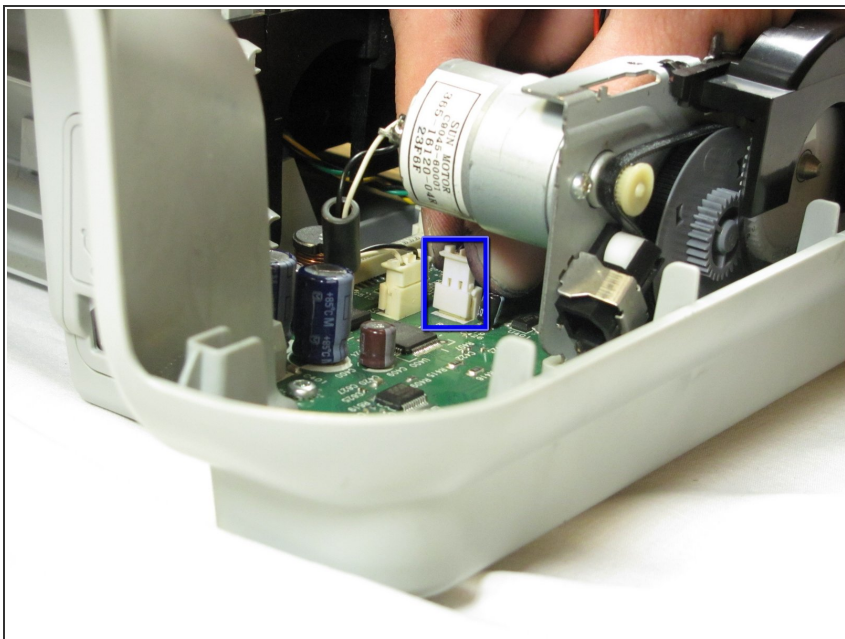
- Remove the two T10 12 mm Torx screws.
- Remove the two T10 6 mm Torx screws.

Step 20



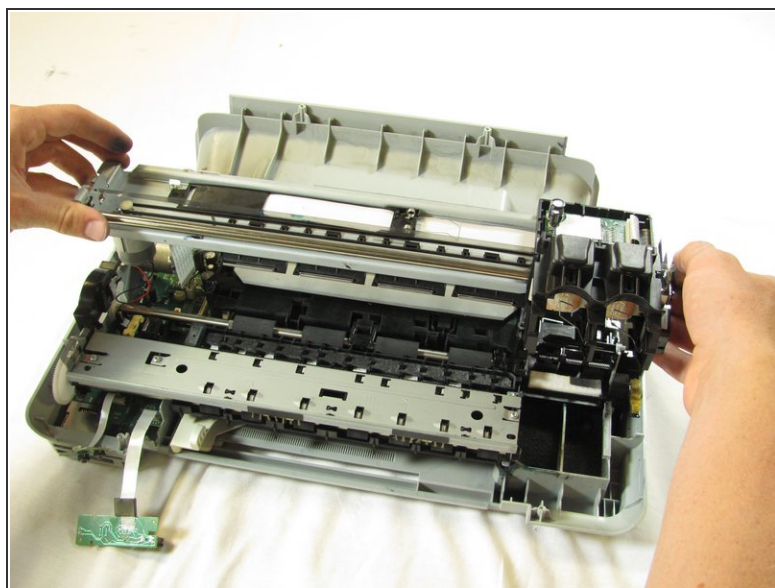
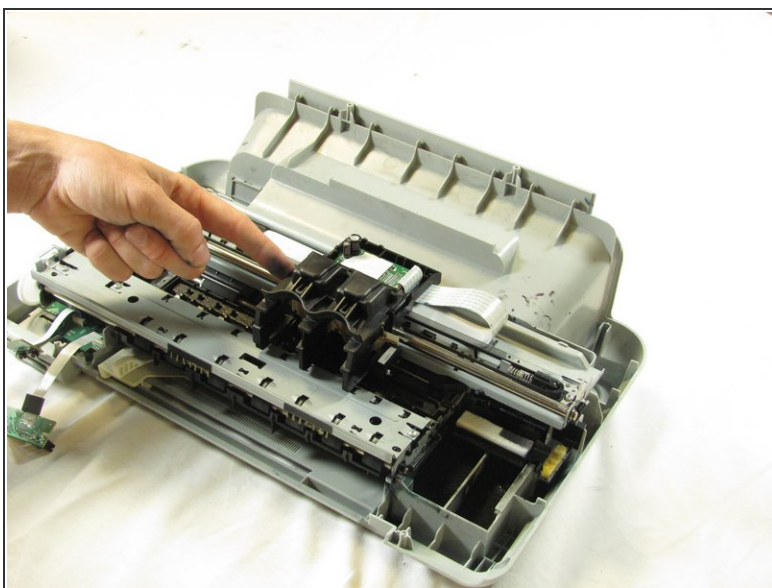
- Rotate the printer 90 degrees counter clockwise.
 - Remove the cable connecting the ink cartridge carriage to the main circuit board.
- ⚠ Pull straight up to free the cable from the main circuit board. Do not twist or wiggle the cable as doing so can damage it.
- ⓘ You may need to lift the carriage up with one hand in order to reach the cable with the free hand as shown.

Step 21



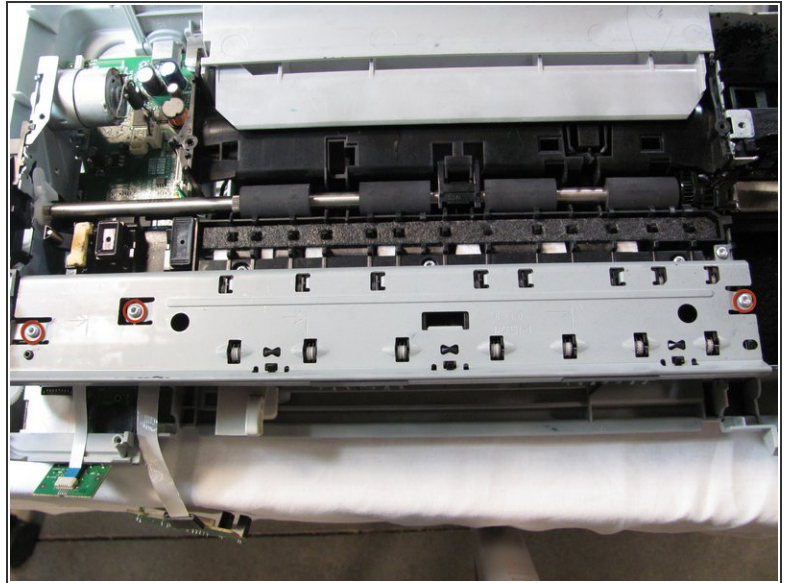
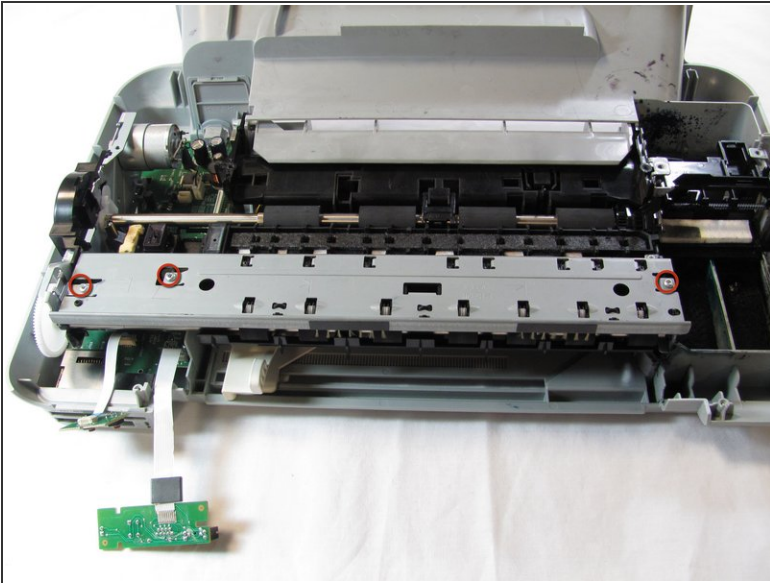
- Carefully remove the connector holding the drive motor wires to the main circuit board.

Step 22



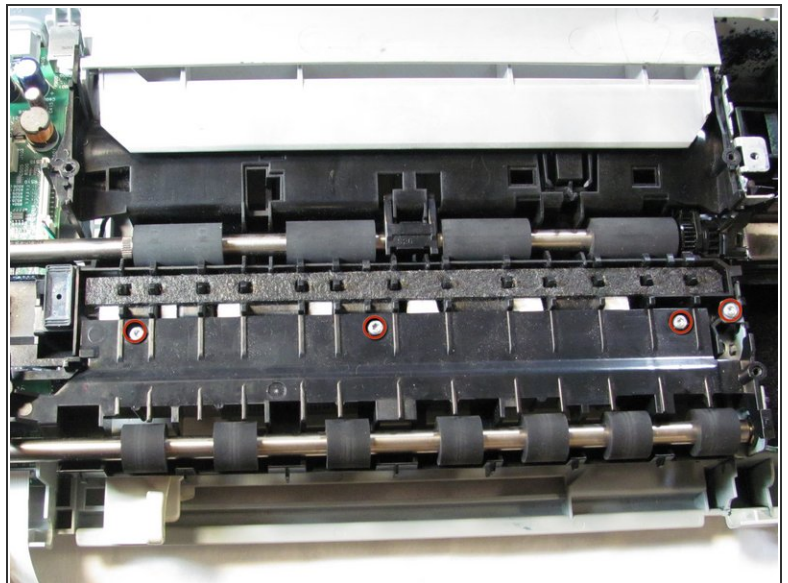
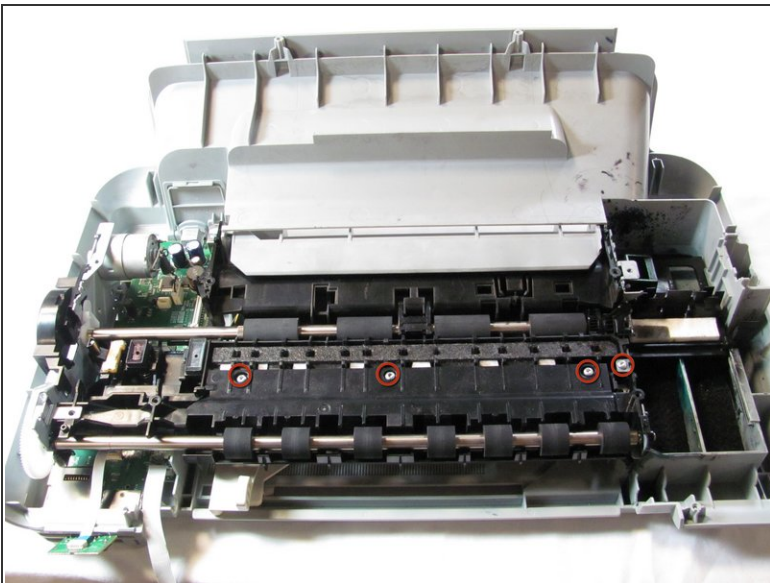
- Slide the ink cartridge carriage all the way to the right side of the printer.
- Using both hands, carefully lift the ink cartridge track off of the main body of the printer.

Step 23 — Disassembling HP Photosmart c3180 Feed Roller Assembly Removal



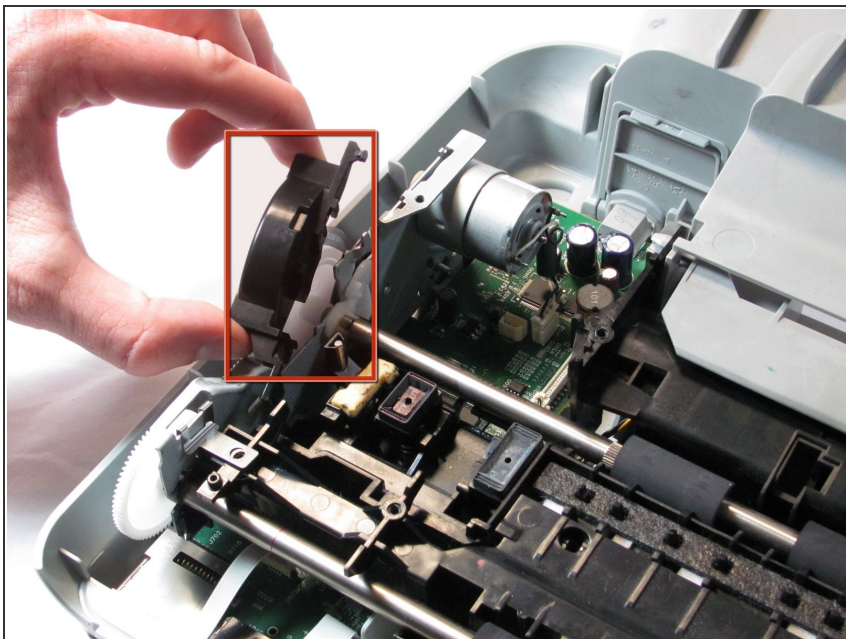
- Set aside the ink cartridge carriage.
- Remove the three T10 12mm Torx screws holding the paper guide to the printer body.
- Lift the paper guide directly up to remove it and set it aside.

Step 24



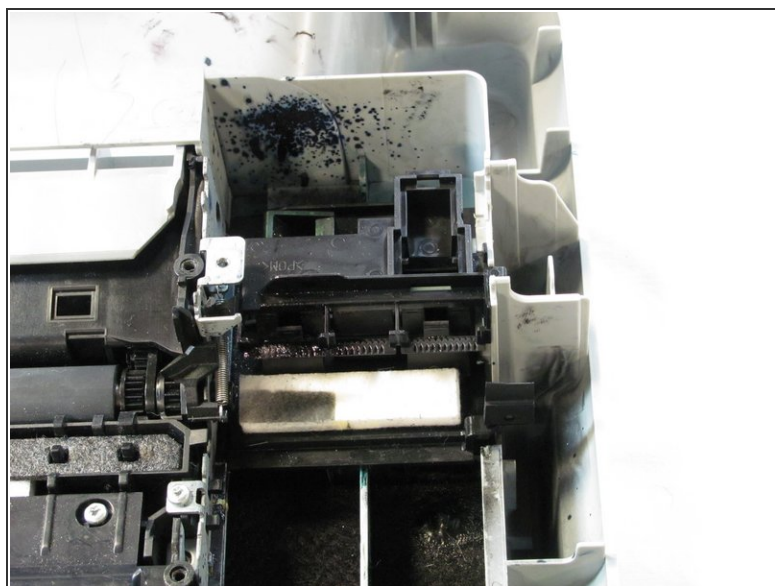
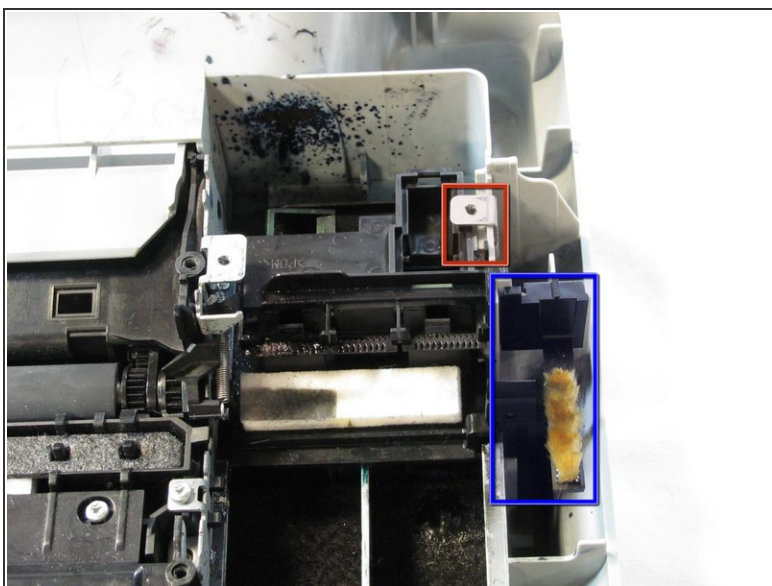
- Remove the four T10 12mm Torx screws from the roller holder.

Step 25



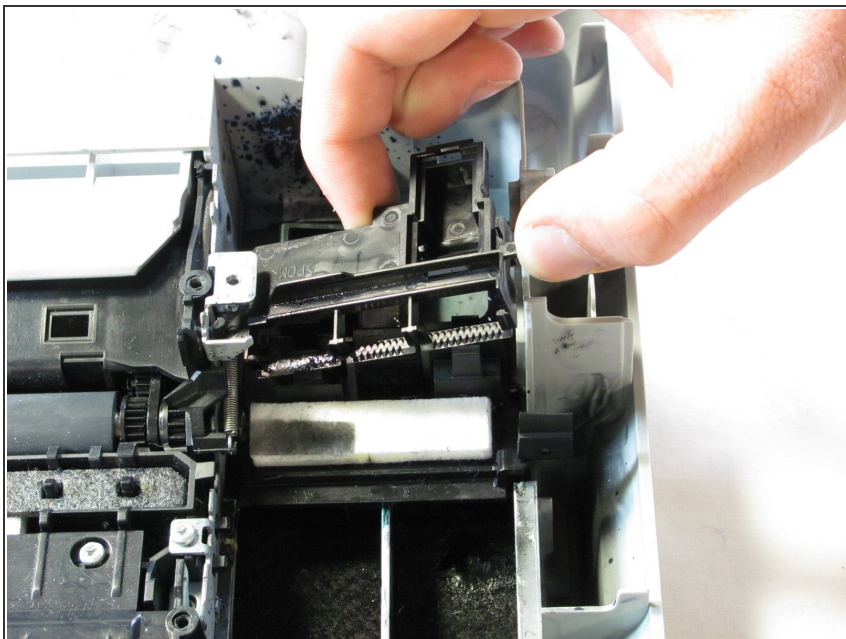
- Remove the plastic gear cover by pulling it away from the printer body and lifting it up.

Step 26



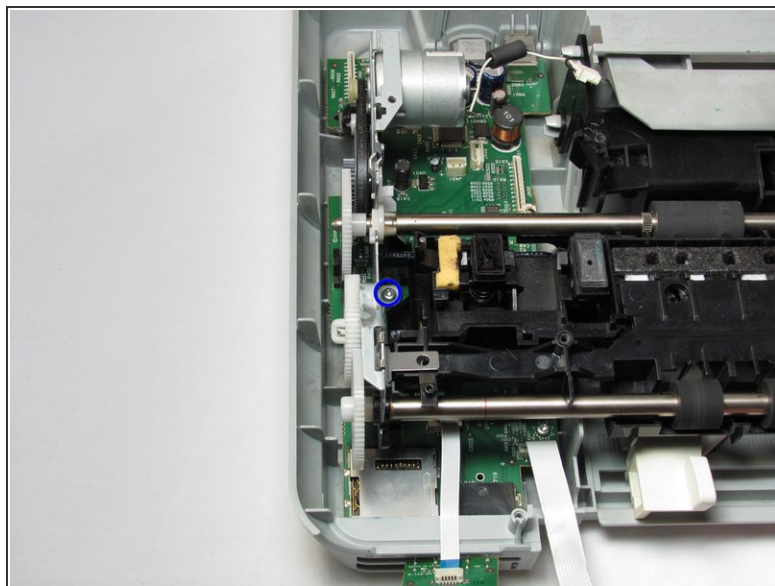
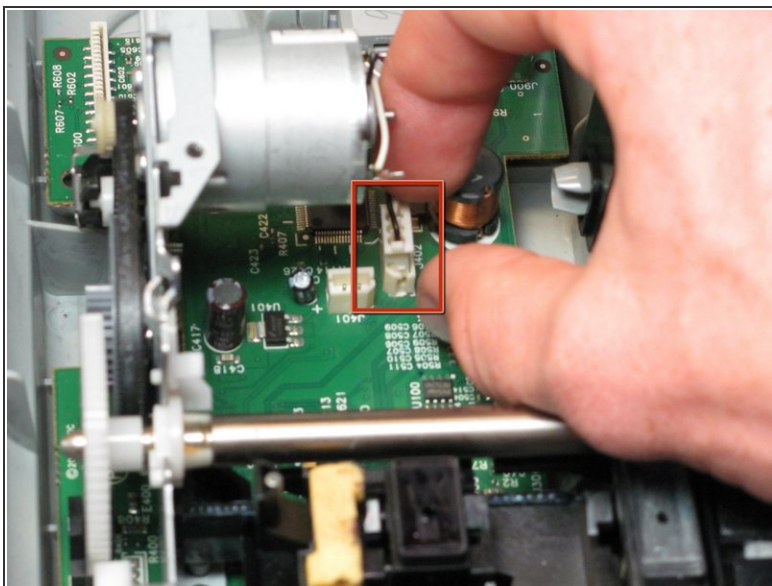
- Remove the metal tab by rotating it away from the body of the printer and pulling up.
- Remove the brush by grasping it firmly by the base and lift straight up.

Step 27



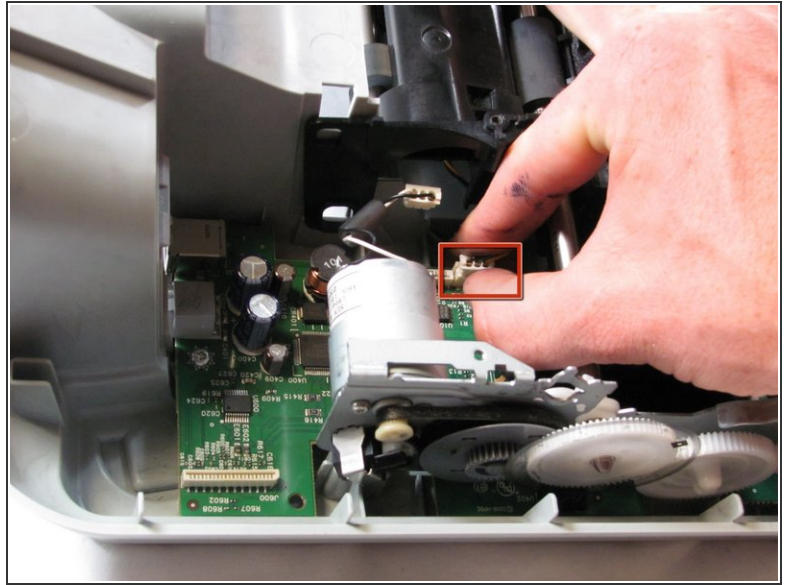
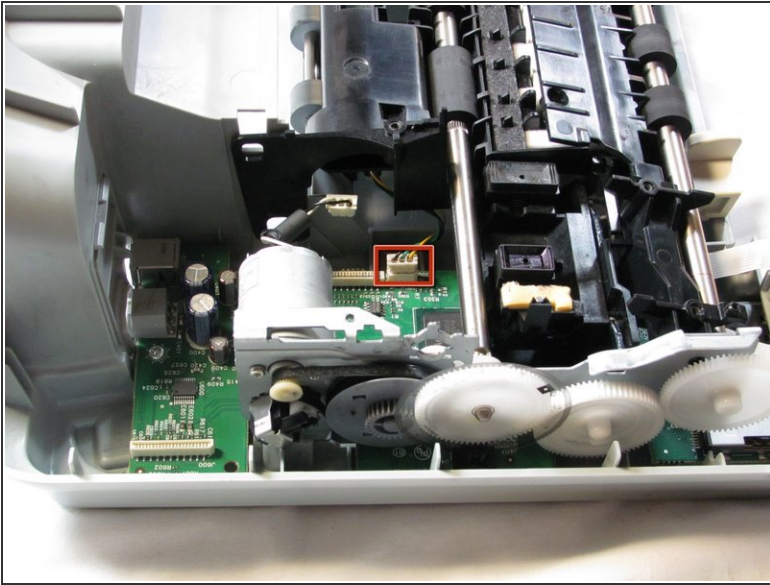
- Remove the pad holder by lifting it straight up.

Step 28



- Remove the connector holding the feed roller motor to the logic board by pulling it straight up
- Remove the T10 12mm Torx screw on the roller panel.

Step 29



- Disconnect the page sensor from the logic board by pulling straight up on the connector.

Step 30



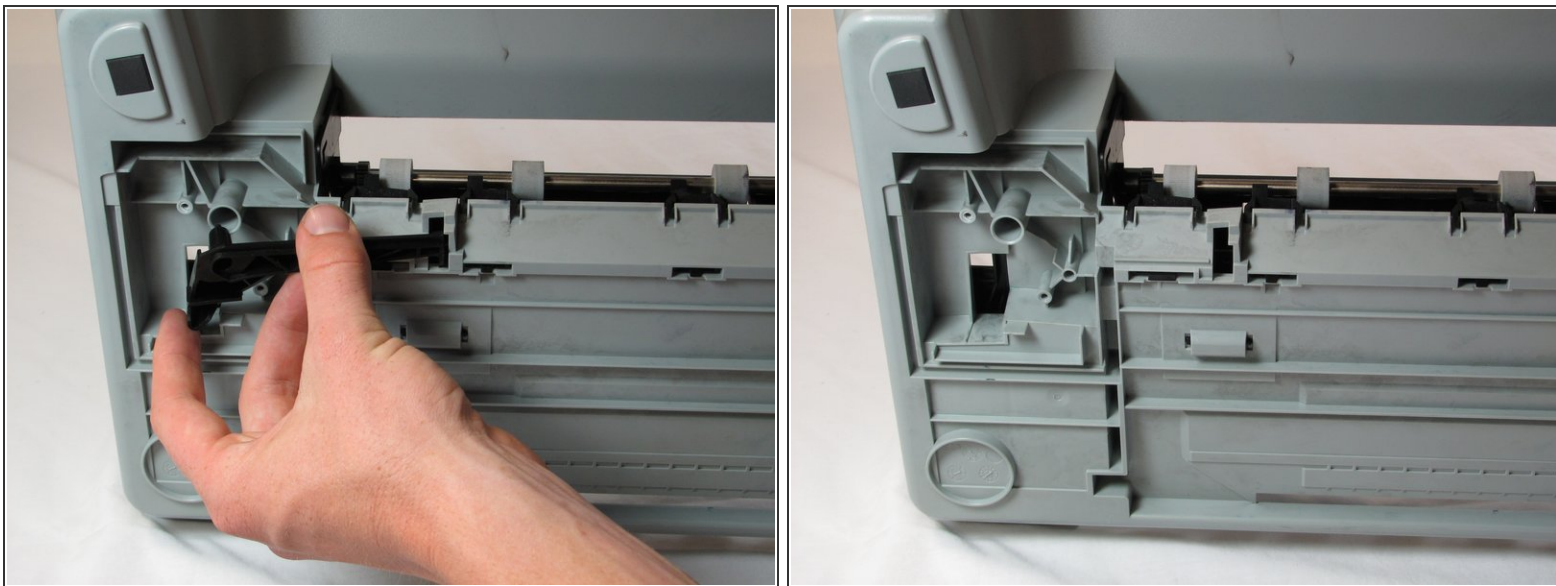
- Rotate the printer 180 degrees and turn it up on to the front side, so that the back of the printer is facing up and the bottom facing you.
- Be careful because the feed roller assembly is now loose, but it is still attached to the main body of the printer.
- Push in the tab on the left side of the back panel and pull outward to remove the back panel.

Step 31



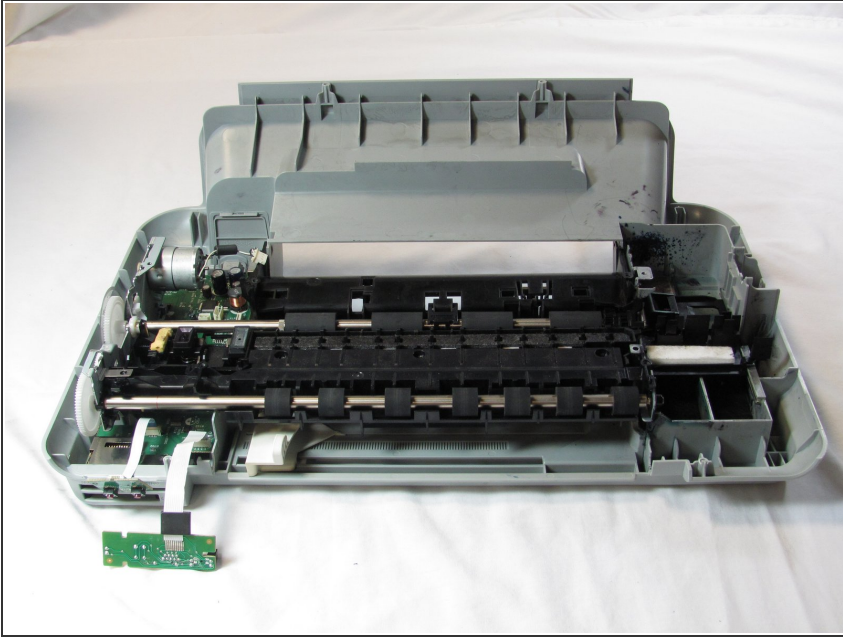
- Tilt the printer up until the bottom of the printer can be seen.
- Remove the T10 12mm Torx screw from the bottom panel.
- Grasp the top edge of the bottom panel and pull to remove it.

Step 32



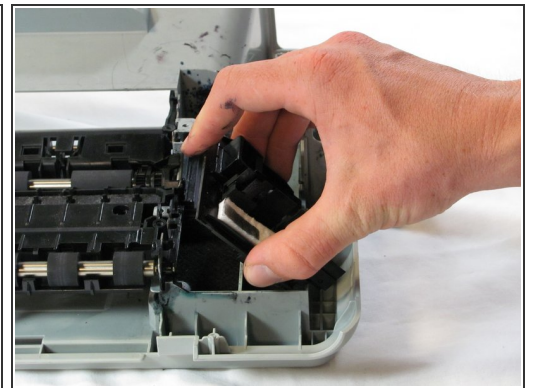
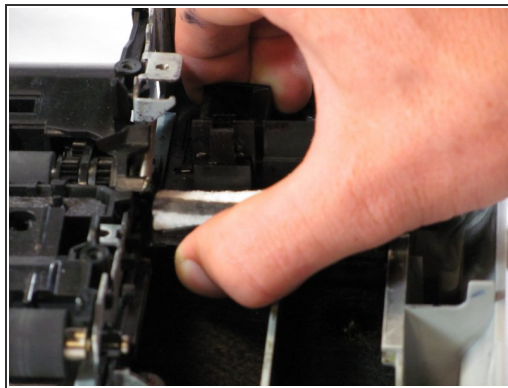
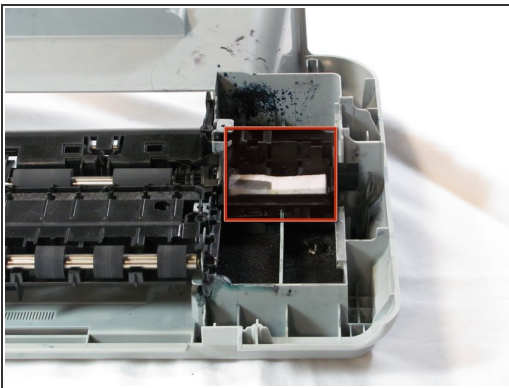
- Remove the black plastic cross member from the bottom of the printer.

Step 33



- Turn the printer back down so that it is sitting on the bottom panel and rotate the printer 180 degrees.

Step 34

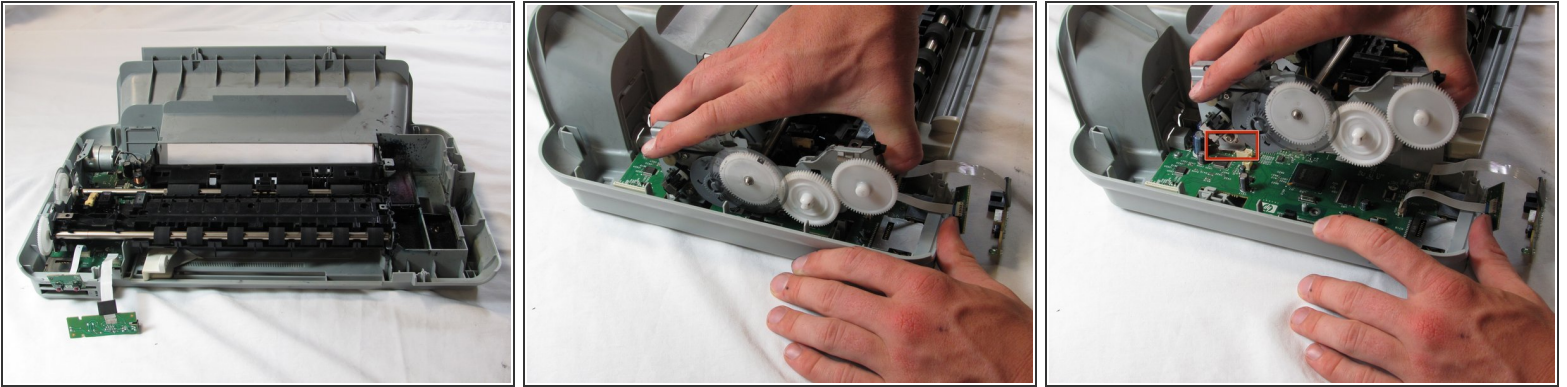


- Remove the printer head cleaner by lifting the front of the printer head cleaner above the track and slide it forward.



This is an extremely difficult step. It can take quite a bit of force to lift the printer head cleaner above the track and it is easy to slip and hurt yourself.

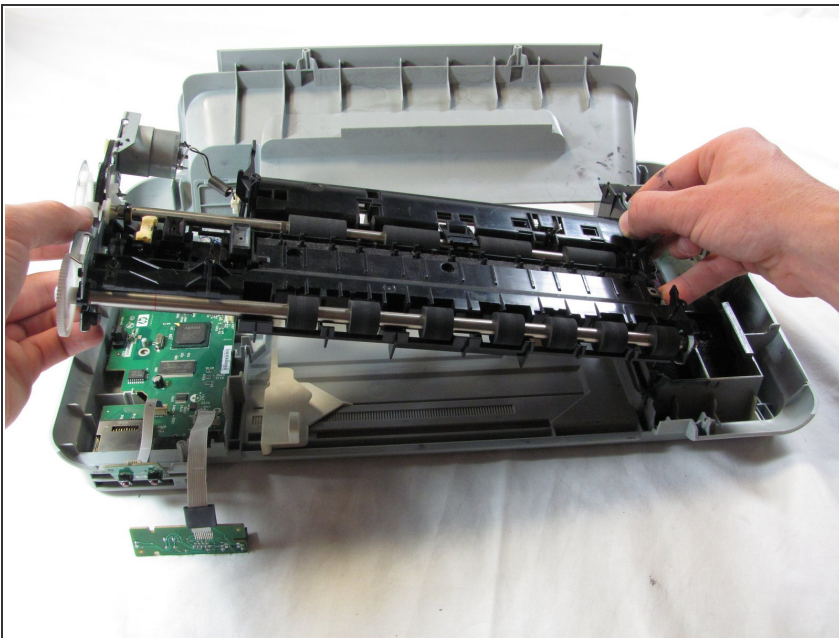
Step 35



i This step can be performed without rotating the printer, but we have rotated the printer for clarity.

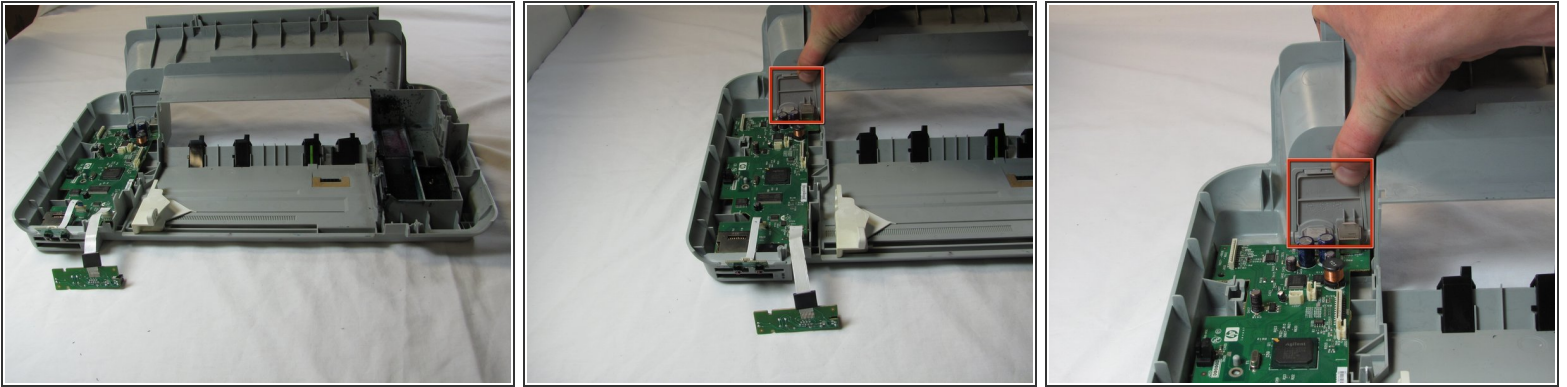
- Grasp the left side of the feed roller assembly and pull towards the front of the printer and up to free the metal tab from the slot.

Step 36



- Lift the feed roller assembly straight up to remove it.

Step 37 — Main Circuit Board



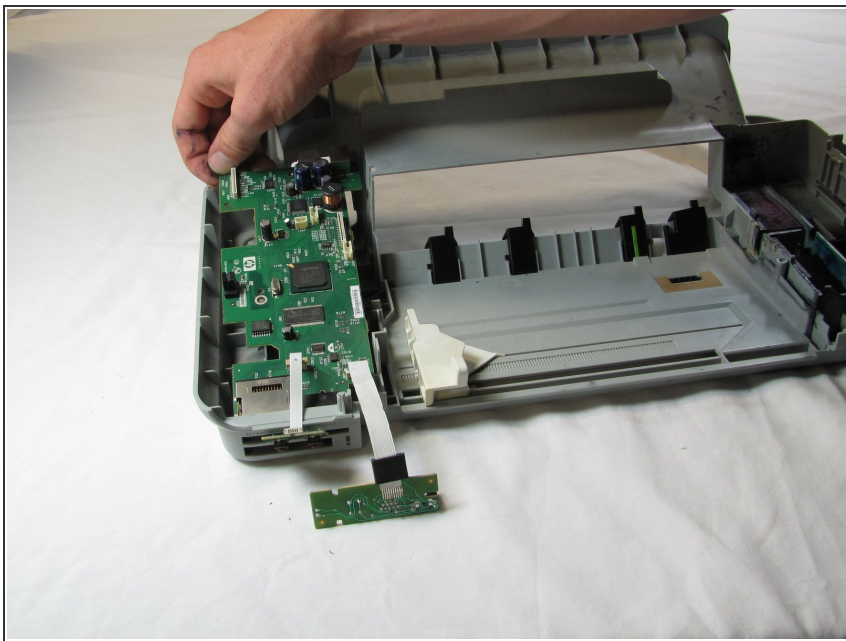
- Set aside the feed roller assembly.
- Push down on the tab that is on the power and USB back panel and then away from the printer to remove the power and USB back panel.

Step 38



- Remove the two T10 12mm Torx screws from the main circuit board.

Step 39



- Remove the main circuit board by gently lifting it up from the back and pulling away from the front of the printer.
- Be careful not to lift too fast, as doing so can cause damage to the main circuit board.

To reassemble your device, follow these instructions in reverse order.