



# HP Photosmart c3180 Scanner Bulb Replacement

Replacing a burnt out of broken scanner bulb.

Written By: Jim






## TOOLS:

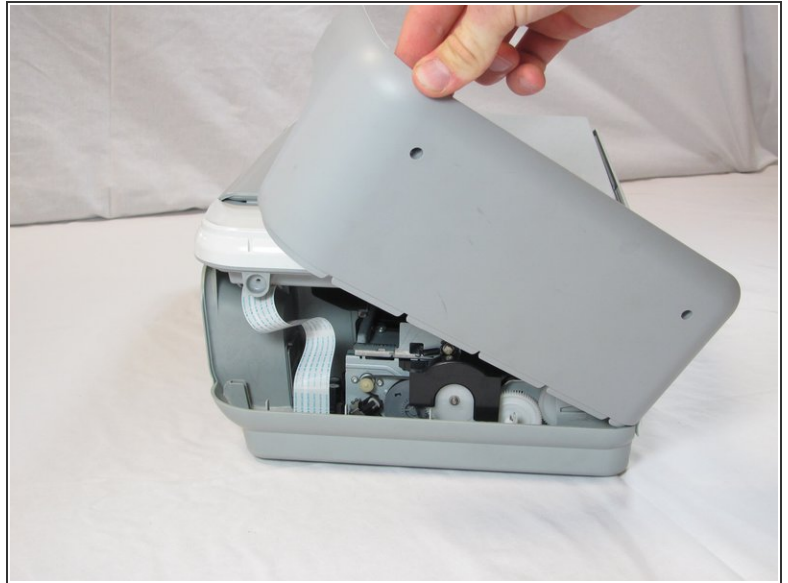
- [Spudger](#) (1)
  - [T10 Torx Screwdriver](#) (1)
-

## Step 1 — Top Panel



-  Before disassembling your printer, be sure that the printer has been unplugged.
- Rotate the printer 90 degrees counter clockwise so that the side panel next to control panel is facing you.
- Remove the two T10 12mm Torx screws from the left side panel.

## Step 2



- Firmly pull the the back of the side panel until it separates from the body of the printer.
- Rotate the side panel upwards while pulling it towards yourself to remove the panel.

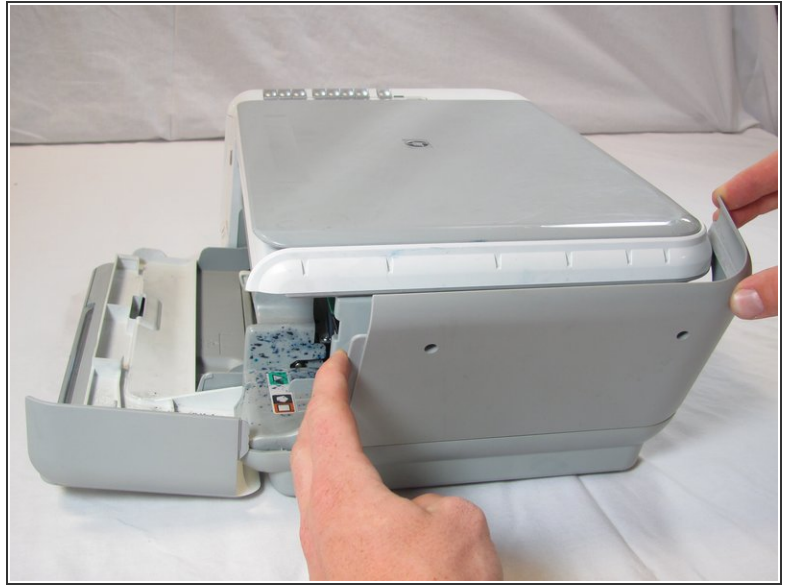
## Step 3



- Rotate the printer 90 degrees clockwise.
- Grasp the paper tray and rotate it down.
- Insert your fingers into the slot in the printer door and pull to rotate the gate down.



## Step 4



- Rotate the printer 90 degrees clockwise.
- Remove the two T10 12 mm Torx screws.
- Grasp both sides of the side panel and pull it forward to remove the panel.

## Step 5



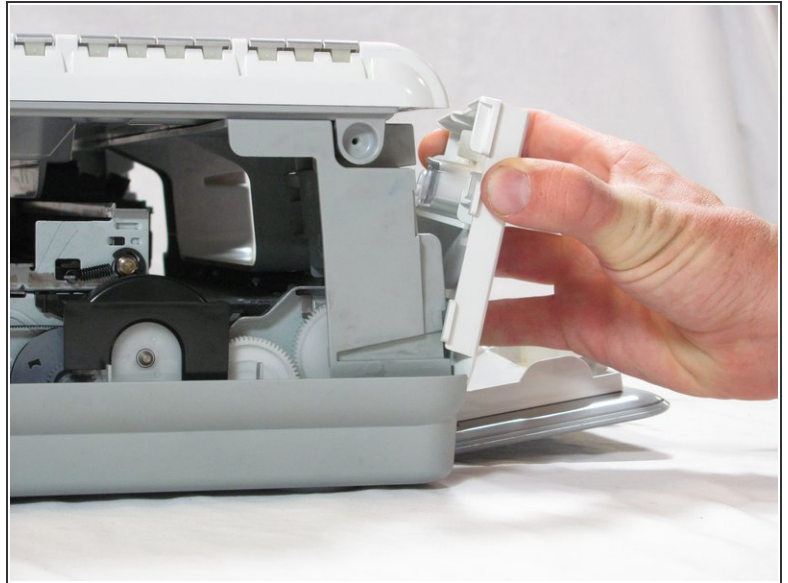
- Rotate the printer 90 degrees counter clockwise.
- Lift the scanner lid to expose the scanner glass.

## Step 6



- Remove the two T10 12 mm Torx screws.
- ⚠ Do not attempt to lift the top panel off the printer yet because it is still connected to the printer body by a cable.

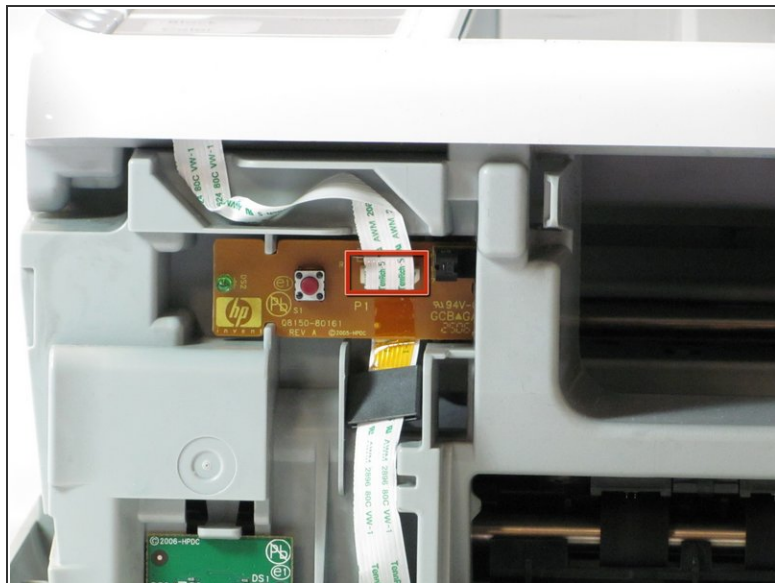
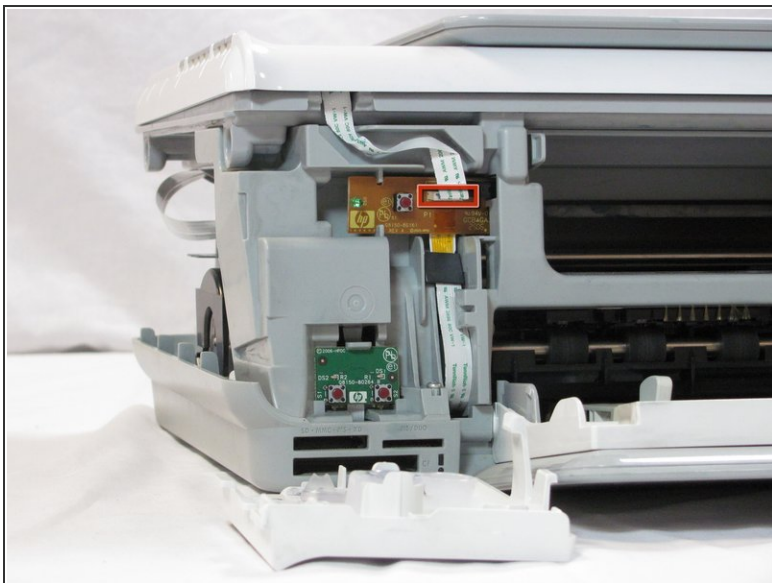
## Step 7



- Rotate the printer 90 degrees counter clockwise.
- Inside the printer is a small white tab. Press it inward with a spudger until a pop is heard.
- Remove the front panel by grasping its front and pulling away from the printer.

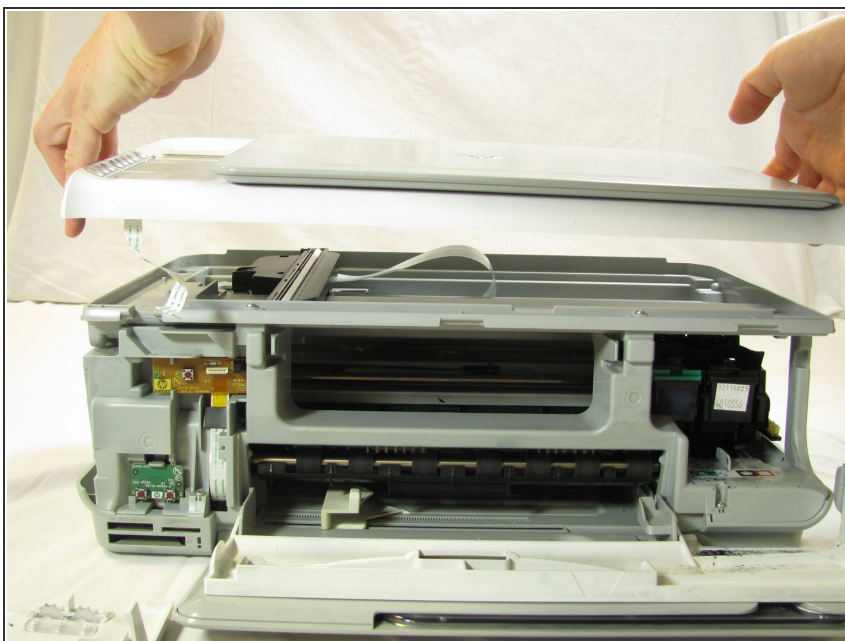


## Step 8



- Rotate the printer 90 degrees clockwise.
- Remove the cable connecting the top panel of the printer to the power button assembly.

## Step 9




- Carefully lift the top panel of the printer away from the printer body.

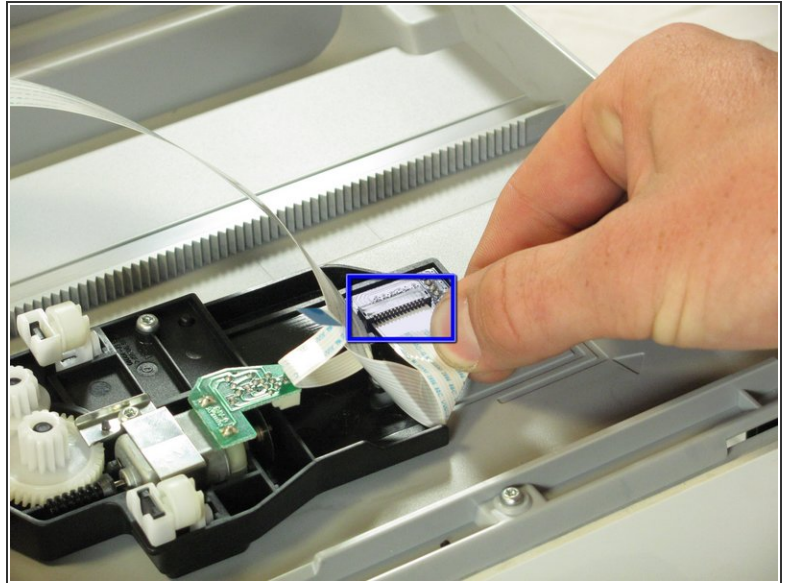
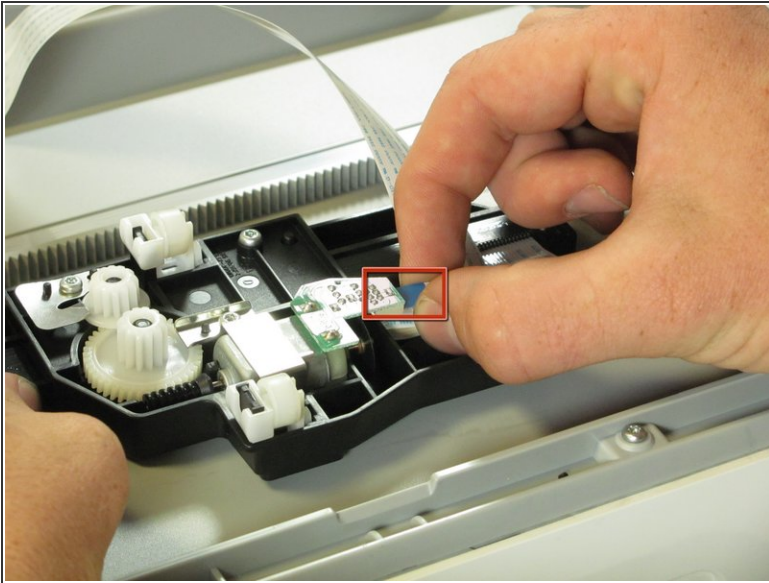
## Step 10 — Scanner Bulb



- Set aside the top panel of the printer.

 Lift the scanner carriage vertically, being careful not to yank of the cables connecting it to the printer.

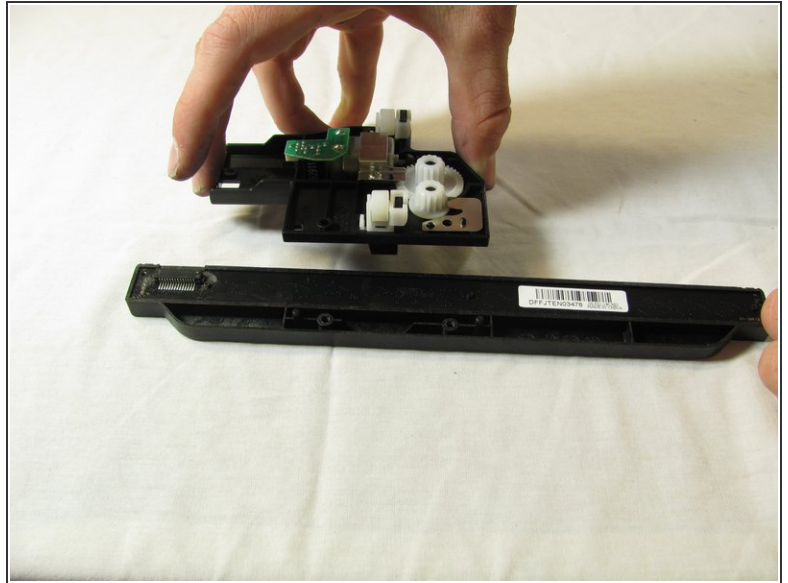
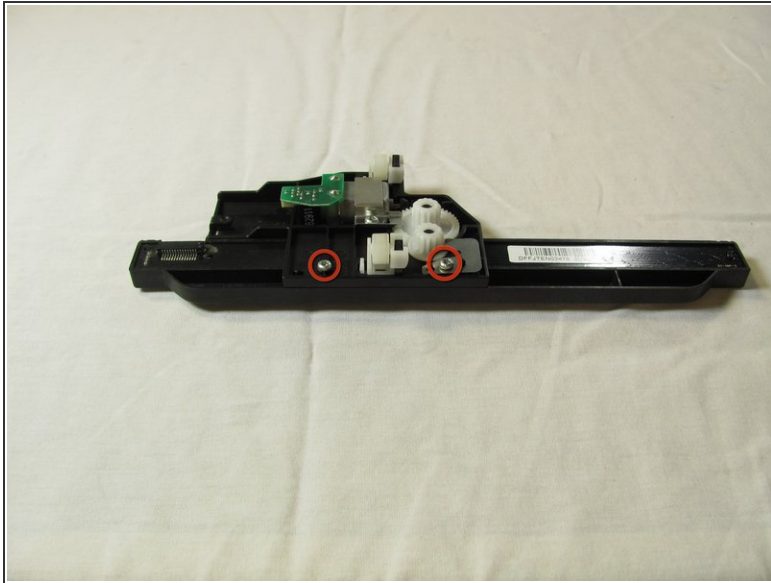
## Step 11



- Flip the scanner carriage over to expose the connectors on the bottom.
- Carefully remove the small cable from the connector.
- Carefully remove the large cable from the connector.



## Step 12



- Remove the scanner carriage from the scanner tray and flip it upside down.
- Remove the two T10 12mm Torx screws.
- Remove the scanner carriage from the scanner bulb.

To reassemble your device, follow these instructions in reverse order.