



HP Photosmart c3180 Scanner Glass Replacement

Replacing that cracked or scratched scanner glass.

Written By: Jim






TOOLS:

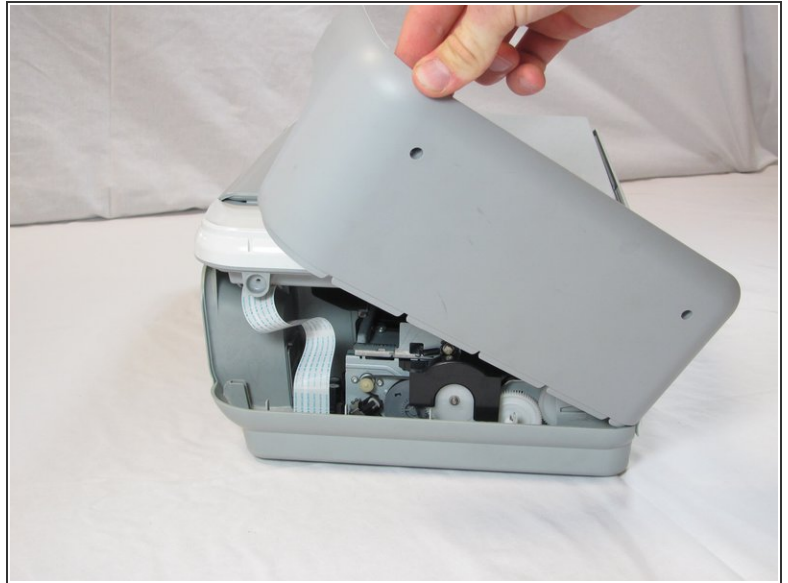
- [Spudger](#) (1)
- [T10 Torx Screwdriver](#) (1)

Step 1 — Top Panel



-  Before disassembling your printer, be sure that the printer has been unplugged.
- Rotate the printer 90 degrees counter clockwise so that the side panel next to control panel is facing you.
- Remove the two T10 12mm Torx screws from the left side panel.

Step 2



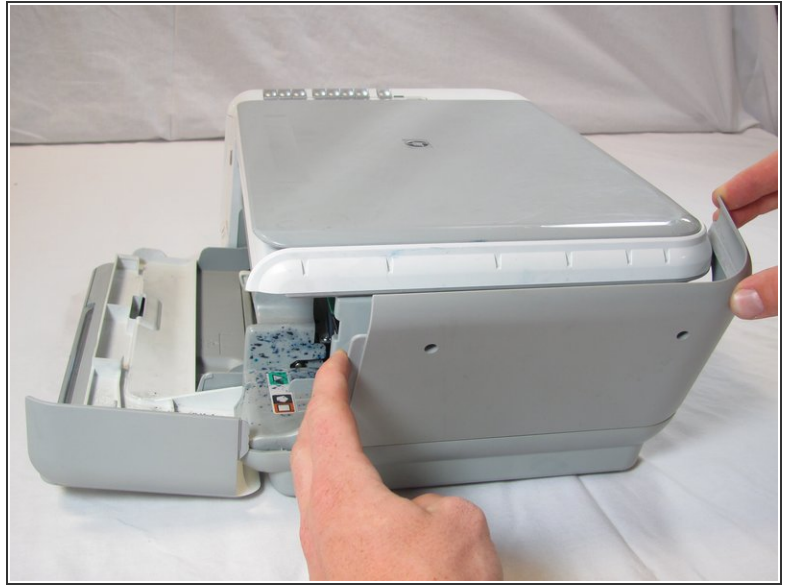
- Firmly pull the the back of the side panel until it separates from the body of the printer.
- Rotate the side panel upwards while pulling it towards yourself to remove the panel.

Step 3



- Rotate the printer 90 degrees clockwise.
- Grasp the paper tray and rotate it down.
- Insert your fingers into the slot in the printer door and pull to rotate the gate down.

Step 4



- Rotate the printer 90 degrees clockwise.
- Remove the two T10 12 mm Torx screws.
- Grasp both sides of the side panel and pull it forward to remove the panel.

Step 5



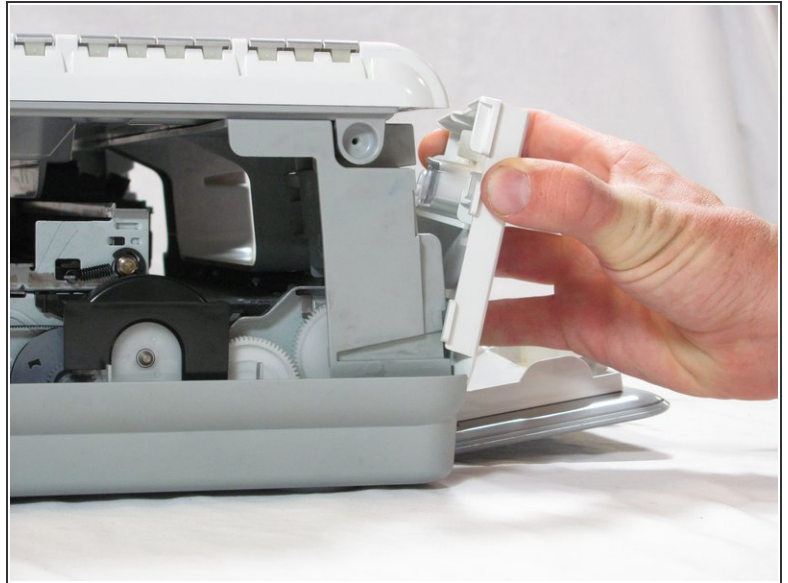
- Rotate the printer 90 degrees counter clockwise.
- Lift the scanner lid to expose the scanner glass.

Step 6



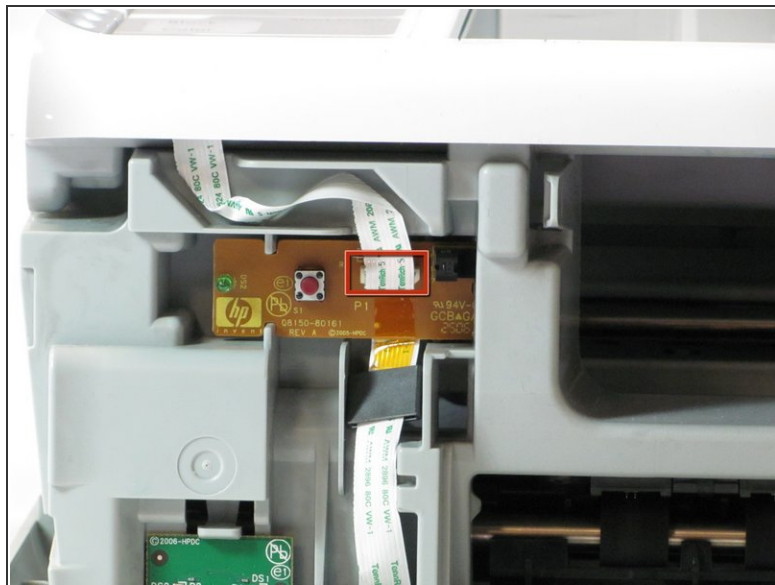
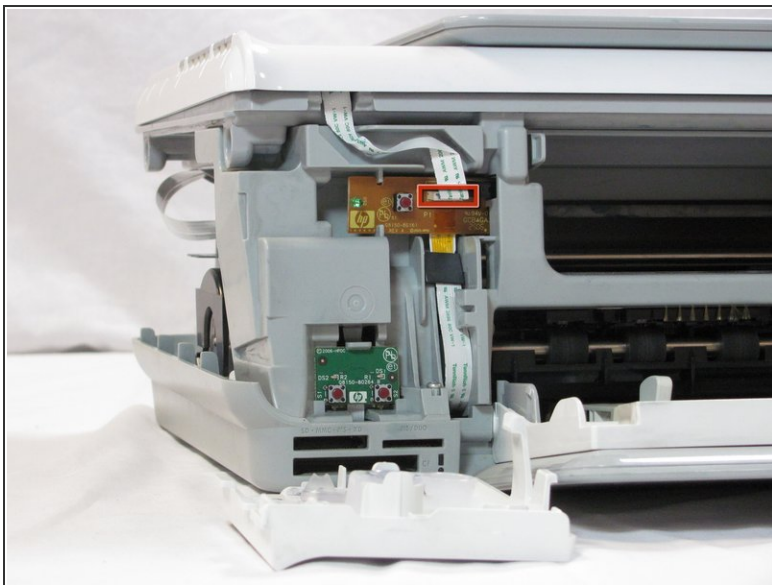
- Remove the two T10 12 mm Torx screws.
- ⚠ Do not attempt to lift the top panel off the printer yet because it is still connected to the printer body by a cable.

Step 7



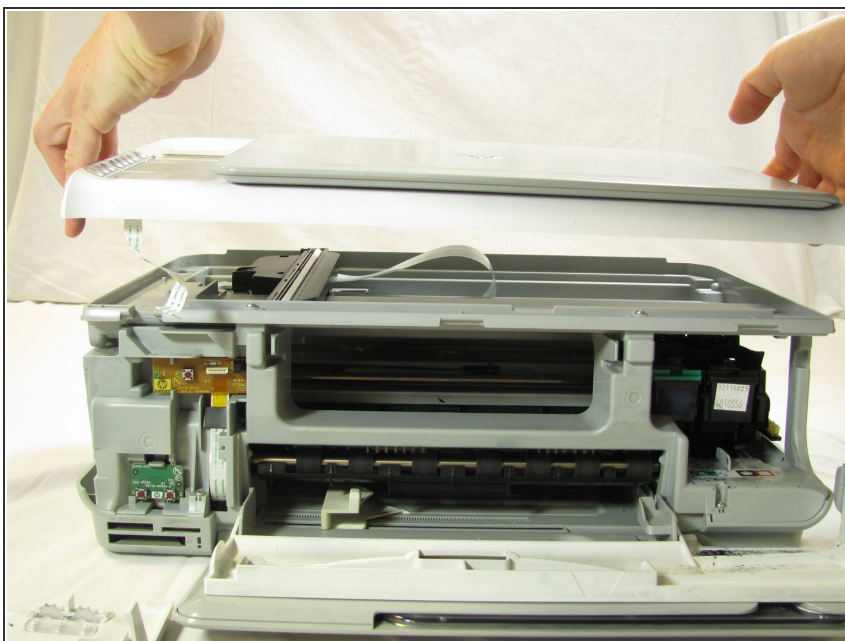
- Rotate the printer 90 degrees counter clockwise.
- Inside the printer is a small white tab. Press it inward with a spudger until a pop is heard.
- Remove the front panel by grasping its front and pulling away from the printer.

Step 8



- Rotate the printer 90 degrees clockwise.
- Remove the cable connecting the top panel of the printer to the power button assembly.

Step 9



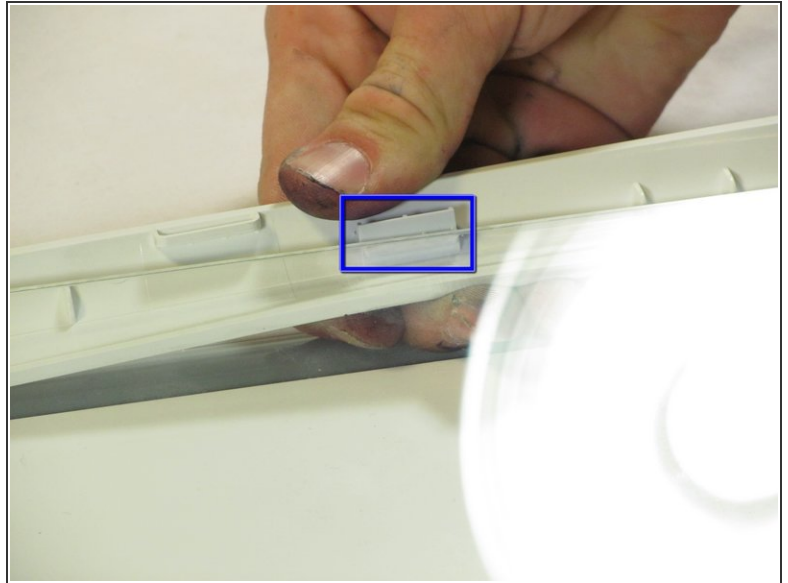
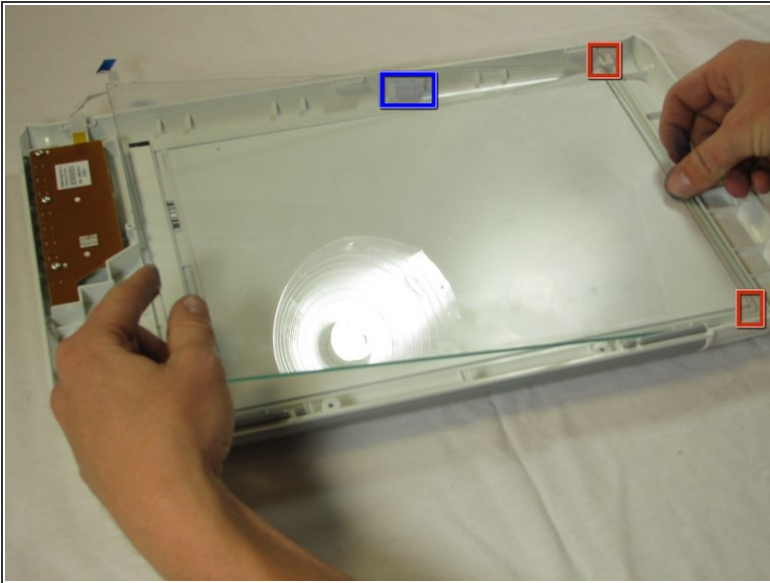
- Carefully lift the top panel of the printer away from the printer body.

Step 10 — Scanner Glass



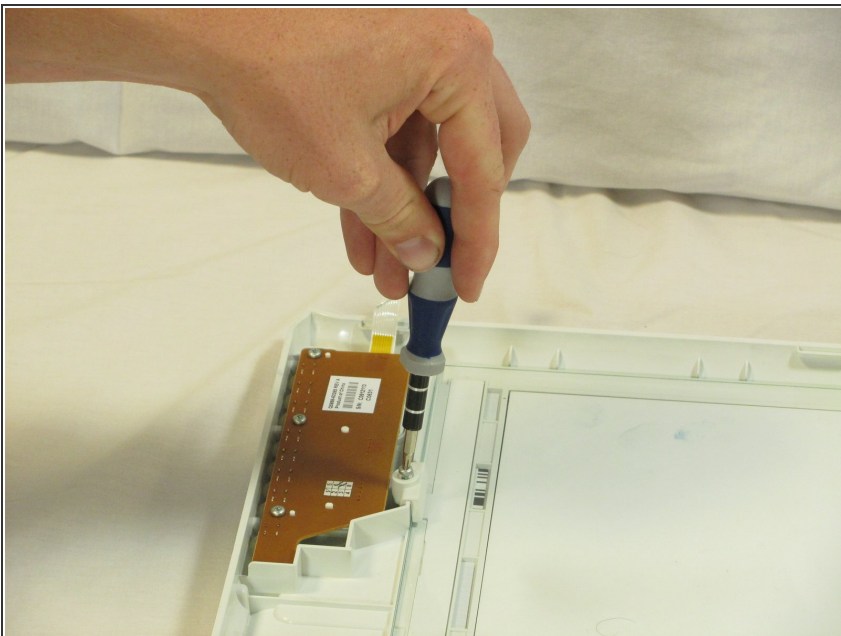
- Set aside the printer body.
 - Unscrew the T10 12 mm Torx screw.
 - Remove the plastic tab holding the glass in place.
- ⚠ Carefully lift the scanner glass panel above the plastic barrier and pull it towards the control panel circuitry. It can take quite a bit of force to get the panel to slide out. If not removed carefully, the scanner glass can shatter

Step 11



- Slide the new panel of glass in to the tabs on the right side of the top panel.
- Place your thumb on top of the tab at the top of the panel. grip the outside edge of the panel and roll outward, allowing the scanner glass panel to fall into place.

Step 12



- Reattach the plastic piece which holds the scanner glass down and the 2.74 mm Torx screw.

To reassemble your device after replacing the glass, follow these instructions starting from the removal of the top panel in reverse order.