



HP Photosmart c4780 Scanner Glass Assembly Replacement

The sliding piece that scans documents in the printer can be easily replaced in the case of malfunction.

Written By: Renee Lamb





TOOLS:

- [iFixit Opening Tools](#) (1)
- [T10 Torx Screwdriver](#) (1)



PARTS:

- [Replacement Sliding Scan Piece \(Code CA4B7P00310040941070\)](#) (1)

Step 1 — Outer Shell Disassembly



- Unplug the device from any energy sources.
- Lift the top cover of the scanner.
- Use a plastic opening tool to remove the plastic frame surrounding the glass.

Step 2



- Carefully pull the frame away from the glass.
- ⓘ If it doesn't remove easily, use the iFixit Opening Tool again to pry stuck sections.

Step 3



- Use a T10 screwdriver to unscrew the two screws that fasten the frame to the printer hood.

Step 4



- Put your finger behind the panel with the power button.
- Then, pull the piece outwards.

Step 5



- Unscrew the screw inside the power button panel space.
- Then, unscrew the screw that is across the printer slider.

Step 6



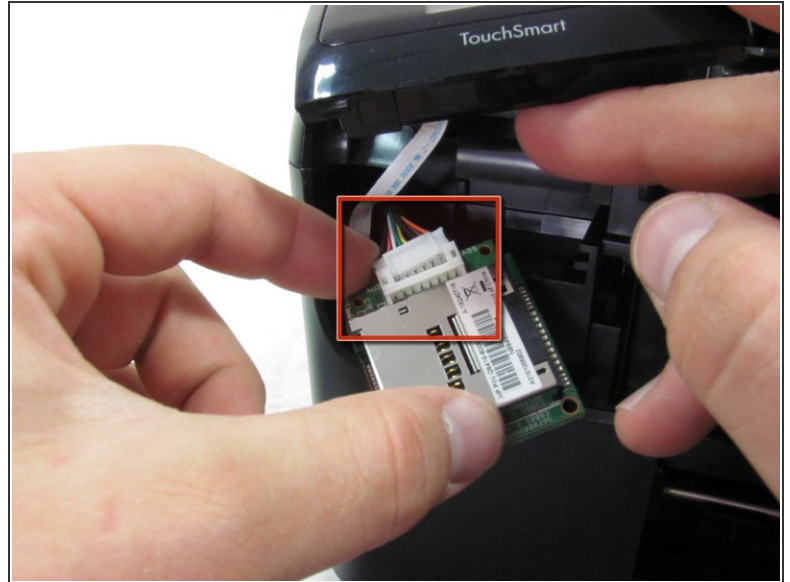
- Pull the white circuit board outwards which is located under the small screen.
 - Unplug the small ribbon cable from the circuit board.
- ⚠ Be careful when you unplug the ribbon cable not to use too much force. Using too much force may damage or rip the cable.

Step 7



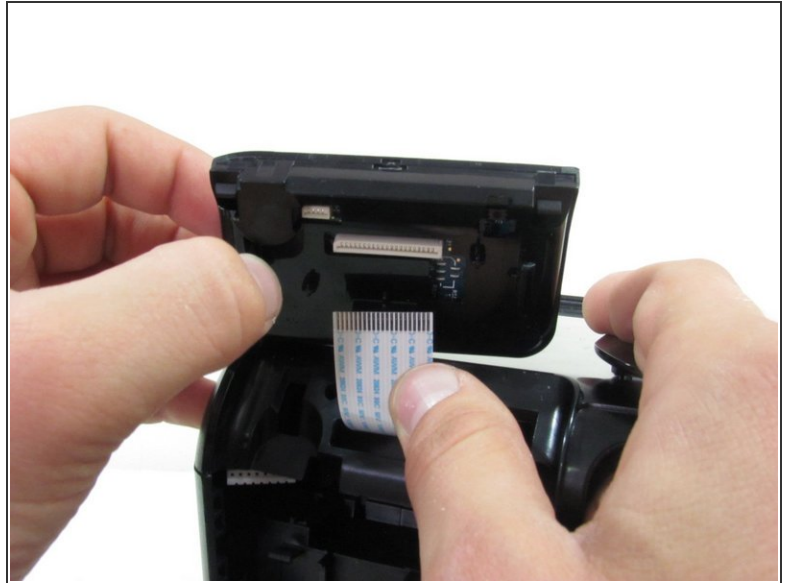
- Unplug the small ribbon cable from the circuit board. Be careful when you unplug the ribbon cable not to use too much force. Using too much force may damage or rip the cable.

Step 8



- Pull the memory card reader's circuit board out.
- Detach the white wiring connector from the back of the circuit board.
- ⓘ You may need to use a finger nail or a plastic opening tool to detach the white wiring connector from the circuit board.

Step 9



- Put your finger behind the small screen.
 - Then, pull it up.
- ⚠ Do not hesitate to use force to remove the TouchSmart panel.
- Disconnect the ribbon cable from the small screen.

Step 10



- Pull the printer hood upward.

Step 11 — Scanner Glass Assembly



- Lift the scanning lid from the lower portion of the printer hood.

Step 12



- Leaving the ribbon connected, lift the sliding scanner off the track.
- Pull the ribbon cable out of the slot on the scanner circuit board.
- Insert the scanning piece into the rolling track.

To reassemble the sliding scan piece, follow these instructions in reverse order.