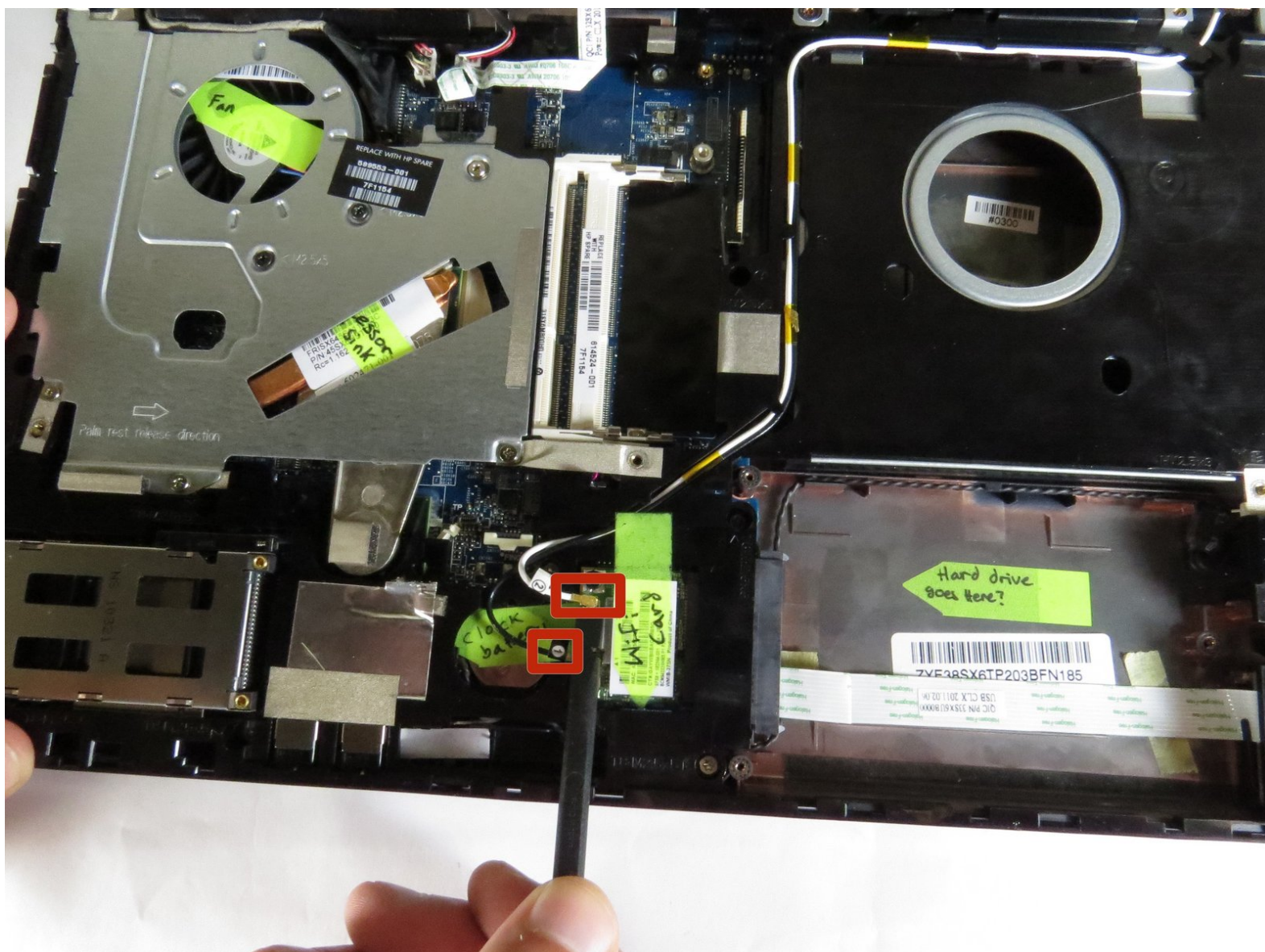




# HP ProBook 4320t Wi-Fi Card Replacement Guide

Slow internet speed or not detecting wireless networks.

Written By: Joshua



## INTRODUCTION

Updating your Wi-Fi Card can give you a faster connection and greater range. Allowing your computer to take full advantage of high speed internet.



### TOOLS:

- [Spudger](#) (1)
  - [Phillips #0 Screwdriver](#) (1)
-

## Step 1 — Battery Removal



- Flip the laptop upside down and remove battery by pressing inward on the two latches holding the battery in.

## Step 2 — Screws



- Unscrew the four (2.5 mm Phillips) screws (Use Phillips #0 Screwdriver).



## Step 3 — Flip



- Flip laptop over and open it.

## Step 4 — Push N Lift



- Slightly push up while lifting up on the power button panel to release the panel.

## Step 5 — Unscrewing



- Unscrew the four (2.5 mm Phillips) screws holding the keyboard in (Use Phillips #0 Screwdriver).

## Step 6 — Careful Now



- Carefully (holding both sides of the keyboard), push up and lift slightly.
- ⚠ Keyboard is still connected via a ribbon cable.
- Move the keyboard slightly to the left to have access to the keyboard ribbon cable.

## Step 7 — Disconnect Wire



- Use the black spudger to lift the black latch holding the keyboard ribbon cable.

## Step 8 — Unscrew



- Unscrew the three (2.5 mm Phillips) screws holding the bottom touchpad panel.



## Step 9 — Slide the Panel Off



- Carefully slide the bottom panel to the right.
- ⚠ Keyboard is connected via a wire to the back of the panel.

## Step 10 — Lift up Carefully



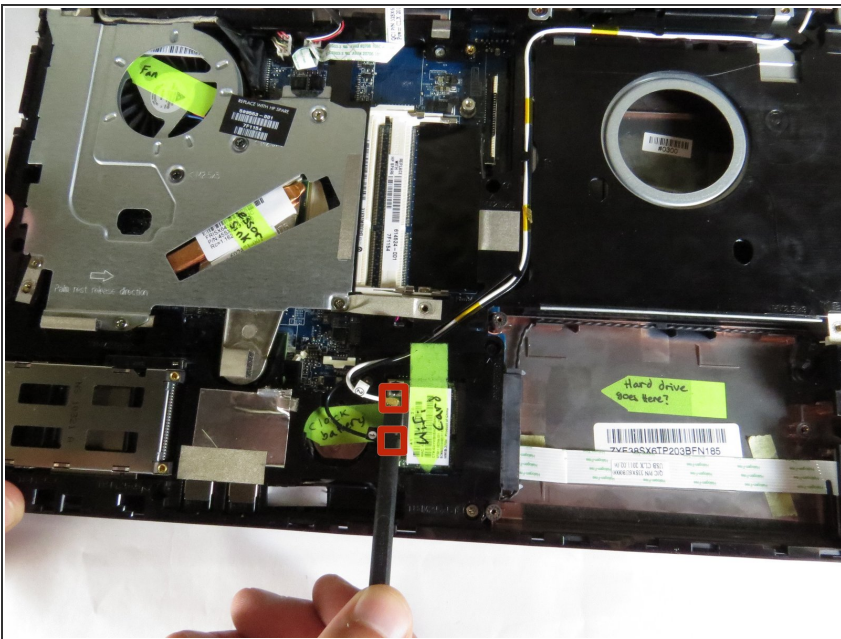
- Flip the bottom touchpad panel directly towards the screen, being sure to not lift it too high.
- ⚠ Keep an eye on the ZIF connector underneath, make sure it is not pulled accidentally.

## Step 11 — Disconnect Wire



- Using the black spudger, slightly pry up on the ZIF connector and lift out the wire carefully.

## Step 12 — Wi-Fi Card

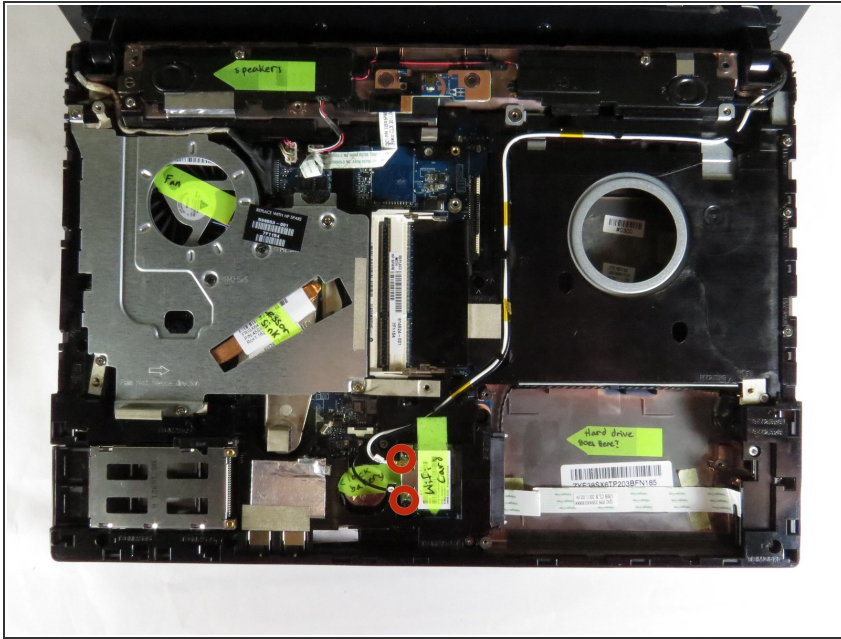


- Use black spudger to detach the two antenna cable connectors to the Wi-Fi card.

⚠ Be careful not to break the cords.



## Step 13



- Unscrew the two (2.5 mm Phillips) screws holding the wifi card in.

⚠ Be careful because upon the last turn of the screw, the Wi-Fi card lifts up slightly.

## Step 14



- Pull the Wi-Fi card towards the left to remove.

To reassemble your device, follow these instructions in reverse order.