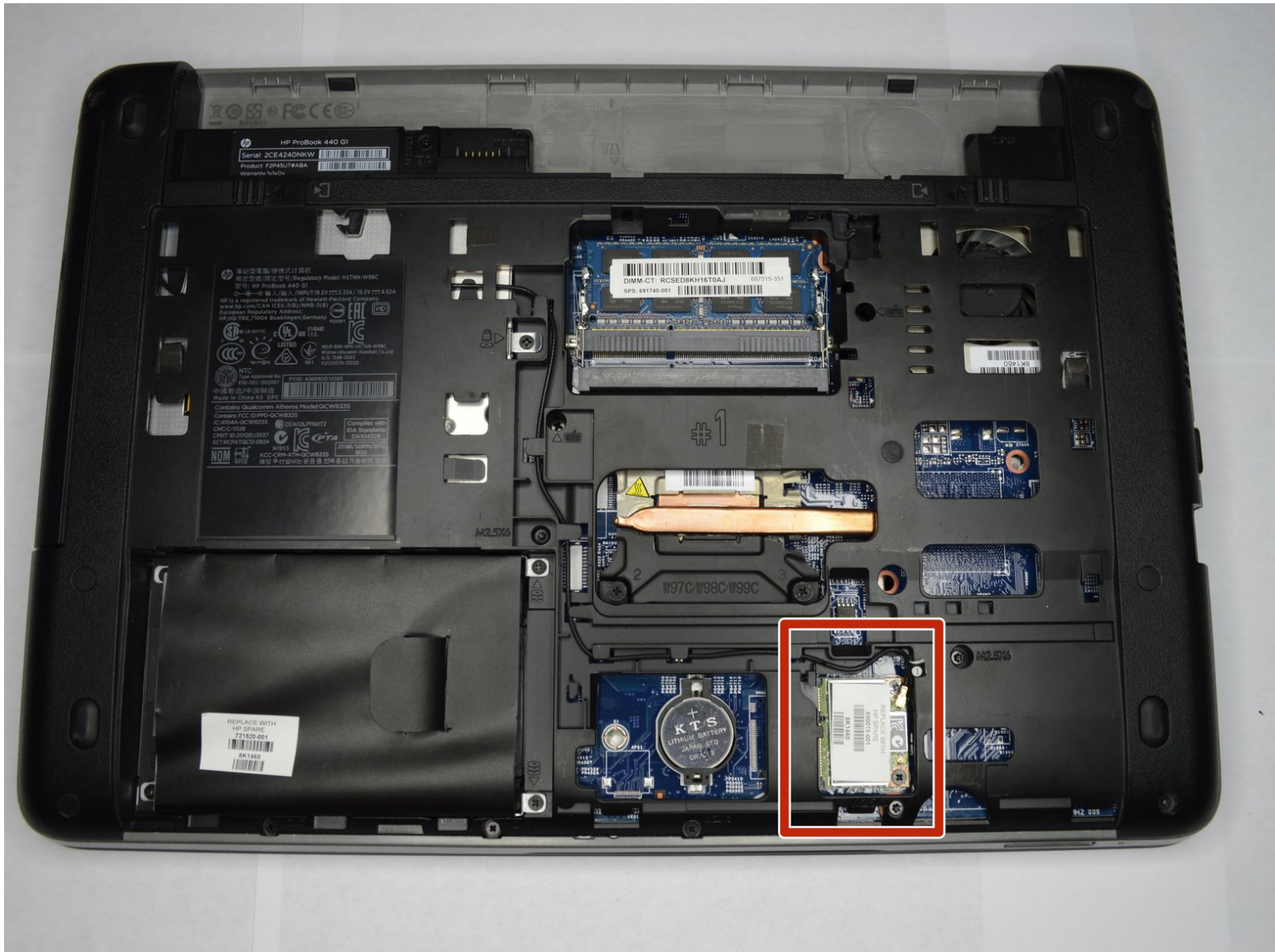




HP ProBook 440 G1 Wifi Card Replacement

Written By: Ethan A Courtney



INTRODUCTION

How to remove and replace the Wifi card on an HP ProBook 440 G1.



TOOLS:

- [Phillips #00 Screwdriver](#) (1)
-

Step 1 — Battery



⚠ Make sure the laptop is turned off before you start.

- Push and hold the release tab on the right and left toward the center.

Step 2



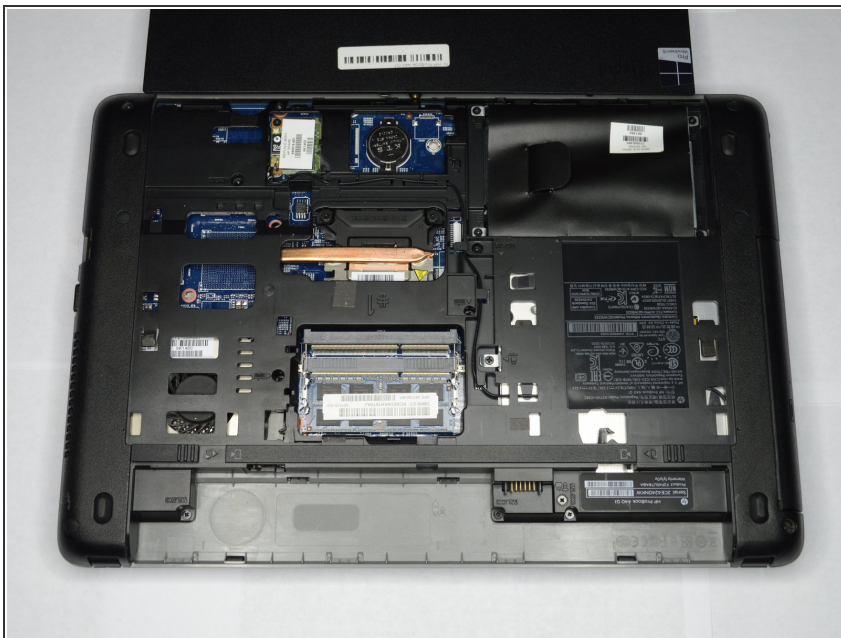
- Pull the battery out.

Step 3 — Backplate



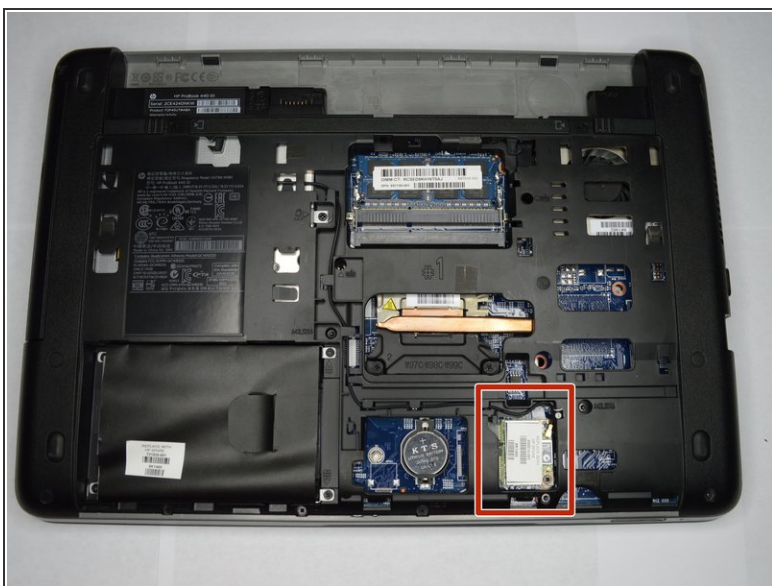
- Push and hold the release tabs on the right and left toward the center again.

Step 4



- Slide the backplate off.

Step 5 — Wifi Card



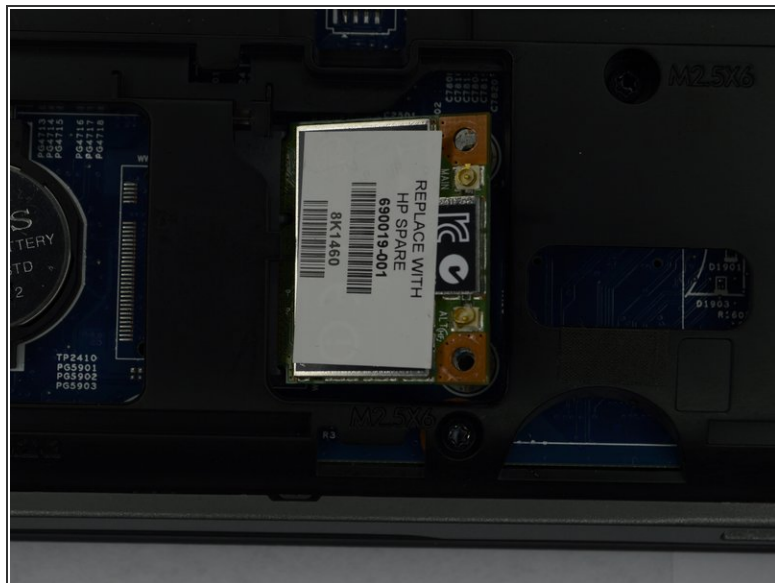
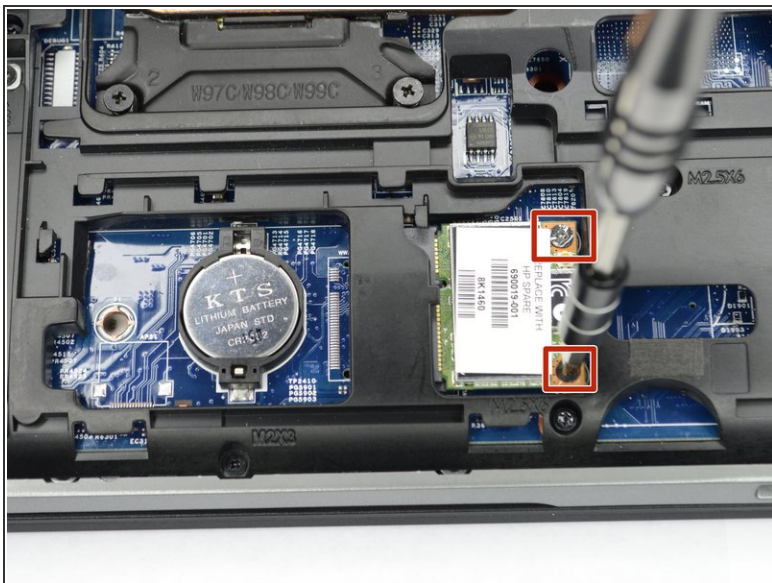
- Locate the Wifi card, found opposite the battery and across from the hard drive.

Step 6



- Remove the wire located near the screws on the wifi card.

Step 7



- Remove the two Phillips #00 screws holding the wifi card in place.

Step 8



- Remove the wifi card.

To reassemble your device, follow these instructions in reverse order.