



Written By: Drew Canada



# INTRODUCTION

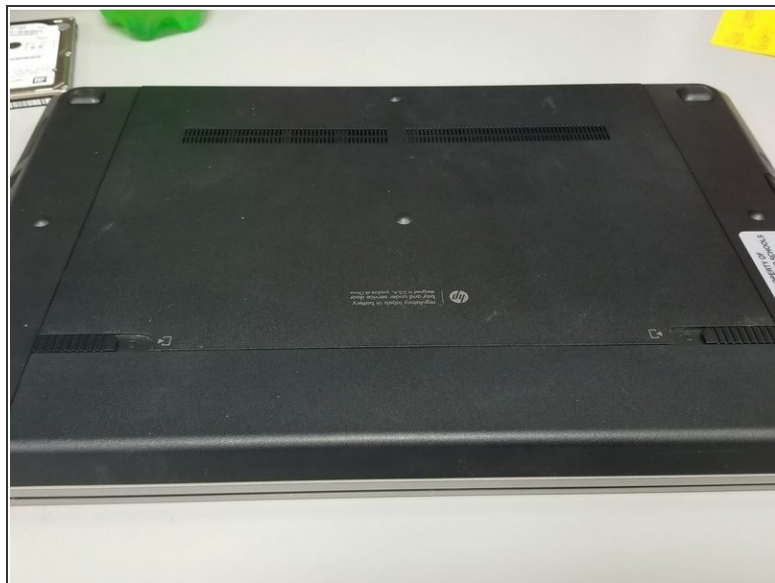
This will teach you the easiest way I found to remove and replace the WiFi NIC in the ProBook 4530s.



## TOOLS:

- [Spudger](#) (1)
  - [Phillips #0 Screwdriver](#) (1)
-

## Step 1 — Introduction



- Start by flipping over the laptop onto its back.

## Step 2 — Battery Removal



- Push both switches inward. The battery should pop out a slight amount.
- Pull out the battery.

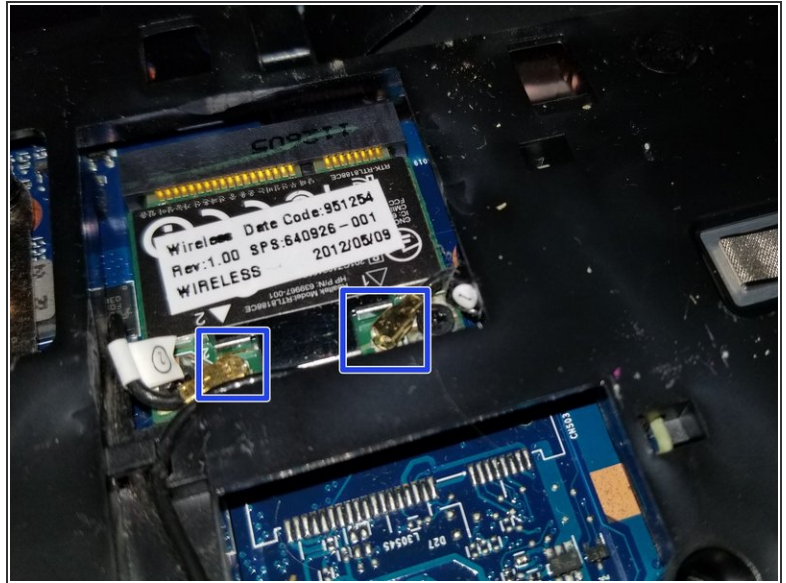
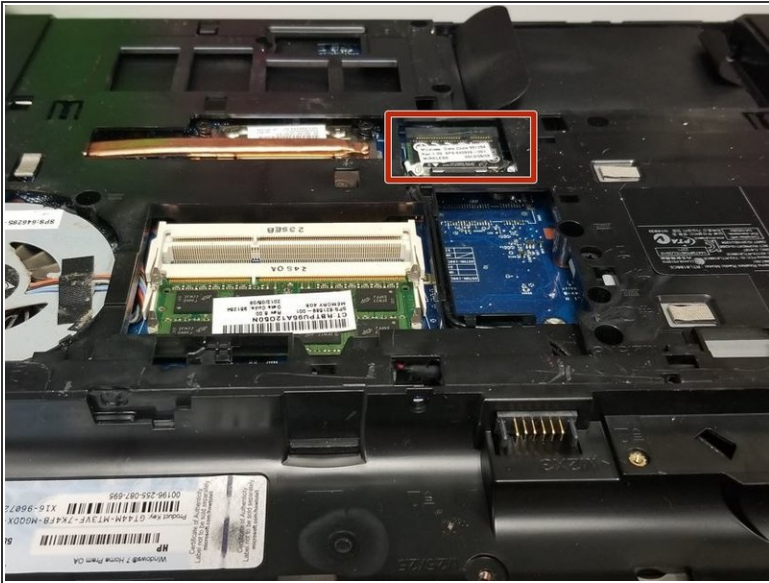
## Step 3 — Back Panel Removal



- Press on both of the battery switches then push on the back panel forward.
- It should pop out slightly.
- Lift and slide the panel off.

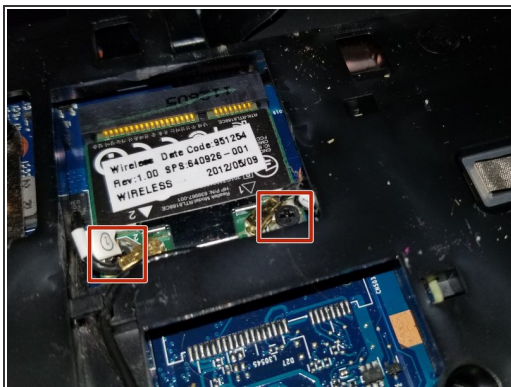


## Step 4 — Connector Removal



- Locate the WiFi card outlined in red.
  - The golden connectors will need to be popped off. They are marked in blue.
- ⚠ Be very careful. If these connectors break, you will have to buy entirely new wires and connectors.
- Use a nail, a flat-head screwdriver, anything that will be able to pop off the connector gently.

## Step 5 — Card Removal



- Remove the two screws that secure the card down.
- The card should pop up at a 45 degree angle.
- Pull the card straight out.

To reassemble your device, follow these instructions in reverse order.