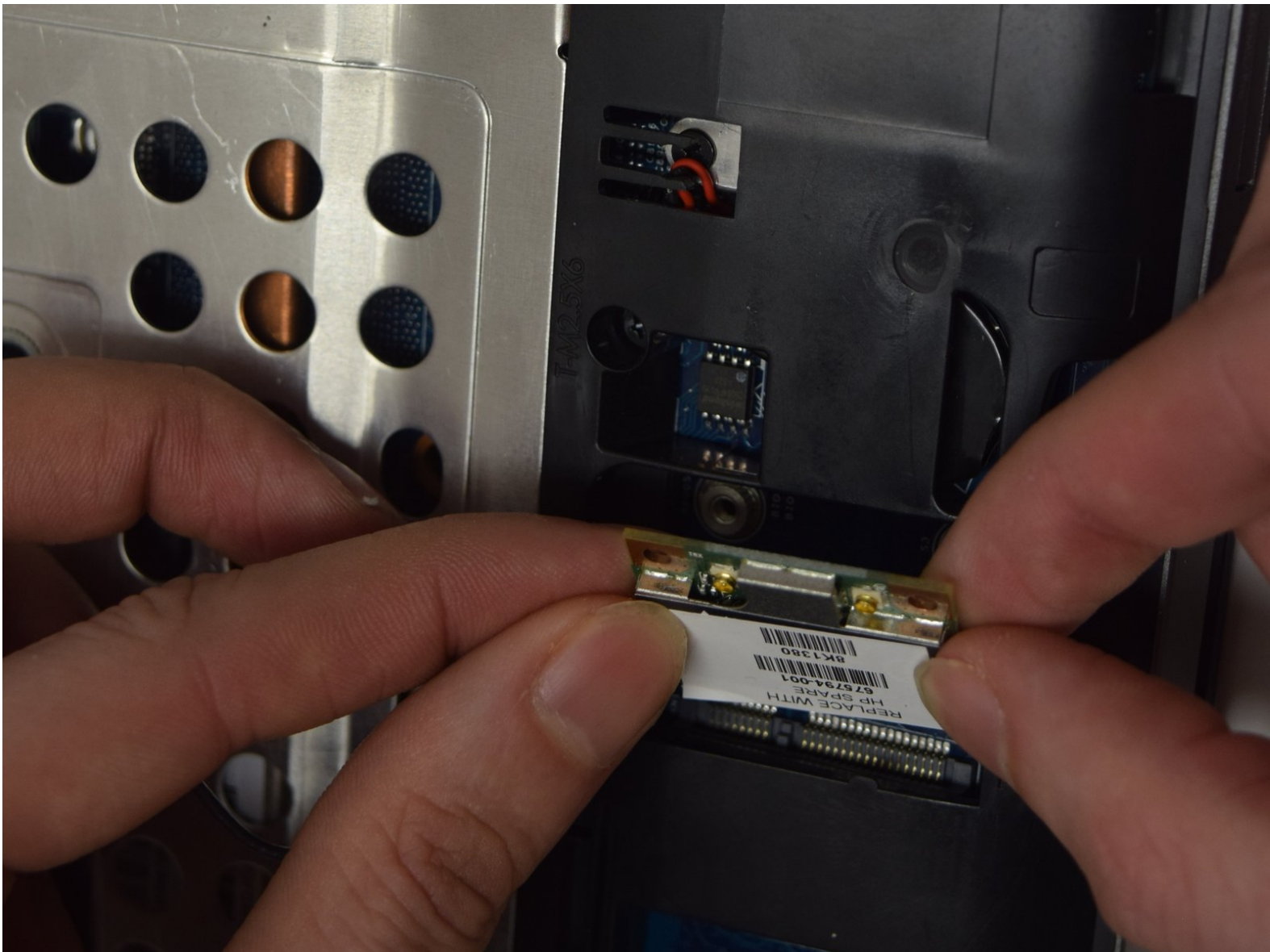




HP ProBook 4540s WLAN Module Replacement

This guide will show you how to replace the WLAN module.

Written By: Amber Schindler



INTRODUCTION

The WLAN module is used to power the Wi-Fi on the ProBook; not to be confused with the WWAN module that powers mobile broadband. The two modules are beside each other but the smaller module is WLAN which will be the focus for this guide.



TOOLS:

- [Phillips #0 Screwdriver](#) (1)
-

Step 1 — Battery



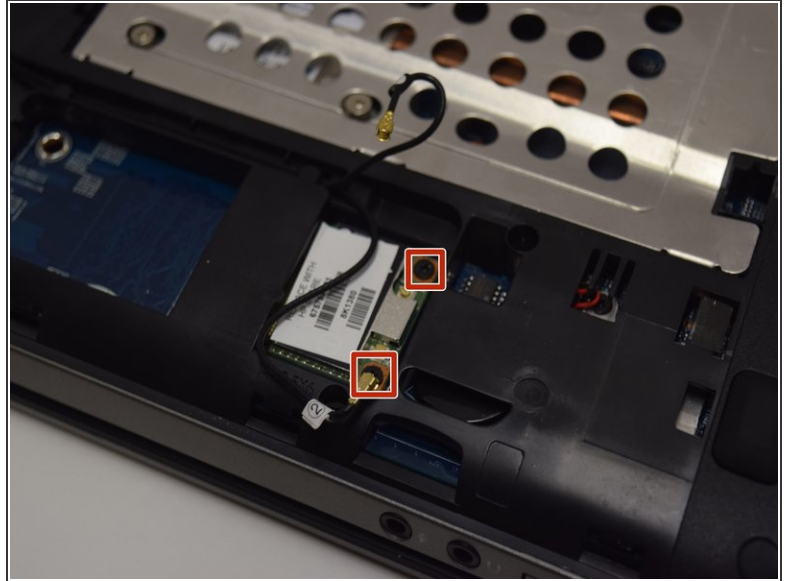
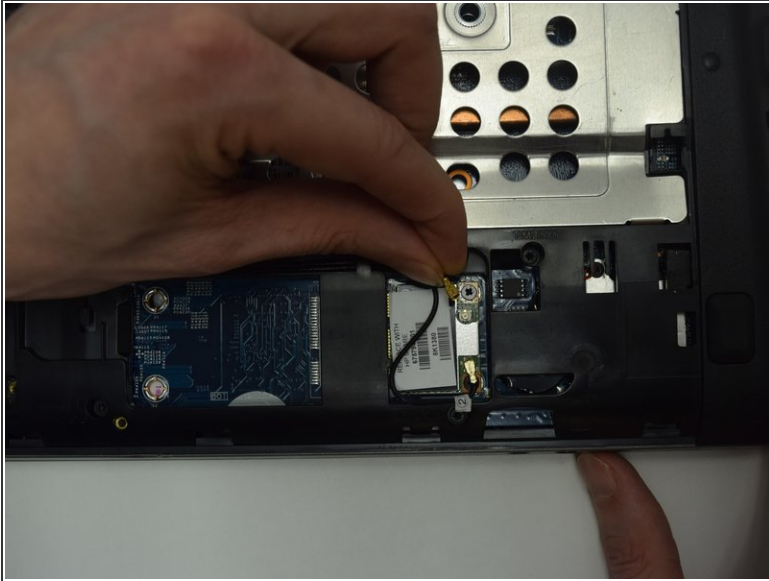
- ⚠ Make sure the computer is shut off and the power cord is unplugged from the AC outlet.
- Slide the two release latches on either side of the battery.
- Gently tilt the battery upward and remove it from its socket.

Step 2 — Bottom Door



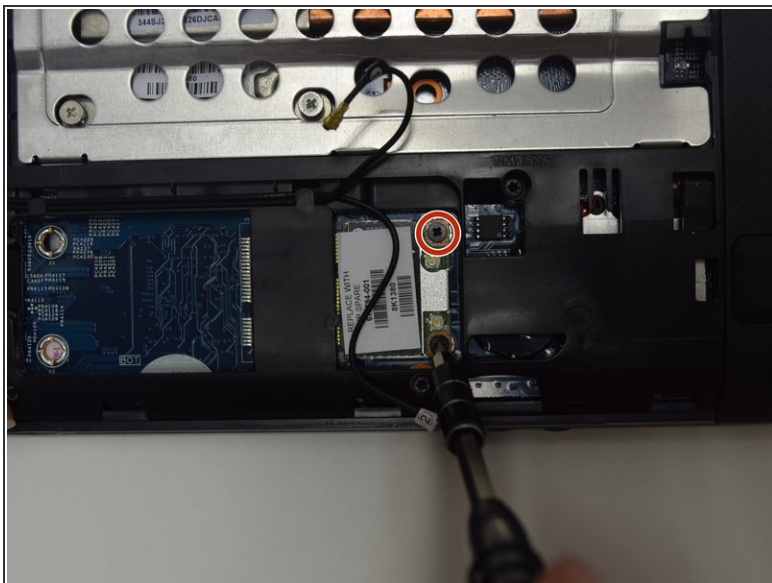
- Turn the computer so the bottom is facing towards you.
- Remove the one 3.0 mm Phillips PM2.0x3.0 security screw.
- ⓘ The security screw is an optional feature and isn't required to hold the backing if there is not one screwed in place.
- Slide the release latches then pull the door towards you. Lift the door away to completely remove it.

Step 3 — WLAN Module



- Disconnect the antenna cables from their terminals in the WLAN module.
- ⓘ One cable is attached to the Auxiliary ("Aux") terminal, represented with a blue wire. The other cable is connected to the Main terminal which is usually represented with a red wire. These wires can be seen in little windows beside the component.

Step 4



- Unscrew two 3.0 mm Phillips PM2.0x3.0 screw securing the module to the computer.
- ⓘ The edge of the module that is opposite of the slot is risen away from the computer.
- Gently lift and remove the module.

To reassemble your device, follow these instructions in reverse order.