



HP Slate 7 4601 Battery Replacement

Replace the battery in your Slate to power up many more hours of fun.

Written By: Zachary



INTRODUCTION

After many times of attempting to recharge the battery with no success, it may be time for your Slate's battery to be replaced. This repair guide is the primary step for all future repairs on your HP Slate, and is a basic process to master. In this guide, you will be removing the following:

1. Back Cover
2. Battery

Prepare your required tools, a new battery for your tablet, and set aside about 10 to 15 minutes to delve into the inner workings of your HP Slate.



TOOLS:

- [T4 Torx Screwdriver](#) (1)
- [Spudger](#) (1)
- [Phillips #00 Screwdriver](#) (1)
- [T3 Torx Screwdriver](#) (1)



PARTS:

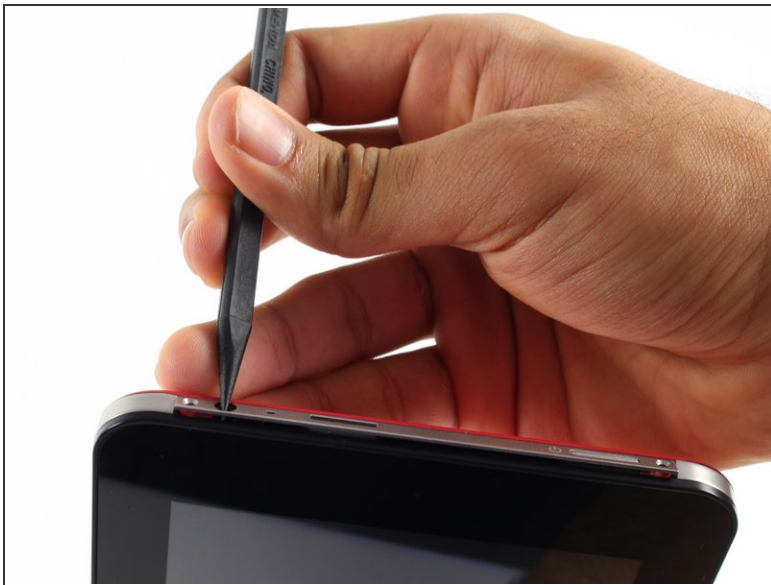
- [HP Slate Replacement Battery](#) (1)

Step 1 — Battery



- Begin your replacement by using a T3 or T4 Torx screwdriver.
 - Remove the two 1.4mm x 3mm Torx Head screws at the top of the device.

Step 2



- With the pointed end of the spudger, remove the thin metal band.
 - ⓘ It is easiest to remove the metal band through the headphone opening.

Step 3



- Using the flat end of the spudger, pry back the rear plastic cover.
- ❗ As you work your way around the edge, several "pop" noises will be made. These noises are caused by the plastic clips coming undone.

Step 4



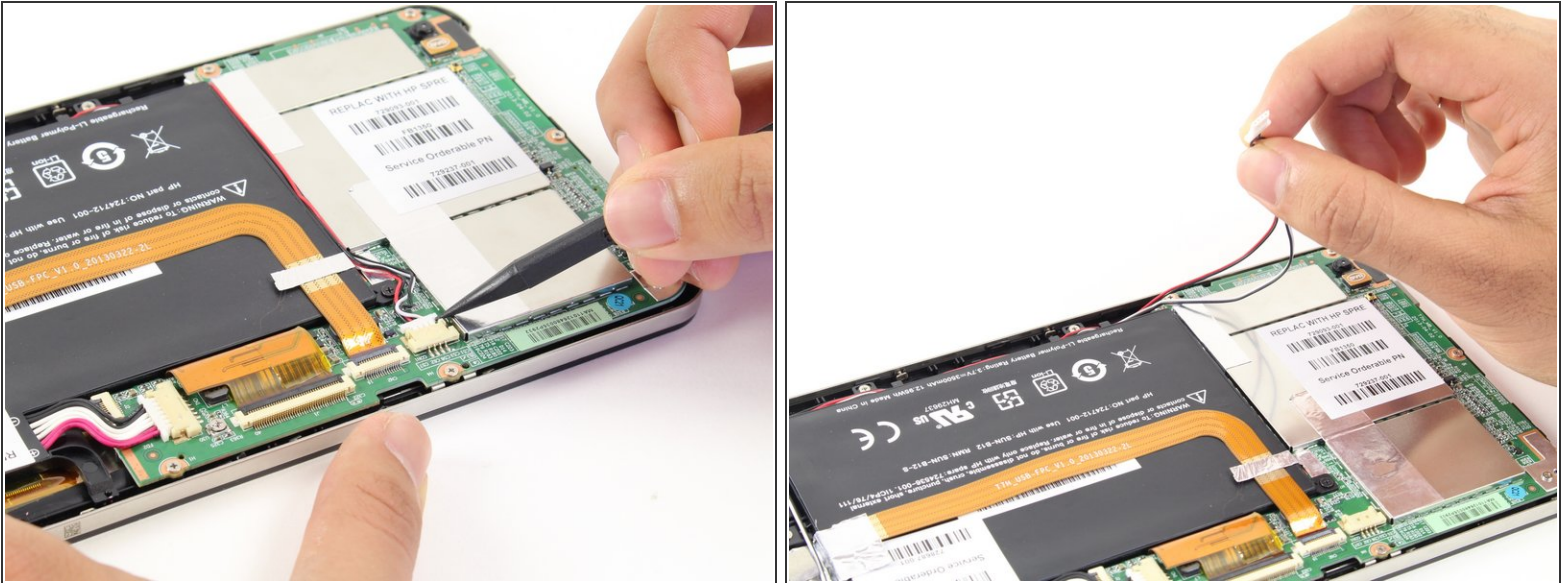
- Remove the rear cover.

Step 5



- Locate and remove the yellow tape covering the red and white speaker wires.

Step 6



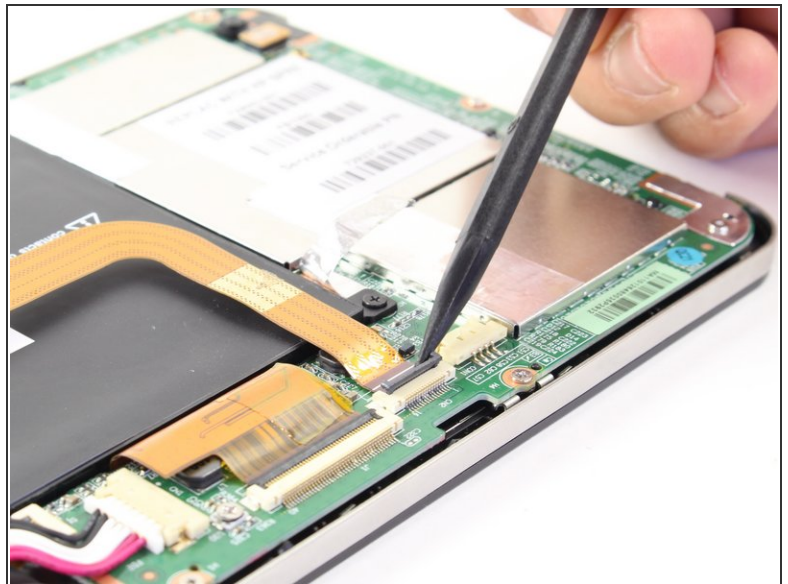
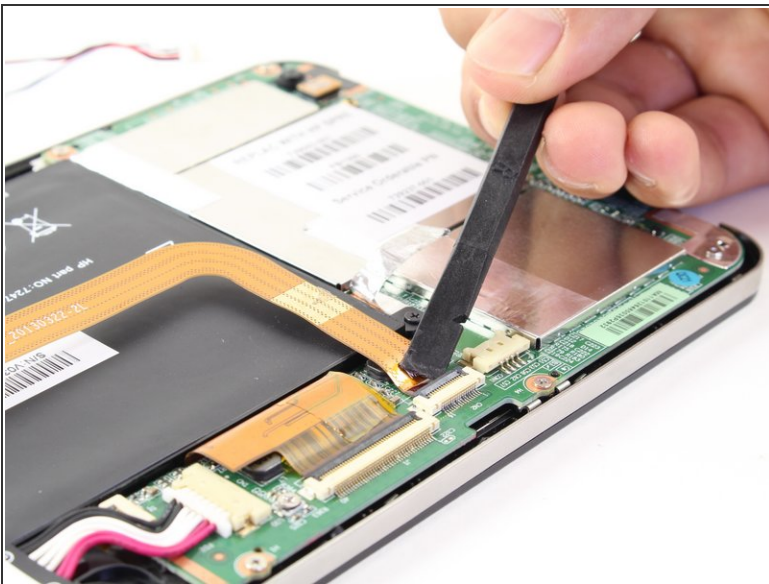
- Using the pointed end of the spudger, push both sides of the speaker wire connector out of its base.
- ⓘ Push the same amount on both sides of the connector to avoid jamming or twisting its metal pins.
- ⚠ Do not yank or pull on the speaker wires, since they are fragile. Only push on the white connector.

Step 7



- Gently pull back the foil covering the gold charging port ribbon.

Step 8



- Using the flat end of the spudger, lift up the black panel covering the charging port connector.
- Gently slide the charging port ribbon out from its housing.
- ❗ It may be easier to use the pointed end of the spudger than your fingers.

Step 9



- Lift gold charging strip away from the battery.

Step 10



- Push the white battery connector out of its housing using the pointed end of the spudger.

Step 11



- Using the #00 Phillips Head screwdriver, remove the 5 screws holding the battery in place.
 - The four 1.75mm x 3mm silver Phillips Head screws circled in red are interchangeable.
 - The black 1.75mm x 4mm Phillips Head screw **must** go back to the same spot during reassembly.

Step 12



- Lift battery out of its place and set aside.

To reassemble your device, follow these instructions in reverse order.