



HP Slate 7 4601 Front Screen Replacement

How to take apart your HP Slate 7 from the back so you can have access to the front screen. This allows you to replace the LCD screen, volume rocker, and power button.

Written By: Ryan O'Neill



INTRODUCTION

The front screen of your HP tablet is the toughest thing to replace - you need to go through the rest of the tablet first, starting at the back and working your way forward. The same goes for the volume buttons. In this guide, you will be removing the following:

1. Back Cover
2. Battery
3. Charging Port
4. Speaker Unit
5. Motherboard
6. Front LCD Screen

Prepare your required tools, a new battery for your tablet, and set aside about 30 to 40 minutes to delve into the inner workings of your HP Slate.



TOOLS:

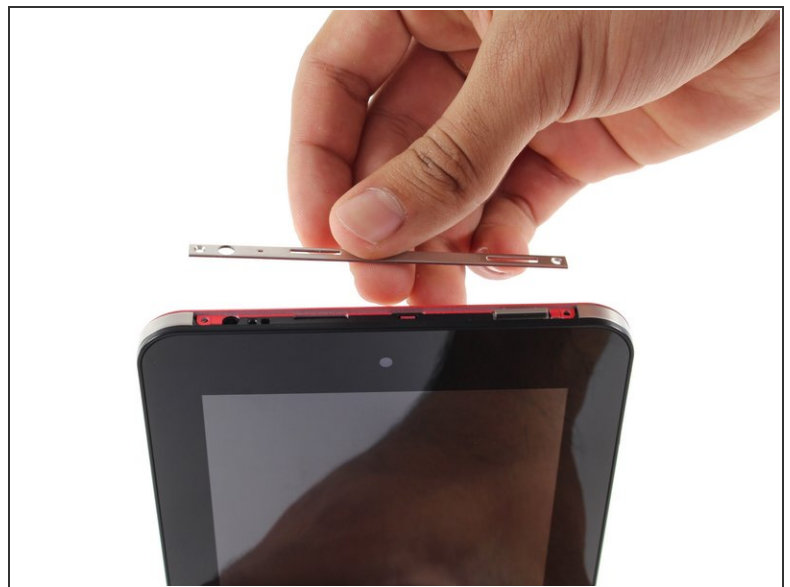
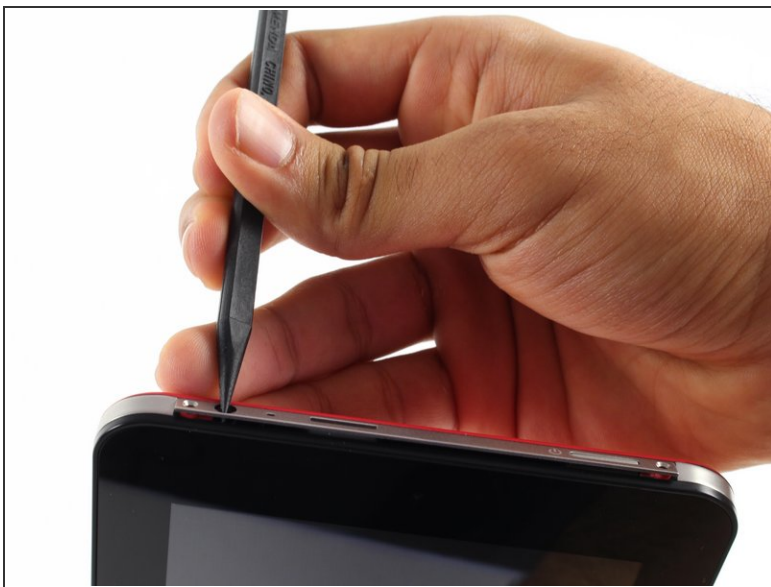
- [Phillips #00 Screwdriver](#) (1)
 - [Spudger](#) (1)
 - [T4 Torx Screwdriver](#) (1)
-

Step 1 — Battery



- Begin your replacement by using a T3 or T4 Torx screwdriver.
 - Remove the two 1.4mm x 3mm Torx Head screws at the top of the device.

Step 2



- With the pointed end of the spudger, remove the thin metal band.
 - ⓘ It is easiest to remove the metal band through the headphone opening.

Step 3



- Using the flat end of the spudger, pry back the rear plastic cover.
- ❗ As you work your way around the edge, several "pop" noises will be made. These noises are caused by the plastic clips coming undone.

Step 4



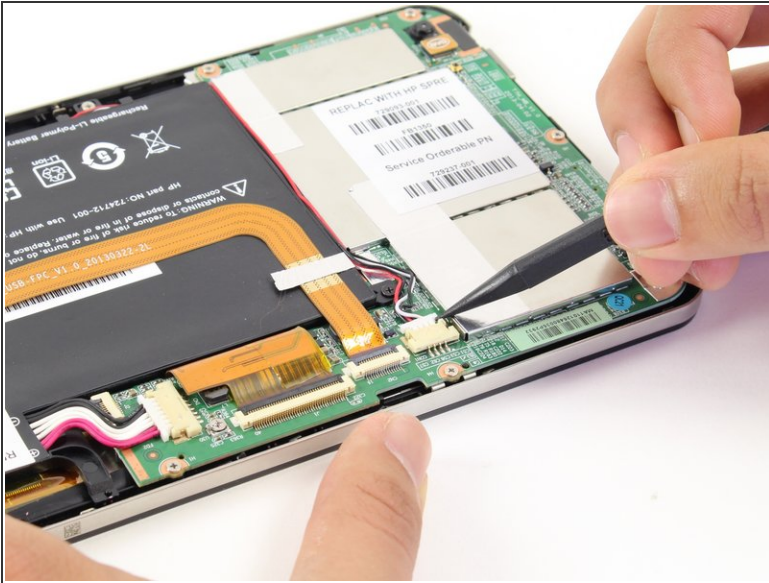
- Remove the rear cover.

Step 5



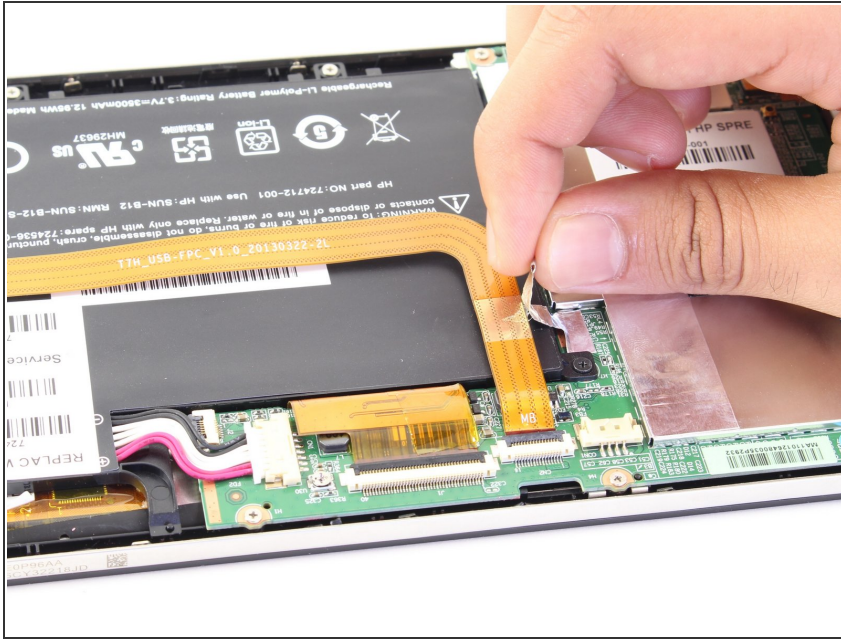
- Locate and remove the yellow tape covering the red and white speaker wires.

Step 6



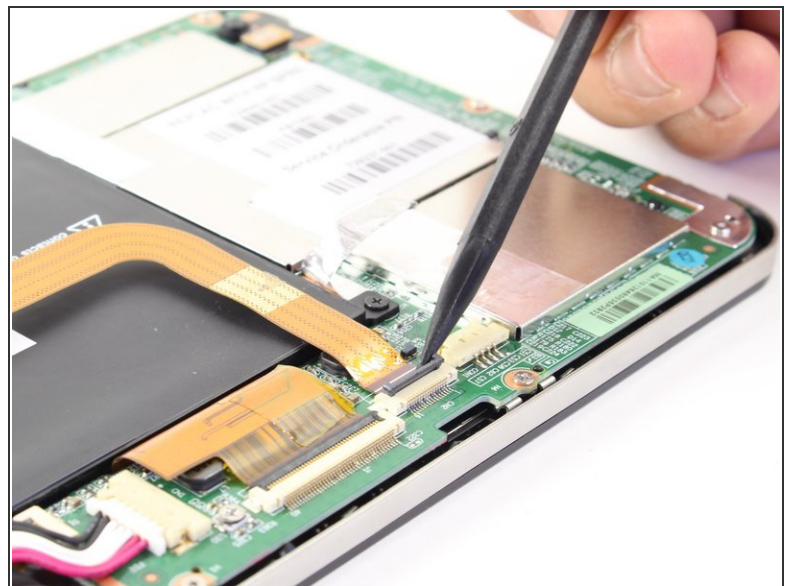
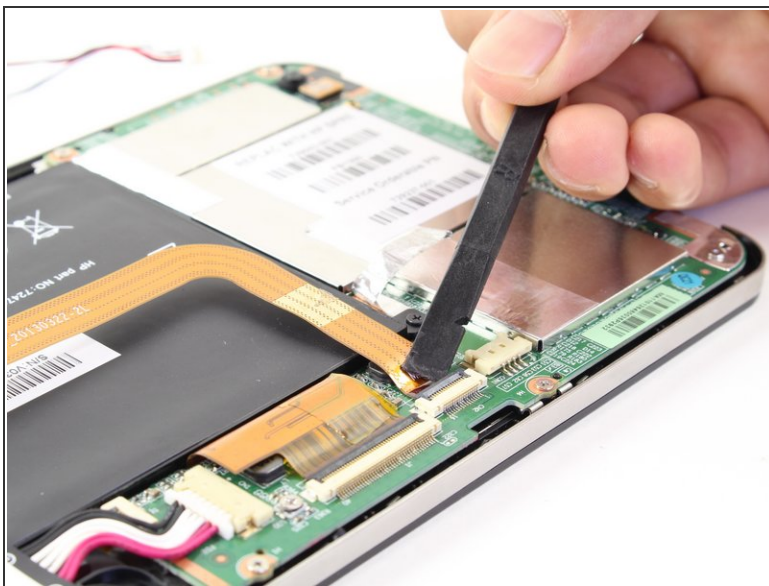
- Using the pointed end of the spudger, push both sides of the speaker wire connector out of its base.
- ⓘ Push the same amount on both sides of the connector to avoid jamming or twisting its metal pins.
- ⚠ Do not yank or pull on the speaker wires, since they are fragile. Only push on the white connector.

Step 7



- Gently pull back the foil covering the gold charging port ribbon.

Step 8



- Using the flat end of the spudger, lift up the black panel covering the charging port connector.
- Gently slide the charging port ribbon out from its housing.
- ❗ It may be easier to use the pointed end of the spudger than your fingers.

Step 9



- Lift gold charging strip away from the battery.

Step 10



- Push the white battery connector out of its housing using the pointed end of the spudger.

Step 11



- Using the #00 Phillips Head screwdriver, remove the 5 screws holding the battery in place.
 - The four 1.75mm x 3mm silver Phillips Head screws circled in red are interchangeable.
 - The black 1.75mm x 4mm Phillips Head screw **must** go back to the same spot during reassembly.

Step 12



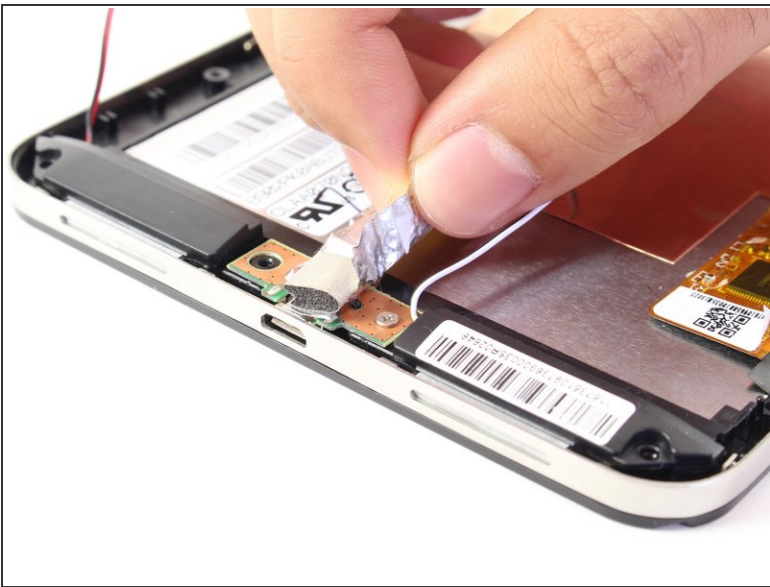
- Lift battery out of its place and set aside.

Step 13 — Charging Port



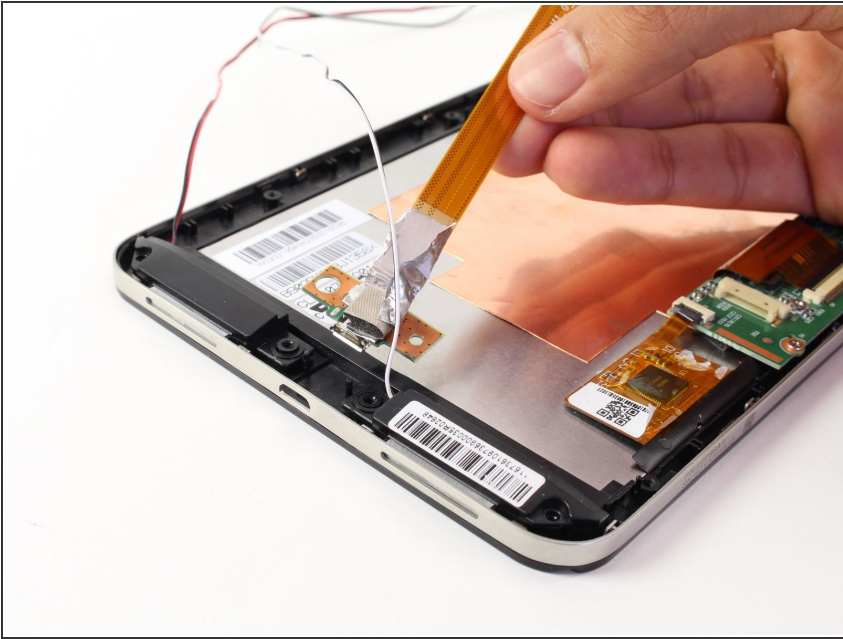
- To free the speaker assembly, you will need a #00 Phillips Head screwdriver.
 - Remove the two 1.75mm x 3mm Phillips Head screws from the speaker assembly.

Step 14



- Pull back the foil overlapping the charging port to reveal another 1.75mm x 3mm Phillips Head screw.
 - Remove the screw with a #00 Phillips Head screwdriver.

Step 15



- Lift the charging port and set it aside.

Step 16 — Speaker



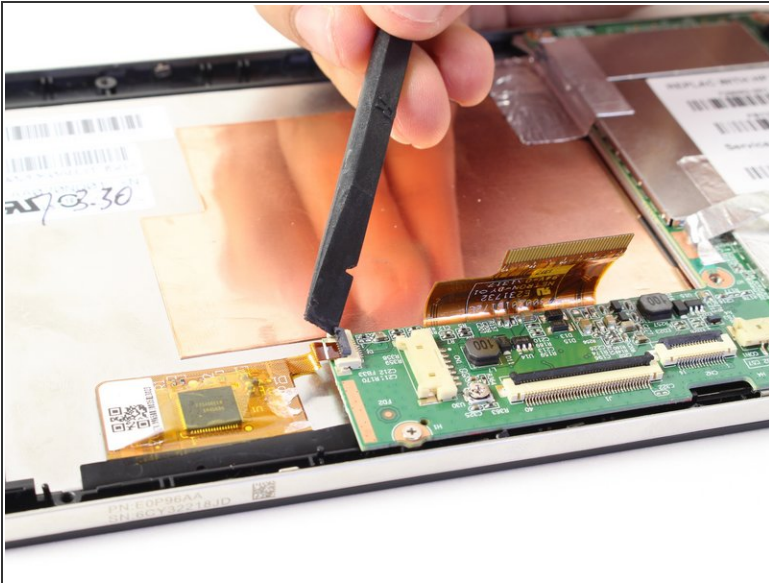
- Lift the two speakers out of the device and set them aside.

Step 17 — Motherboard



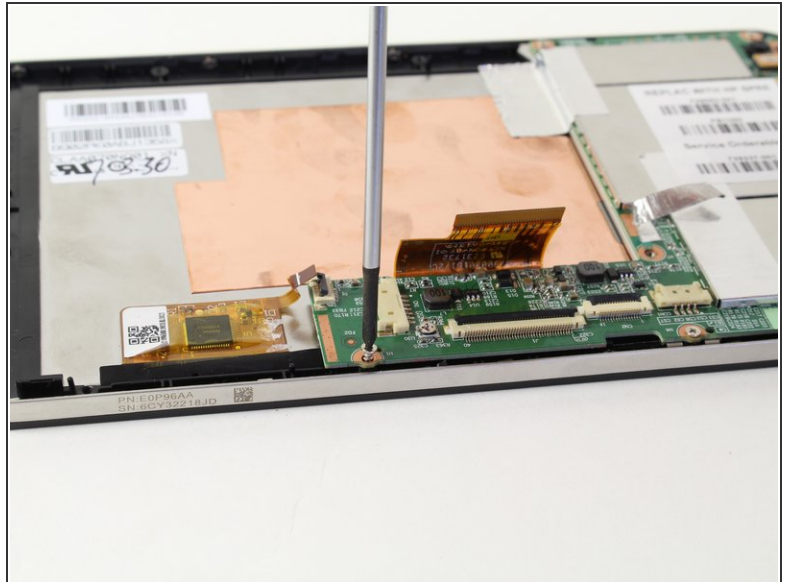
- Disconnect the LCD screen ribbon by lifting up the black panel with the flat end of a spudger and sliding the gold strip out.
- ⓘ When reconnecting the LCD connector ribbon, make sure that it's pushed in all the way. If it isn't, there will be horizontal lines when you power the tablet on.

Step 18



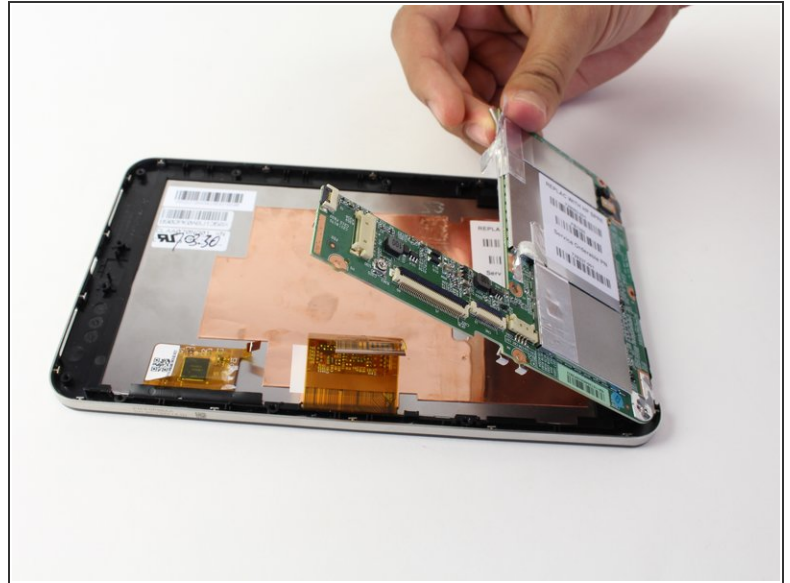
- Likewise, disconnect the square radio chip ribbon by lifting up the black panel with a spudger and sliding the gold strip out.

Step 19



- You will be using a #00 Phillips Head screwdriver to free the motherboard.
 - Remove the six 1.75mm x 3mm Phillips Head screws holding the motherboard to the screen.

Step 20



- Using your hand, lift up the silver tape from the copper plate.
- Lift the motherboard out of the device.
- ❗ You may need to wiggle and work the motherboard to get it released from the device

Step 21 — Front Screen / Volume Buttons



- Remove the metal band surrounding the device by lifting it up out of the placement pins. Begin at one end and work your way around.

Step 22



- You now have access to the LCD screen.
- You can replace the volume rocker by lifting it up and out of the device.
- ☑ The volume rocker should be reinserted so the "up" button is toward the top of the tablet during reassembly.

To reassemble your device, follow these instructions in reverse order.