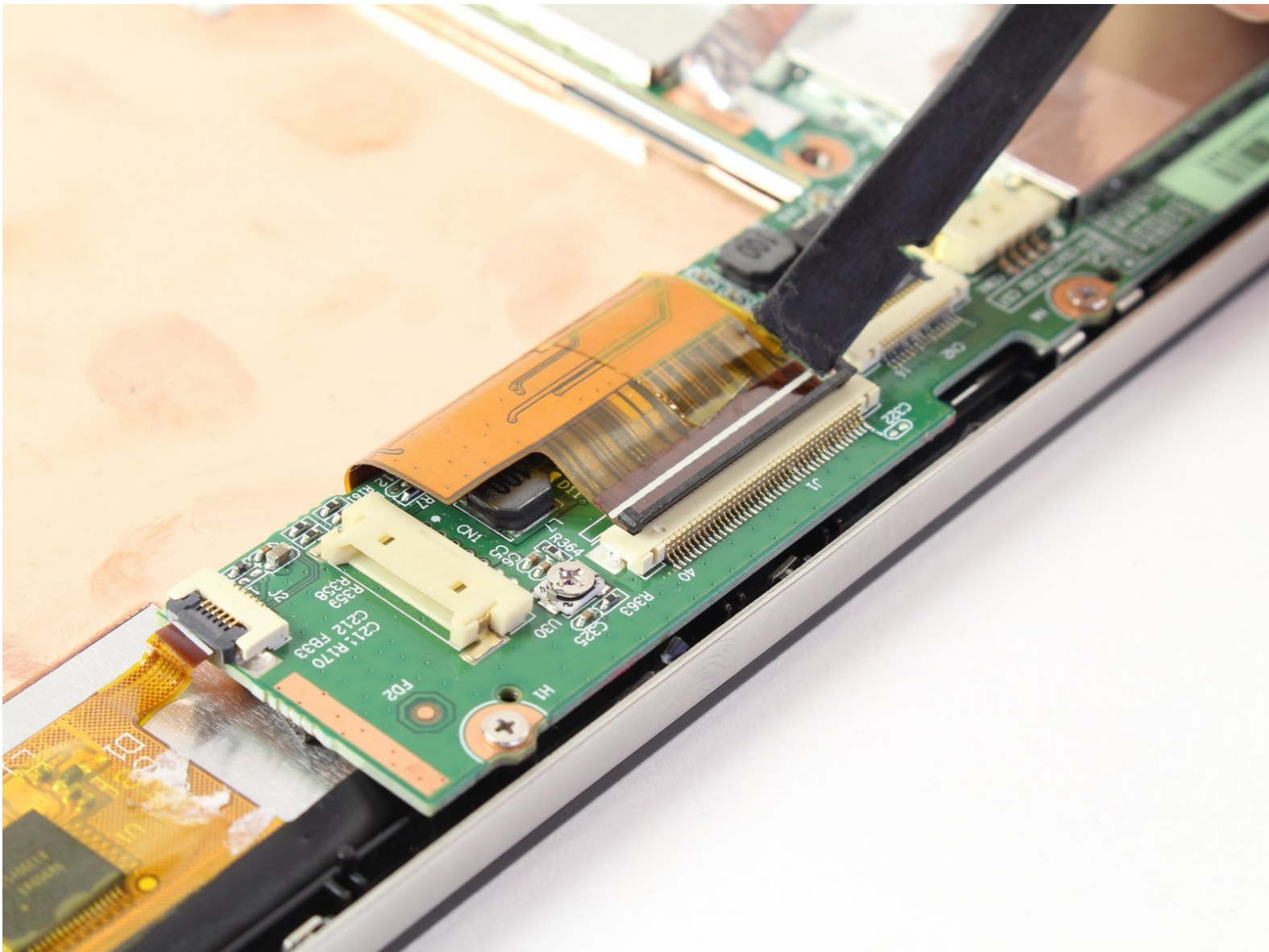




HP Slate 7 4601 Motherboard Replacement

This guide will take you on a pain-free journey to removing the motherboard in the HP Slate 7 4601.

Written By: Davis Muxlow



INTRODUCTION

This device's motherboard is a green, "L"-shaped component internally located against the front screen and beneath the battery. Replacement requires the removal of the battery prior to removing the motherboard and involves the disconnection of two gold ribbons and 6 screws. In this guide, you will be removing the following:

1. Back Cover
2. Battery
3. Charging Port
4. Speaker Unit
5. Motherboard

If the guide steps are accurately followed, replacement should be a breeze. So, prepare your required tools, a new motherboard for your tablet, and set aside about 20 to 30 minutes to delve into the inner workings of your HP Slate.



TOOLS:

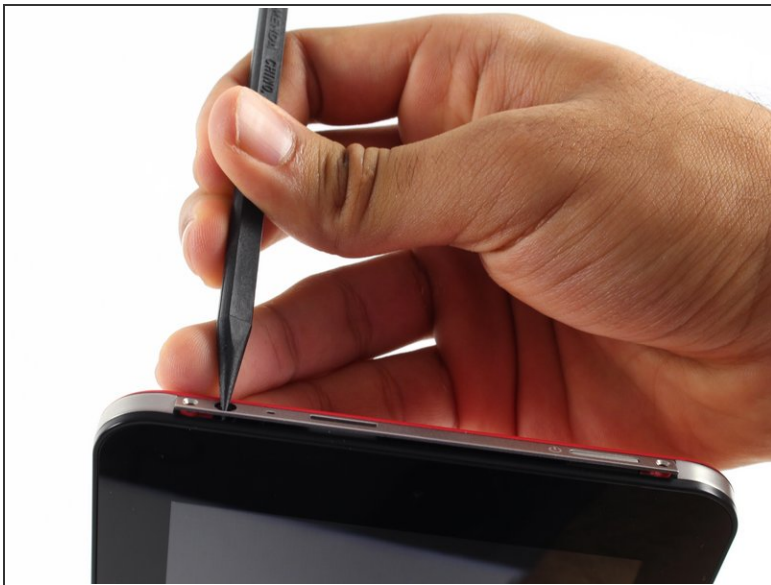
- [Phillips #00 Screwdriver](#) (1)
 - [Spudger](#) (1)
 - [T4 Torx Screwdriver](#) (1)
-

Step 1 — Battery



- Begin your replacement by using a T3 or T4 Torx screwdriver.
 - Remove the two 1.4mm x 3mm Torx Head screws at the top of the device.

Step 2



- With the pointed end of the spudger, remove the thin metal band.
 - ⓘ It is easiest to remove the metal band through the headphone opening.

Step 3



- Using the flat end of the spudger, pry back the rear plastic cover.
- ① As you work your way around the edge, several "pop" noises will be made. These noises are caused by the plastic clips coming undone.

Step 4



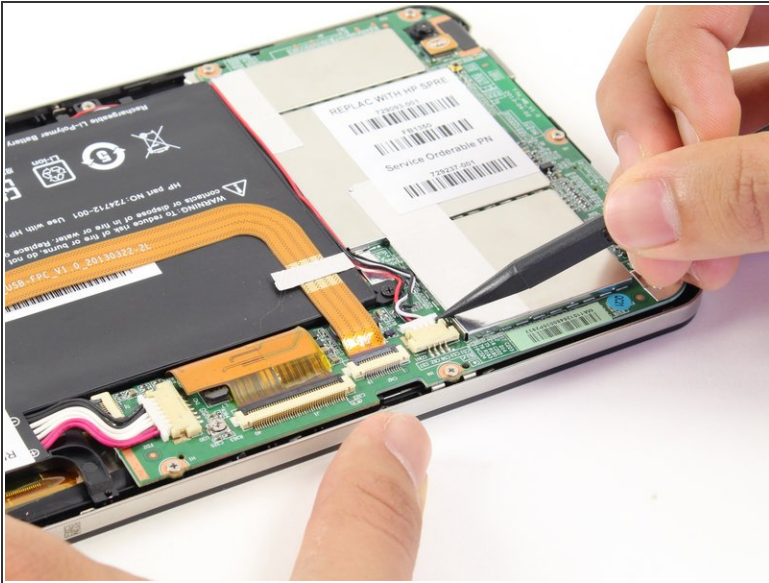
- Remove the rear cover.

Step 5



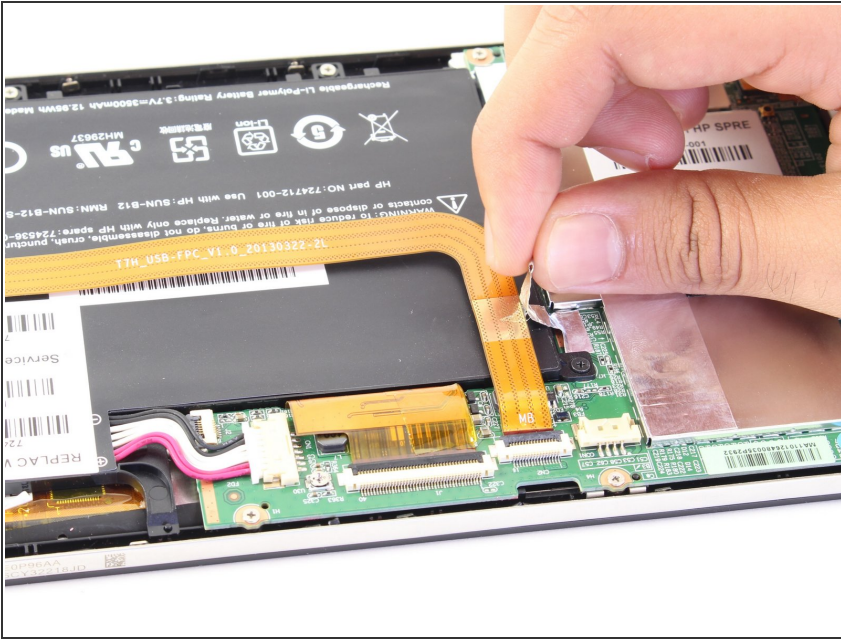
- Locate and remove the yellow tape covering the red and white speaker wires.

Step 6



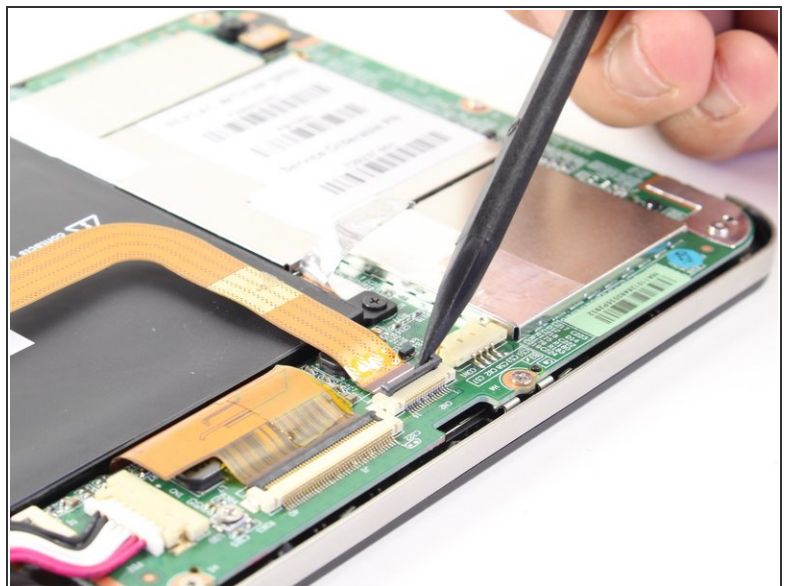
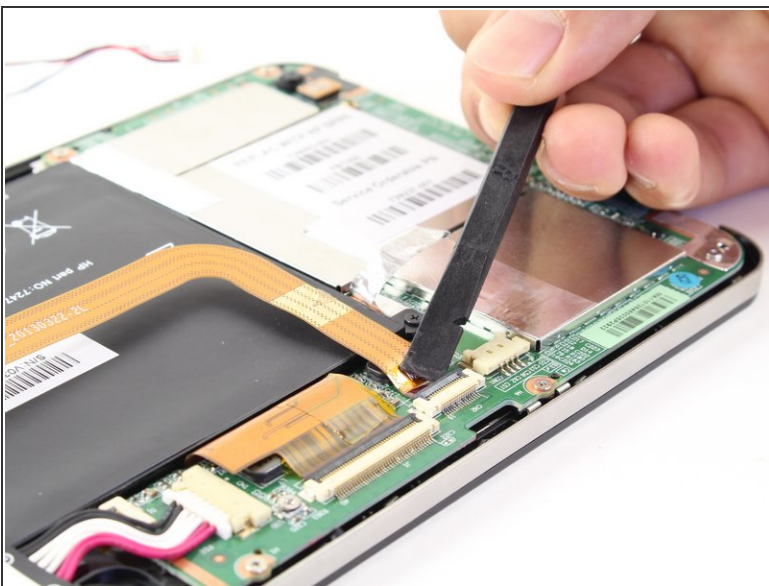
- Using the pointed end of the spudger, push both sides of the speaker wire connector out of its base.
- ⓘ Push the same amount on both sides of the connector to avoid jamming or twisting its metal pins.
- ⚠ Do not yank or pull on the speaker wires, since they are fragile. Only push on the white connector.

Step 7



- Gently pull back the foil covering the gold charging port ribbon.

Step 8



- Using the flat end of the spudger, lift up the black panel covering the charging port connector.
- Gently slide the charging port ribbon out from its housing.
- ❗ It may be easier to use the pointed end of the spudger than your fingers.

Step 9



- Lift gold charging strip away from the battery.

Step 10



- Push the white battery connector out of its housing using the pointed end of the spudger.

Step 11



- Using the #00 Phillips Head screwdriver, remove the 5 screws holding the battery in place.
 - The four 1.75mm x 3mm silver Phillips Head screws circled in red are interchangeable.
 - The black 1.75mm x 4mm Phillips Head screw **must** go back to the same spot during reassembly.

Step 12



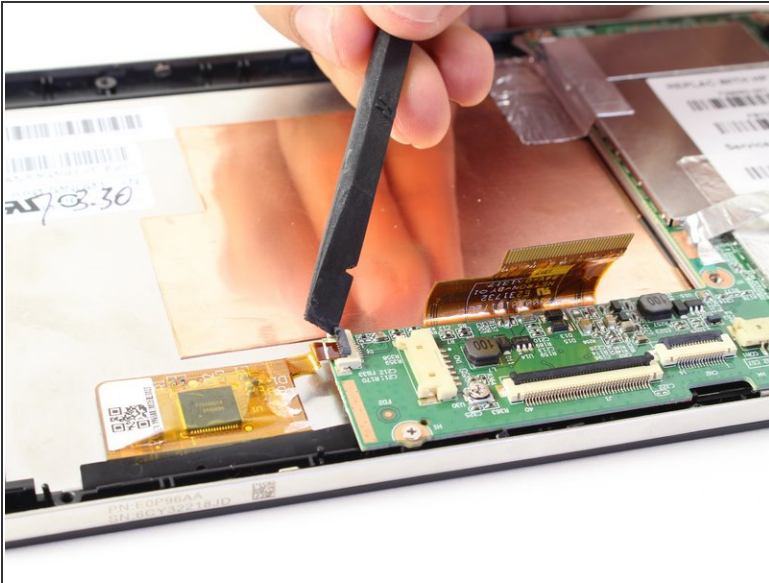
- Lift battery out of its place and set aside.

Step 13 — Motherboard



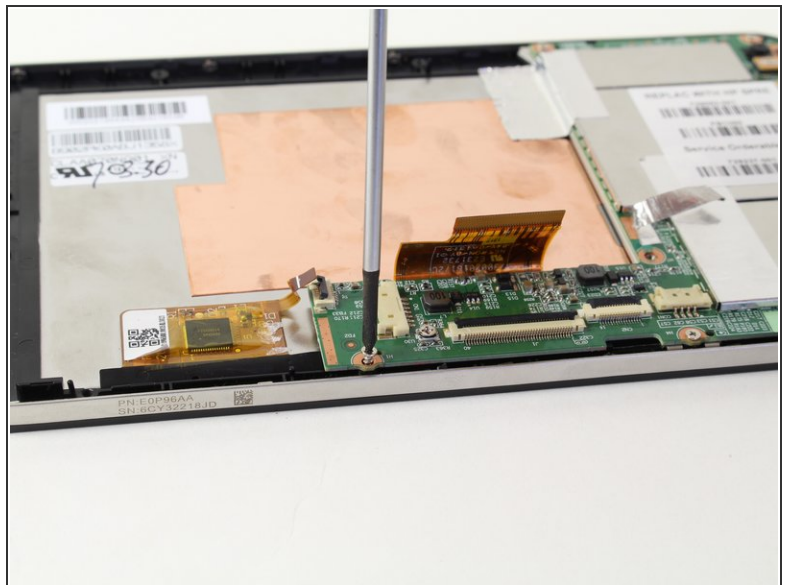
- Disconnect the LCD screen ribbon by lifting up the black panel with the flat end of a spudger and sliding the gold strip out.
- ⓘ When reconnecting the LCD connector ribbon, make sure that it's pushed in all the way. If it isn't, there will be horizontal lines when you power the tablet on.

Step 14



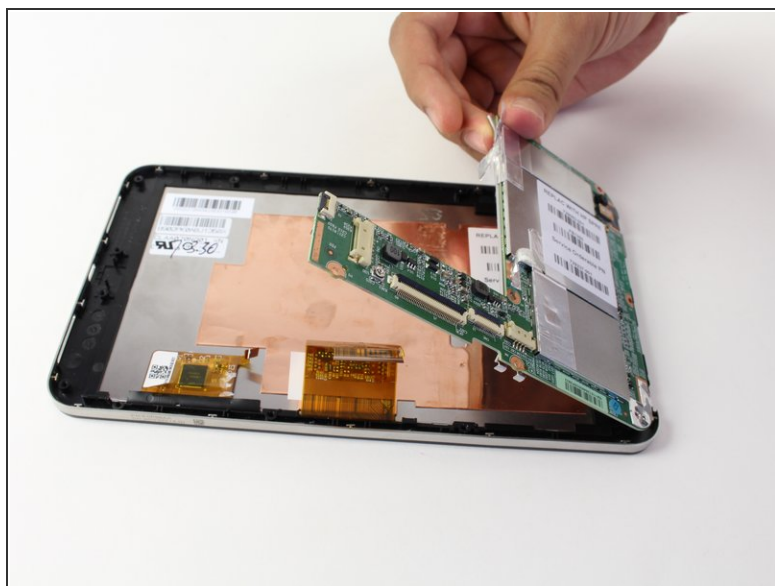
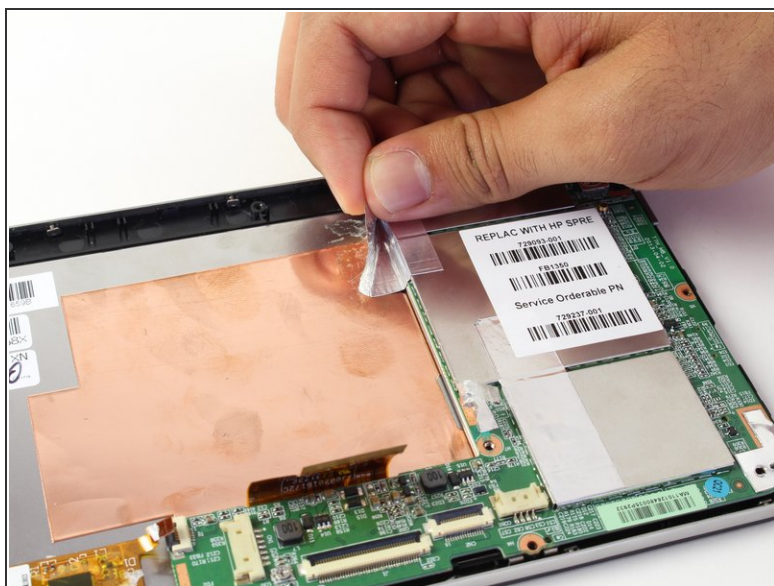
- Likewise, disconnect the square radio chip ribbon by lifting up the black panel with a spudger and sliding the gold strip out.

Step 15



- You will be using a #00 Phillips Head screwdriver to free the motherboard.
 - Remove the six 1.75mm x 3mm Phillips Head screws holding the motherboard to the screen.

Step 16



- Using your hand, lift up the silver tape from the copper plate.
- Lift the motherboard out of the device.
- ⓘ You may need to wiggle and work the motherboard to get it released from the device

To reassemble your device, follow these instructions in reverse order.