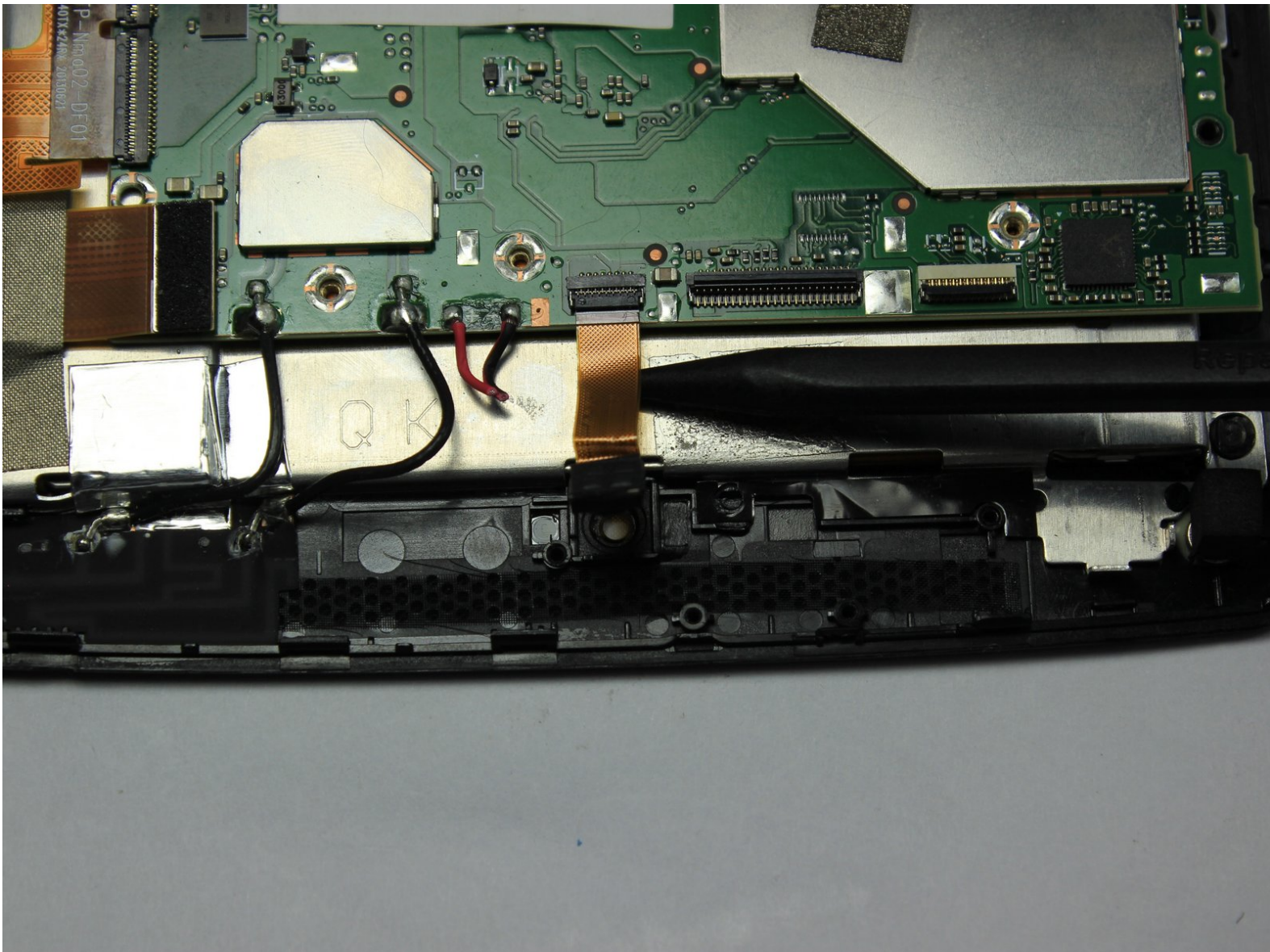




HP Slate 7 Extreme 4400US Front-facing Camera Replacement

This guide will present the steps needed to replace the rear-facing camera on the HP Slate 7 Extreme 4400 US tablet.

Written By: Brandon Ko

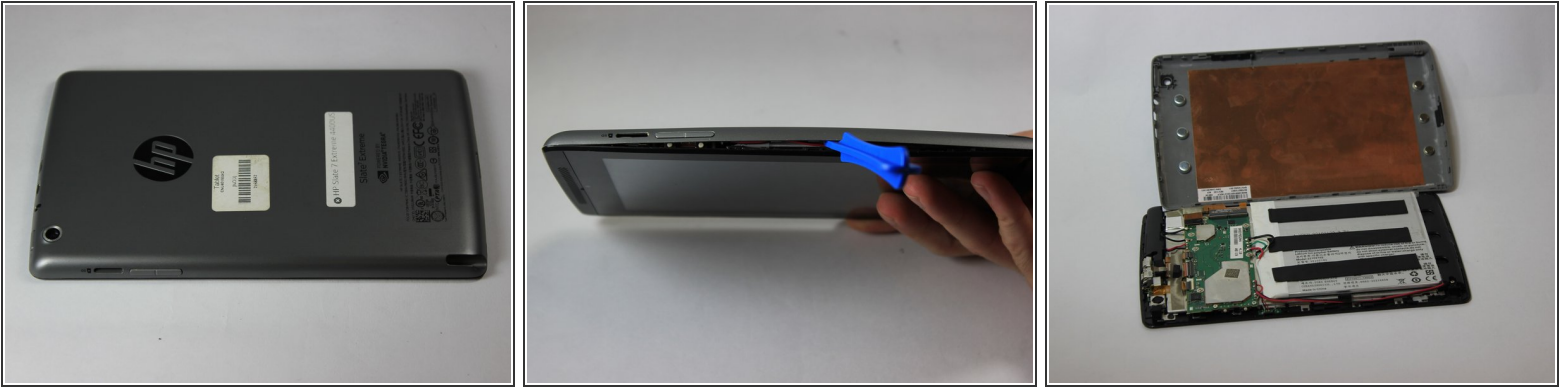




TOOLS:

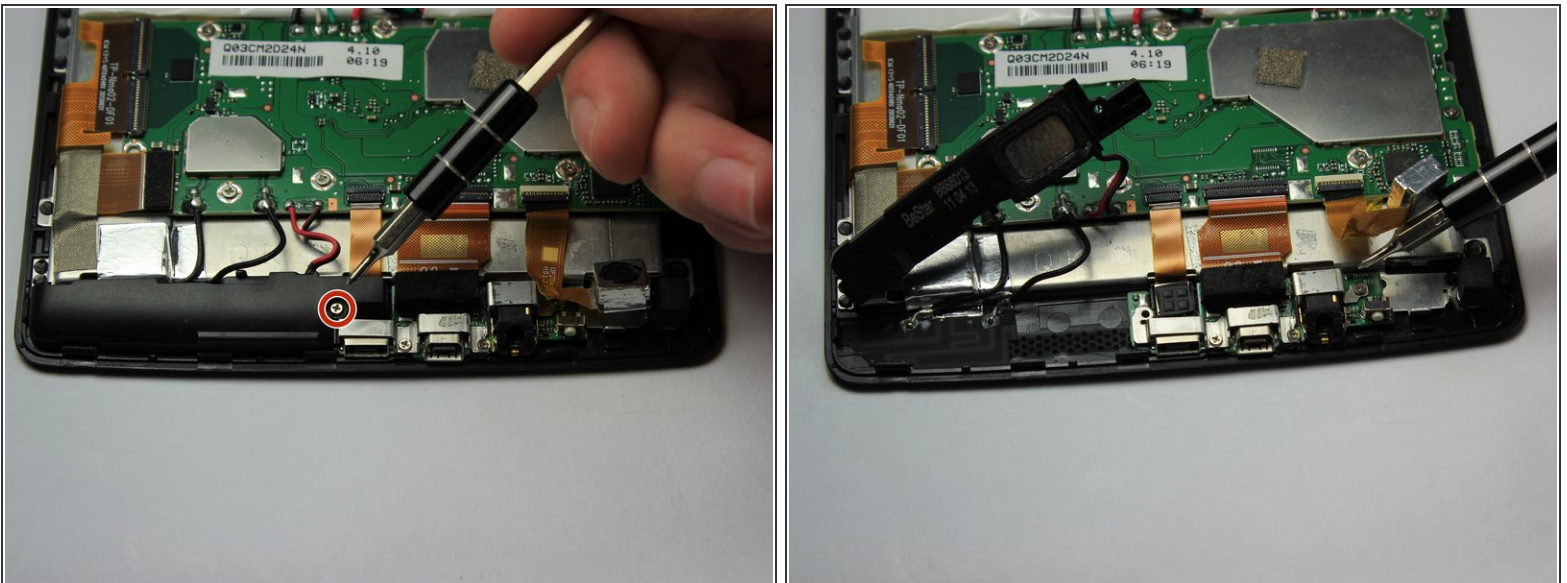
- [iFixit Opening Tools](#) (1)
- [Spudger](#) (1)
- [Phillips #000 Screwdriver](#) (1)

Step 1 — Back Cover



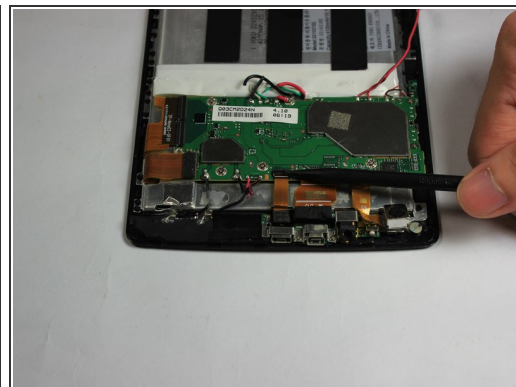
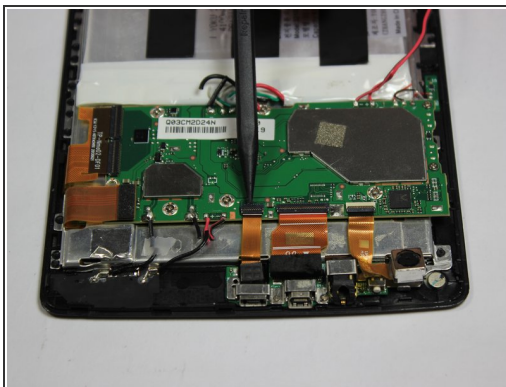
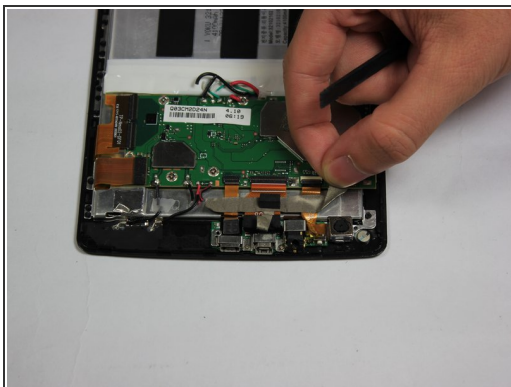
- Use the plastic opening tool to separate the back cover from the tablet. Carefully use the tool to pry open the sides, going around the entire tablet to lift the sides up.
- Once all sides have been pried up, pull the cover off and place it to the side.

Step 2 — Front-facing Camera



- Use the PH #000 screw bit to remove the 5.0 mm screw holding down the top speaker to expose the front-facing camera.

Step 3



- Pull back the tape holding the the front facing camera's connector strip to the device.
- Use the nylon spudger to flip up the black retaining flap of the zero insertion force (ZIF) connector holding the strip in place.
- Gently pull the camera's connecting strip out from the port.

To reassemble your device, follow these instructions in reverse order.