



HP Slate 7 Plus 4200US System Board Replacement

Use this guide to replace the system board on the HP Slate 7 Plus.

Written By: Jessica Andrade

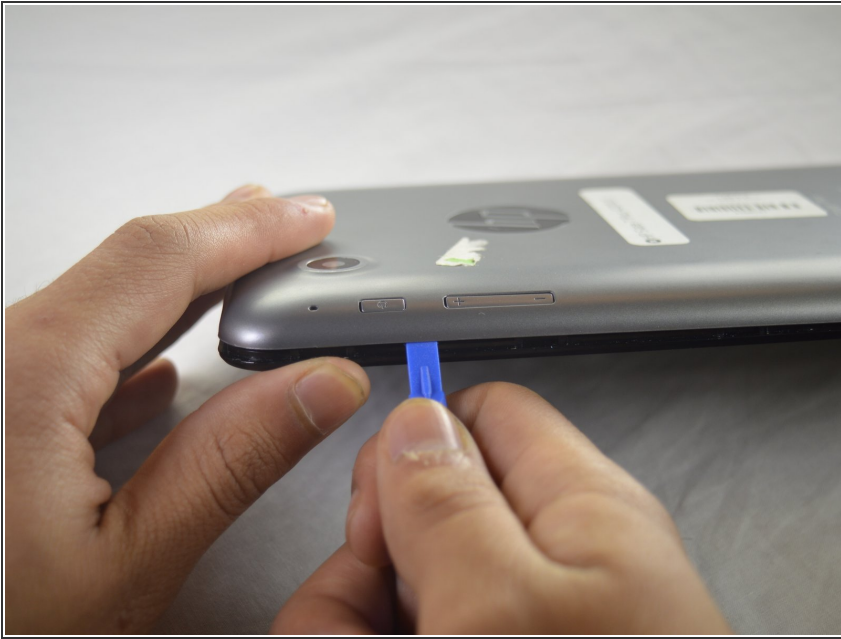




TOOLS:

- [Spudger](#) (1)
- [Soldering Iron](#) (1)
- [iFixit Opening Tools](#) (1)
- [Tweezers](#) (1)
- [Phillips #00 Screwdriver](#) (1)

Step 1 — Tablet Cover



- Turn off the tablet and disconnect the power and all external devices from the tablet.
- Position the tablet with the display panel down and the right side toward you.
- Carefully insert a plastic opening tool between the tablet cover and display panel assembly, separating the two components. The first insertion point should be between the power button and the volume buttons.

Step 2



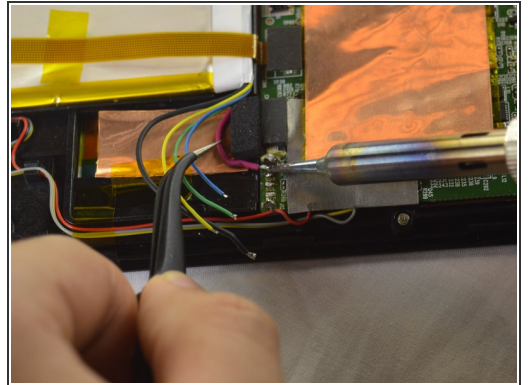
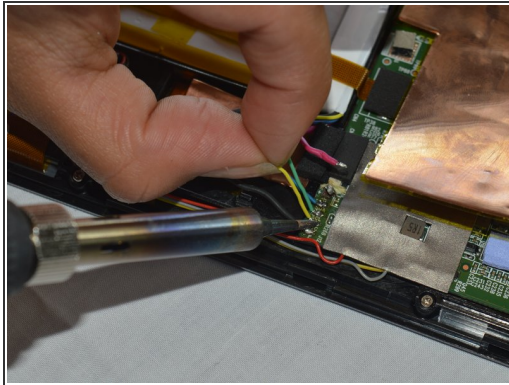
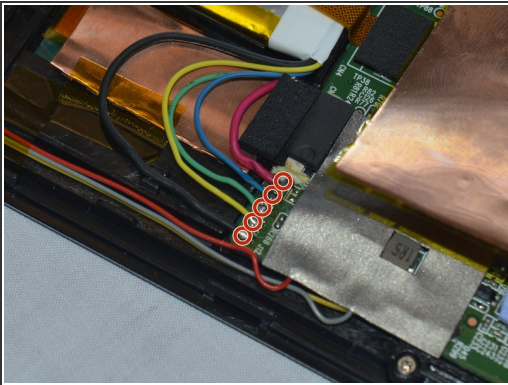
- Slide the tool around the perimeter of the tablet until the edge of the cover is completely separated from the display panel assembly.

Step 3



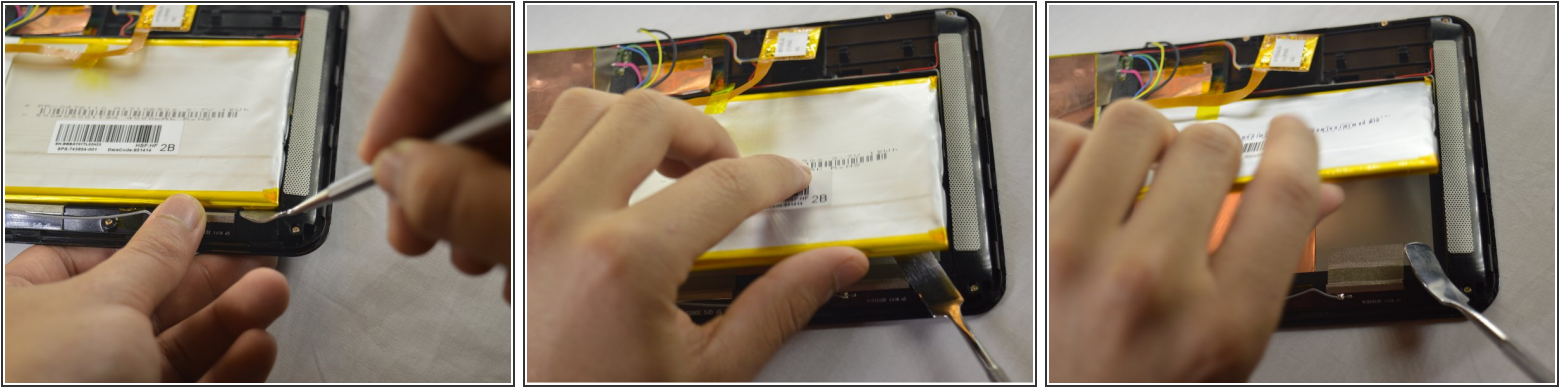
- Pry open the back cover to take it off.

Step 4 — Battery



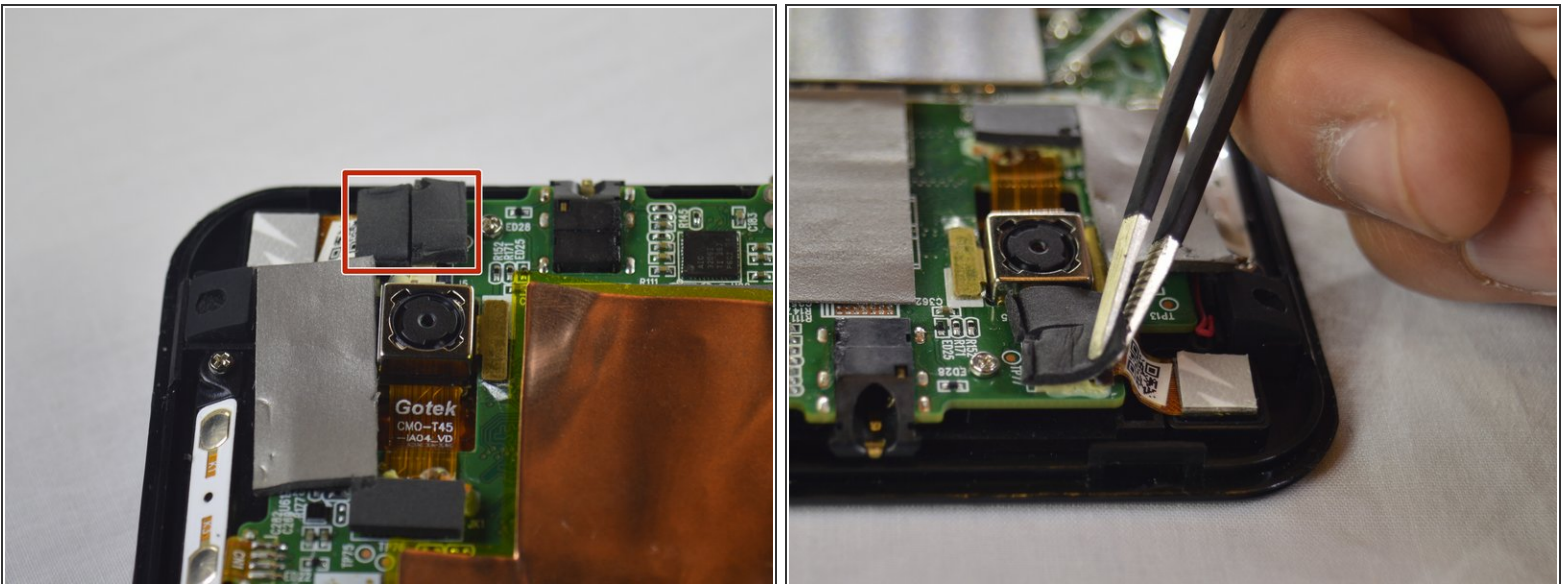
- Disconnect the battery cables from the system board by desoldering them. See [iFixit guide on how to solder](#).
- ⓘ The battery cables are soldered to the system in the following sequence, top to bottom: red, blue, green, yellow, black.

Step 5



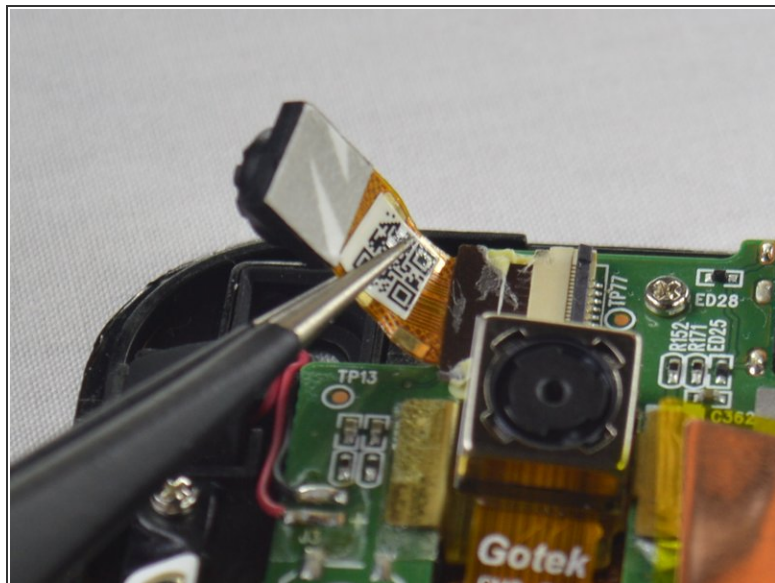
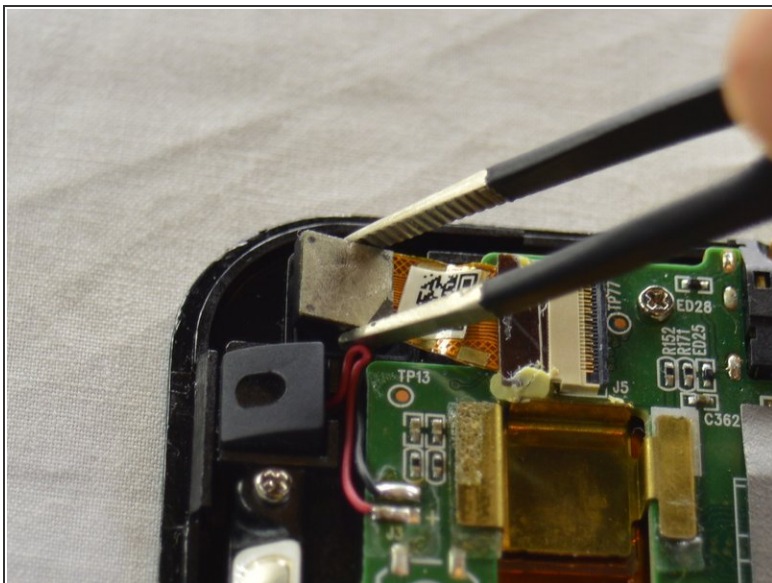
- Insert a nylon spudger between the battery and the display panel assembly. Carefully pry the battery up and remove it from its place.
- ⓘ The battery is attached to the display panel assembly with double-sided adhesive. Make sure to firmly pull the battery.
- ⚠ The regular black nylon spudger should be used whenever possible, especially around batteries.

Step 6 — Front Facing Webcam



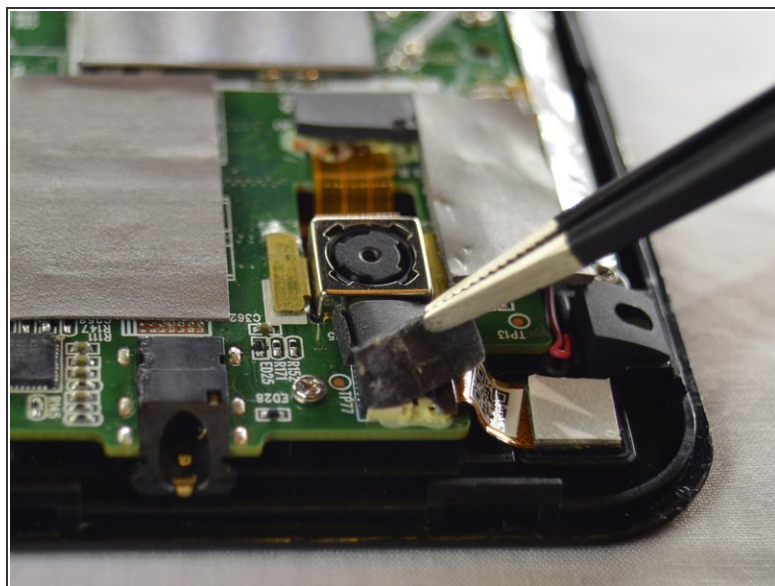
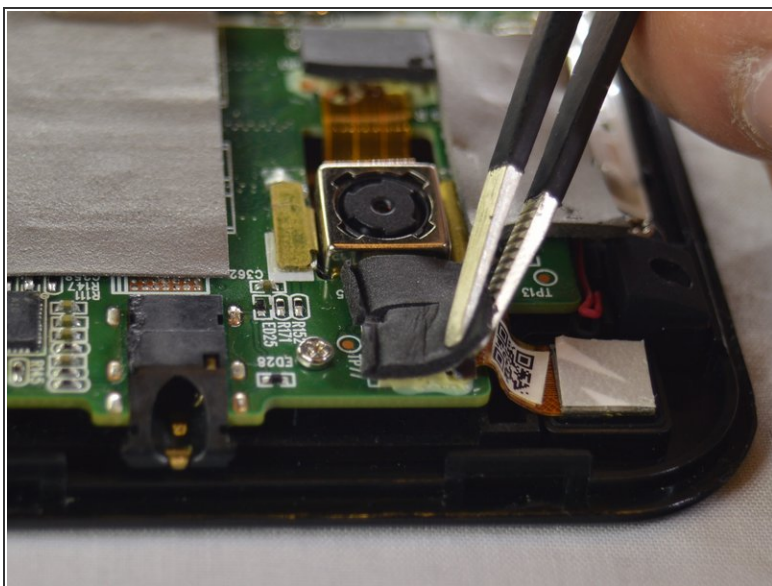
- Use tweezers to remove the black foam stickers from the front facing camera to expose the wiring.

Step 7



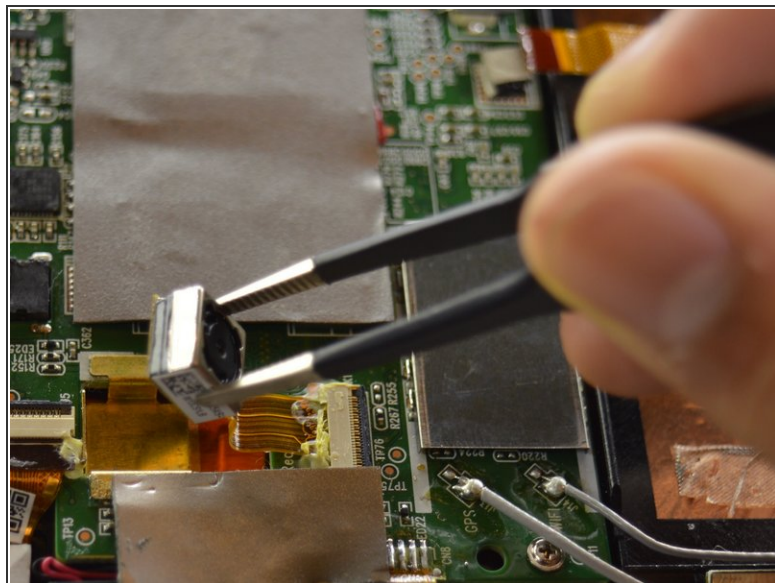
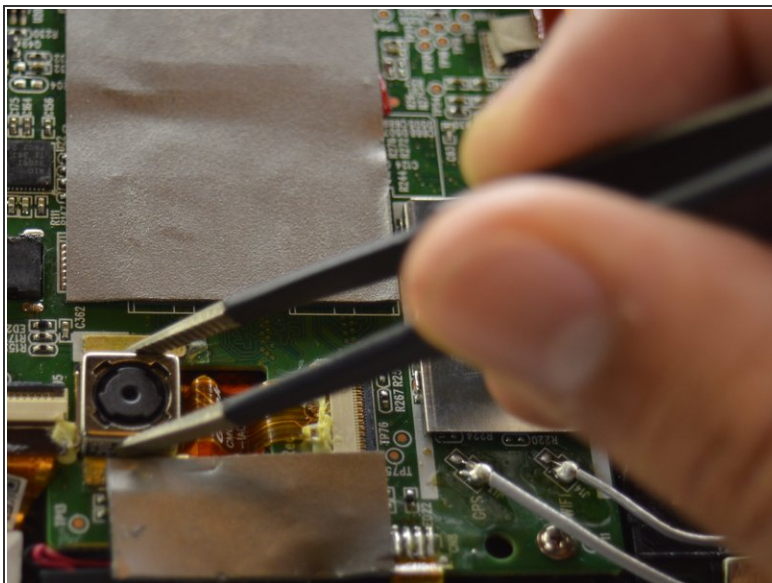
- Lift the camera out from system board and firmly pull the wire out from the connector.

Step 8 — Rear Facing Webcam



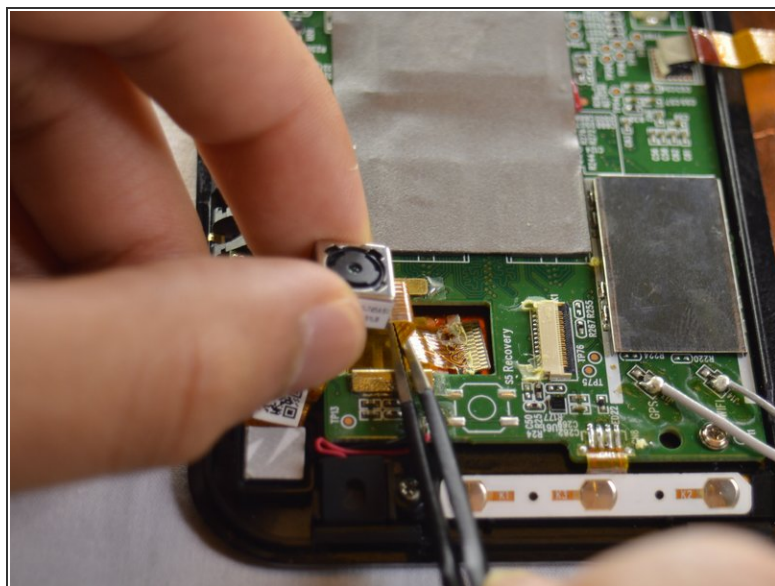
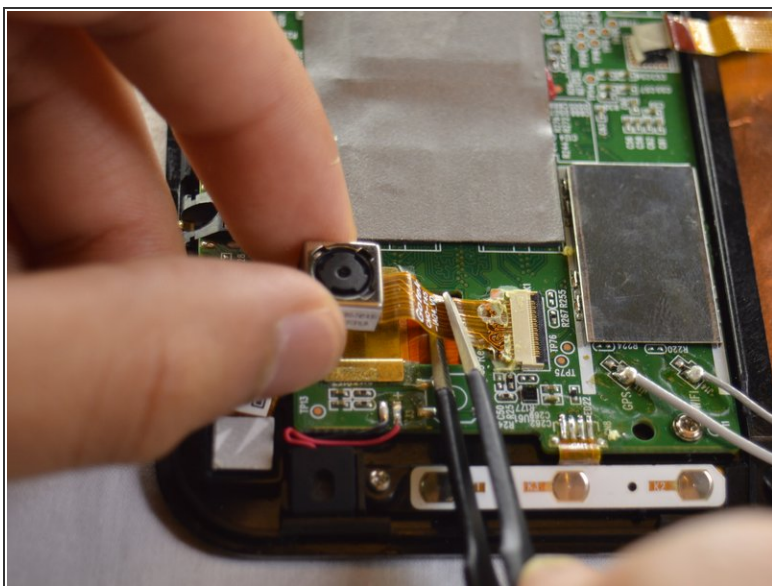
- Use the tweezers to remove the black foam stickers from the rear facing camera to expose the wiring.

Step 9



- Using tweezers, lift the camera out from system board.

Step 10



- Use tweezers to pull the wire out from the connector. Pull away from the connector, parallel to the tablet.

Step 11 — System Board



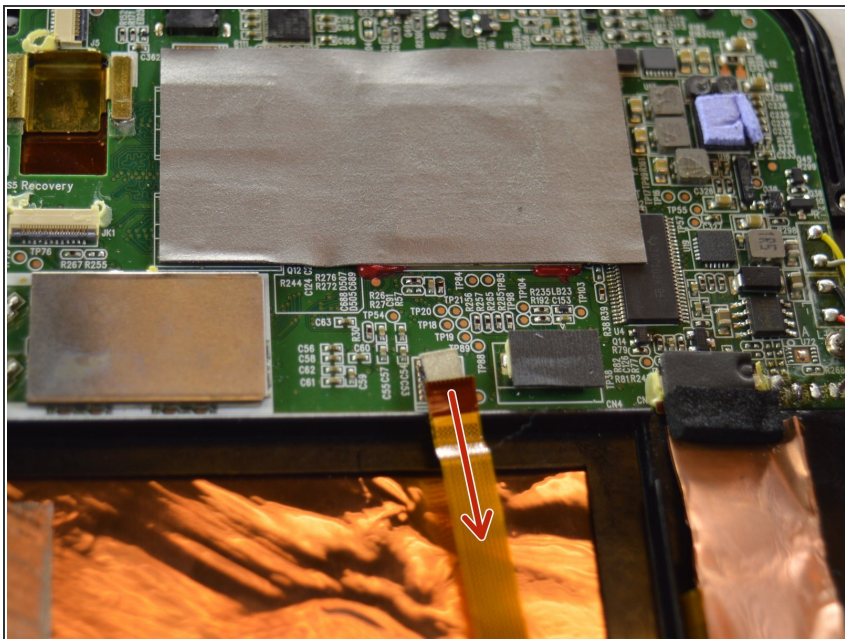
- Remove the four screws from the motherboard using a Phillips 00 screwdriver.

Step 12



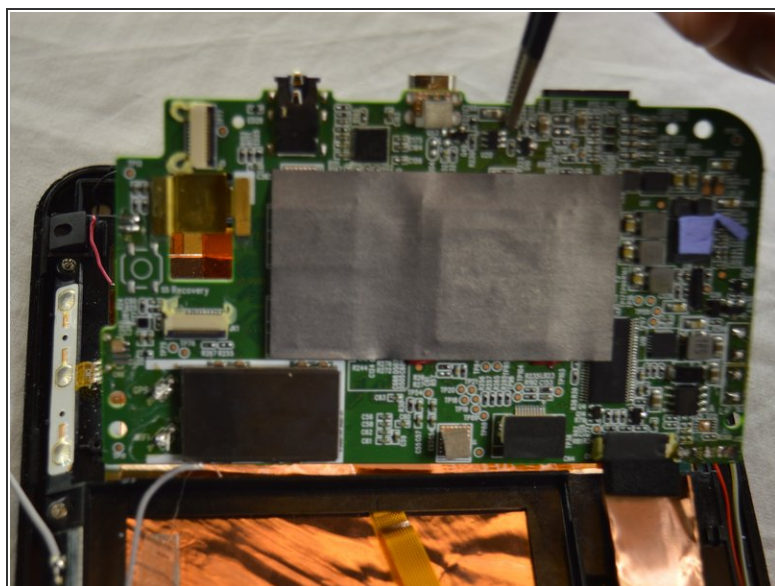
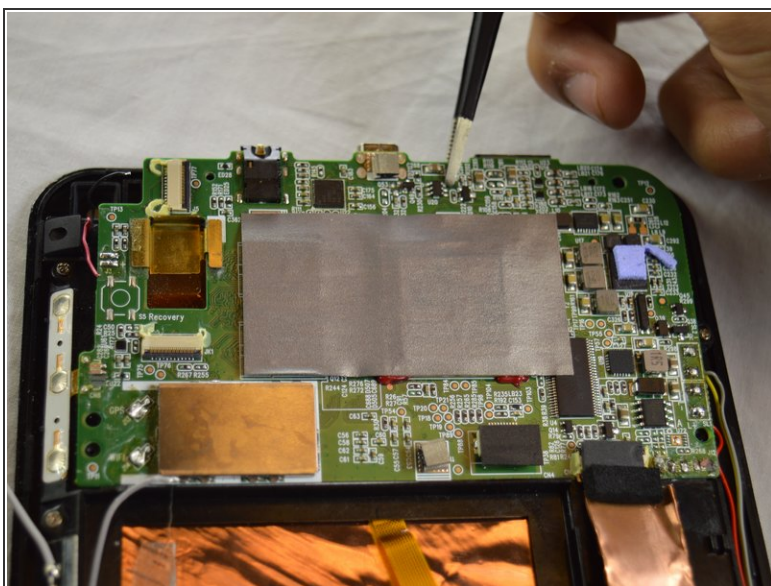
- Remove the two grey wires on the left and the four multicolored wires on the right by desoldering them. See [iFixit guide on how to solder](#).
- ⓘ The multicolored wires are in soldered in order from top to bottom in the following order: yellow, grey, black, and red.

Step 13



- Disconnect the LCD wire from the connector by pulling away from the connector, parallel to the tablet.

Step 14



- Using tweezers, lift the system board and remove it.

To reassemble your device, follow these instructions in reverse order.