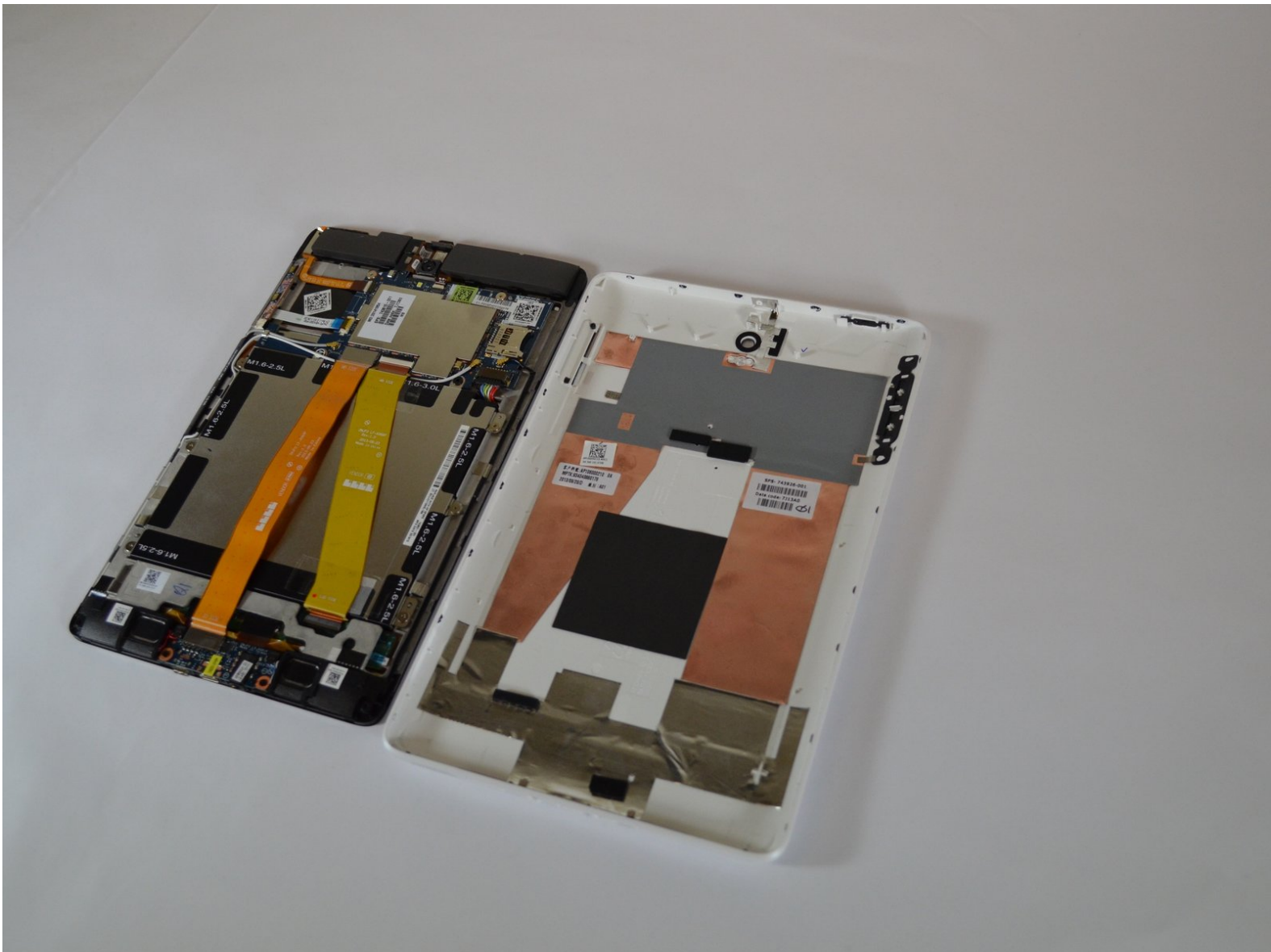




HP Slate 8 Pro Antenna Replacement

This guide should help you out on how to go about replacing an antenna on a HP Slate 8 Pro.

Written By: Jose Revelo



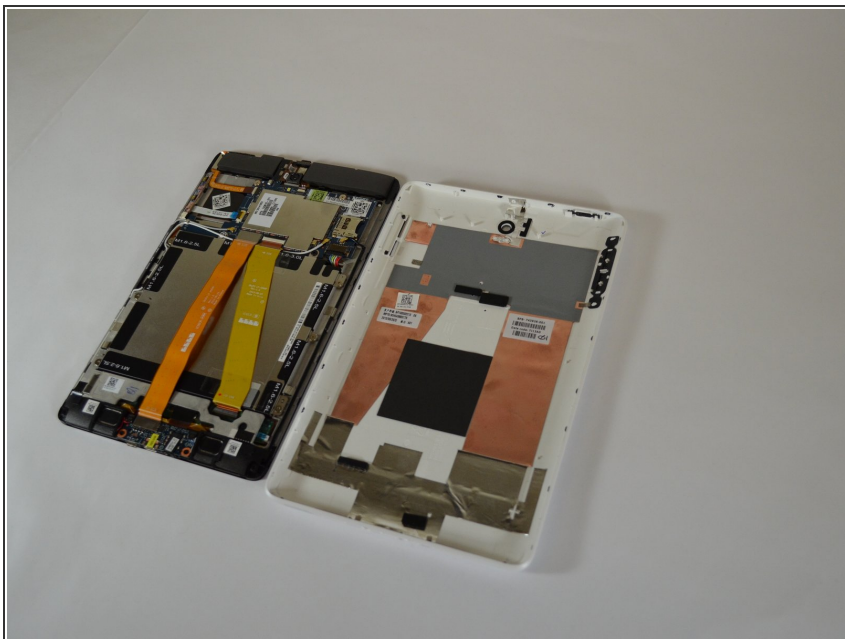
INTRODUCTION

Overall the step by step guide will provide you with information on how to go about replacing an antenna on the HP Slate 8 Pro if wifi is not working properly or signal is low.

TOOLS:

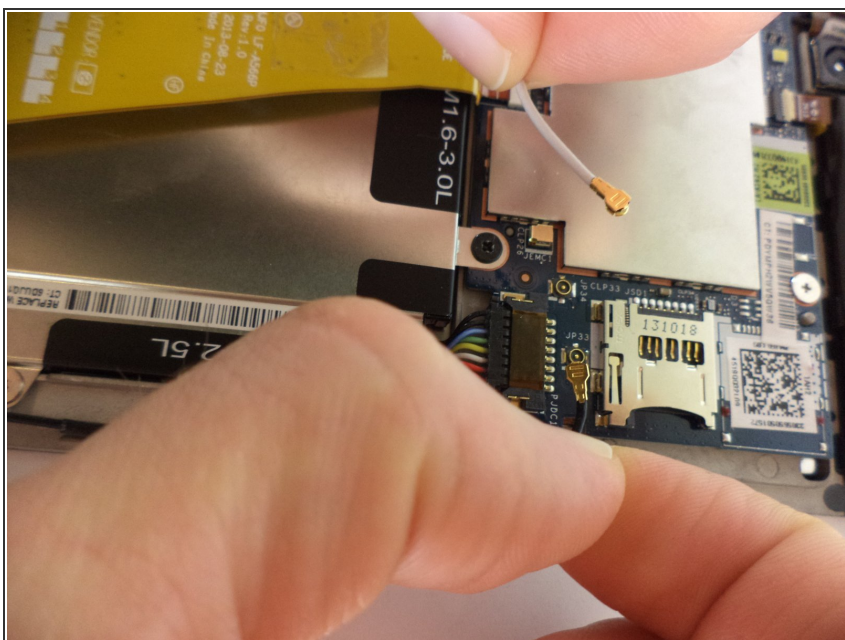
- [iFixit Opening Tools](#) (1)
-

Step 1 — Remove the back cover



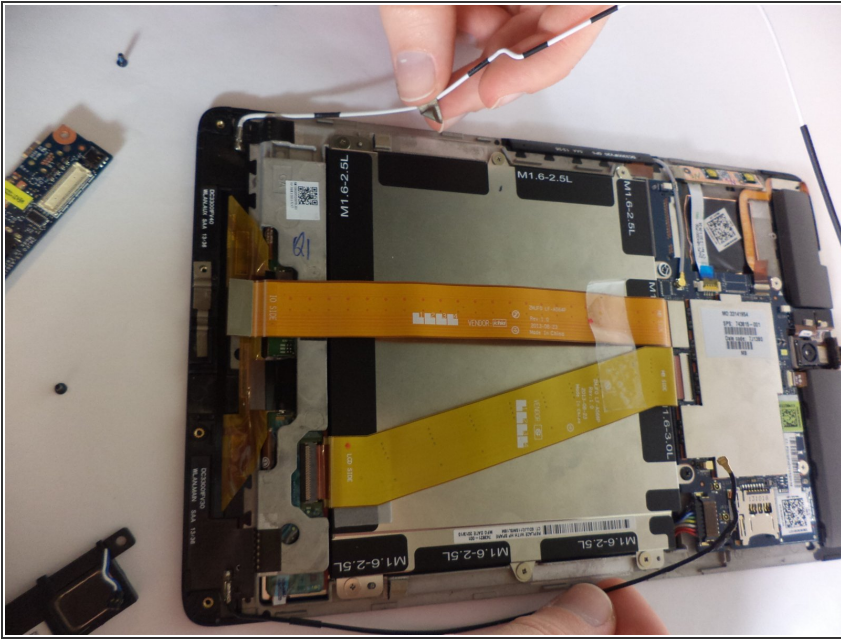
- Use plastic tool to remove the back cover.

Step 2 — Detach Wi-Fi cable from clips



- Release the Wi-Fi antenna cable from the routing clips and channel from the main board.

Step 3 — Detach the Wi-Fi antenna



- Detach the Wi-Fi antenna from the main board.

Step 4 — Detach Wi-Fi antenna from panel assembly.



- Detach the Wi-Fi antenna transceiver from the display panel assembly that is attached with adhesive.

To reassemble your device, follow these instructions in reverse order.