



HP Slate 8 Pro IO Board Replacement

The IO board is in charge of the auxiliary box, charger and HDMI. If you are having problems with any of these devices, you should consider replacing the IO board.

Written By: Claudia



INTRODUCTION

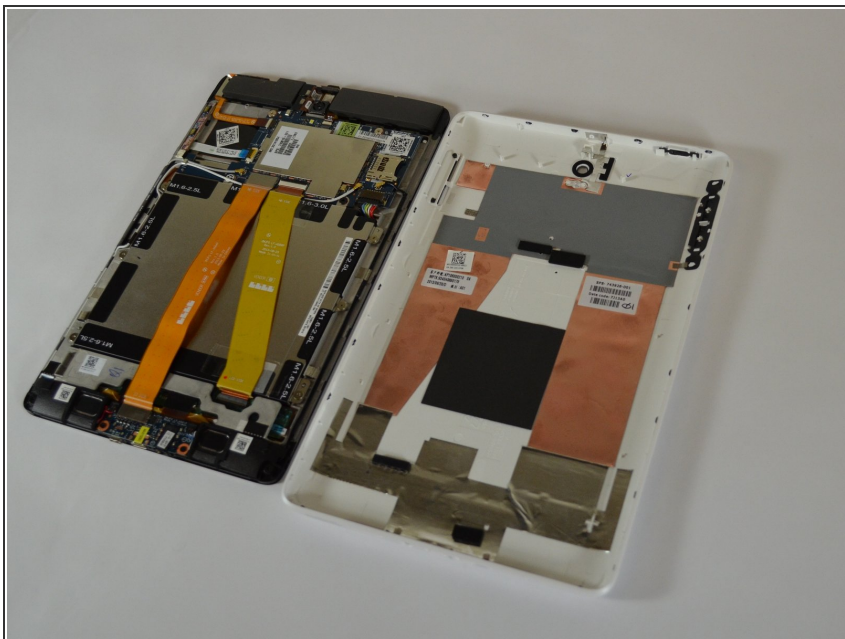
This guide is designed to help you out with changing the IO board. The IO board is used for charging the device, connecting the headphones, and being able to connect to the HDMI cable. If none of these are working you should consider replacing the board itself.



TOOLS:

- [Phillips #00 Screwdriver](#) (1)
-

Step 1 — Remove back cover



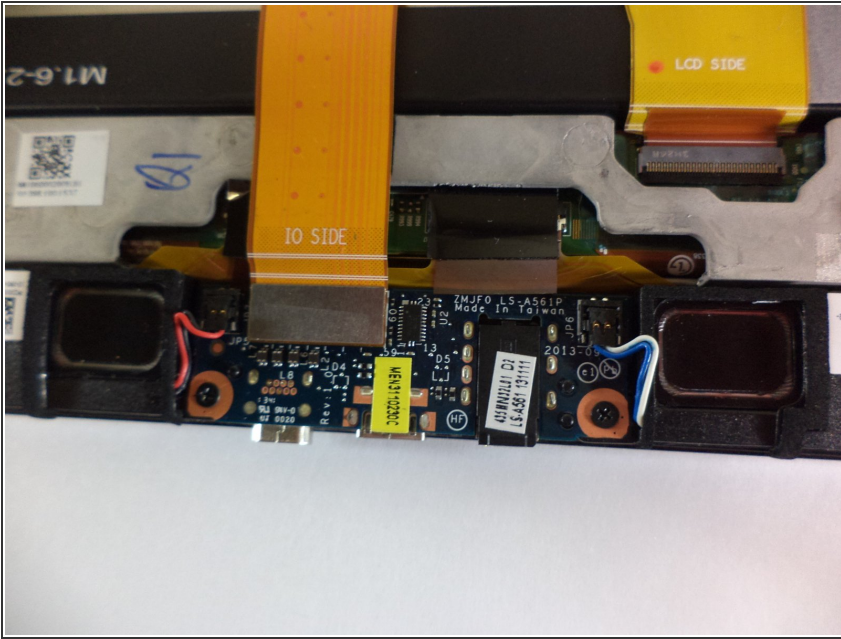
- Turn off the tablet. If you are unsure whether the tablet is off or in Hibernation, turn the tablet on, and then shut it down
- Remove the back cover.

Step 2 — Disconnect battery cable



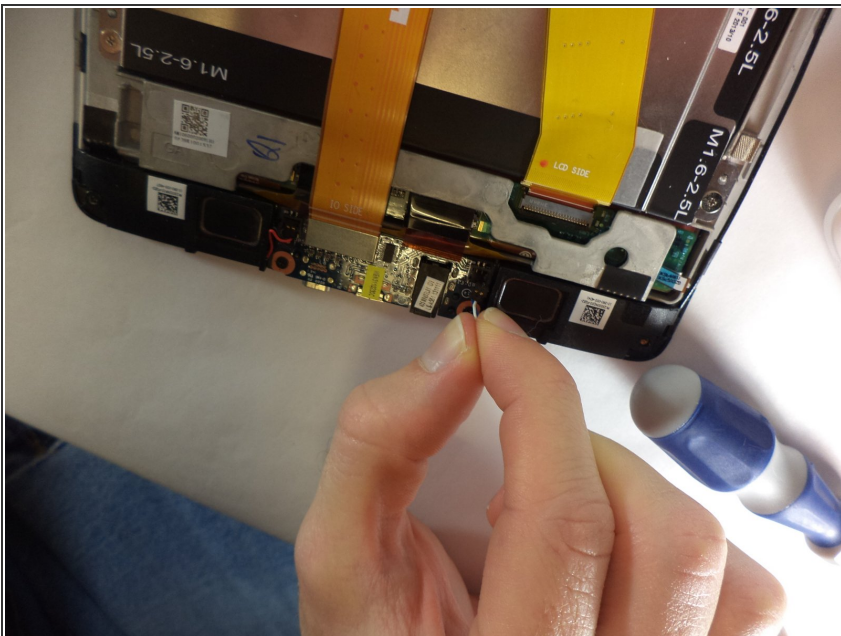
- Disconnect the battery cable from the system board

Step 3 — Remove ribbon cables



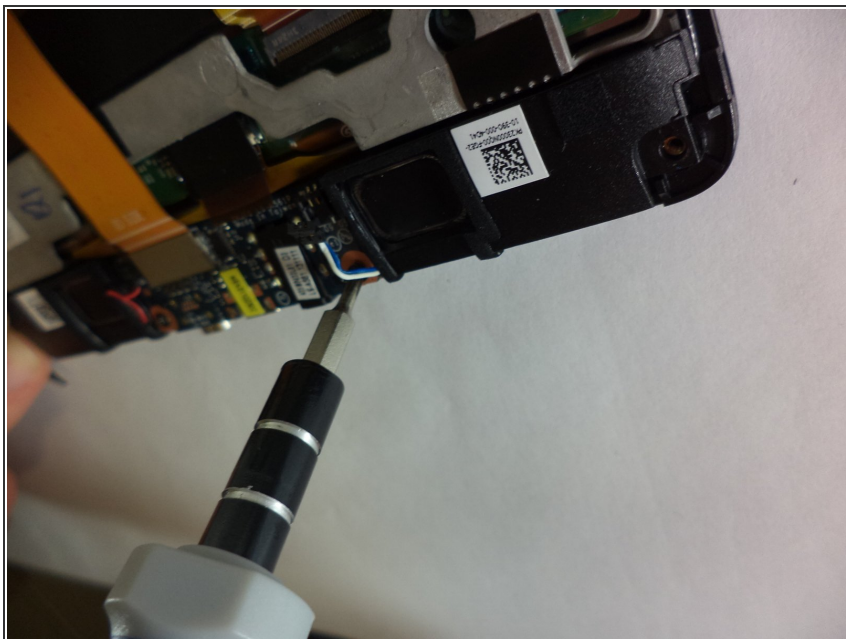
- Pull the yellow ribbons

Step 4 — Disconnect speaker cables



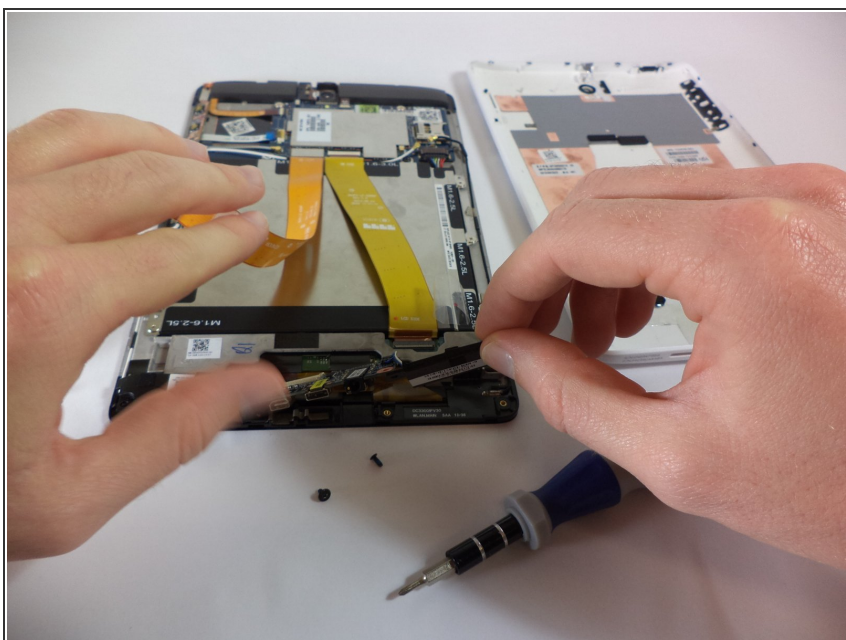
- Disconnect the speaker cables from the I/O board

Step 5 — Remove screws



- Remove the two Phillips PM1.5×4.0 screws that secure the I/O board to the display panel assembly.

Step 6 — Remove the IO board



- Remove the IO board carefully.

To reassemble your device, follow these instructions in reverse order.