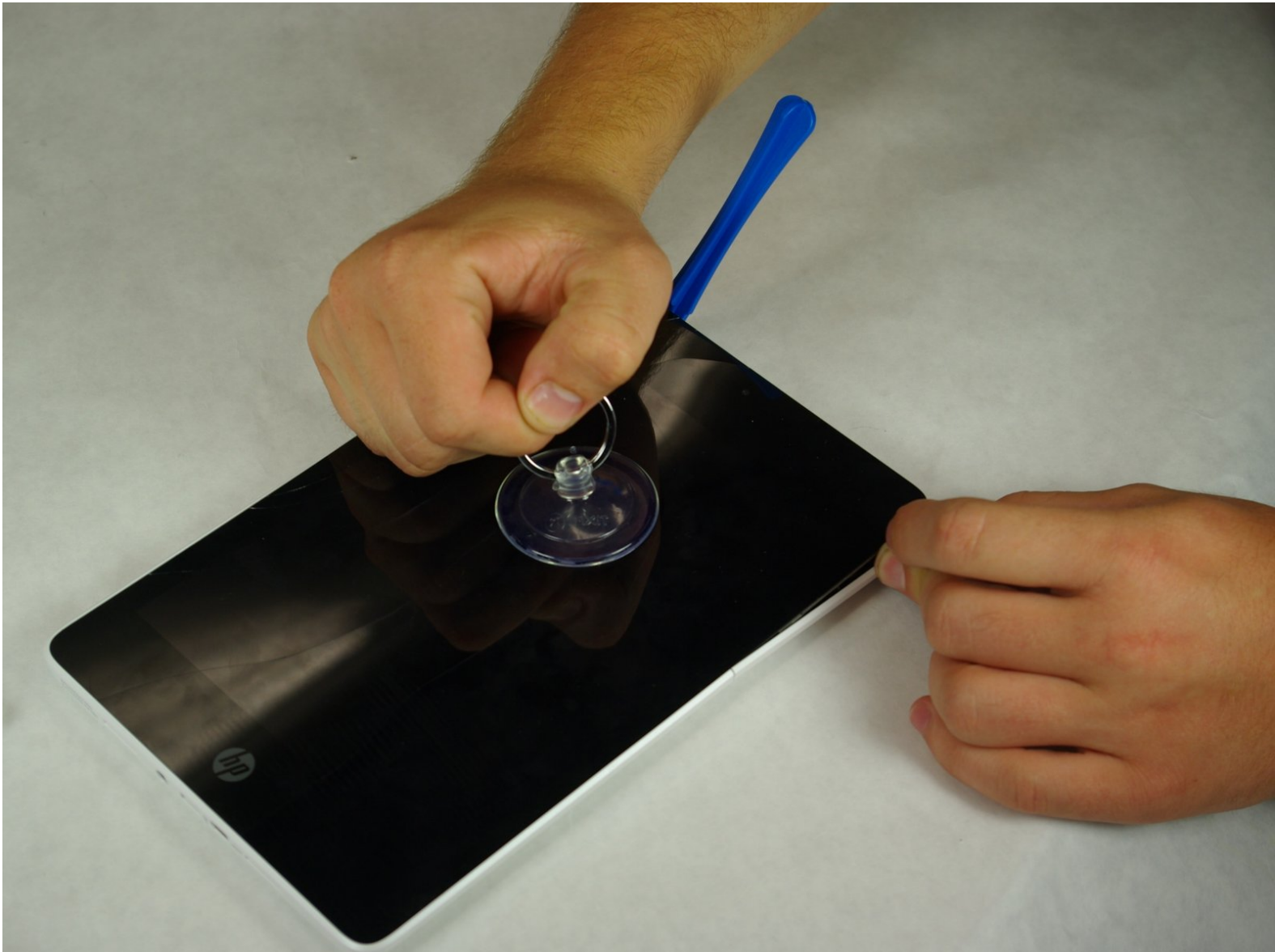




HP Slate 8 Pro Rear Facing Camera Replacement

A guide to show the procedure for the replacement of the rear facing camera.

Written By: Andrew Hall



INTRODUCTION

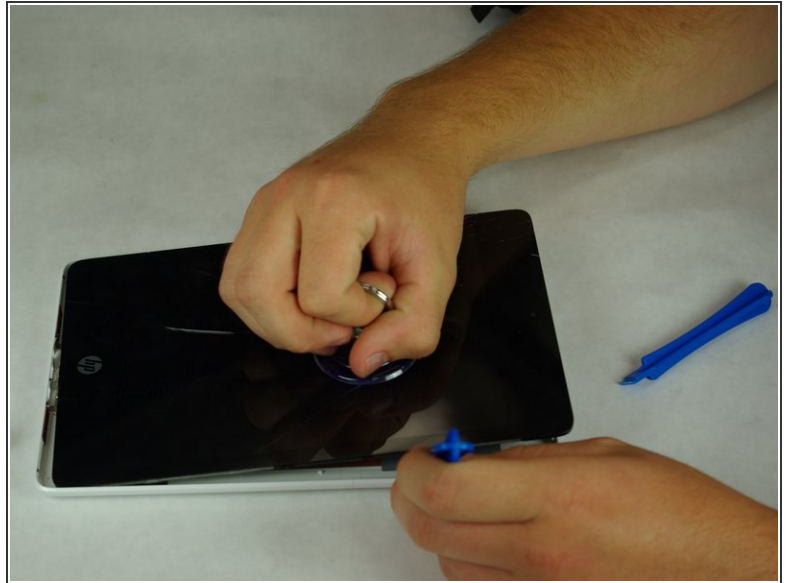
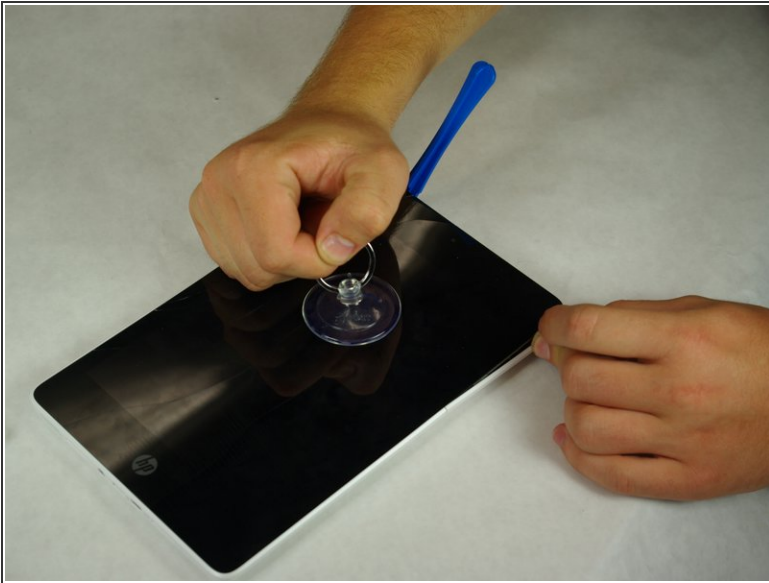
This guide will show you how to pry open the screen and replace the Rear Facing Camera.



TOOLS:

- [iFixit Opening Tools](#) (1)
 - [Spudger](#) (1)
 - [Tweezers](#) (1)
-

Step 1 — Rear Facing Camera



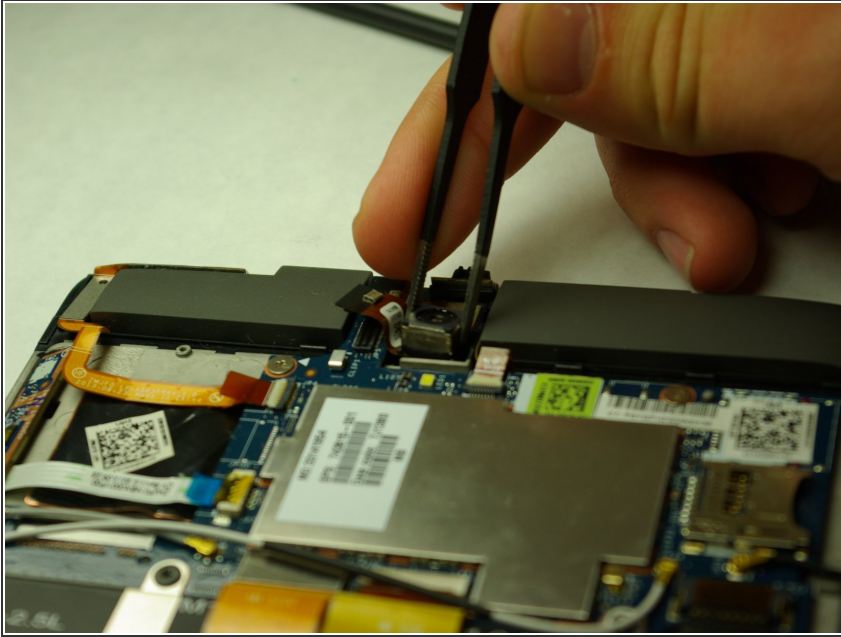
- Secure the suction cup to the center of the screen.
- Using a plastic opening tool, pry along the edges of the display while pulling upwards with the suction cup.

Step 2



- Use the Spudger to disconnect the ribbon cable to the rear facing camera.

Step 3



- Use the tweezers to pry the camera assembly away from the motherboard.

To reassemble your device, follow these instructions in reverse order.