



# HP Spectre 13 4003dx x360 Display Assembly Replacement

This guide will show you how to effectively and safely remove and replace your old and non-functional display assembly with a new one.

Written By: Ethan Plumer



This document was generated on 2019-09-17 10:30:39 AM (MST).

## INTRODUCTION

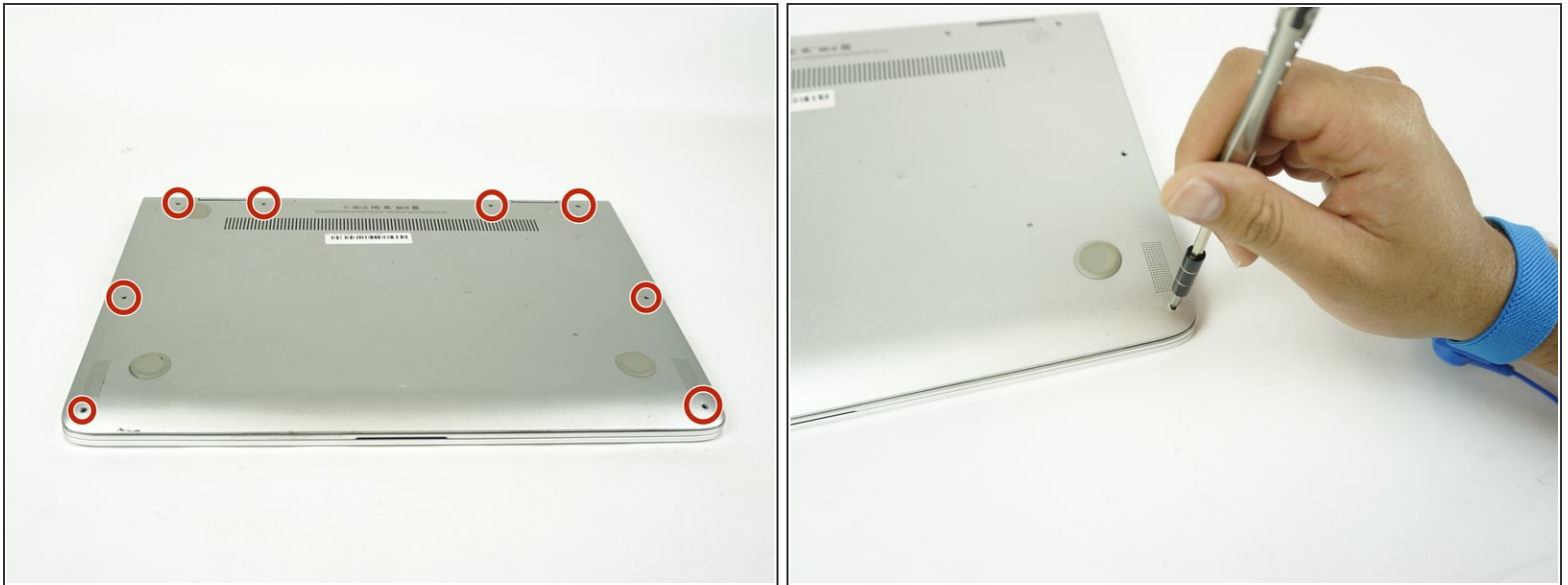
This guide will give you step-by-step instructions on how to replace your display assembly. Make sure you have a clean, dry, uncluttered, and roomy work space that has good lighting before you start. Also, make sure that your display assembly actually needs to be replaced by consulting our [troubleshooting guide](#).




### TOOLS:

- [Anti-Static Wrist Strap](#) (1)
  - [Phillips #00 Screwdriver](#) (1)
  - [Magnetic Project Mat](#) (1)
  - [Tweezers](#) (1)
  - [T4 Torx Screwdriver](#) (1)
-

## Step 1 — Battery



 Static buildup and discharge can damage your computer's components. Use the Ant-Static Wrist strap to help prevent this.

- Turn the computer upside down.
- Use the T4 Torx Screwdriver to remove the eight 3.3 mm screws.

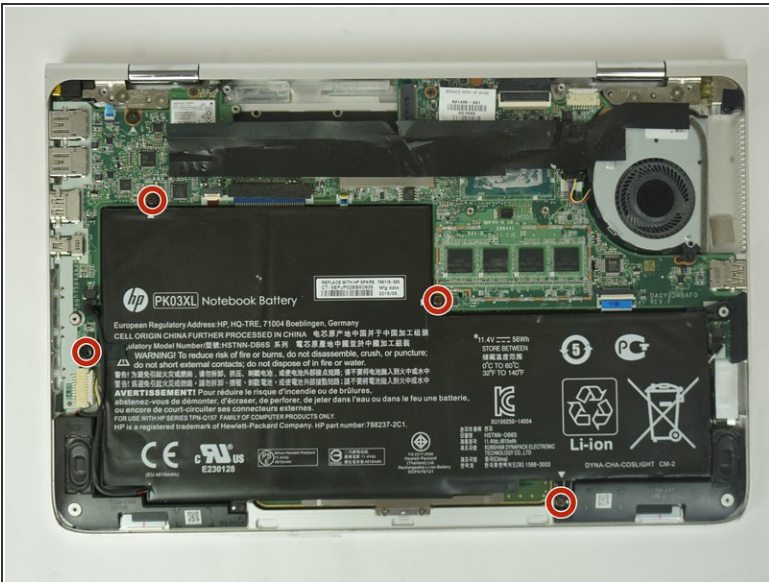
 Make sure to use the Magnetic Project Mat to help you keep track of the small screws.

## Step 2



- Remove the back case by using a plastic opening tool.

## Step 3



- Remove the four 2mm Phillips #00 screws from the battery.
- ⓘ The screw locations are marked by small white arrows on the battery.



## Step 4



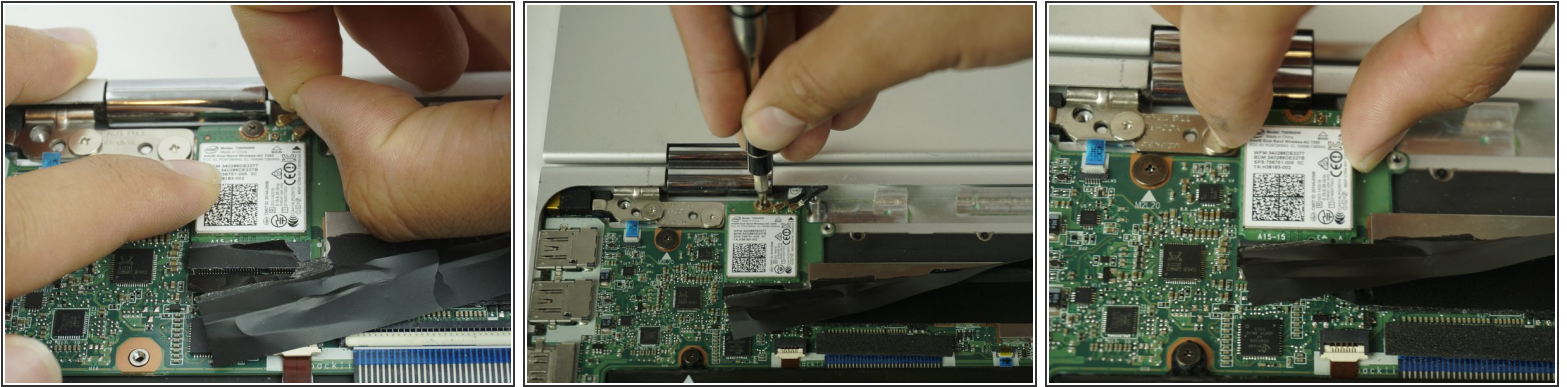
- Peel off the adhesive holding the right speaker wire down.
  - Move the battery slightly to gain access to the battery plug.
  - Unplug then remove the battery.
- i** It is normal for your battery to flex and bend a bit where the wider section meets the narrower section.
- ⚠ Do not puncture the battery.** The contents are hazardous and react dangerously with the oxygen in the air.

## Step 5 — Display Assembly



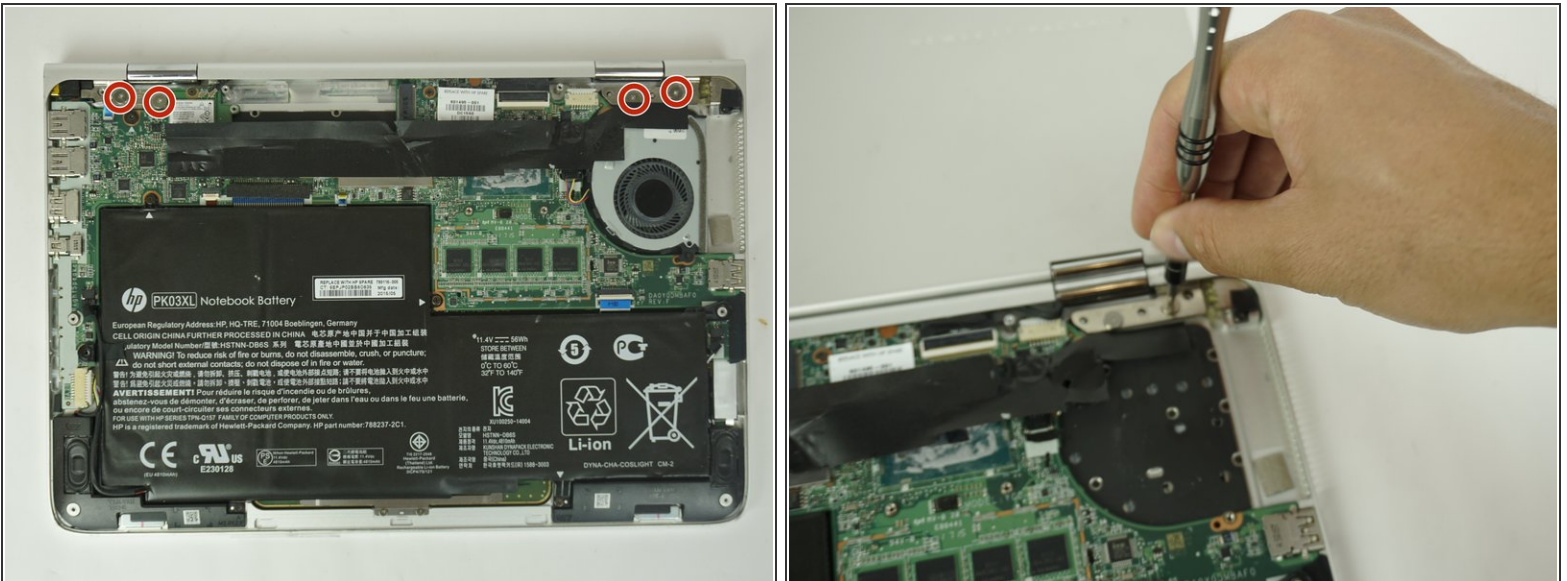
- Remove the two 2mm Phillips #00 screws from the fan.
- Disconnect the fan from the motherboard.

## Step 6



- Using minimal force, disconnect both WiFi antennae cables.
  - Remove the single Phillips #00 screw that secures the WiFi card.
  - Slide the WiFi card up until it is completely removed.
- ⚠ Do not pull up on the wireless module while it is still seated. You may inadvertently damage it.

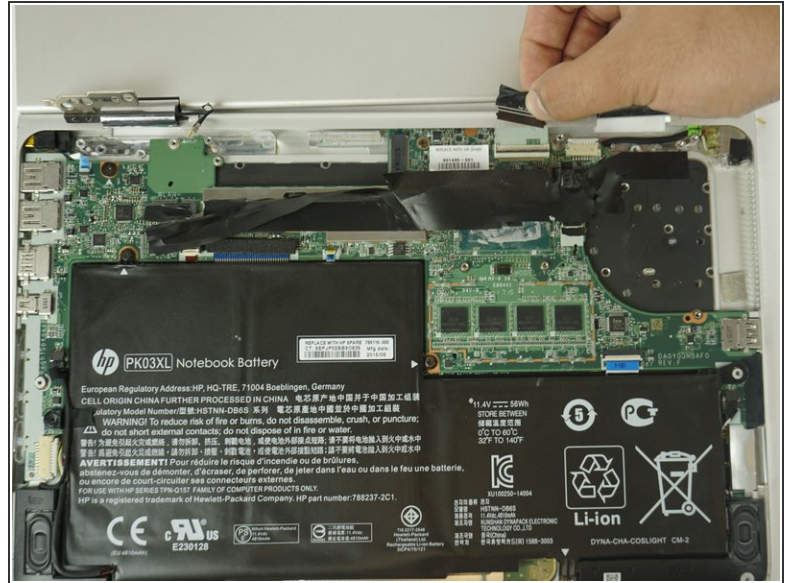
## Step 7



- Remove the four hinge screw with a Phillips #00 screwdriver.

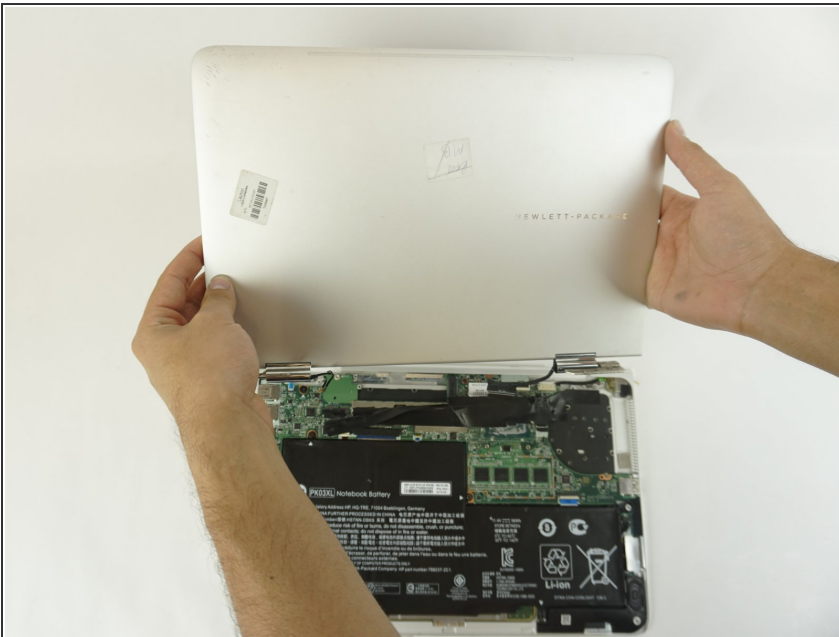


## Step 8



- Grip the black tape and pull up to unplug.

## Step 9



- Separate the display assembly from the body of the computer.
- ⓘ As a result of the orientation of the hinges, you may need to rotate open the laptop to around 270 degrees to clear them.

To reassemble your device, follow these instructions in reverse order.