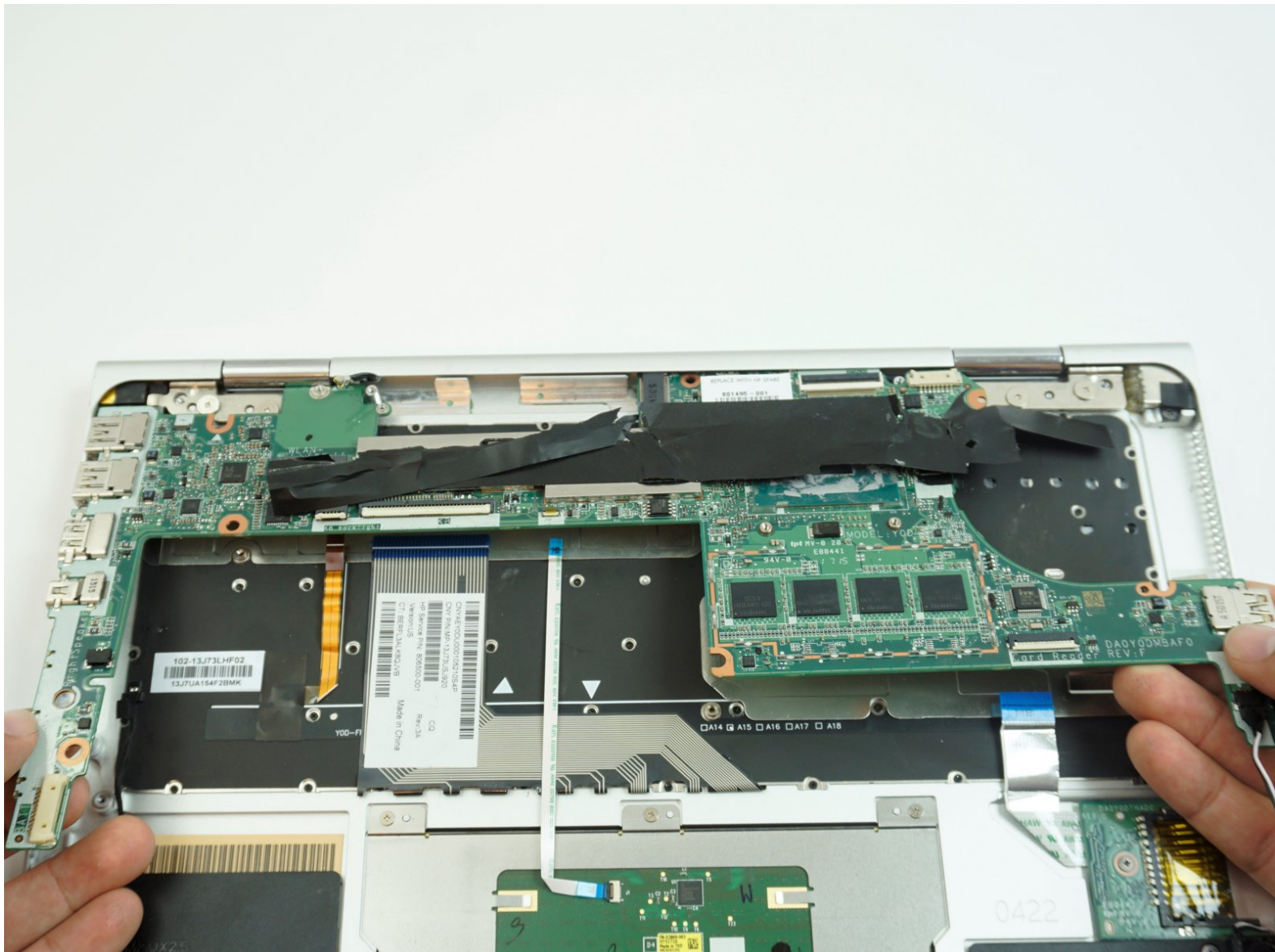




# HP Spectre 13 4003dx x360 Motherboard Replacement

This guide will illustrate steps to take in order to replace a faulty motherboard.

Written By: Alie Antar



## INTRODUCTION

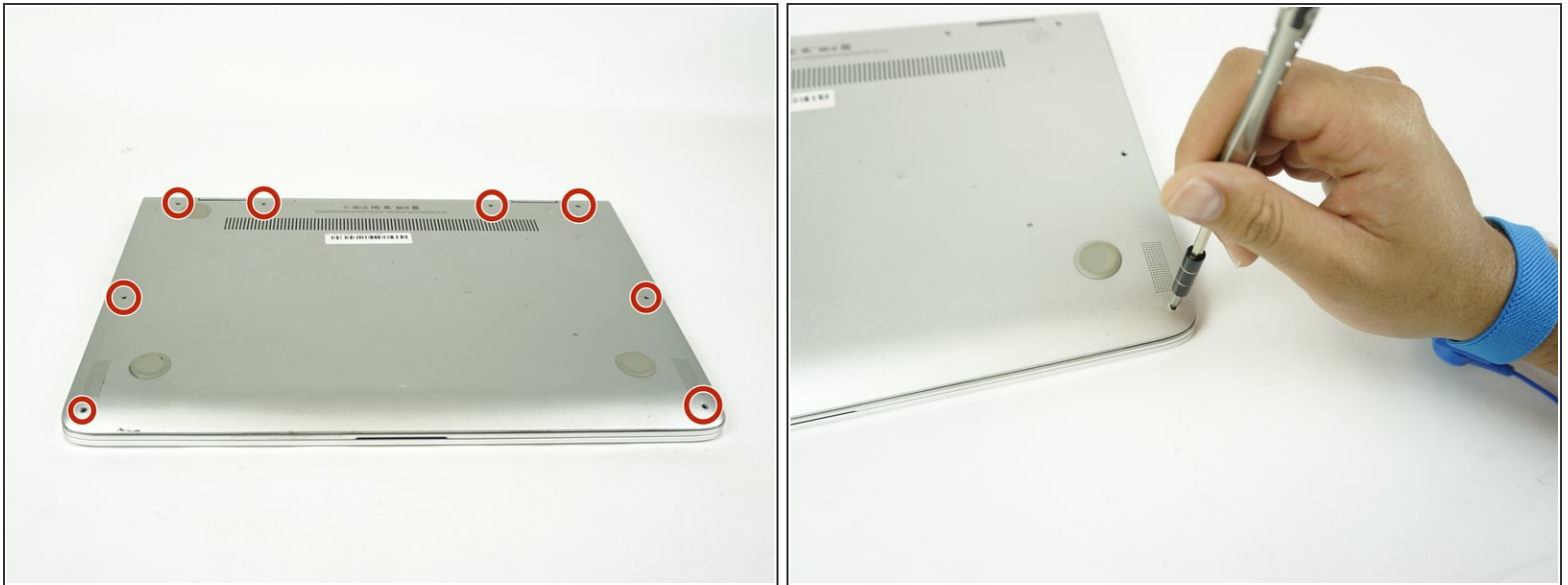
This guide will give you step-by-step instructions on how to remove and replace a faulty motherboard. Make sure you have a clean, dry, uncluttered, and roomy work space that has good lighting before you start. Also, make sure that your motherboard actually needs to be replaced by consulting our troubleshooting guide [troubleshooting guide](#).

---

### TOOLS:

- [Anti-Static Wrist Strap](#) (1)
  - [Phillips #00 Screwdriver](#) (1)
  - [Magnetic Project Mat](#) (1)
  - [T4 Torx Screwdriver](#) (1)
  - [iFixit Opening Tools](#) (1)
-

## Step 1 — Battery



⚠ Static buildup and discharge can damage your computer's components. Use the Ant-Static Wrist strap to help prevent this.

- Turn the computer upside down.
- Use the T4 Torx Screwdriver to remove the eight 3.3 mm screws.

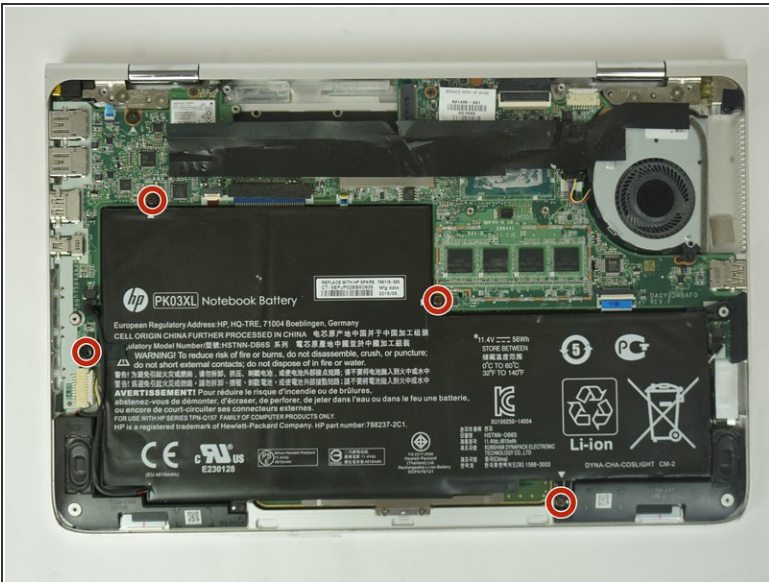
⚠ Make sure to use the Magnetic Project Mat to help you keep track of the small screws.

## Step 2



- Remove the back case by using a plastic opening tool.

## Step 3



- Remove the four 2mm Phillips #00 screws from the battery.
- ⓘ The screw locations are marked by small white arrows on the battery.



## Step 4



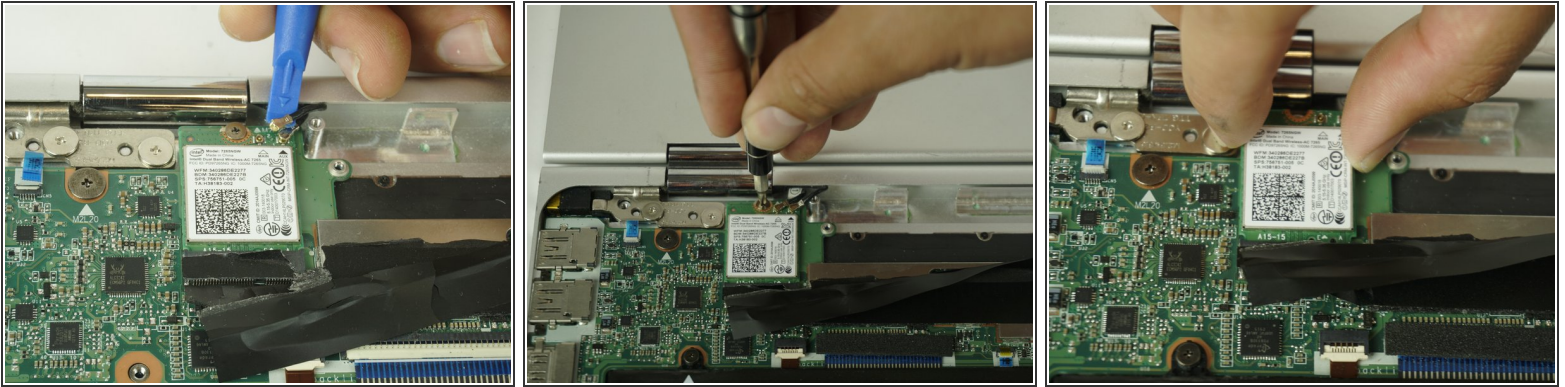
- Peel off the adhesive holding the right speaker wire down.
  - Move the battery slightly to gain access to the battery plug.
  - Unplug then remove the battery.
- i** It is normal for your battery to flex and bend a bit where the wider section meets the narrower section.
- ⚠ Do not puncture the battery.** The contents are hazardous and react dangerously with the oxygen in the air.

## Step 5 — Motherboard



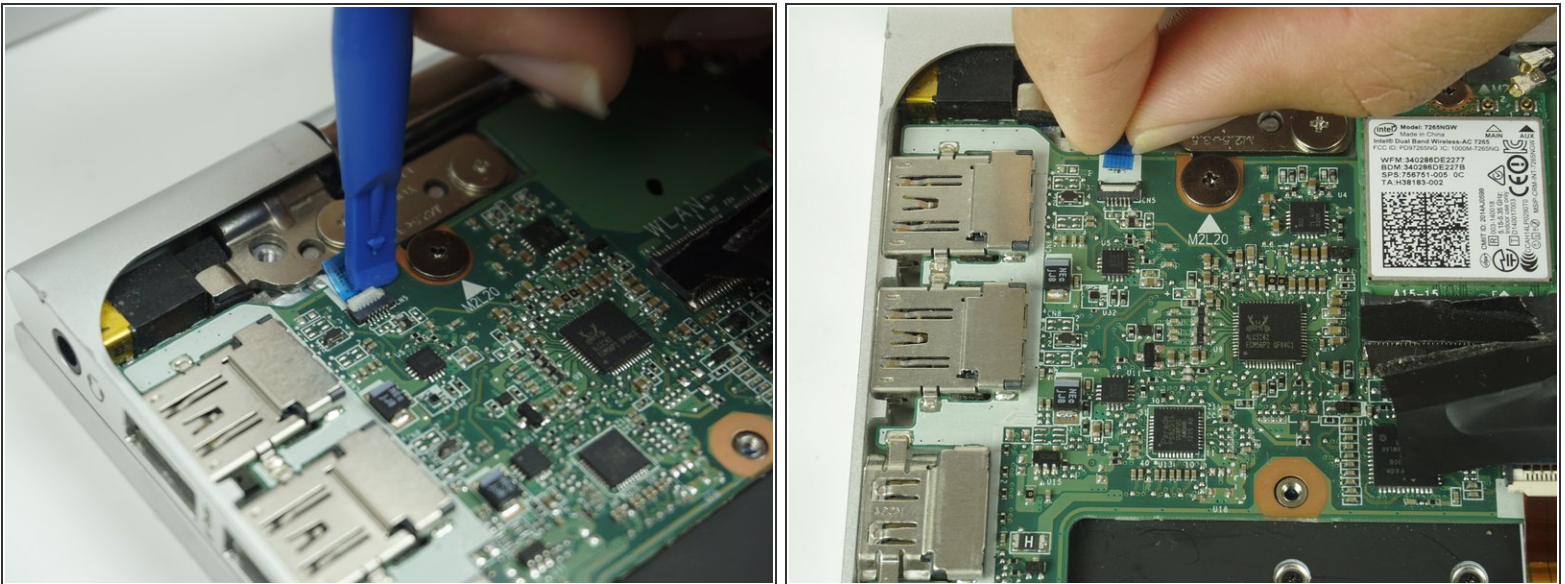
- Remove the two 2mm Phillips #00 screws from the fan.
- Disconnect the fan from the motherboard.

## Step 6



- Using a plastic opening tool, disconnect the antenna wires from the WiFi card.
- Remove the single Phillips #00 screw from the WiFi card.
- Slide the module up until it is completely removed.

## Step 7



- Use a plastic opening tool to flip up the retaining flap on the ribbon cable [ZIF](#) socket.
- Pull the ribbon cable out of the ZIF connector.



## Step 8



- Using two plastic opening tools, Disconnect the right speaker cable from the motherboard.

## Step 9



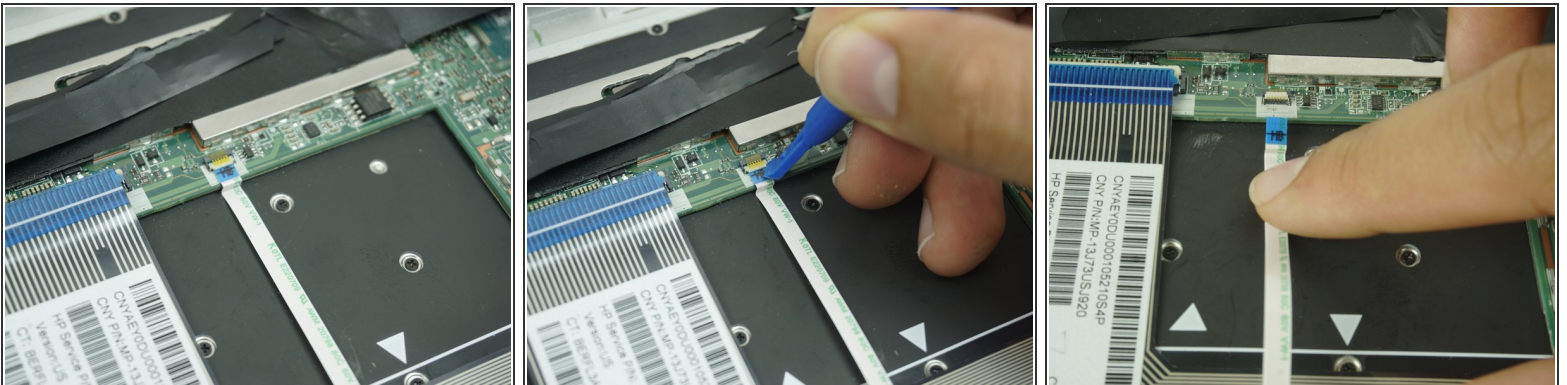
- Identify the ZIF connector that connects the keyboard to the back light as shown in the image.
- Using a plastic opening tool, lift the locking bar on the ZIF connector that connects the keyboard back light to the motherboard.
- Gently pull the cable out.

## Step 10



- Gently peel back the tape on the locking bar of the keyboard connector.
- Using a plastic opening tool, pull up on the locking bar.
- Gently pull the cable out.

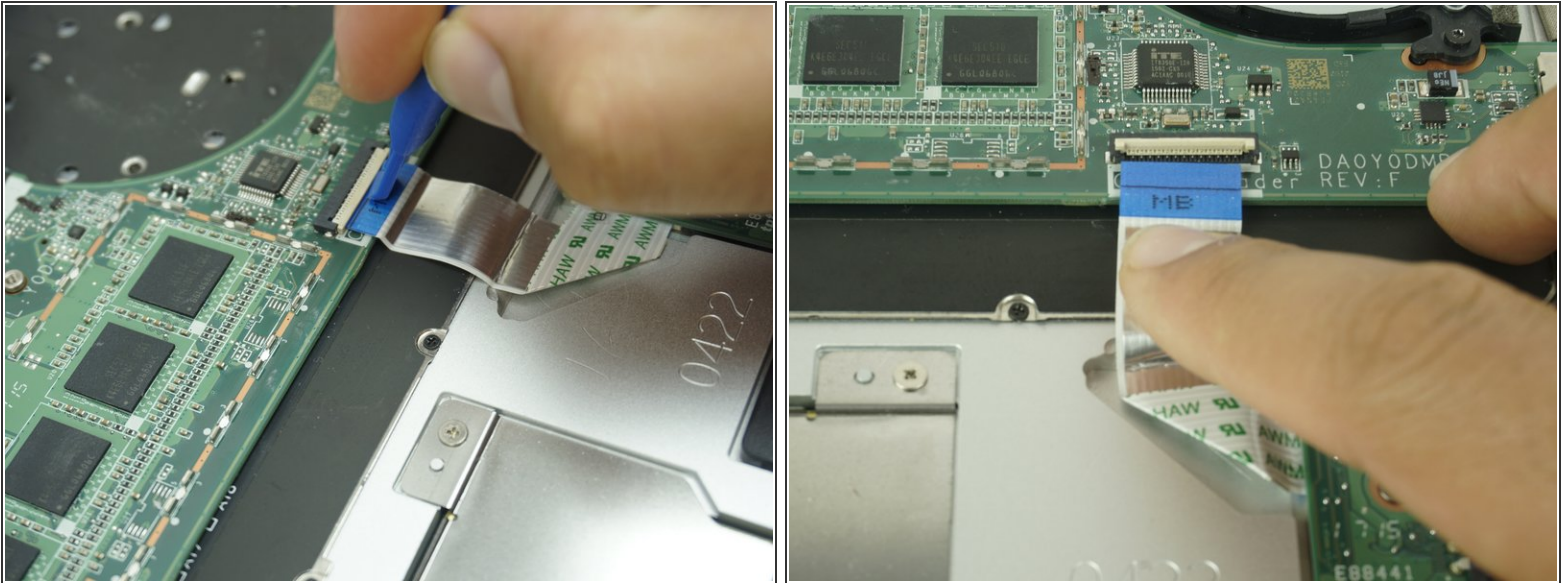
## Step 11



- Identify the touch pad ZIF cable as shown in the image.
- Using a plastic opening tool, Gently lift up the locking bar on the touch pad ZIF.
- Gently slide the cable out.

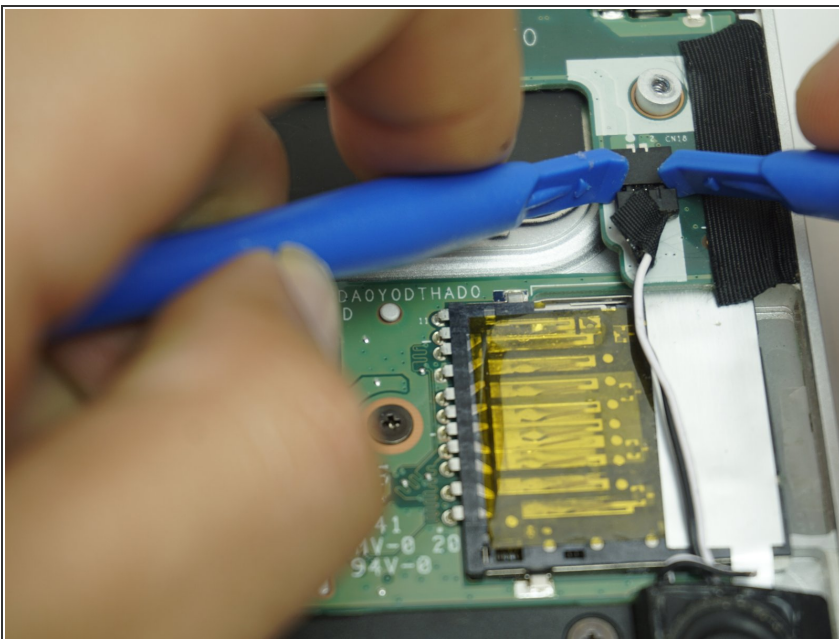


## Step 12



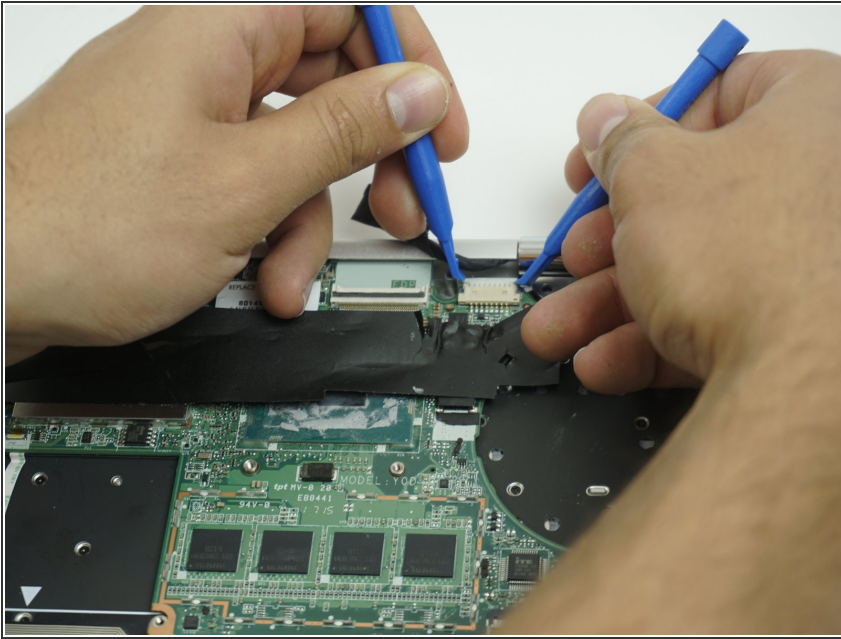
- Using a plastic opening tool, Lift the locking bar on the card reader ZIF connector.
- Gently slide the cable out.

## Step 13



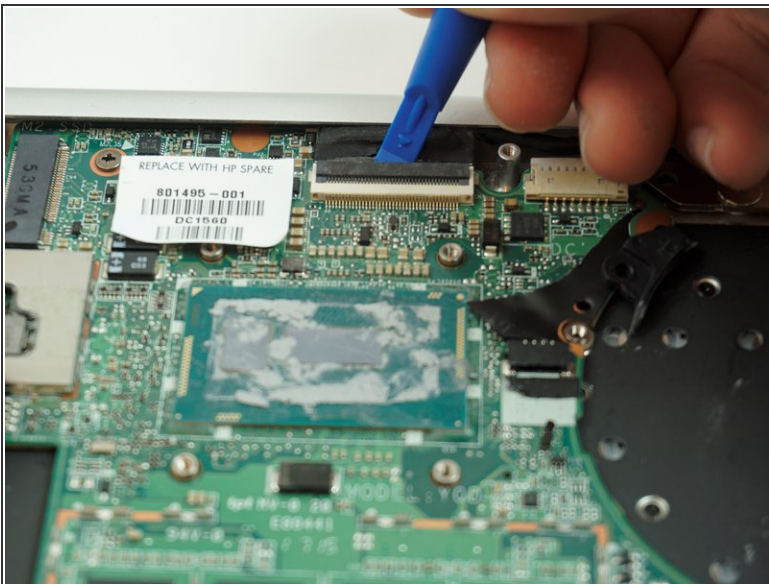
- Using two plastic opening tools, Disconnect the left speaker cable.

## Step 14



- Using two plastic opening tools, Unplug the power cable connector.

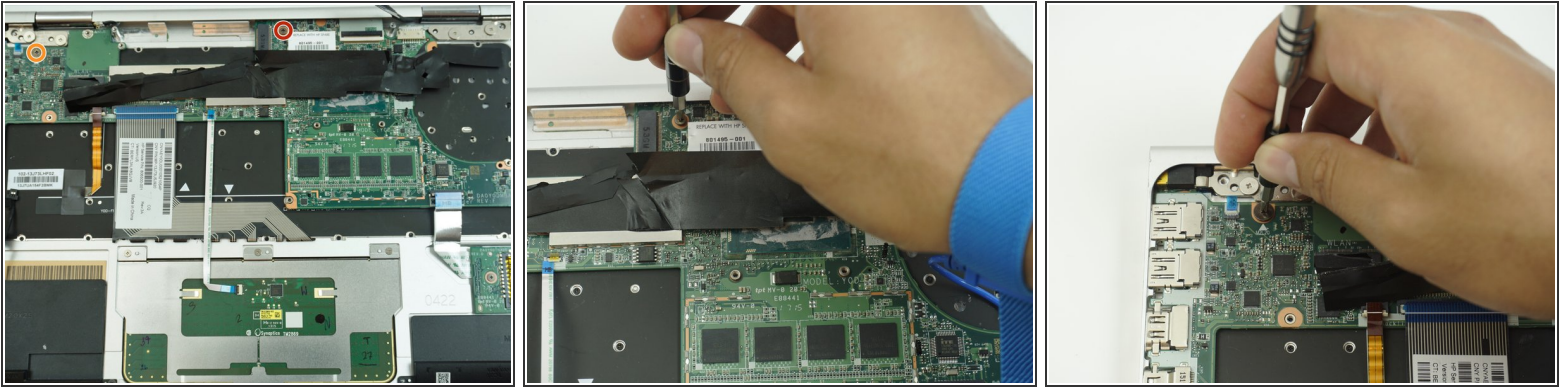
## Step 15



- Using a plastic opening tool, Lift the locking bar on the display connector.
- Grip the black tape and pull up to unplug.

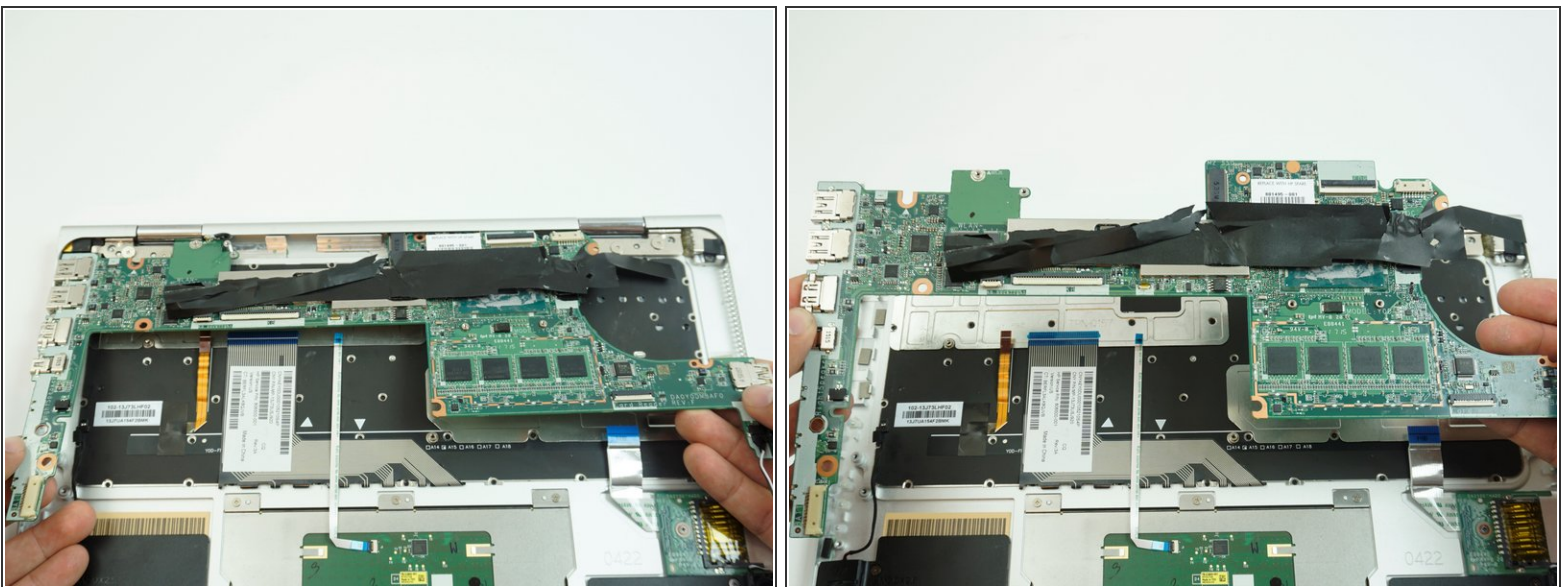


## Step 16



- Remove the 3.5mm Phillips #00 screw securing the motherboard to the top cover.
- Remove the 2mm Phillips #00 screw securing the motherboard to the top cover.

## Step 17



- Remove the motherboard from the alignment pins on the top cover.

To reassemble your device, follow these instructions in reverse order.