



HP Spectre 13-4002dx SD Card Reader Replacement

This guide will walk you through how to replace the SD Card Reader for this HP laptop.

Written By: Cayce Stewart



INTRODUCTION

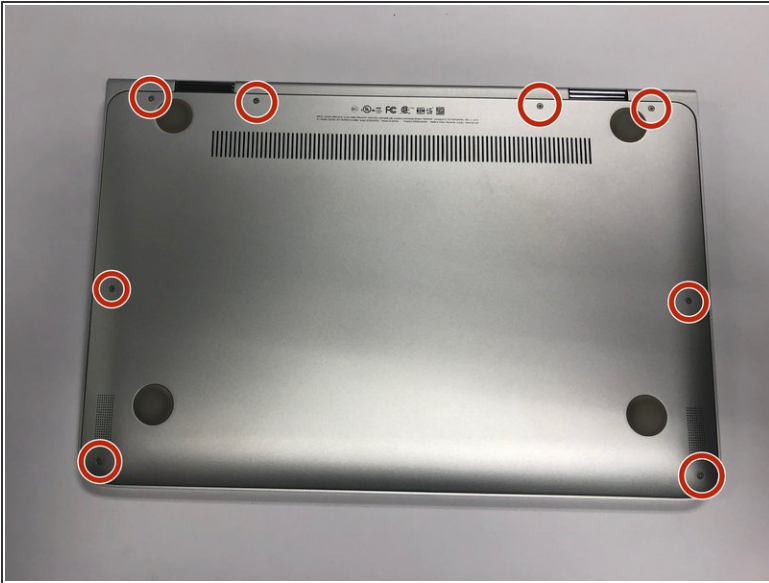
The laptop needs to be turned off during this procedure. The battery will need to be removed for this procedure and you or your laptop can be damaged if the battery is disconnected while the power is on. All SD cards need to be ejected before replacing the SD card reader.



TOOLS:

- [Phillips #000 Screwdriver](#) (1)
 - [T5 Torx Screwdriver](#) (1)
 - [Spudger](#) (1)
 - [Tweezers](#) (1)
 - [Phillips #0 Screwdriver](#) (1)
-

Step 1 — Bottom Case



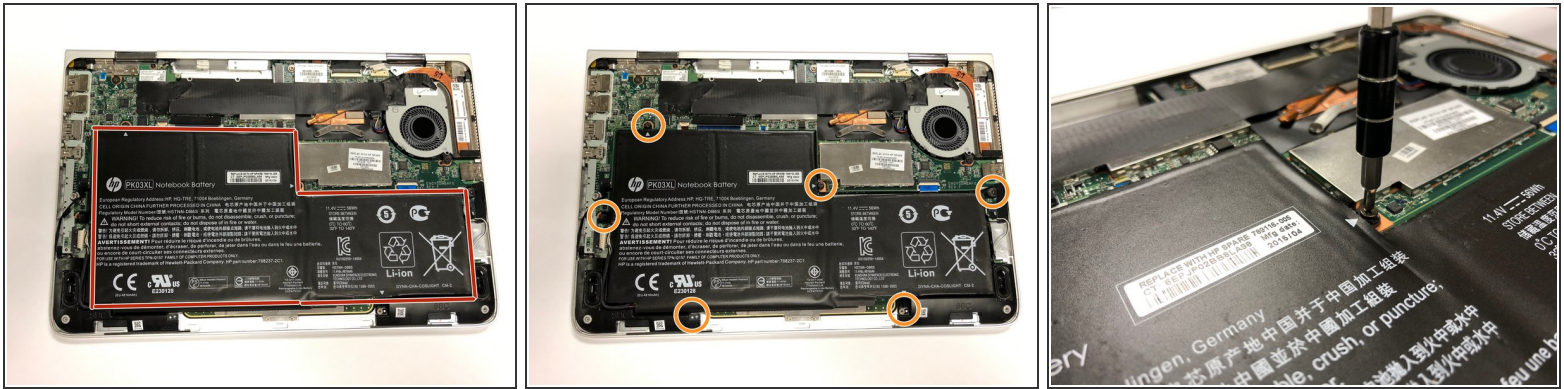
- Using the Torx T5 screwdriver, remove the eight 8 mm screws on the bottom case of the laptop.

Step 2



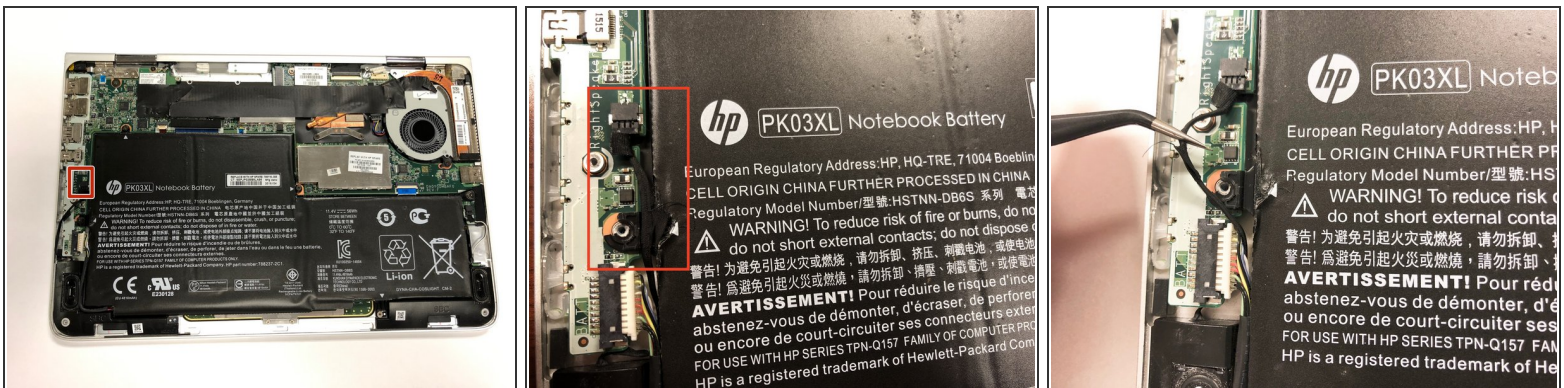
- Pry up one corner of the bottom case with a spudger.
- Work the spudger around the edges, making your way towards the bottom of the laptop.
- Remove the bottom case.

Step 3 — Battery



- Orient the laptop the same way as the pictures. The battery is bordered in a red outline.
- Remove the six 4 mm screws using a Phillips #000 screwdriver.

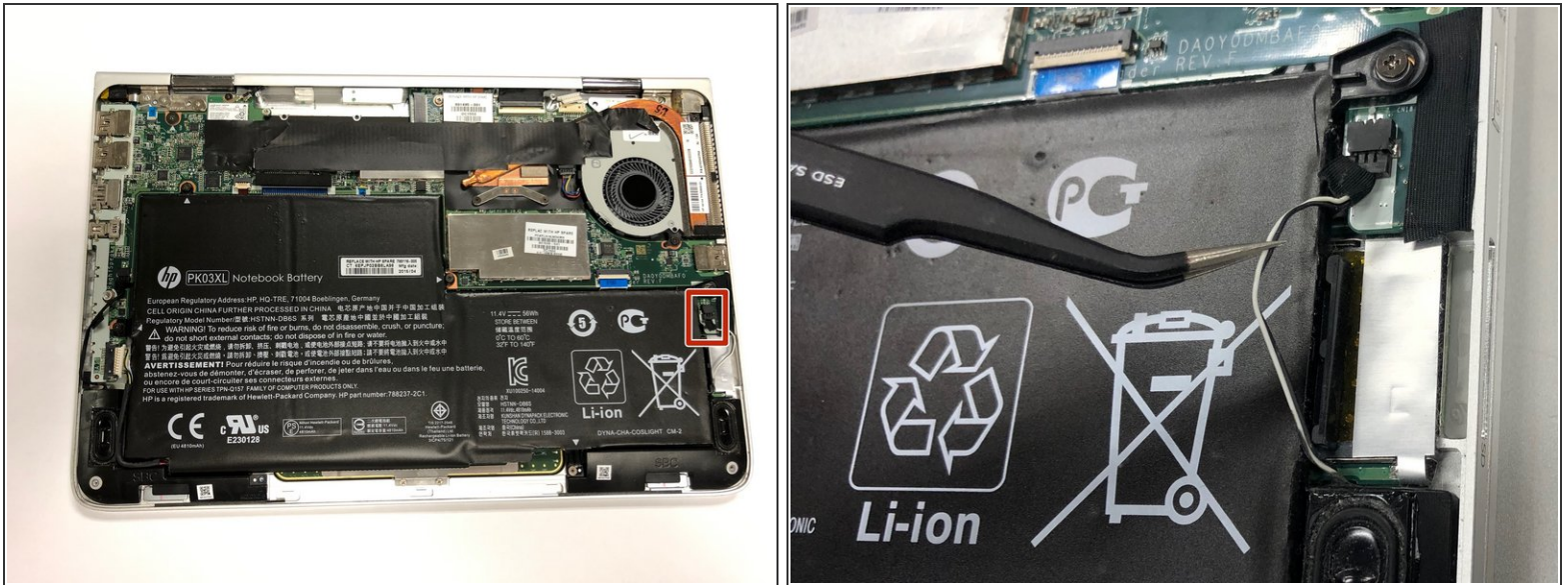
Step 4



⚠ Do not disconnect the cable connector shown in the red box.

- The speaker cable may be attached to the battery with black electrical tape. If so, remove the tape.
- Move the cable clear of the battery.

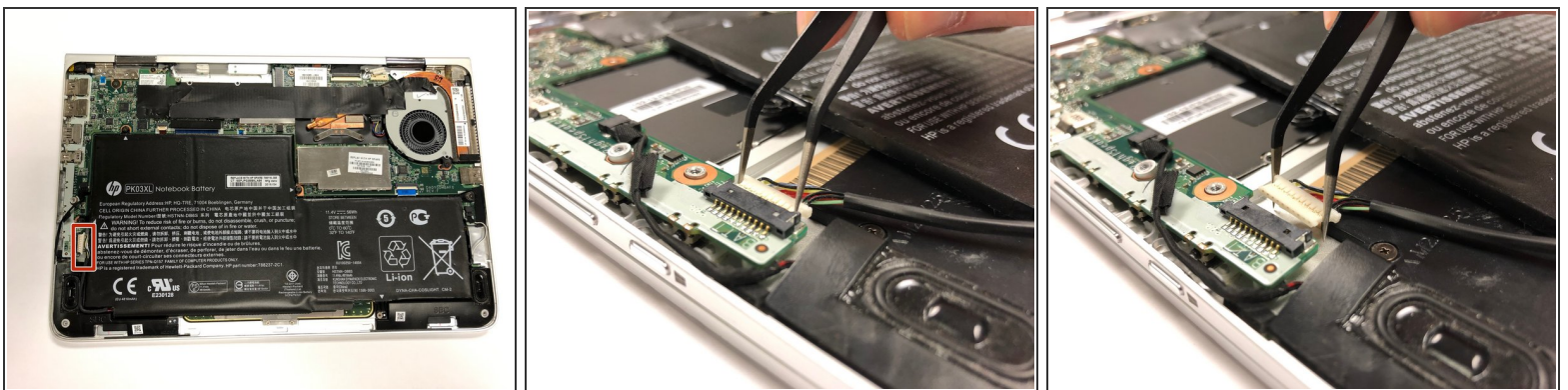
Step 5



⚠ Do not disconnect the cable connector located in the red box.

- Use tweezers to remove the speaker cable from the groove attached to the battery.
- Push the cable to the side so it does not get in the way of the battery removal.

Step 6



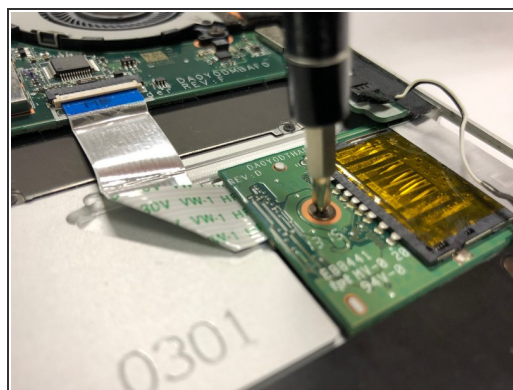
- Disconnect the battery cable connector by sliding it out of the socket.
- ① Move the battery out of the way if you need more room to disconnect the power cable.

Step 7



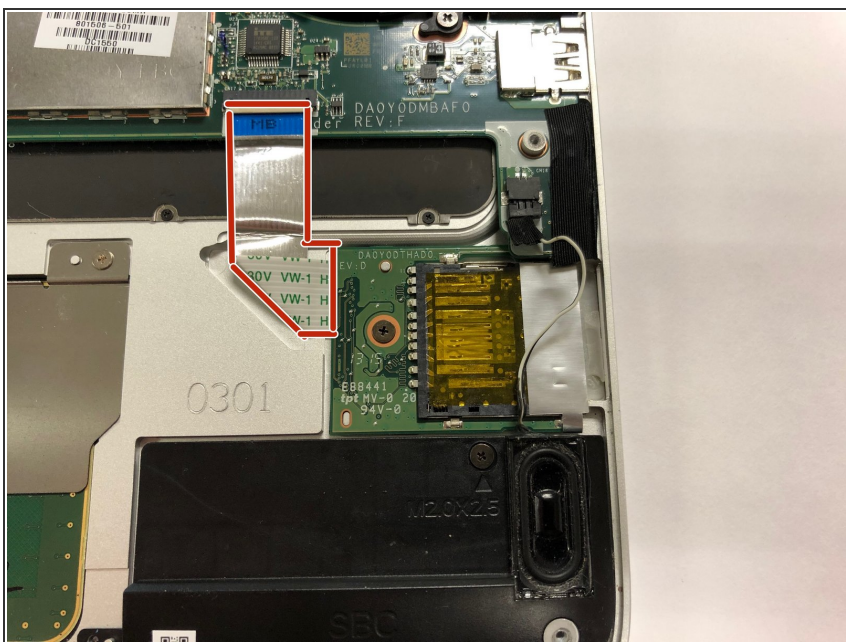
- Carefully remove the battery.

Step 8 — SD Card Reader



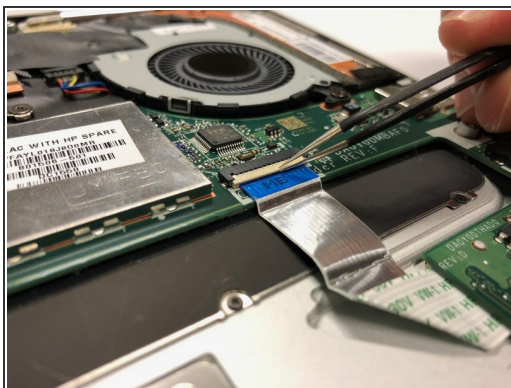
- The SD Card Port is located in the red box.
- Remove the one PH0 30 mm screw circled in red.

Step 9



- Remove the connector outlined in red.

Step 10



- To unlock the ribbon cable, lift the white flap on the ZIF connector 90 degrees.
- Slide the ribbon cable out of the connector.

Step 11



- Remove the SD Card Port.

To reassemble your device, follow these instructions in reverse order.