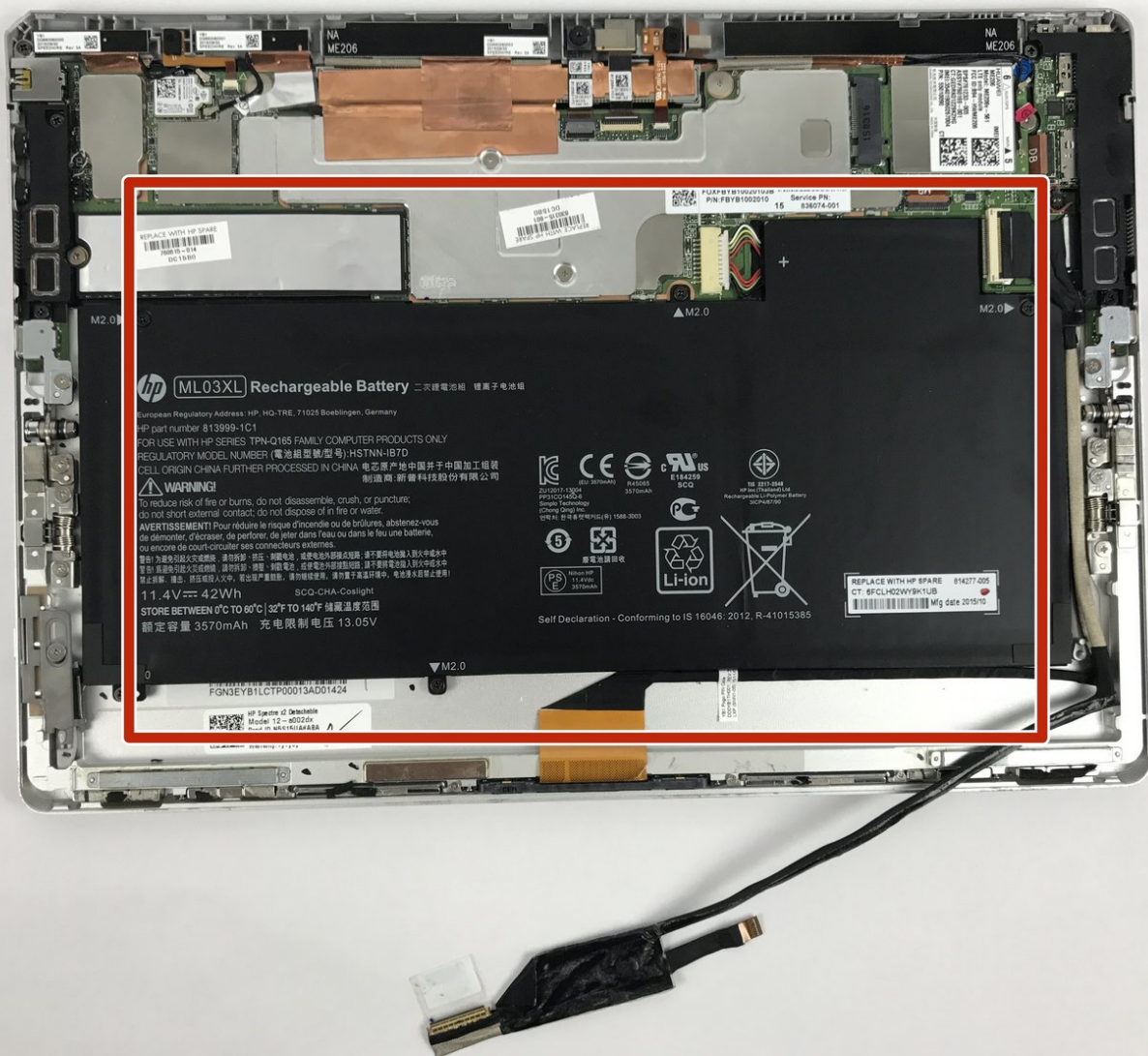




HP Spectre x2 12-a002dx Battery Replacement

Use this guide to replace the battery for your HP Spectre x2.

Written By: Talha Bin Amir



INTRODUCTION

A faulty battery could be the reason for the laptop not turning on. If you are certain that the battery needs to be replaced, follow this guide to replace the battery.

TOOLS:

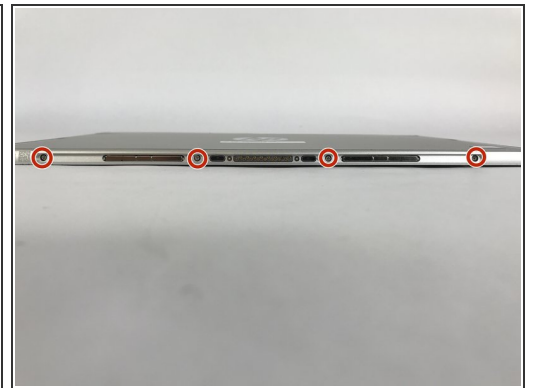
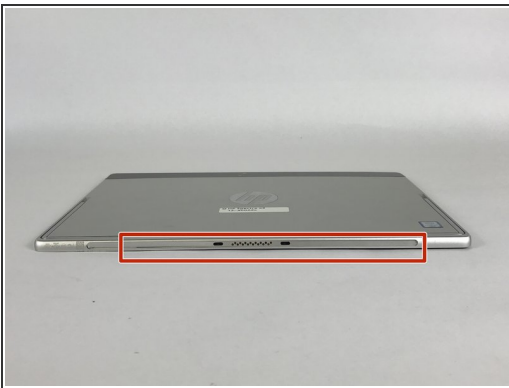
- [Phillips #000 Screwdriver](#) (1)
 - [Spudger](#) (1)
 - [iFixit Opening Tools](#) (1)
 - [Heat Gun](#) (1)
 - [Tweezers](#) (1)
 - [JIS #00 Screwdriver](#) (1)
-

Step 1 — Screen



- Make sure the device is powered off and the kick stand is retracted.
- The HP Spectre should be placed on a flat surface with the keyboard detached.

Step 2



- To remove the screen, there is an entire system of clips which need to be undone as well as 4 Phillips M1.5x2.7 screws.
- The screws should be removed using a Phillips #000 screwdriver. There is a sticker where the laptop attaches to the keyboard.
- Heat the sticker (if needed) and use fine point tweezers to grip the sticker and remove it.

Step 3



- Use the plastic opening tools or insert a spudger to begin unclipping the system.
 - Pry the screen off once all the clips have been unclipped.
- ⚠ The screen may shatter if not already shattered (beware of flying glass).

Step 4



- This screen will broke. there are double tape underneath the frame, that is not listed in here.

Step 5



- Remove the connecting cable of the screen and battery. Use a spudger to reveal the adhesive strip and carefully peel it off.
- Insert a spudger to the other end and release the ZIF connectors. Detach the cable.
- ⓘ While a metal spudger is pictured, use a black nylon spudger instead because it is ESD safe.

Step 6 — Battery



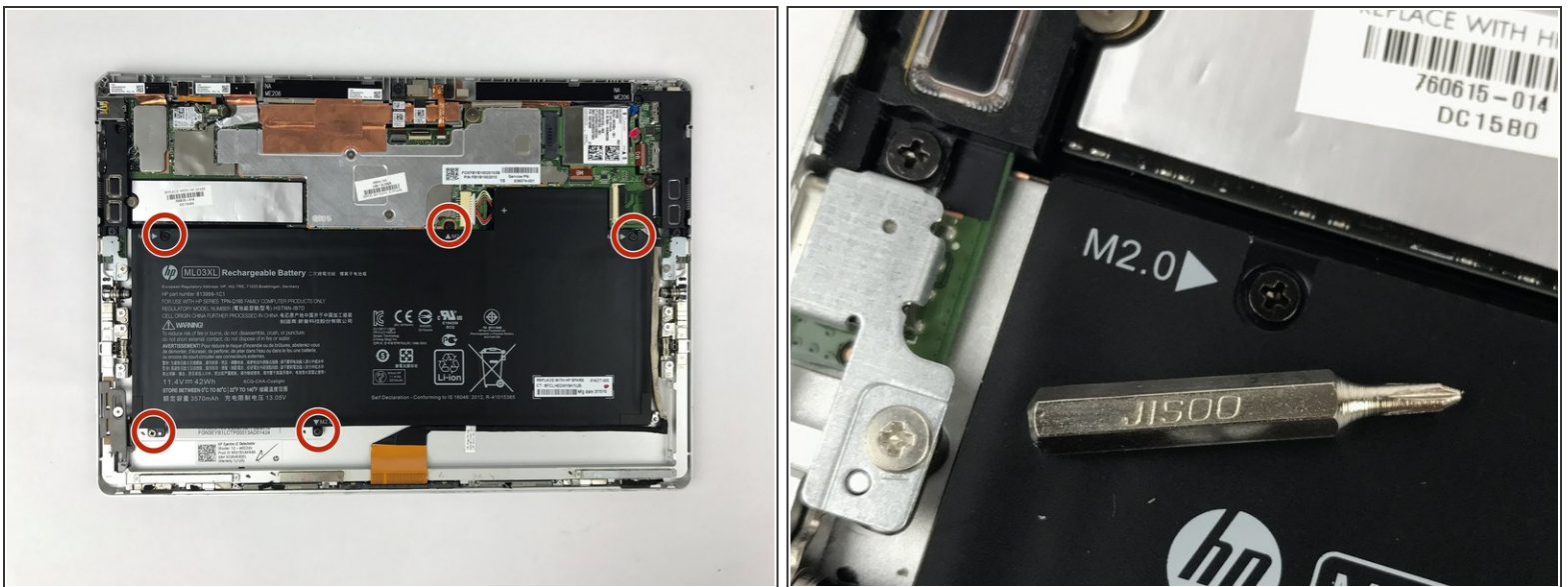
- The battery for this device is under the screen and takes up most of the space.

Step 7



- Pull the wire gently towards the connector.
- Then, disconnect the wire and remove it from the device.

Step 8



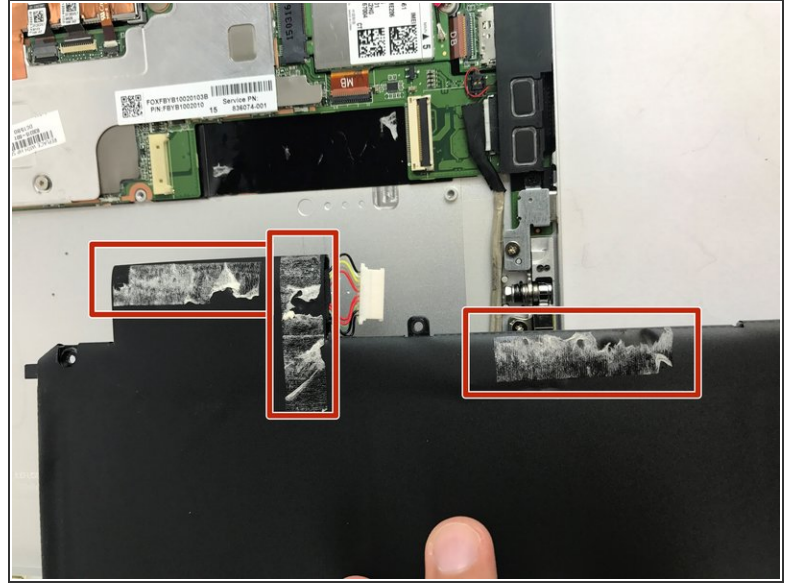
- Remove the six Phillips M2.0×3.5 screws connecting the battery to the device using the JIS 00 screwdriver.
- ☑ Make sure to keep the screws in a safe place. You will need to use them to secure the replacement battery back in place.

Step 9



- Use the tip of a spudger to push the battery connector out of its socket.
- ⓘ It helps to "walk" the connector out by pressing first on one side, then the other.

Step 10



- Lift up the side of the battery that isn't glued down with adhesive
 - Use the spatula to gently scrape away the adhesive while applying a gentle upward pressure to help break the adhesive bonds.
- i** A metal spudger was used again as pictured, but the black nylon spudger would be more appropriate to use.

Step 11



- Finally remove the old battery.

To reassemble your device, follow these instructions in reverse order.