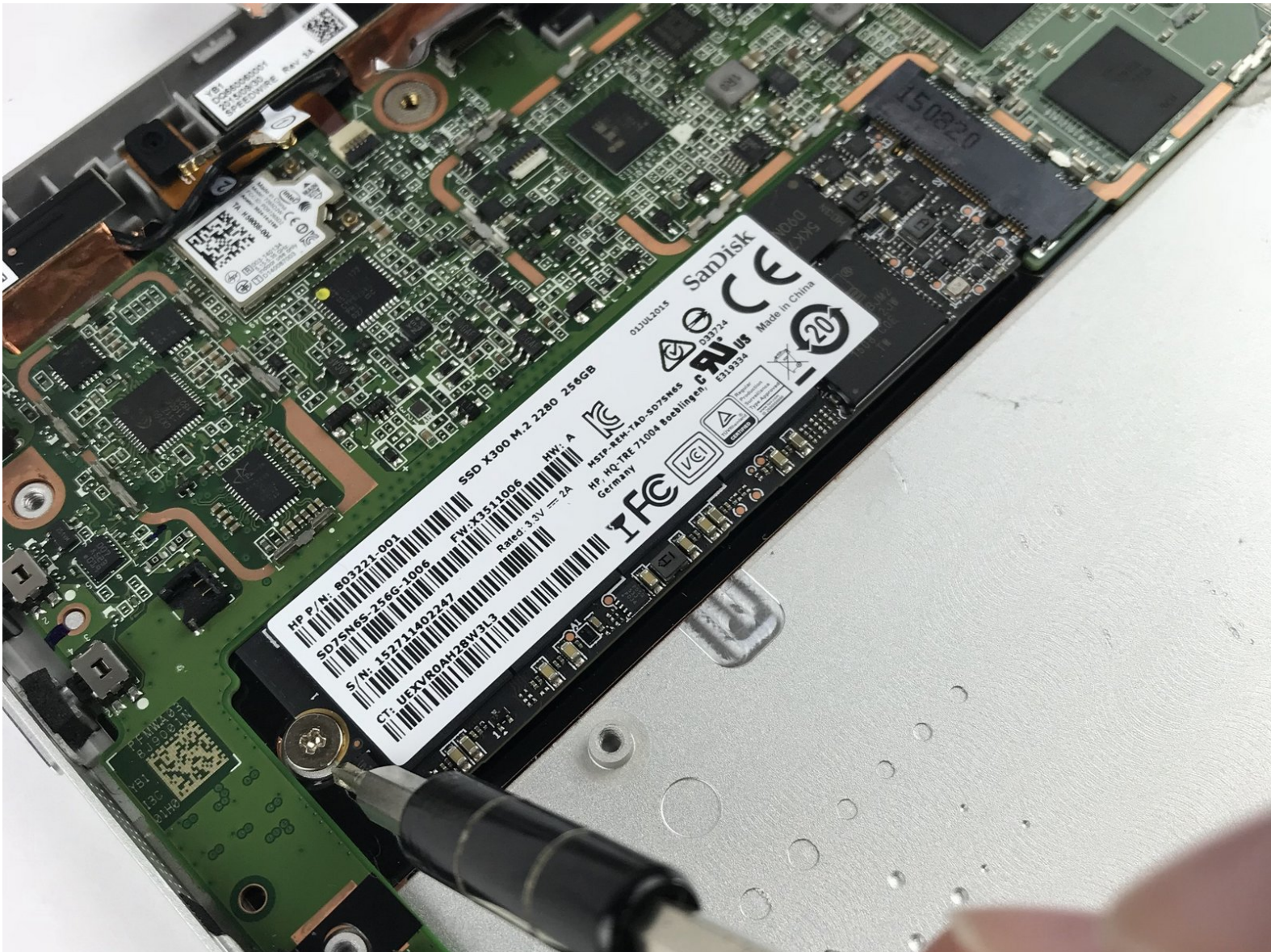




# HP Spectre x2 12-a002dx SSD Replacement

Written By: Talha Bin Amir



# INTRODUCTION

Solid State Drives (SSDs) usually don't have a lot of storage which is why running out of storage space on your device is really common. This guide shows how to replace and upgrade the SSD on this device.

---

## TOOLS:

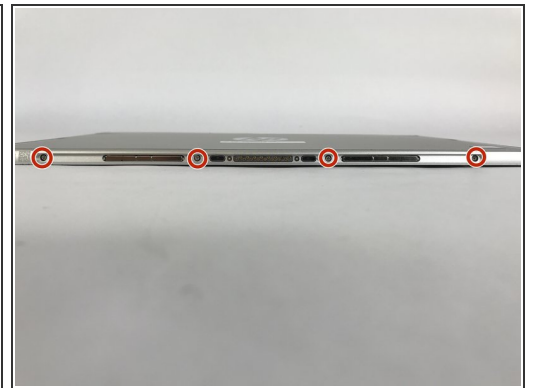
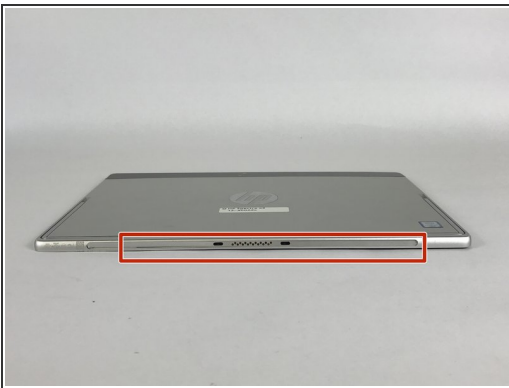
- [Spudger](#) (1)
  - [iFixit Opening Tools](#) (1)
  - [Heat Gun](#) (1)
  - [Tweezers](#) (1)
  - [JIS #00 Screwdriver](#) (1)
  - [Phillips PH000 Screwdriver](#) (1)
-

## Step 1 — Screen



- Make sure the device is powered off and the kick stand is retracted.
- The HP Spectre should be placed on a flat surface with the keyboard detached.

## Step 2



- To remove the screen, there is an entire system of clips which need to be undone as well as 4 Phillips M1.5x2.7 screws.
- The screws should be removed using a Phillips #000 screwdriver. There is a sticker where the laptop attaches to the keyboard.
- Heat the sticker (if needed) and use fine point tweezers to grip the sticker and remove it.



## Step 3



- Use the plastic opening tools or insert a spudger to begin unclipping the system.
  - Pry the screen off once all the clips have been unclipped.
- ⚠ The screen may shatter if not already shattered (beware of flying glass).

## Step 4



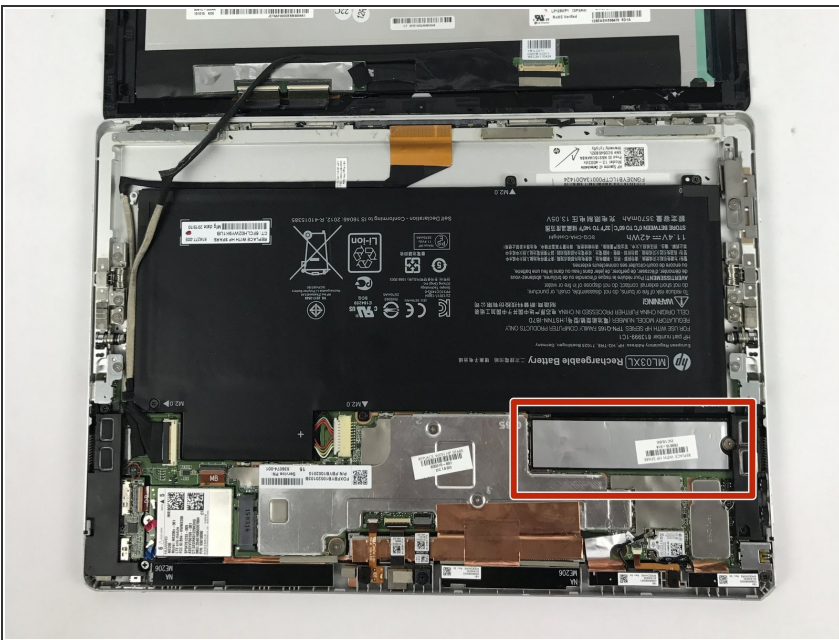
- This screen will broke. there are double tape underneath the frame, that is not listed in here.

## Step 5



- Remove the connecting cable of the screen and battery. Use a spudger to reveal the adhesive strip and carefully peel it off.
- Insert a spudger to the other end and release the ZIF connectors. Detach the cable.
- ⓘ While a metal spudger is pictured, use a black nylon spudger instead because it is ESD safe.

## Step 6 — SSD



- Once you have successfully removed the screen, locate the solid state drive (SSD).

## Step 7



- Unscrew the PM2.0x2.5 screw on the SSD using a JIS00 screwdriver.
- Store the screw in a safe place. You will need it to secure the replacement SSD in place.

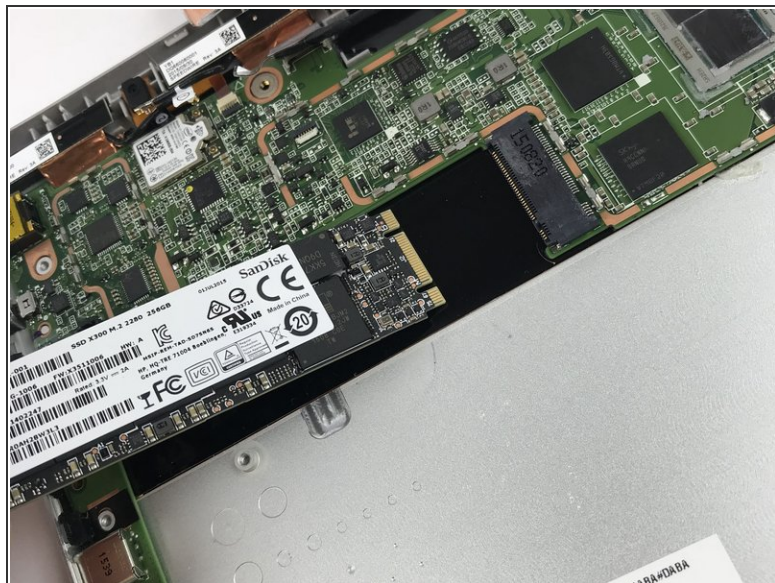
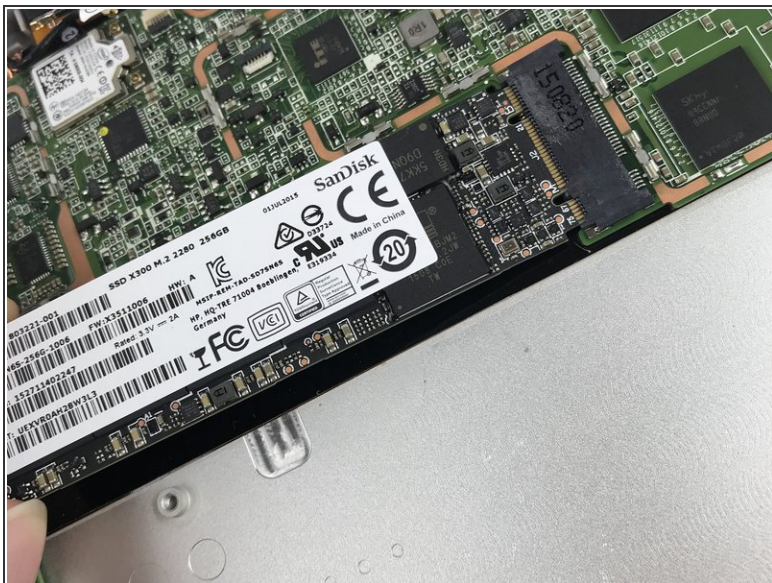
## Step 8



- Next, carefully peel the sticker on top of the SSD off.



## Step 9



- Carefully, pull the SSD out of the slot at an angle.

To reassemble your device, follow these instructions in reverse order.