



HP Spectre x360 13t-4000 Wifi Adapter Replacement

This guide will instruct you how to replace the Wifi Adapter on the HP Spectre x360 13t-4000.

Written By: Brandon Carvalho



INTRODUCTION

This guide will instruct you on how to remove and replace the Wifi Adapter. Replacement of the wifi adapter may be necessary if the device cannot connect to the internet.

TOOLS:

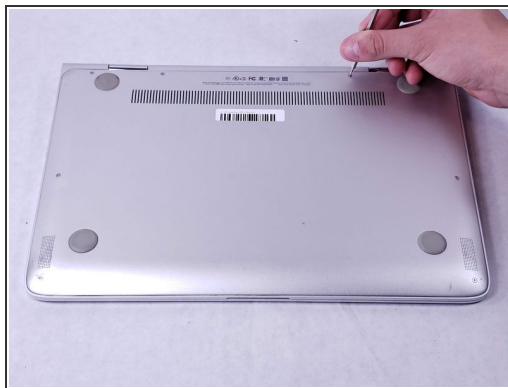
- [Phillips #1 Screwdriver](#) (1)
 - [T5 Torx Screwdriver](#) (1)
 - [Small Plastic Spudger](#) (1)
 - [Phillips #0 Screwdriver](#) (1)
-

Step 1 — Backplate



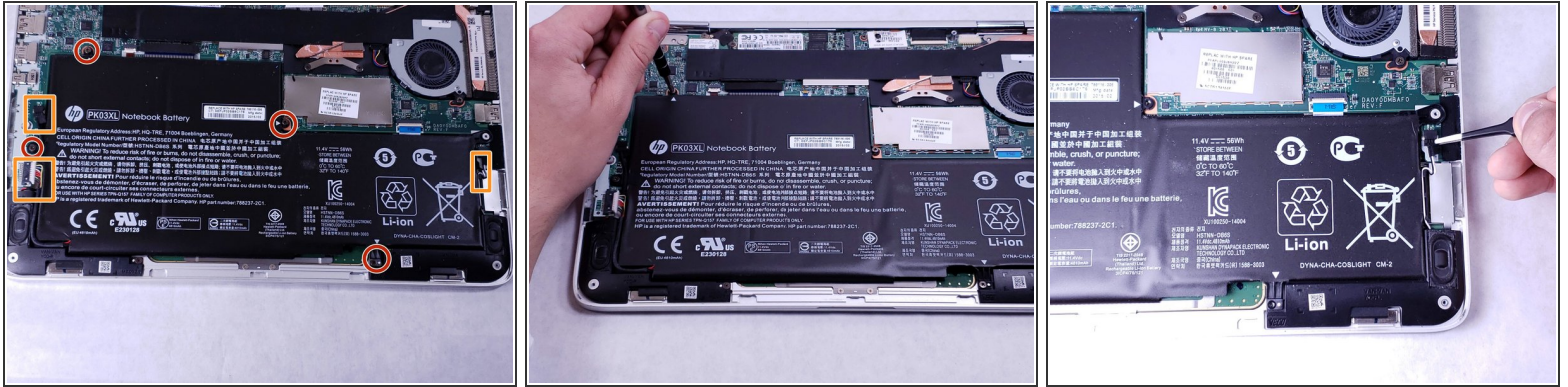
- Turn off and unplug the laptop.
- Flip over the laptop so that the bottom backplate is exposed.

Step 2



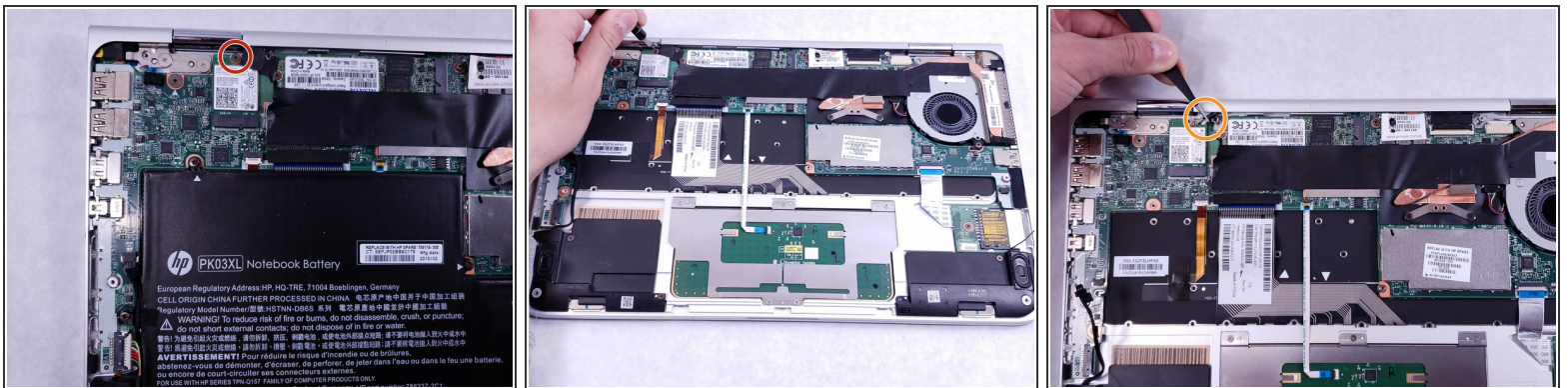
- With a hex T5 screwdriver remove the six 3mm screws holding the backplate.
- Using the same screwdriver, remove the two 7mm screws.
- With all the screws removed, use a plastic opening tool to lift off the backplate.

Step 3 — Battery



- With the backplate removed, remove the four 3 mm screws securing the battery with a Phillips #1 screwdriver.
- With the screws removed, disconnect the 3 wires connected to the battery.
- ⓘ Tweezers may be needed to remove the wires.

Step 4 — Wifi Adapter



- Using a Phillips#0 screwdriver, remove the 2 mm screw.
- Located to the right of the screw, there are two wires connected to the adapter. Using tweezers, carefully remove the wires.
- ⓘ There may be tape covering the wires.
- Now you can remove the adapter by pulling it from its socket.

To reassemble your device, follow these instructions in reverse order.