



HP Split 13-r010dx Hard Drive Replacement

This replacement guide will explain and demonstrate how to remove the harddrive from an HP Split 13-r010dx.

Written By: Kim



INTRODUCTION

A user will effectively understand how to remove a hard drive from the device.



TOOLS:

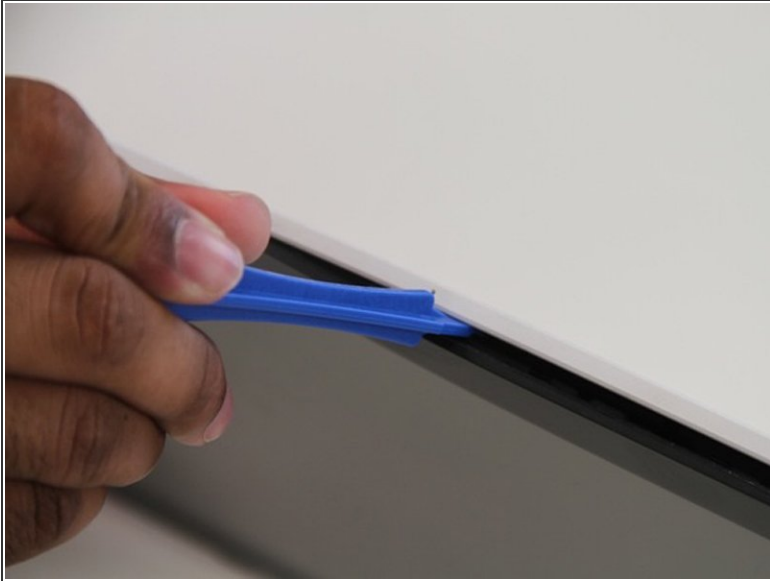
- [Phillips #0 Screwdriver](#) (1)
-

Step 1 — Front and Back Panel



- Locate the four screws at the bottom of the device. (Note that the keyboard attachment is missing from this device.)
- Use a Philips head #0 screwdriver to remove each of the screws (Size: 4mm)

Step 2



- Gently wedge the plastic opening tool in between where the display and back panel meet.
- Slowly and gently apply force to the plastic opening tool in a downwards motion to loosen the front panel from the back panel.
- Rotate the device so that the side is facing up and repeat the previous step for the sides.
- Do NOT attempt to wedge the plastic opening tool on the bottom . Once the sides and top are loose you are ready to continue to the next step.

Step 3



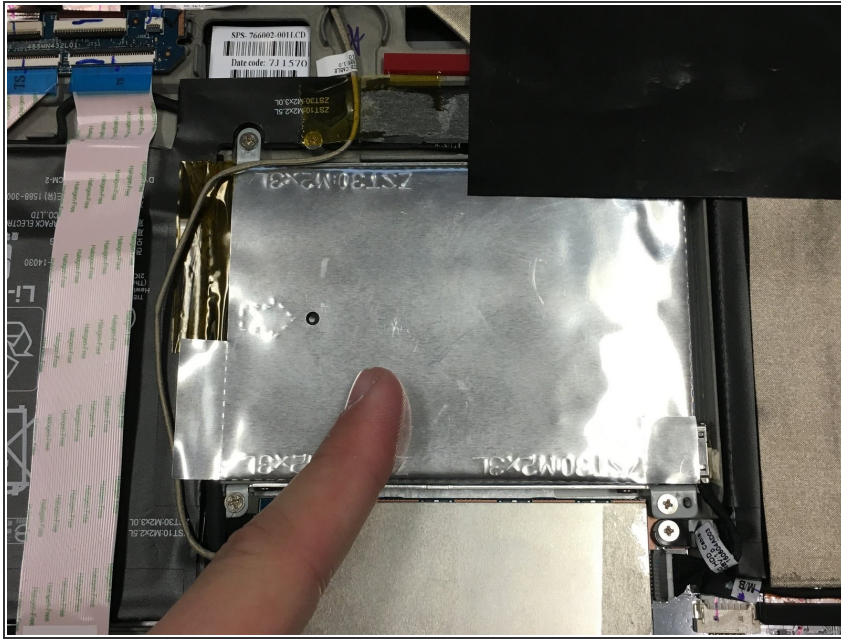
- Gently and slowly pull the front and back panel away from each other (in opposite directions). (Pulling them apart will not separate the two panels)
- Only separate the panels by a few inches from each other so that there is room to separate the front and back panel in the next step. Proceed to the next step.

Step 4



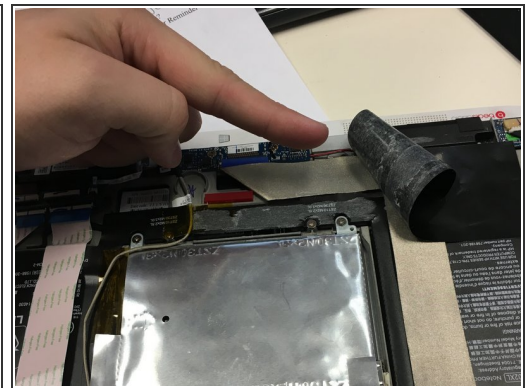
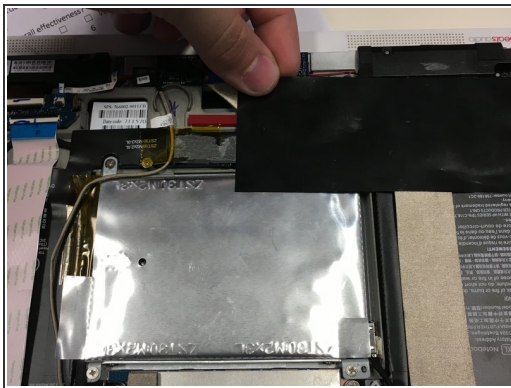
- Hold the back panel firmly and pull the front panel upwards to completely separate the front panel from the back panel.
- The device is now ready to be repaired or replacements installed.

Step 5 — Hard Drive



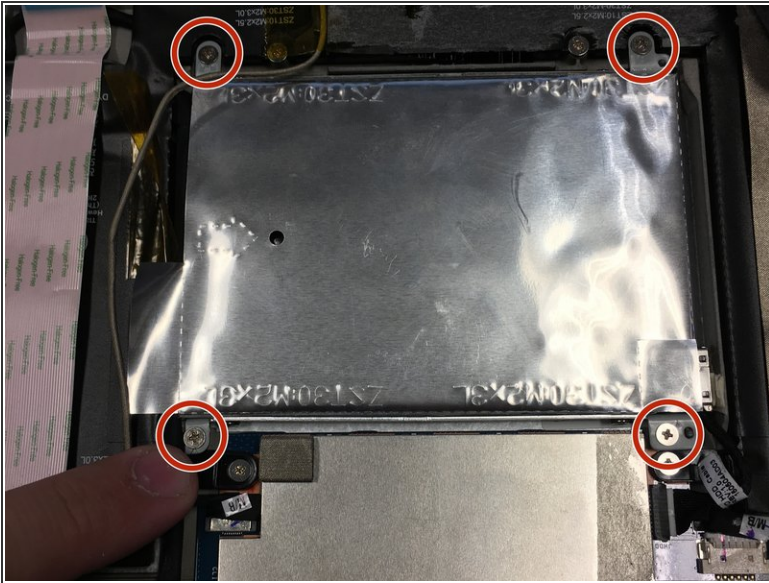
- Locate the hard drive. (The hard drive is located in the center of the device)

Step 6



- Locate the black strip of thermal resistant tape that is covering the upper right portion of the hard drive.
- Gently lift up with the tape.
- Fold the tape back away from the hard drive.

Step 7



- Locate the four screws (Size: 4mm) at each of the four corners of the hard drive.
- Remove the four screws using a #0 Phillips head screwdriver.

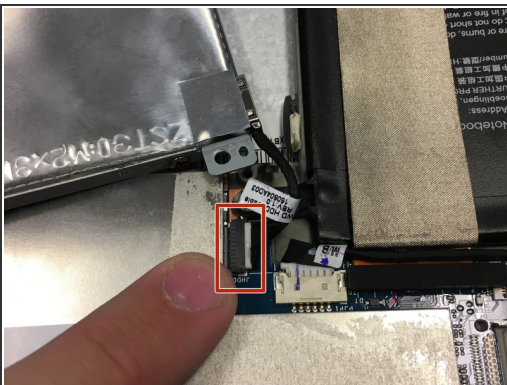
Step 8



- Locate the lift tab. (The lift tab is located at the bottom left corner of the hard drive).
- Gently lift up on the lift tab

⚠ Be cautious when lifting the hard drive from its designated slot, the hard drive is still connected to the device

Step 9



- Locate the connection of the hard drive to the device.
- Gently grasp the connector cord and pull horizontally to the right. (Very little force is needed to disconnect the cord).

Step 10



- The hard drive is no longer connected to the device. Lift the hard drive up vertically and set aside.
- The hard drive removal is completed.

To reassemble your device, follow these instructions in reverse order.