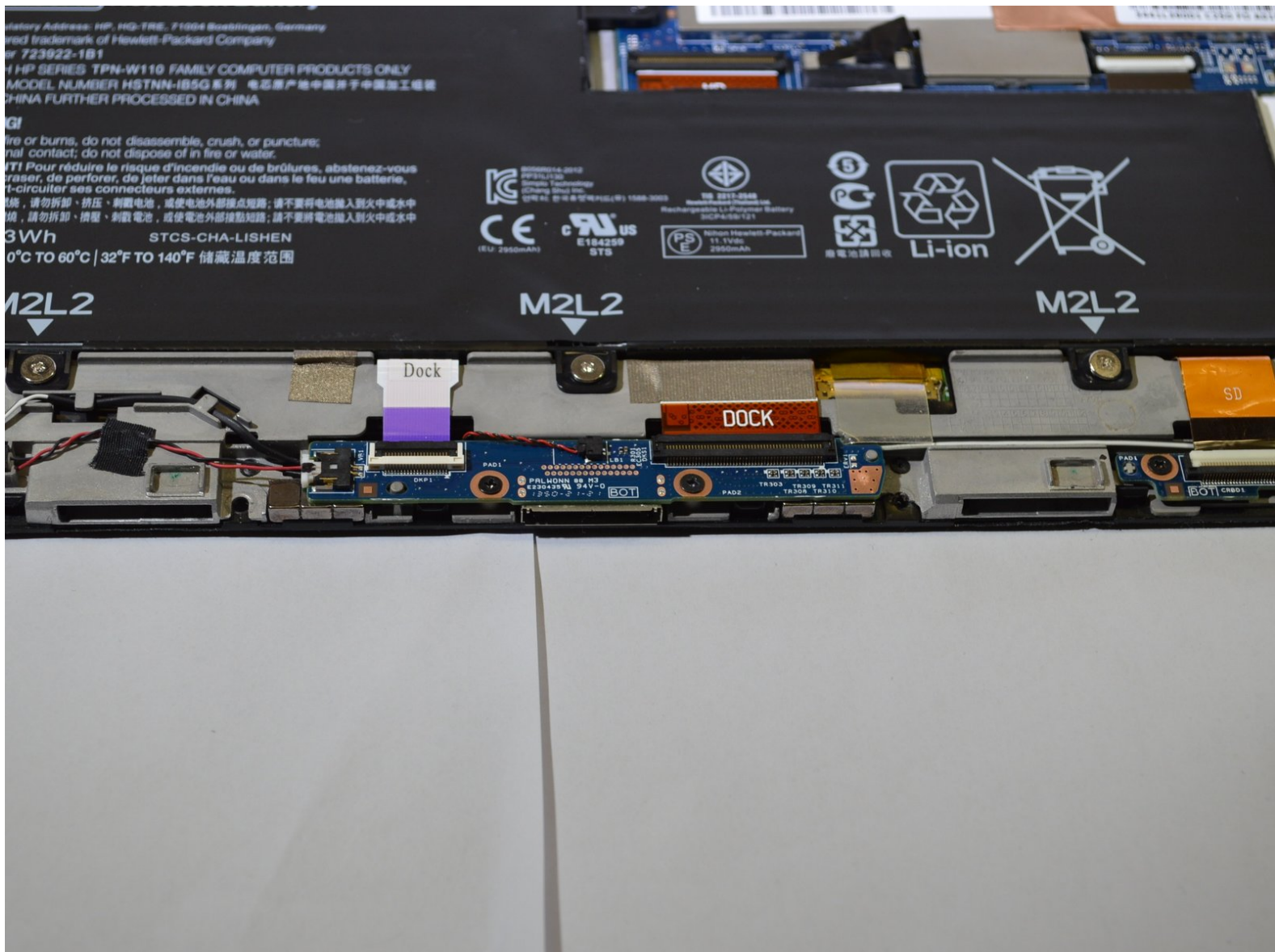




HP Split x2 13-g210dx Docking Port Replacement

How to replace the docking port in an HP Split x2 13-g210dx.

Written By: Darian Devries



INTRODUCTION

If the keyboard does not function when connected to the laptop display, or is operating in a faulty manner, then the docking port is defective. Use this guide to access, remove, and replace your docking port.



TOOLS:

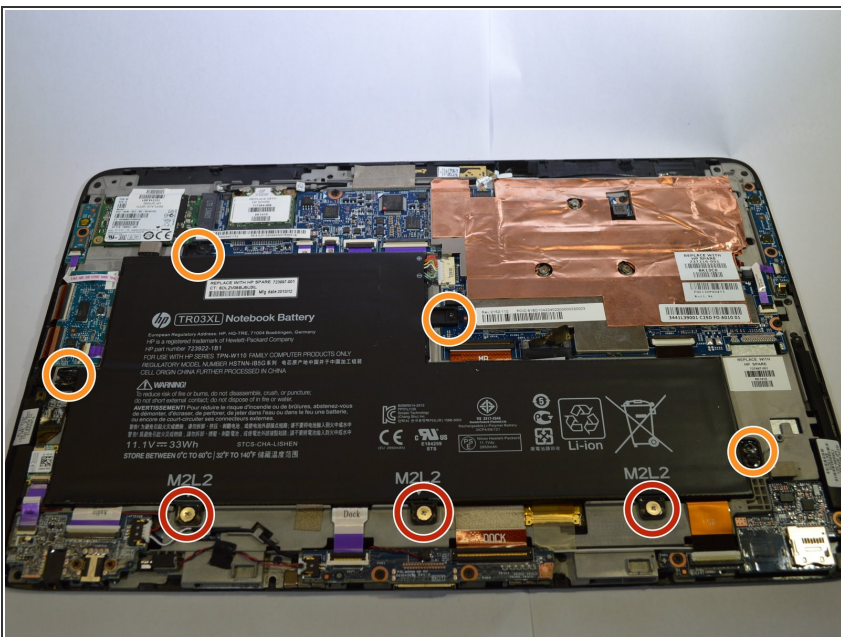
- [Phillips #0 Screwdriver](#) (1)
 - [Spudger](#) (1)
 - [iFixit Opening Tools](#) (1)
 - [Tweezers](#) (1)
-

Step 1 — Back Panel



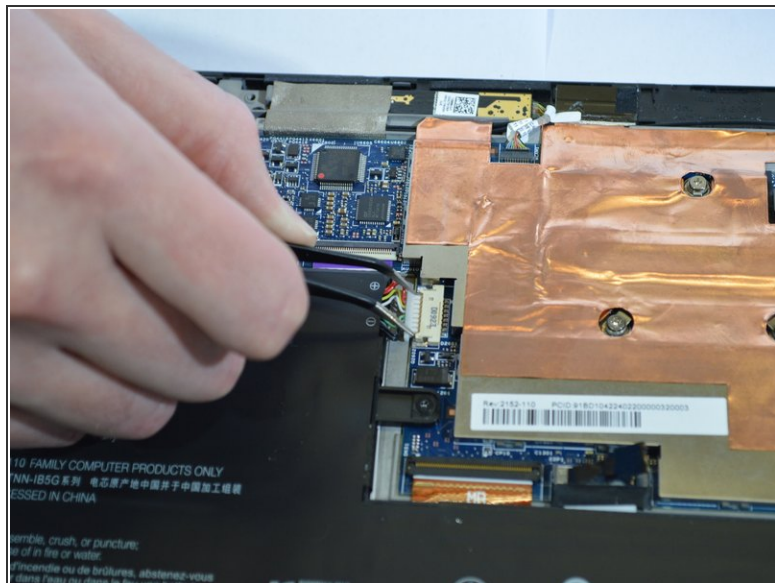
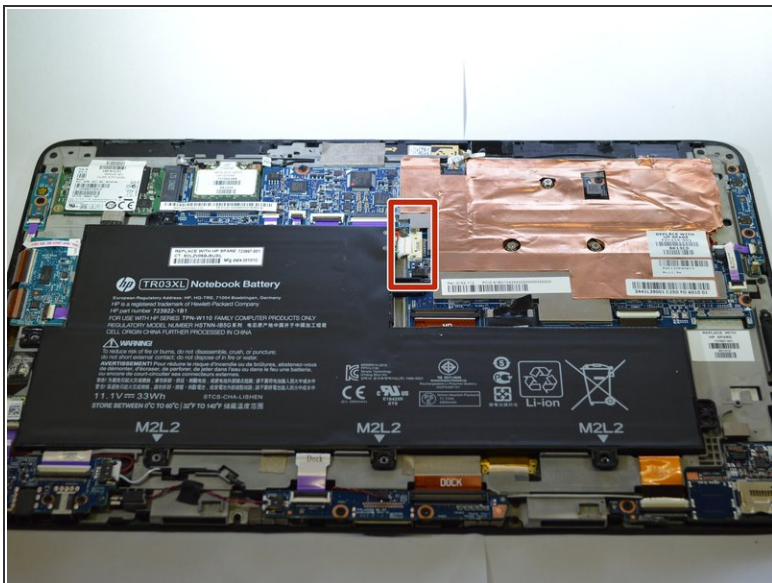
- Carefully peel off the felt cover that is found beneath the display along the bottom of the device.
- Use a spudger to gently scrape away the padding that hides the screws in each of the four locations.
- Remove the four 4-mm Phillips #0 screws.
- Run a spudger along the crease of the entire laptop and slowly pry off the back panel of the device, beginning with the bottom edge.
- ⓘ You will hear popping noises as the clips separate from each other.

Step 2 — Battery



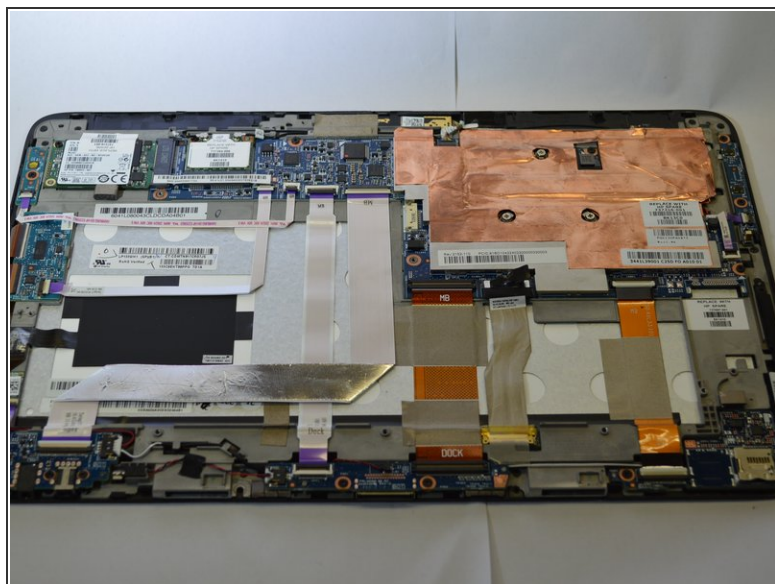
- Remove the three 6-mm Phillips #0 screws.
- Remove the four 4-mm Phillips #0 screws.

Step 3



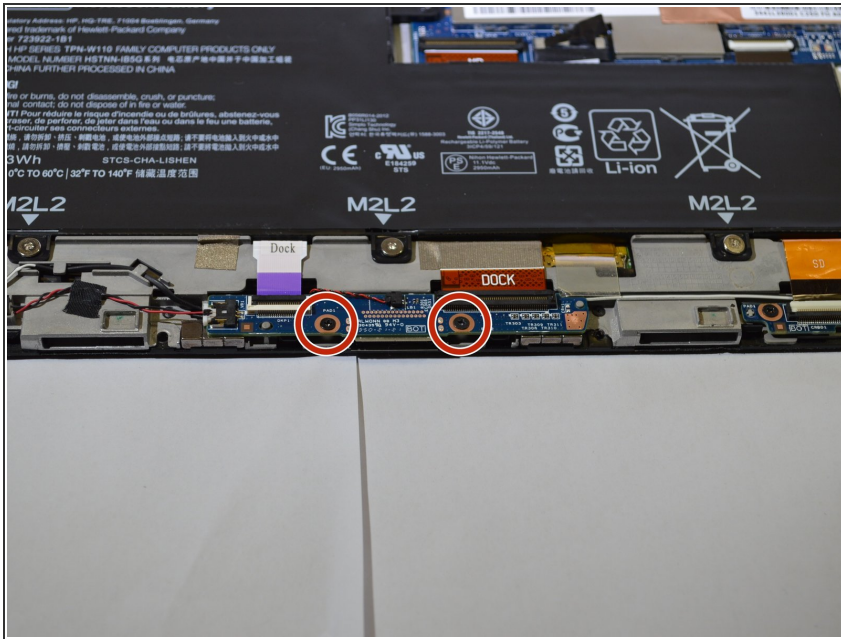
- Remove the white connector clip from the connector port using a sturdy tweezers.

Step 4



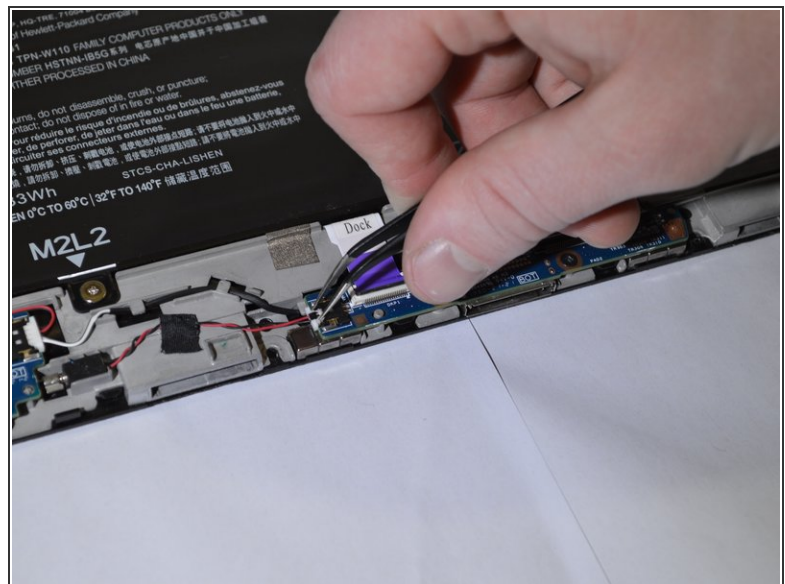
- Lift the battery away from the device.

Step 5 — Docking Port



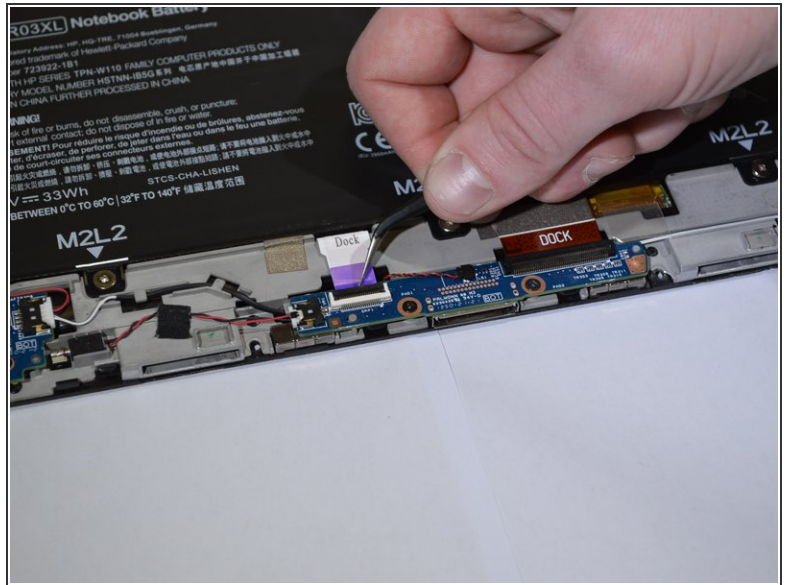
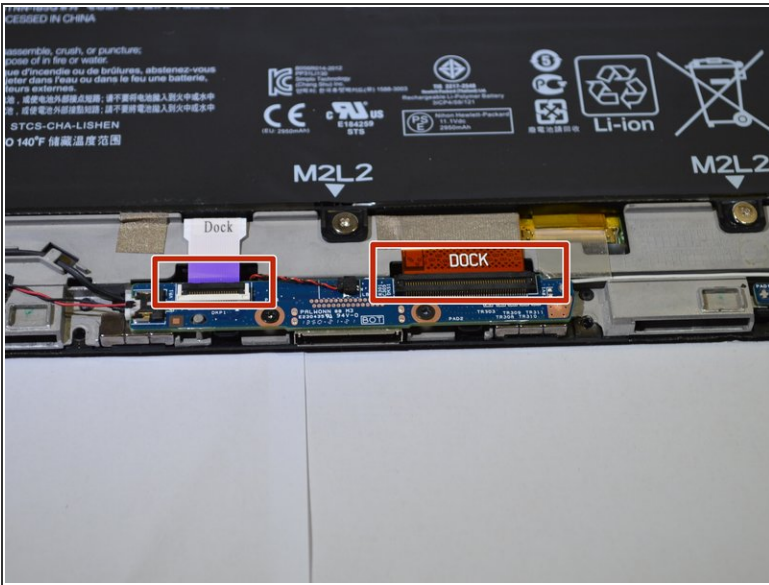
- Remove the two 4-mm Phillips #0 screws.

Step 6



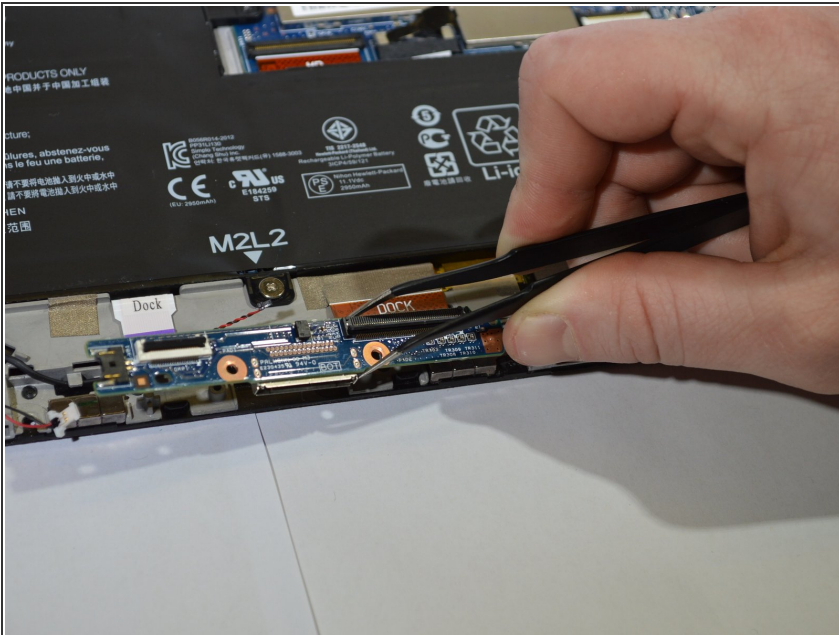
- Remove the clips from the docking port board with a sturdy pair of tweezers.

Step 7



- Remove the two ribbons labeled "Dock" at the top of the docking port board using tweezers or a sturdy plastic opening tool.

Step 8



- Lift the docking port away from the device.

To reassemble your device, follow these instructions in reverse order.

This document was generated on 2020-01-14 04:35:22 PM (MST).

