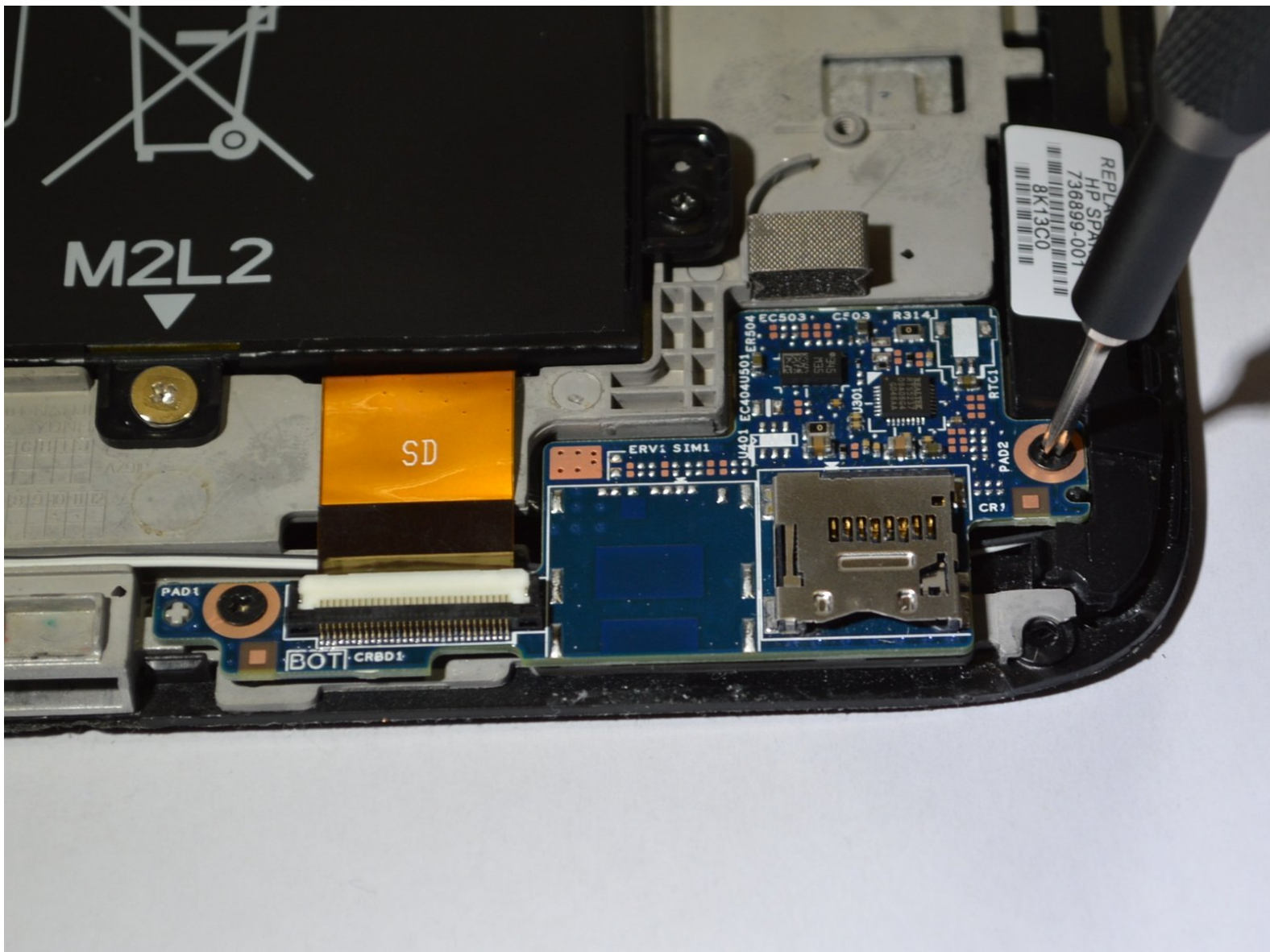




# HP Split x2 13-g210dx SD Port Replacement

How to replace the SD port in an HP Split x2 13-g210dx.

Written By: Darian Devries



## INTRODUCTION

If there are issues reading from or writing to the Secure Digital (SD) memory storage on the laptop, then the SD port is defective. Use this guide to access, remove, and replace your SD port.

---

### TOOLS:

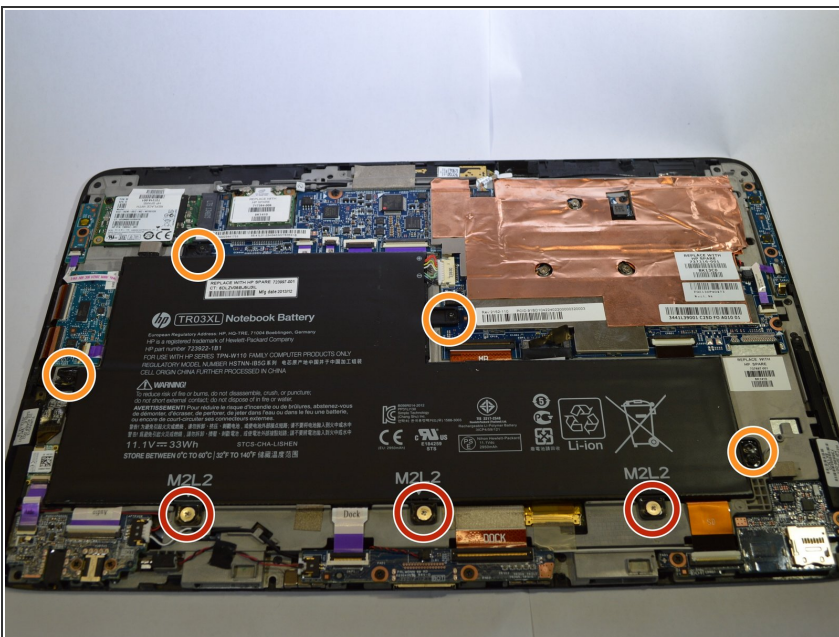
- [Phillips #0 Screwdriver](#) (1)
  - [Spudger](#) (1)
  - [Tweezers](#) (1)
  - [iFixit Opening Tools](#) (1)
-

## Step 1 — Back Panel



- Carefully peel off the felt cover that is found beneath the display along the bottom of the device.
- Use a spudger to gently scrape away the padding that hides the screws in each of the four locations.
- Remove the four 4-mm Phillips #0 screws.
- Run a spudger along the crease of the entire laptop and slowly pry off the back panel of the device, beginning with the bottom edge.
- ⓘ You will hear popping noises as the clips separate from each other.

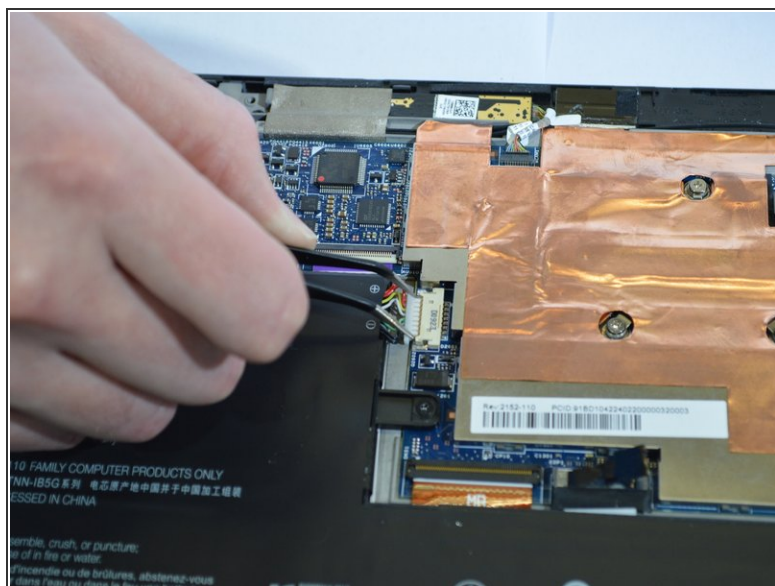
## Step 2 — Battery



- Remove the three 6-mm Phillips #0 screws.
- Remove the four 4-mm Phillips #0 screws.

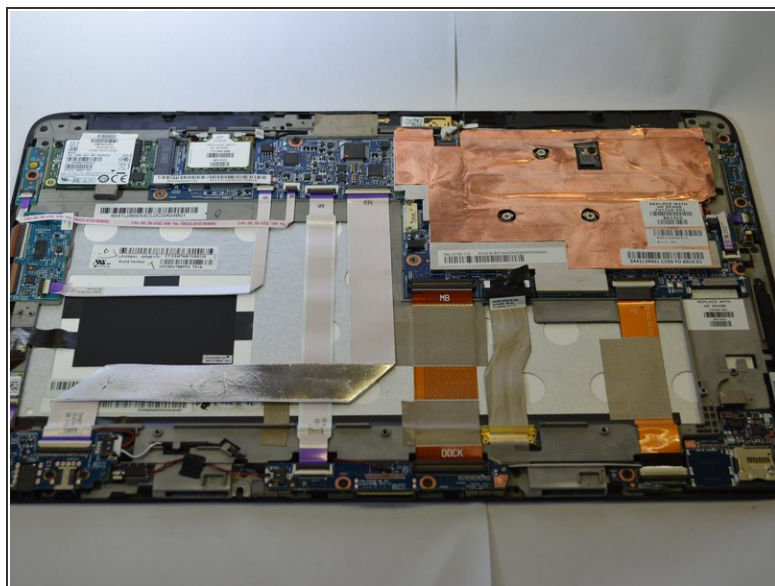


## Step 3



- Remove the white connector clip from the connector port using a sturdy tweezers.

## Step 4



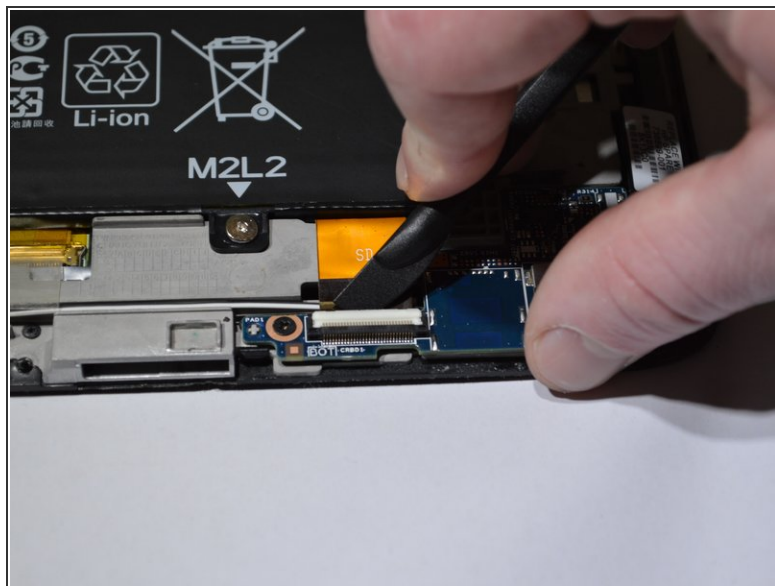
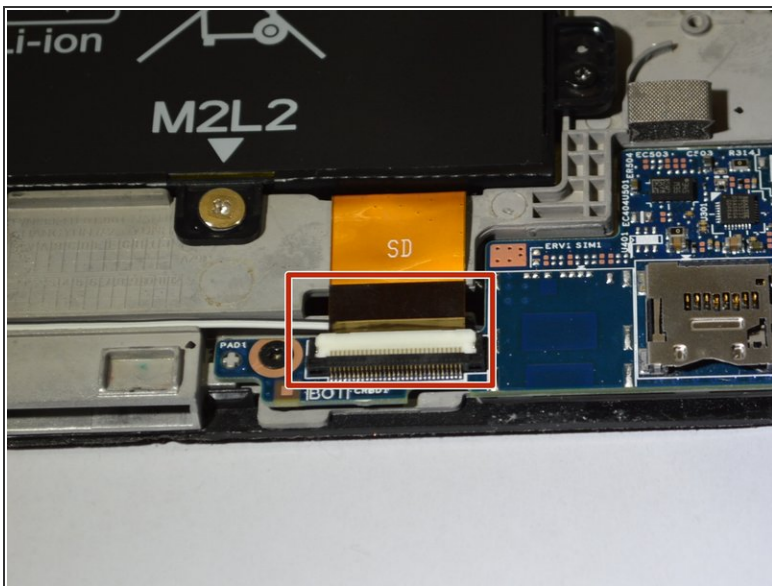
- Lift the battery away from the device.

## Step 5 — SD Port



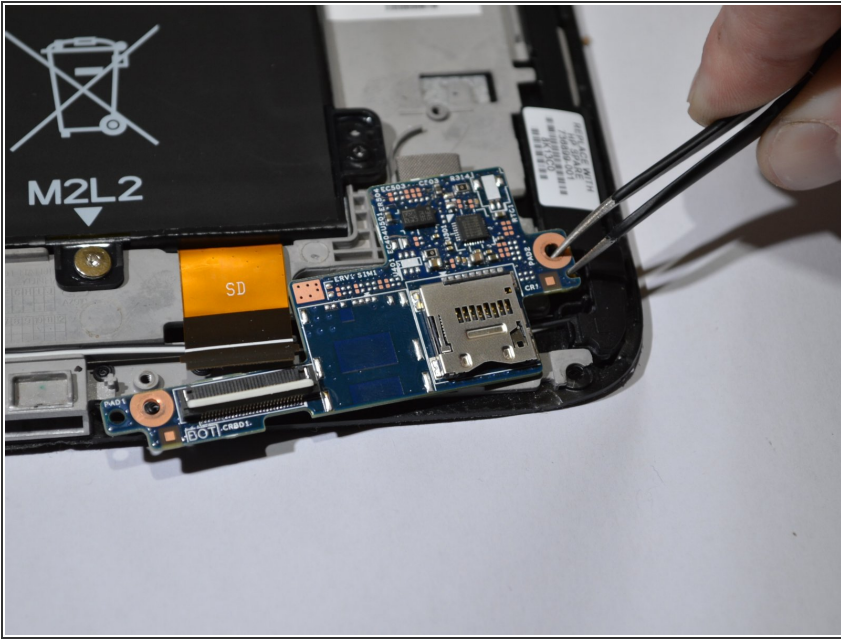
- Remove the two 4-mm Phillips #0 screws.

## Step 6



- Remove the yellow ribbon labeled "SD" in the left corner of the SD port board using tweezers or a sturdy plastic opening tool.

## Step 7



- Lift the SD port away from the device.

To reassemble your device, follow these instructions in reverse order.