



# HP Split x2 13-g210dx Speakers Replacement

How to replace the speakers in an HP Split x2 13-g210dx.

Written By: Darian Devries



## INTRODUCTION

If the audio is distorted on the laptop or the computer has difficulty playing sounds, then one or both of the speakers are defective. Use this guide to access, remove, and replace your speaker(s).

---

### TOOLS:

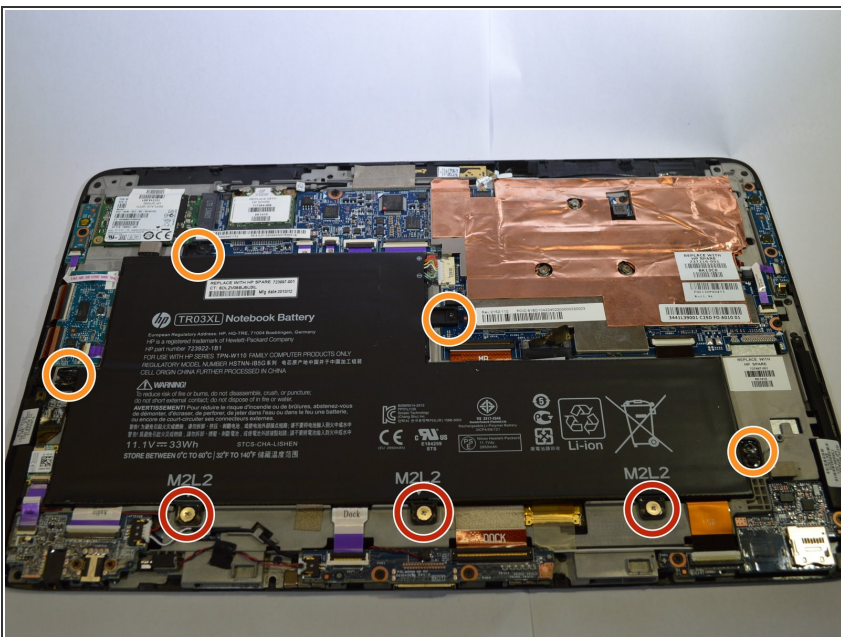
- [Phillips #0 Screwdriver](#) (1)
  - [Spudger](#) (1)
  - [iFixit Opening Tools](#) (1)
  - [Tweezers](#) (1)
-

## Step 1 — Back Panel



- Carefully peel off the felt cover that is found beneath the display along the bottom of the device.
- Use a spudger to gently scrape away the padding that hides the screws in each of the four locations.
- Remove the four 4-mm Phillips #0 screws.
- Run a spudger along the crease of the entire laptop and slowly pry off the back panel of the device, beginning with the bottom edge.
- ⓘ You will hear popping noises as the clips separate from each other.

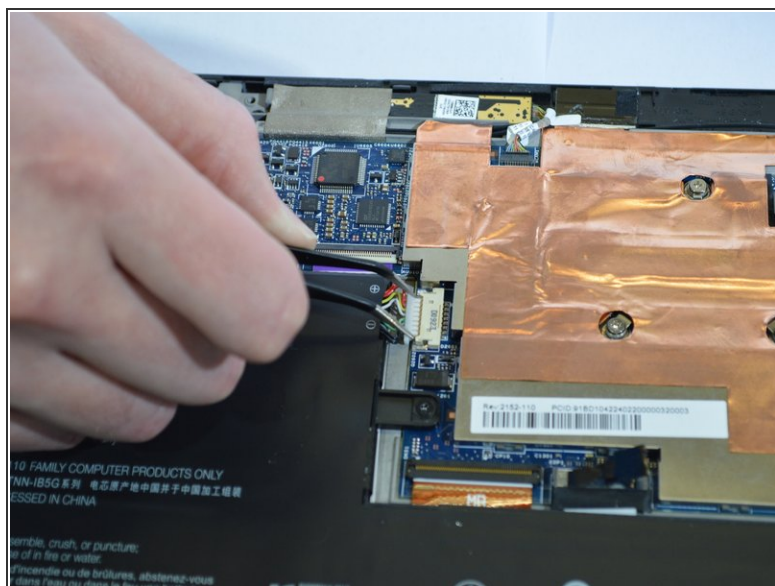
## Step 2 — Battery



- Remove the three 6-mm Phillips #0 screws.
- Remove the four 4-mm Phillips #0 screws.

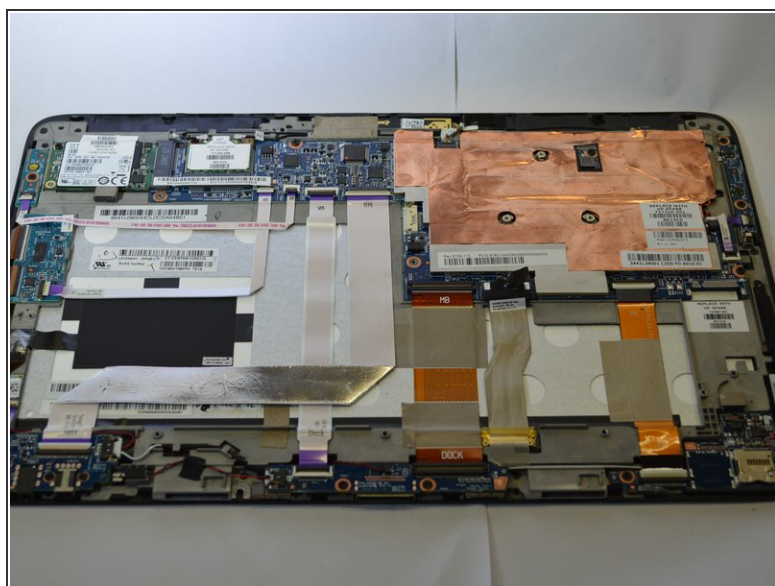


## Step 3



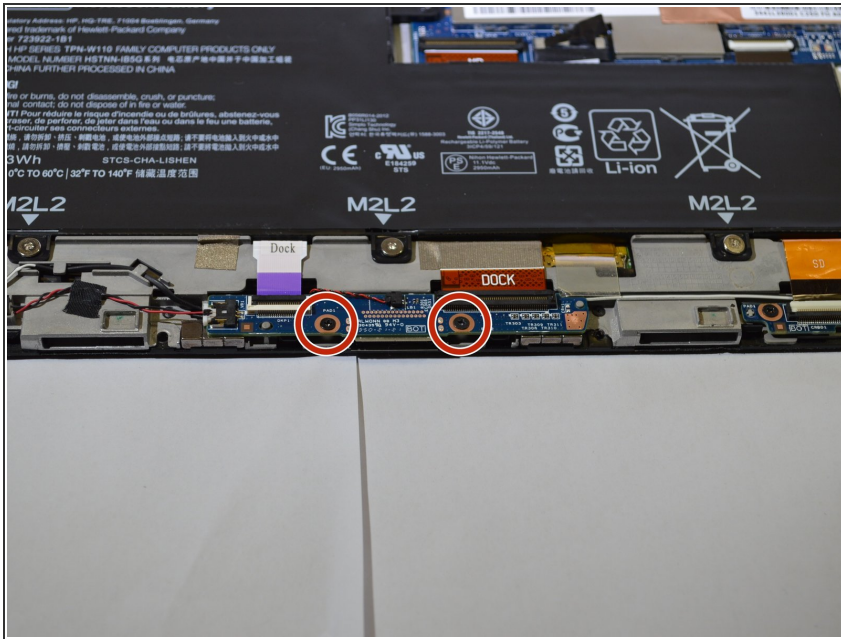
- Remove the white connector clip from the connector port using a sturdy tweezers.

## Step 4



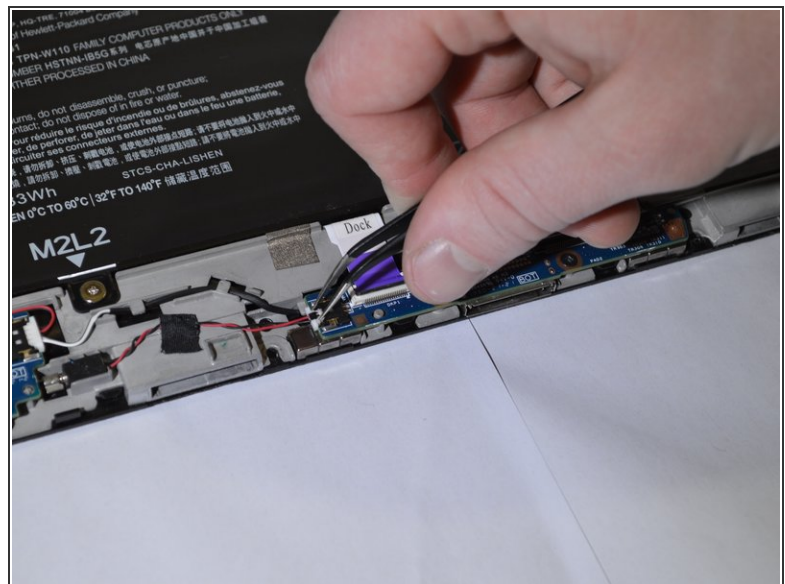
- Lift the battery away from the device.

## Step 5 — Docking Port



- Remove the two 4-mm Phillips #0 screws.

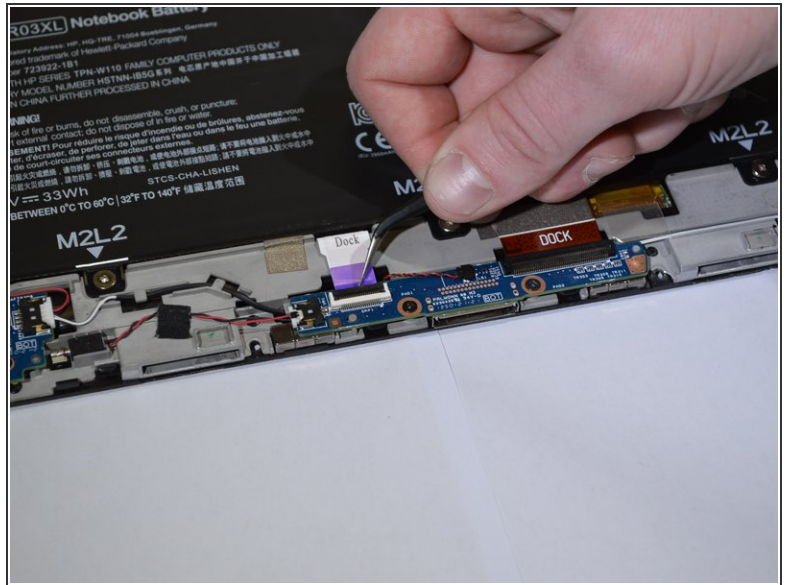
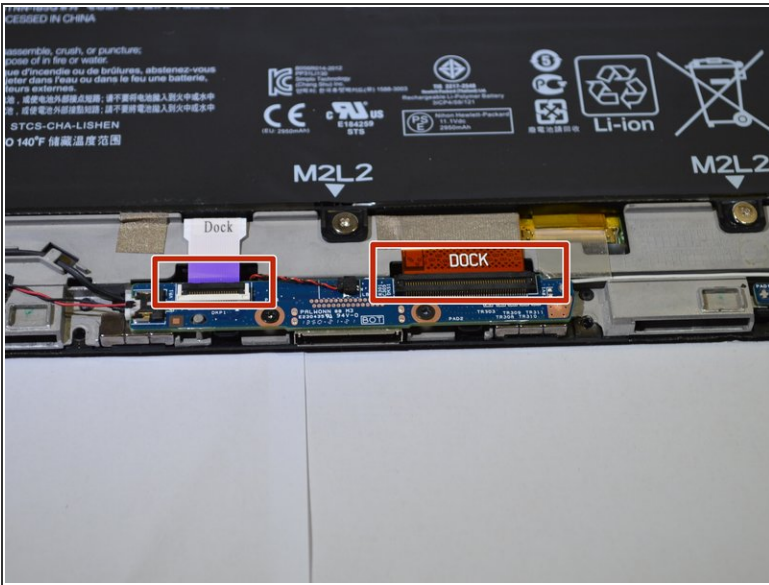
## Step 6



- Remove the clips from the docking port board with a sturdy pair of tweezers.

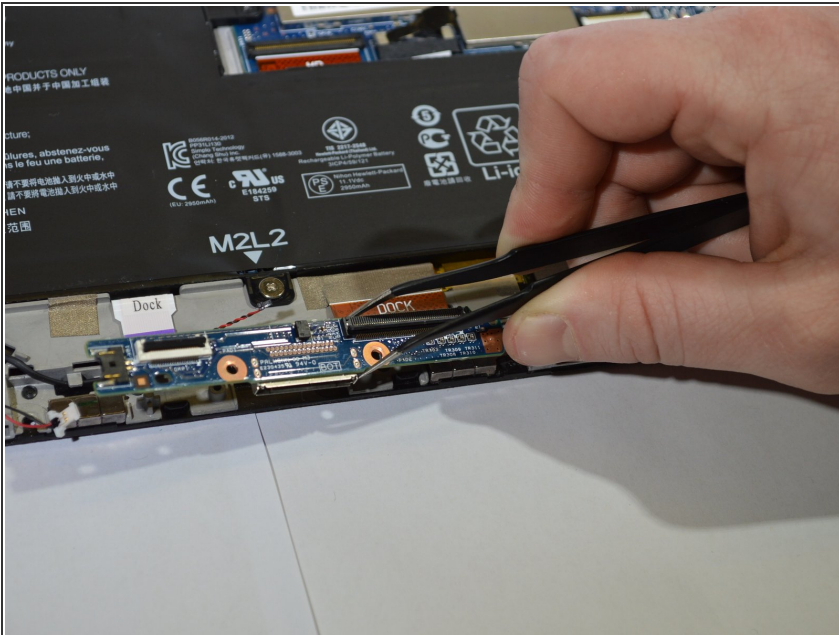


## Step 7



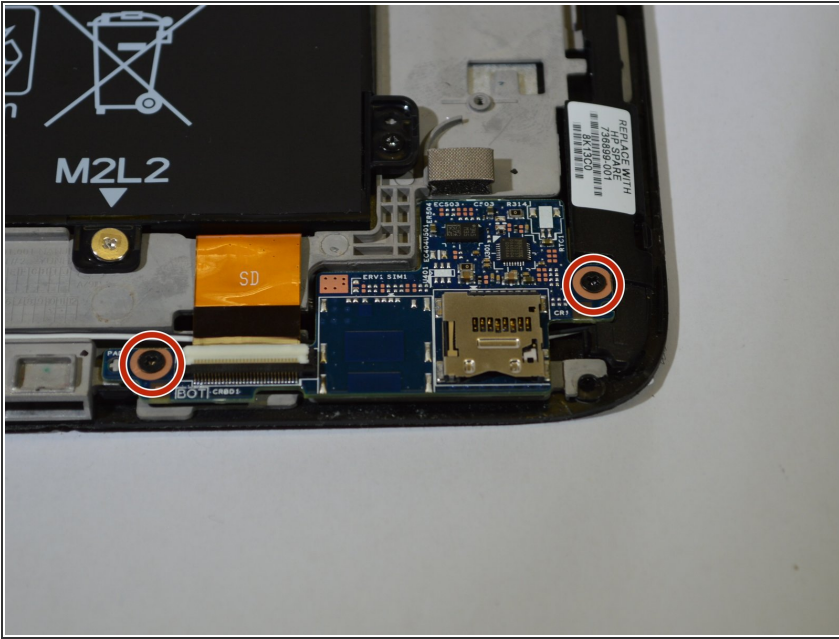
- Remove the two ribbons labeled "Dock" at the top of the docking port board using tweezers or a sturdy plastic opening tool.

## Step 8



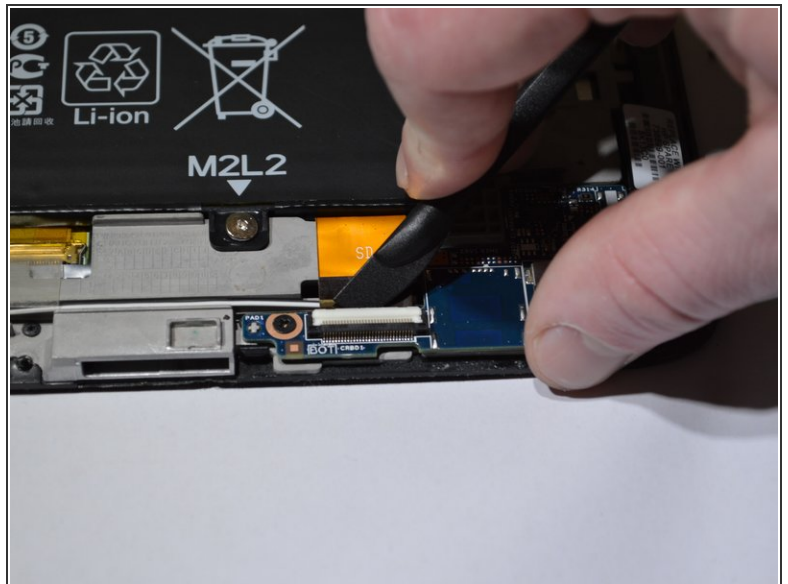
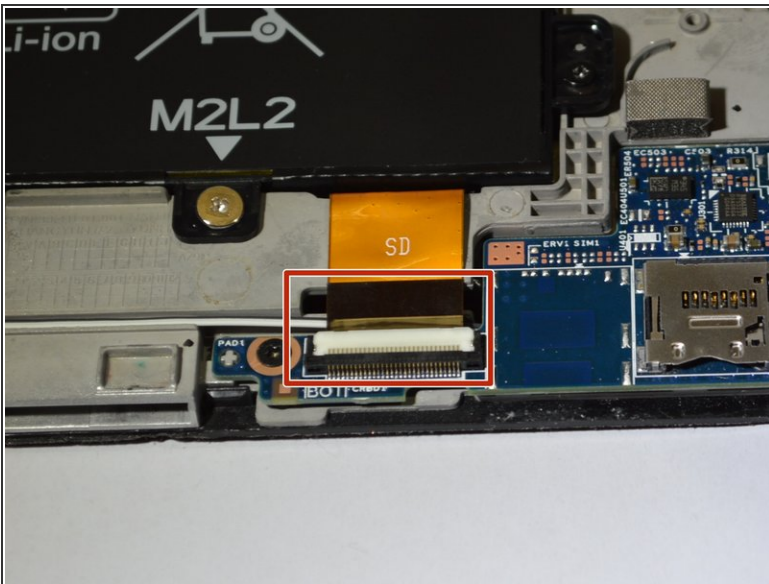
- Lift the docking port away from the device.

## Step 9 — SD Port



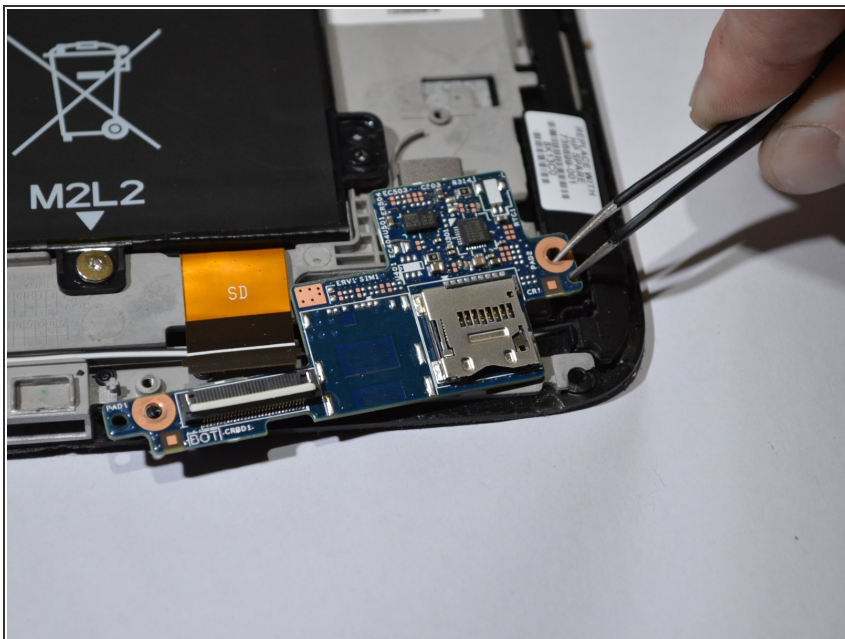
- Remove the two 4-mm Phillips #0 screws.

## Step 10



- Remove the yellow ribbon labeled "SD" in the left corner of the SD port board using tweezers or a sturdy plastic opening tool.

## Step 11



- Lift the SD port away from the device.

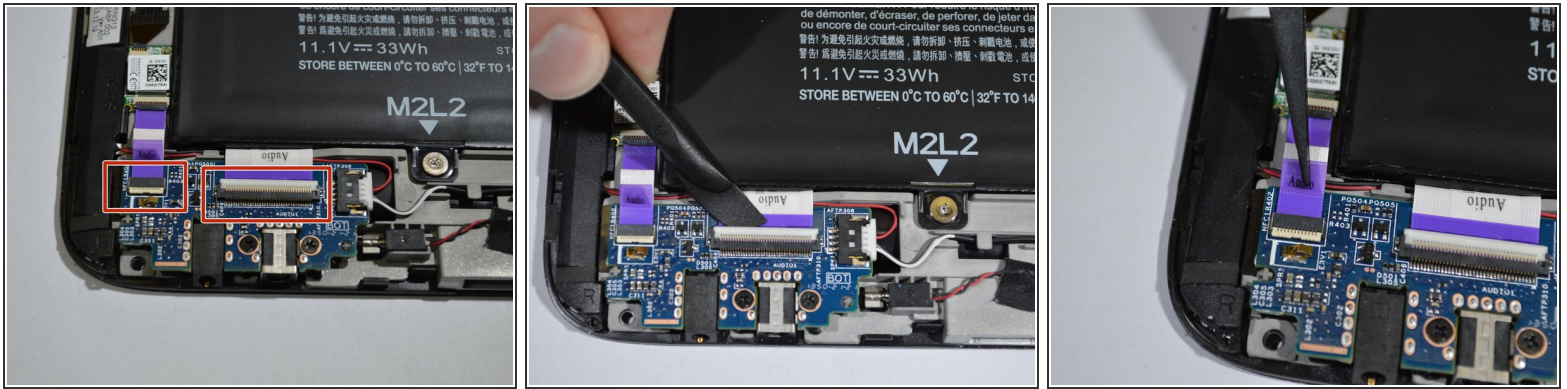
## Step 12 — Audio Port



- Remove the two 4-mm Phillips #0 screws.

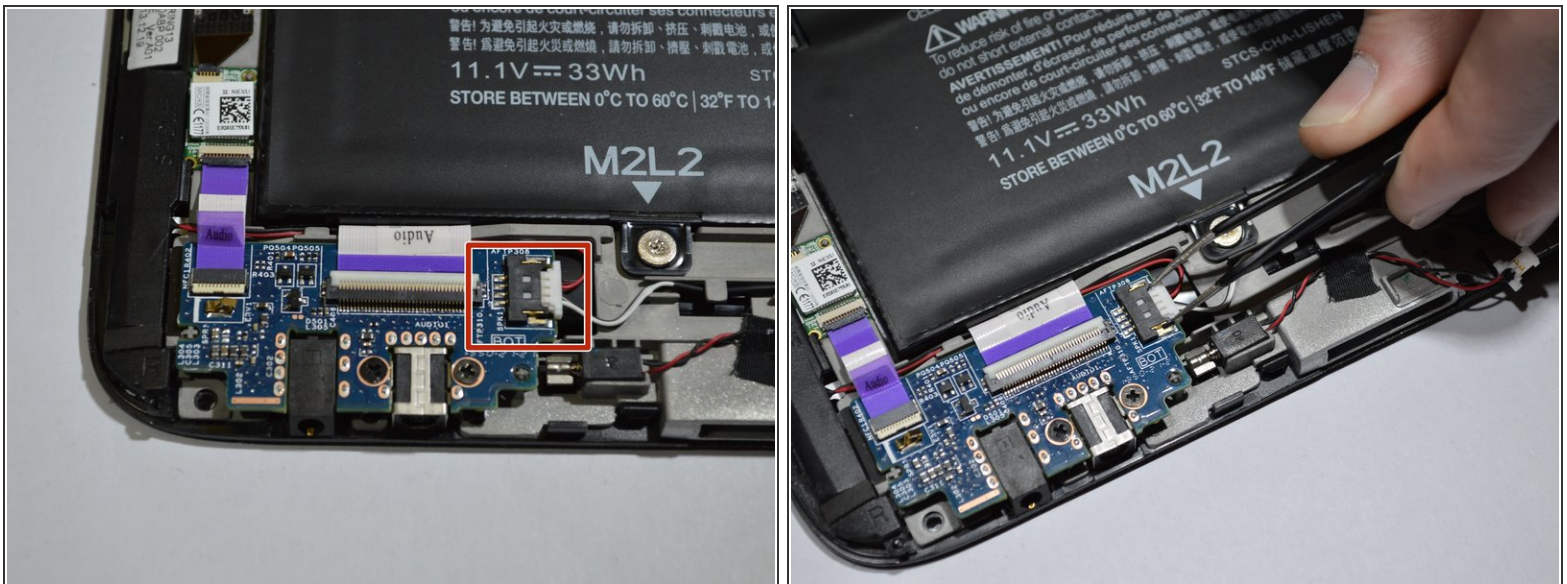


## Step 13



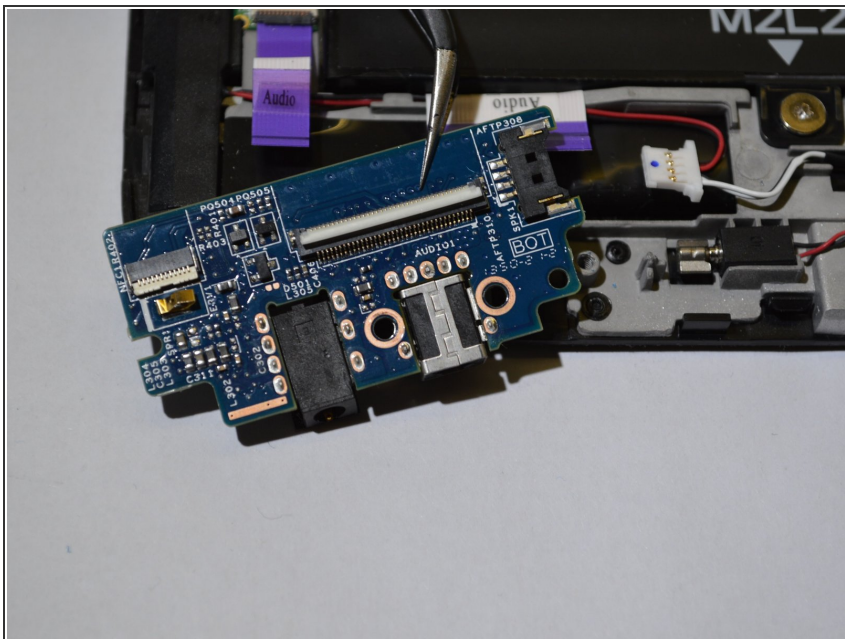
- Remove the two purple ribbons labeled "Audio" at the top of the audio port board using tweezers or a sturdy plastic opening tool.

## Step 14



- Remove the white clip at the top right corner of the audio port board using tweezers.

## Step 15



- Lift the Audio port away from the device.

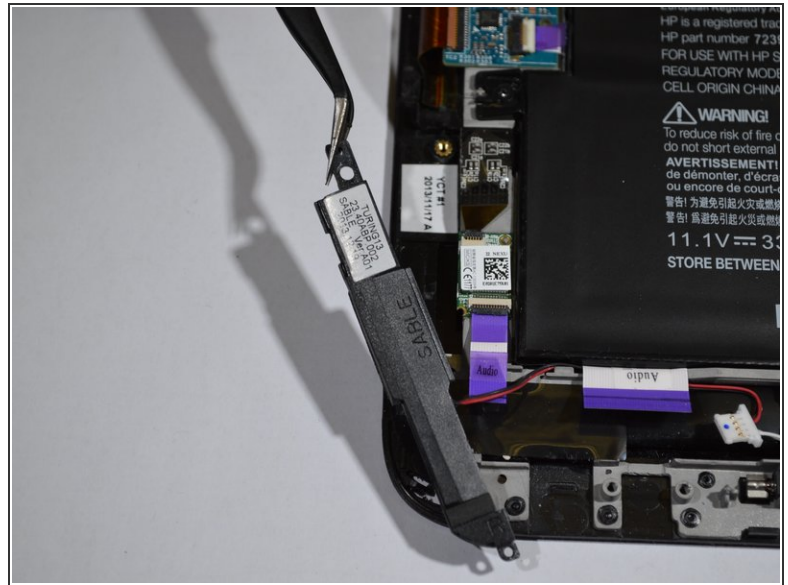
## Step 16 — Speakers



- Remove the 4-mm Phillips #0 screw.
- Lift the left speaker away from the device.

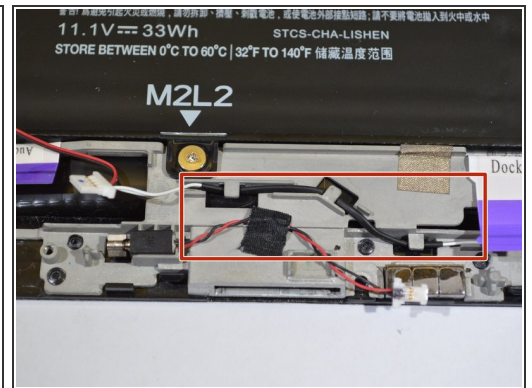
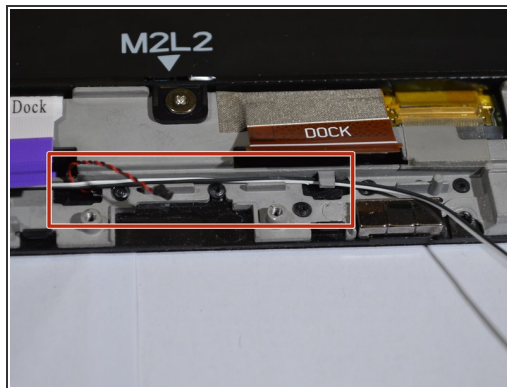
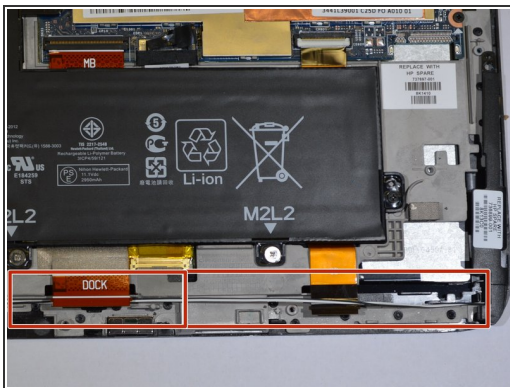


## Step 17



- Remove the 4-mm Phillips #0 screw from the same location as found on the left speaker.
- Lift the right speaker away from the device.

## Step 18



- Carefully remove the bonded white and black speaker wires running along the bottom of the control board from the fastening clips.
- Lift the speaker assembly away from the device.

To reassemble your device, follow these instructions in reverse order.