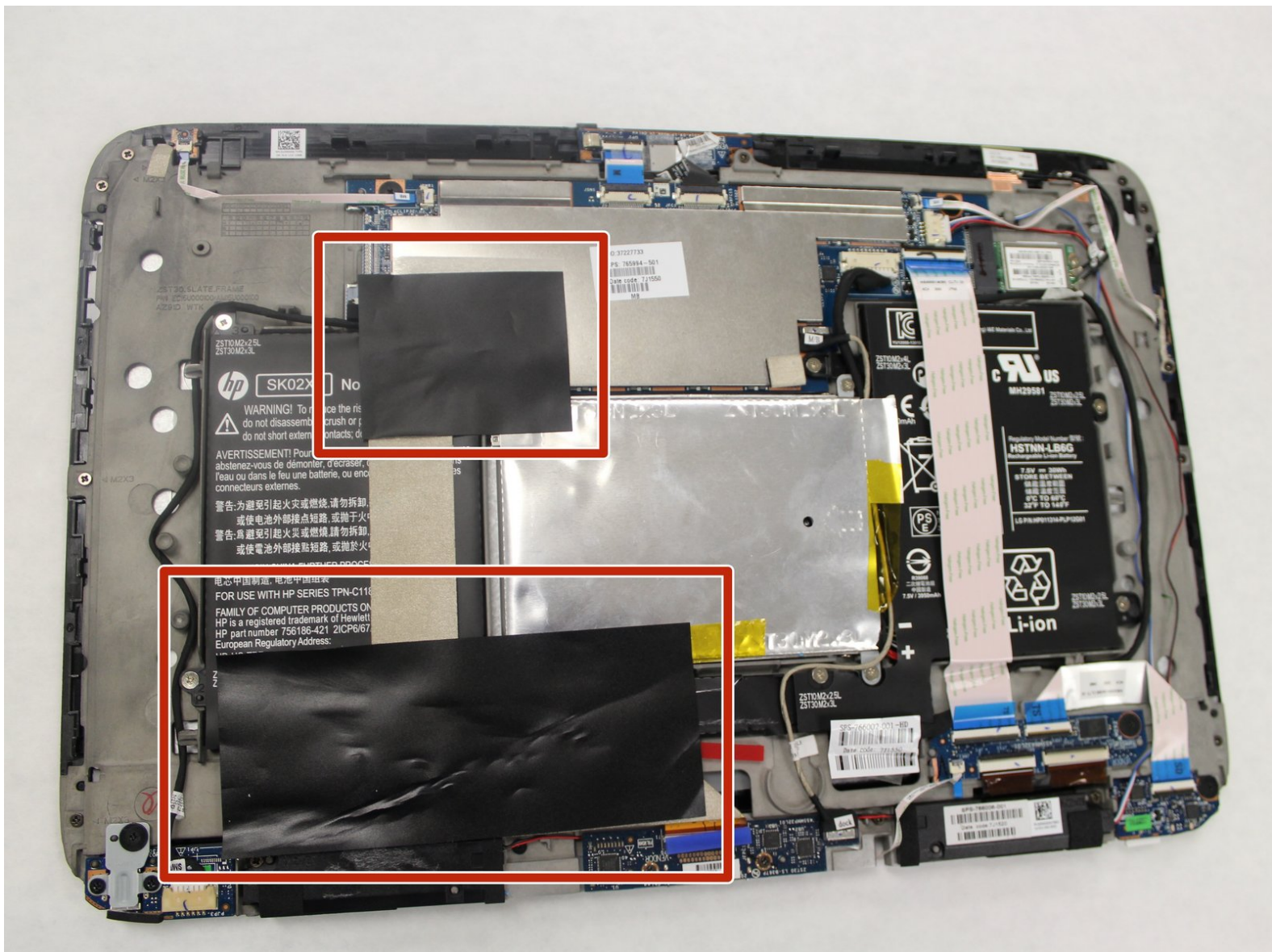




HP Split x2 Battery Replacement

Easy step by step process to replace the battery.

Written By: Alvaro Esperanca



INTRODUCTION

This is a step by step guide on replacing an old or damaged battery of an HP Split x2 with a new battery unit.



TOOLS:

- [Tweezers](#) (1)
 - [iFixit Opening Tools](#) (1)
 - [64 Bit Driver Kit](#) (1)
-

Step 1 — Rear Cover



- ⚠ Opening the device voids the manufacturer warranty.
- ⚠ Power down the HP Split x2 before beginning the repair
- Separate the tablet from the keyboard by pushing the slider to the left and lifting the tablet from the keyboard.

Step 2



- Remove the four white caps on the bottom edge of the tablet.
- ⓘ Use a tweezer to grasp white caps.
- ⓘ The white caps are easily lost. Store them in a secure place.

Step 3



- Use a Phillips #000 screwdriver to remove the four 3mm screws.

Step 4



- Use a plastic opening tool to pry the tabs on the top, left and right sides of the tablet.

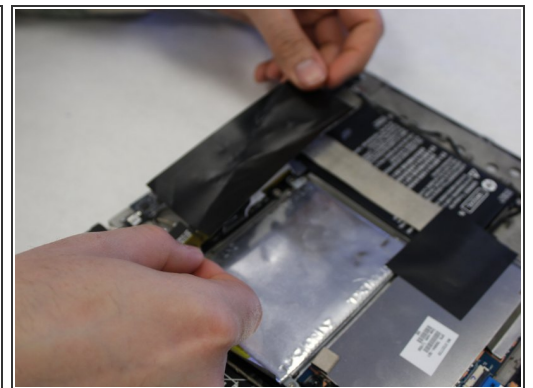
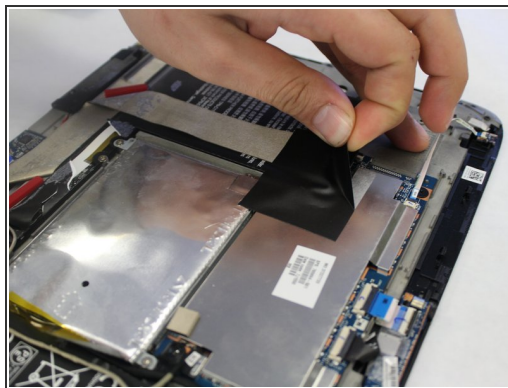
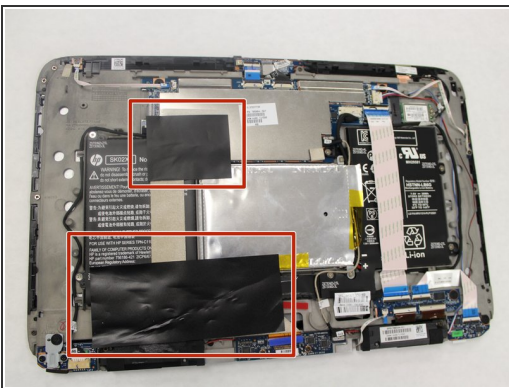
i Only the top and sides have tabs. Remove all tabs before lifting screen.

Step 5



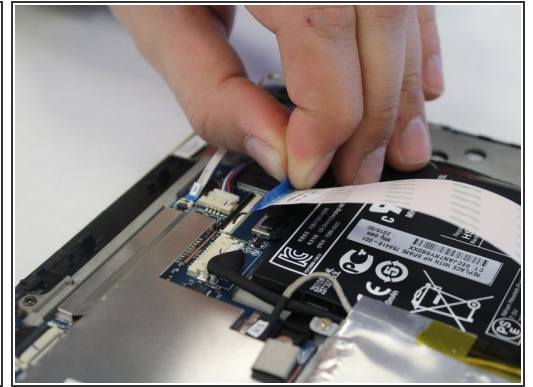
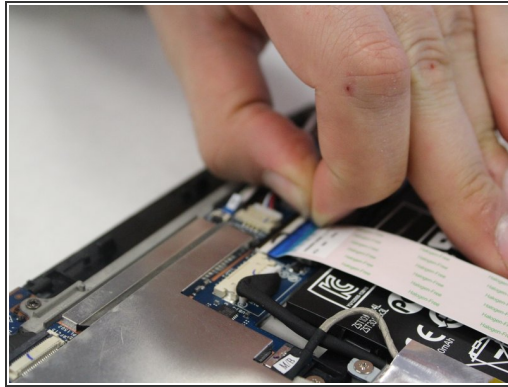
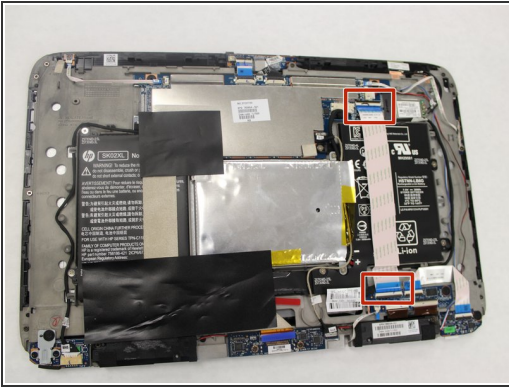
- Separate the cover and the screen.
- Gently lift the screen out of the cover.

Step 6 — Battery



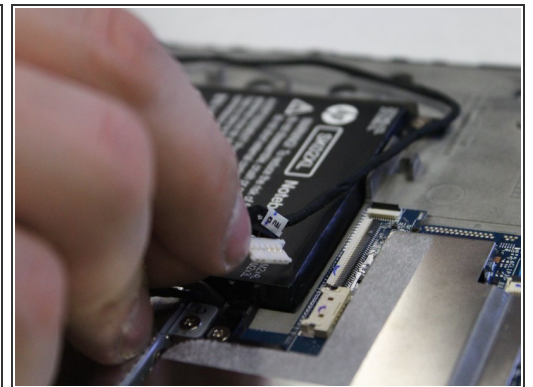
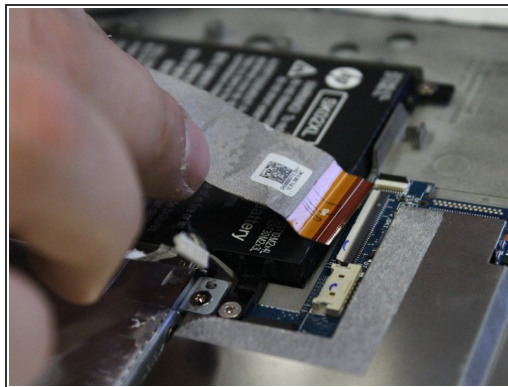
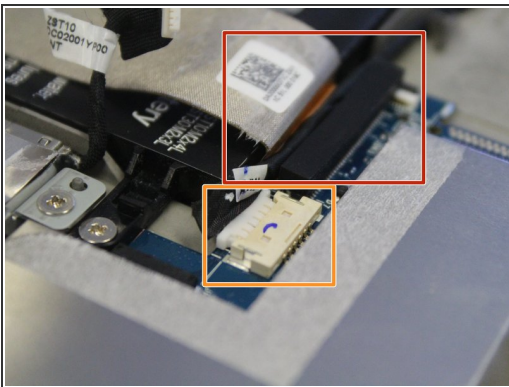
- Remove black stickers

Step 7



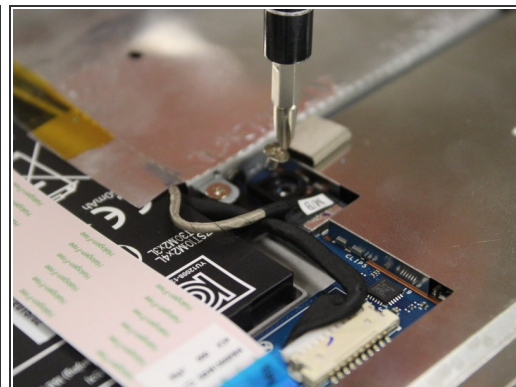
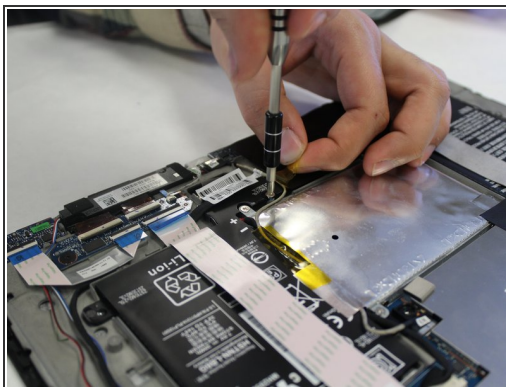
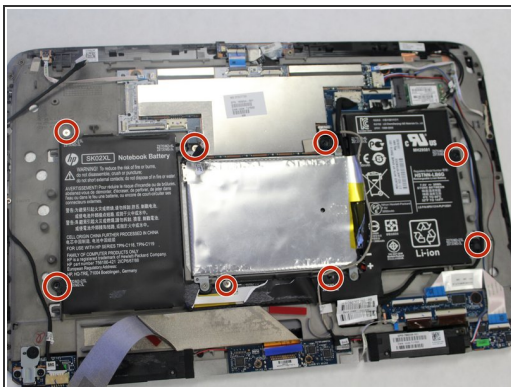
- Pull on the blue ribbon to disconnect the cable
- ❗ Disconnect both ends of the cable

Step 8



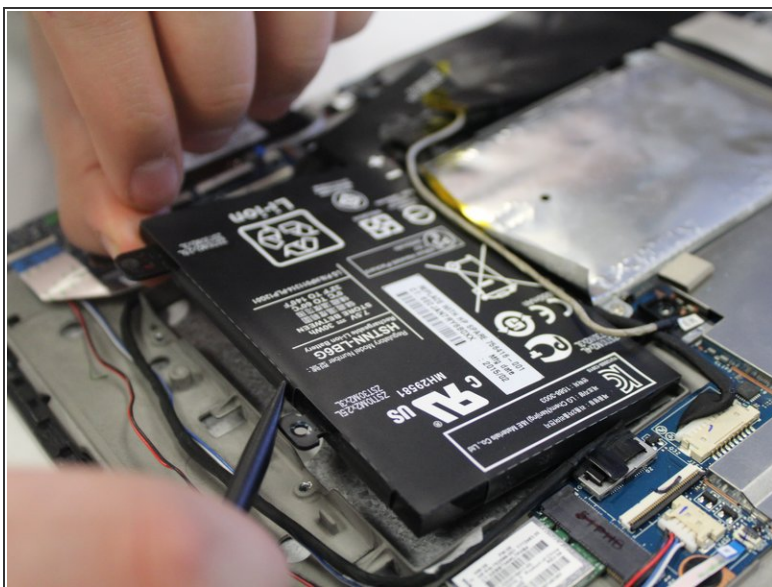
- Flip up the retaining flap with either a spudger or your fingertips.
- Disconnect the ribbon cable by gently pulling on it.
- Disconnect the sliding connector with the pointed tip of the spudger and gently remove the cable.

Step 9



- Remove all eight 3mm Phillips screws using a J1 screw head.

Step 10



- Gently lift up the battery as a whole
 - ⓘ Make sure the battery is free to move on both ends.
 - ⓘ Battery has two cells connected by a bridge making it a unit.

To reassemble your device, follow these instructions in reverse order.