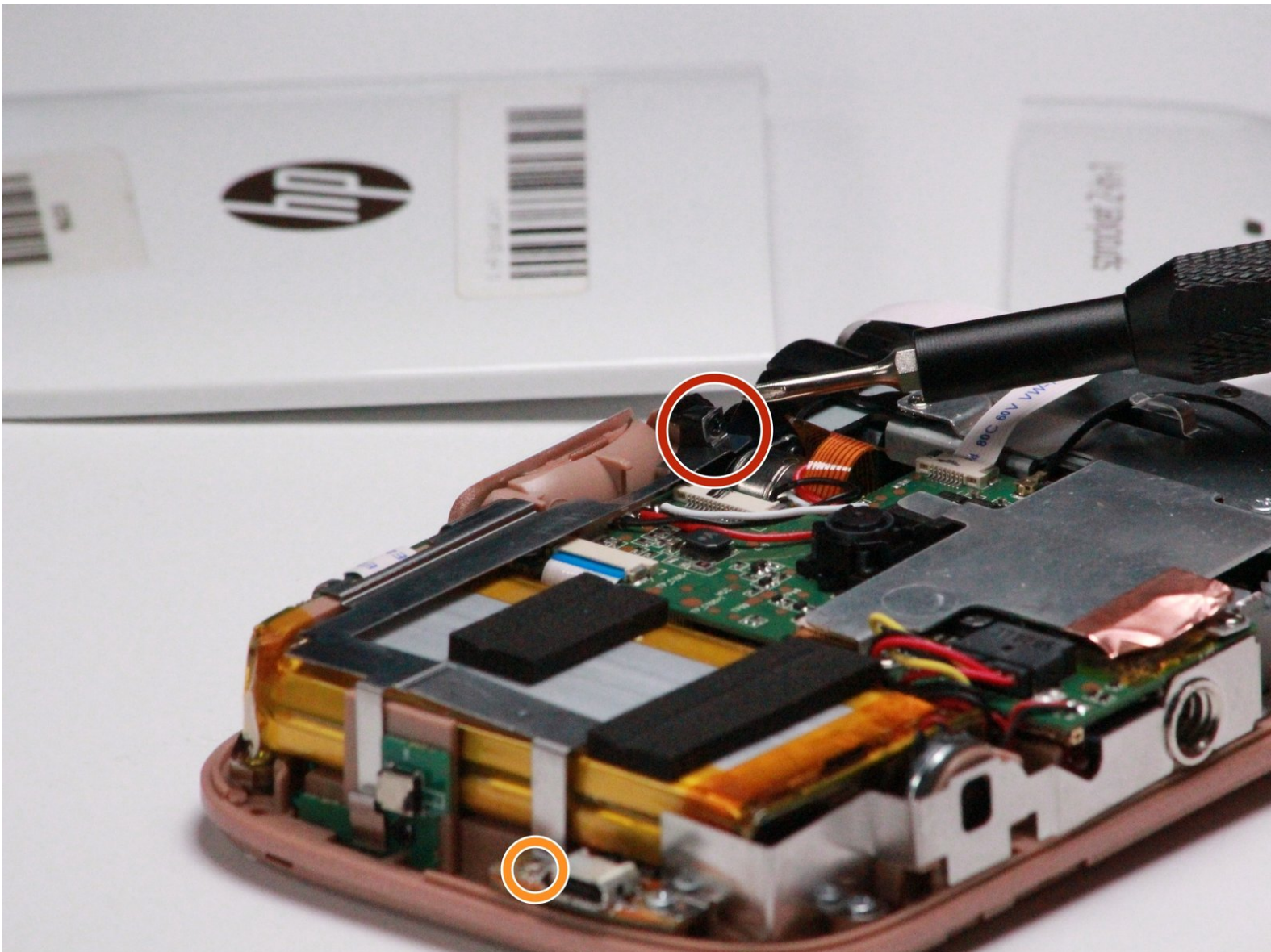




HP Sprocket 2-in-1 Battery Replacement

This guide will help one gain access and remove the internal battery within the HP Sprocket 2-in-1.

Written By: Paulo Warren



INTRODUCTION

This guide will help to assist in the removal of the HP Sprocket 2-in-1 battery. Batteries can become damage when exposed to extreme temperatures, be sure to complete this tutorial in a well lit, room temperature environment.



TOOLS:

- [J00 JIS Screwdriver](#) (1)
 - [iFixit Opening Tools](#) (1)
 - [Jimmy](#) (1)
-

Step 1 — Outer Casing



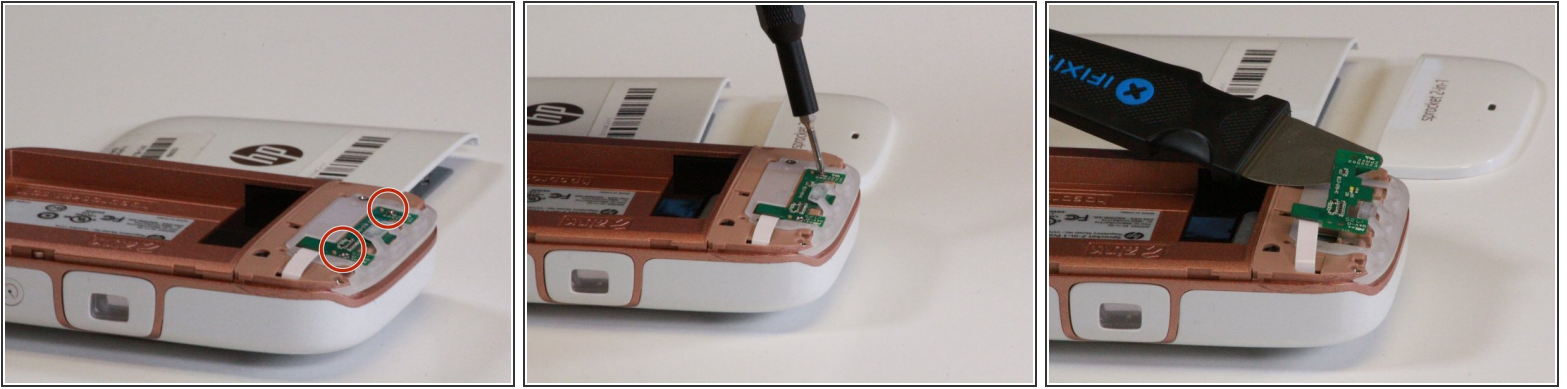
- Remove the back cover and any printer paper inside the device.

Step 2



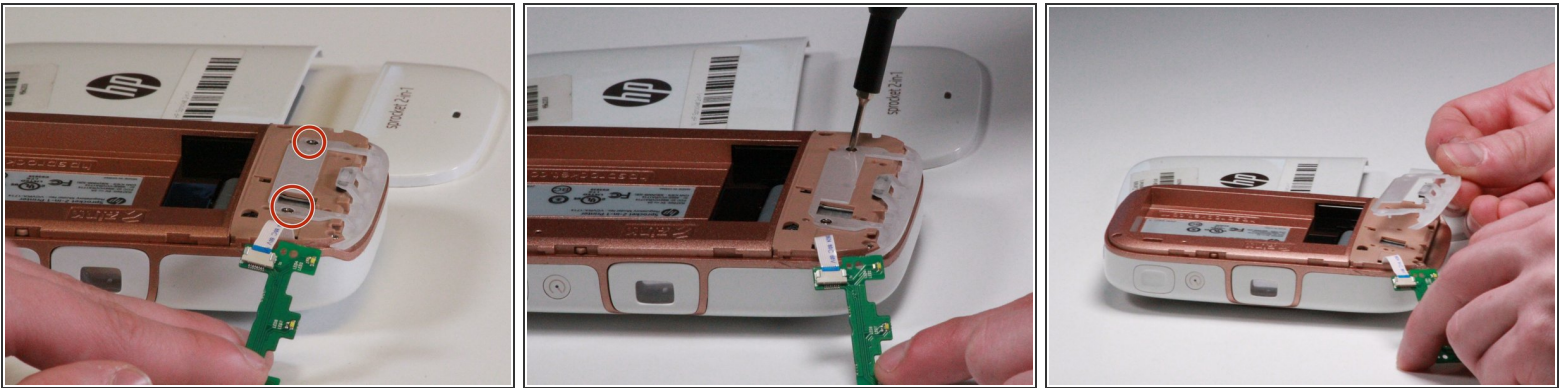
- Using the Jimmy, slowly pry open the outer edge of the remaining white plastic on the back.
- Remove the plastic from the device once it lifts out freely.

Step 3



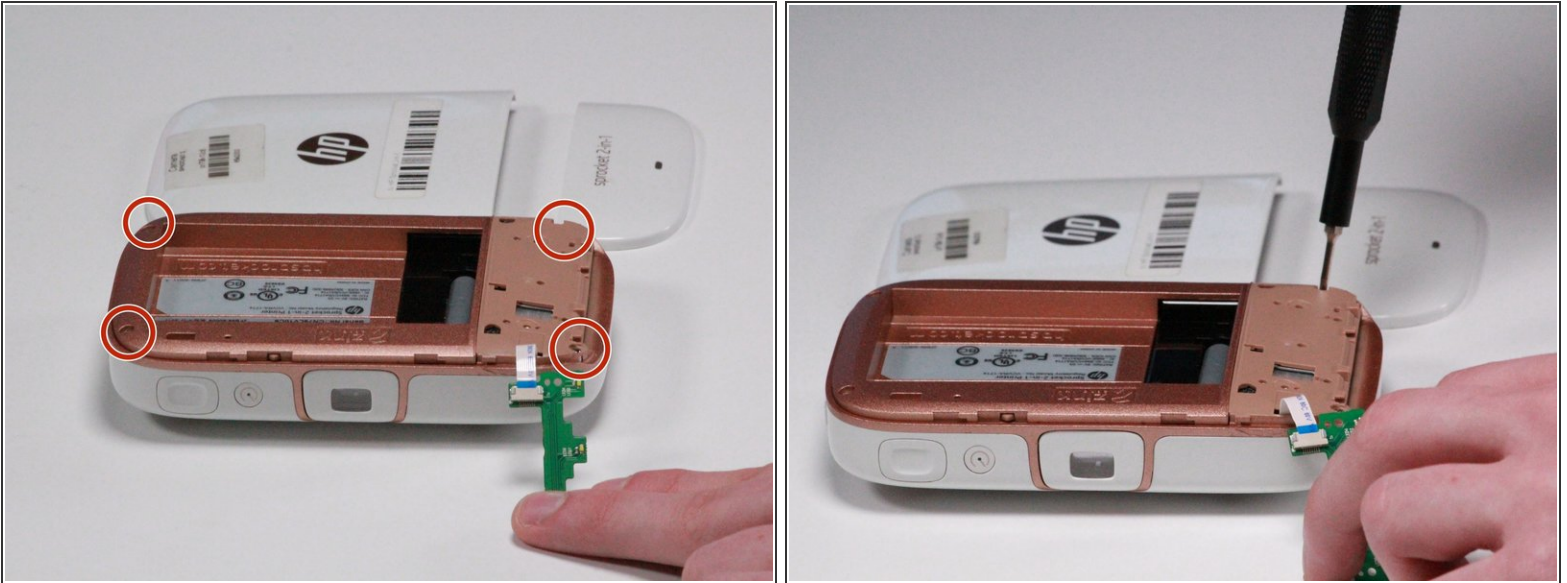
- Remove two 2.5mm JIS #00 located on the small circuit board in view.
 - Use the Jimmy to remove the board after the screws have been removed.
- ⚠ Be careful not to crease or damage the ribbon cable.

Step 4



- Remove two 2.5mm JIS #00 screws from the translucent plastic bracket.
- i** One will be located beneath the ribbon cable.
- Remove the translucent plastic bracket by hand.

Step 5



- Remove four 2.5mm JIS #00 screws from the beige casing.

Step 6

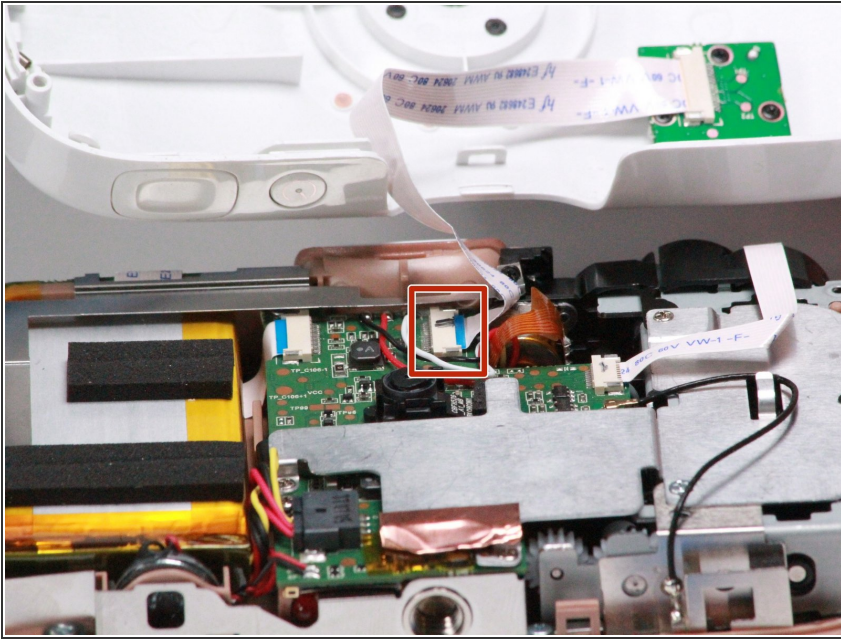


- Use the iFixit opening tool to slowly work between the white and beige casing around the device.
- Flip the device over and separate the white casing from the rest of the device.

⚠ Be careful not to break the plastic while removing the case.

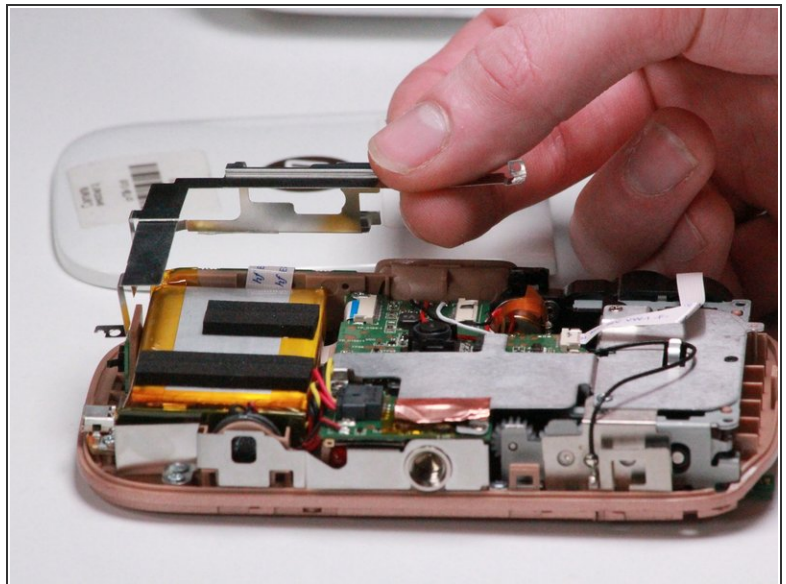
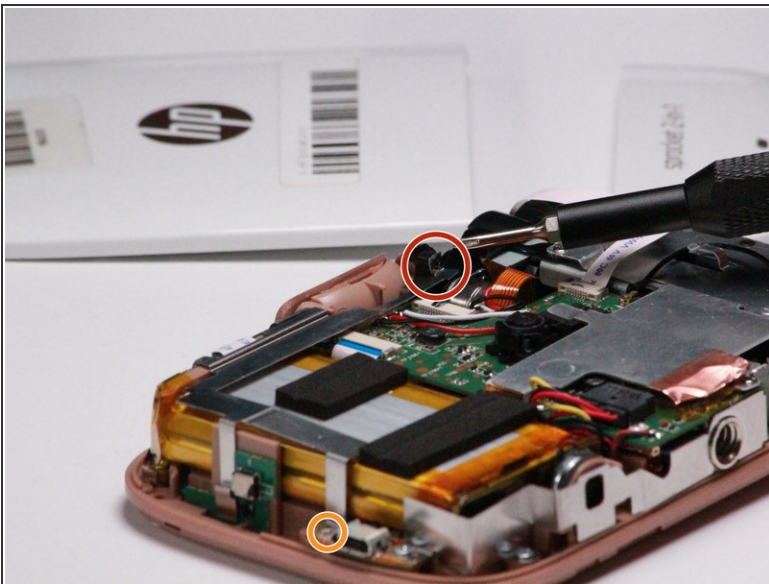
⚠ Gently remove the white casing as there is a ribbon cable connecting the two pieces.

Step 7



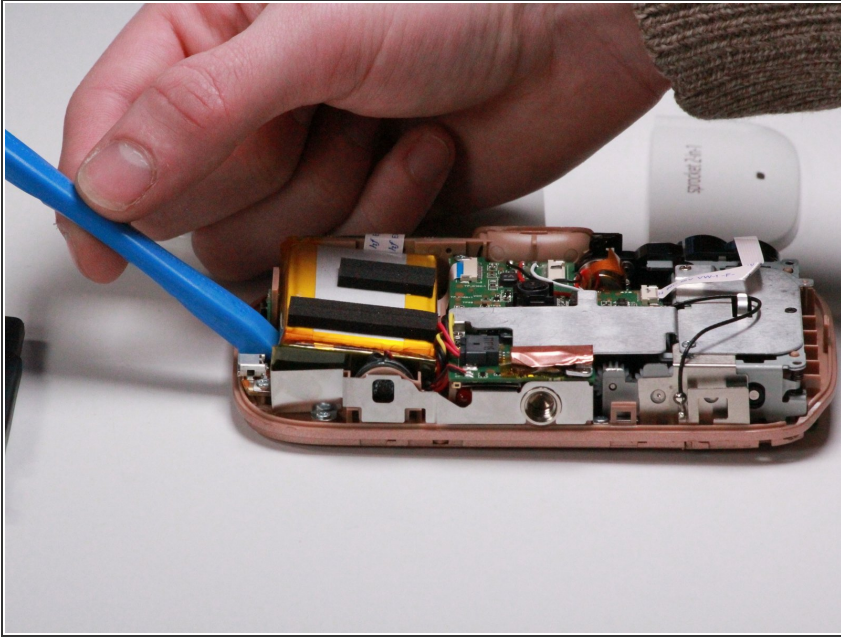
- Carefully remove the ribbon cable that connects the flash to the outer casing.

Step 8 — Battery



- Use a JIS #00 screwdriver to remove a single black screw near the viewfinder.
- Remove a single silver 2.5mm JIS #00 screw near the USB port of the device.
- Carefully remove the metal bracket.

Step 9



- Work the battery free from the device with the iFixit opening tool.

⚠ Carefully disconnect the battery from the board.

To reassemble your device, follow these instructions in reverse order.